



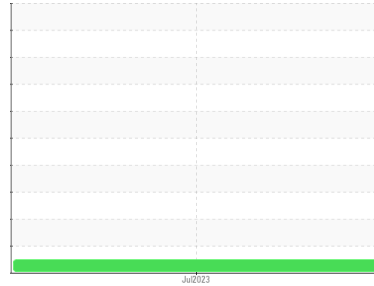
# OIL ANALYSIS REPORT

Sample Rating Trend

**NORMAL**



Area  
**Evp Island**  
 Machine Id  
**GOULDS Second Effect Pump 0332**  
 Component  
**Pump**  
 Fluid  
**MOBIL SHC 626 (3 QTS)**



## DIAGNOSIS

### Recommendation

Resample at the next service interval to monitor. Analytical Ferrography: Results are normal with typical amounts of ferrous rubbing wear and contamination present.

### Wear

All component wear rates are normal. The direct-reading & analytical ferrographic results are normal indicating no abnormal wear in the system.

### Contaminants

The system cleanliness is acceptable for your target ISO 4406 cleanliness code. The system and fluid cleanliness is acceptable.

### Oil Condition

The AN level is acceptable for this fluid. The condition of the oil is suitable for further service.

## SAMPLE INFORMATION

	method	limit/base	current	history1	history2
Sample Number	Client Info		<b>WC0824329</b>	---	---
Sample Date	Client Info		<b>19 Jul 2023</b>	---	---
Machine Age	mths	Client Info	<b>0</b>	---	---
Oil Age	mths	Client Info	<b>3</b>	---	---
Oil Changed	Client Info		<b>Not Chngd</b>	---	---
Sample Status			<b>NORMAL</b>	---	---

## WEAR METALS

	method	limit/base	current	history1	history2
PQ	ASTM D8184		<b>12</b>	---	---
Iron	ppm	ASTM D5185m >90	<b>&lt;1</b>	---	---
Chromium	ppm	ASTM D5185m >5	<b>0</b>	---	---
Nickel	ppm	ASTM D5185m >5	<b>&lt;1</b>	---	---
Titanium	ppm	ASTM D5185m >3	<b>0</b>	---	---
Silver	ppm	ASTM D5185m >3	<b>0</b>	---	---
Aluminum	ppm	ASTM D5185m >7	<b>0</b>	---	---
Lead	ppm	ASTM D5185m >12	<b>0</b>	---	---
Copper	ppm	ASTM D5185m >30	<b>&lt;1</b>	---	---
Tin	ppm	ASTM D5185m >9	<b>0</b>	---	---
Vanadium	ppm	ASTM D5185m	<b>0</b>	---	---
Cadmium	ppm	ASTM D5185m	<b>0</b>	---	---

## ADDITIVES

	method	limit/base	current	history1	history2
Boron	ppm	ASTM D5185m	<b>0</b>	---	---
Barium	ppm	ASTM D5185m	<b>0</b>	---	---
Molybdenum	ppm	ASTM D5185m	<b>0</b>	---	---
Manganese	ppm	ASTM D5185m	<b>0</b>	---	---
Magnesium	ppm	ASTM D5185m	<b>0</b>	---	---
Calcium	ppm	ASTM D5185m	<b>0</b>	---	---
Phosphorus	ppm	ASTM D5185m	<b>403</b>	---	---
Zinc	ppm	ASTM D5185m	<b>0</b>	---	---
Sulfur	ppm	ASTM D5185m	<b>0</b>	---	---

## CONTAMINANTS

	method	limit/base	current	history1	history2
Silicon	ppm	ASTM D5185m >60	<b>5</b>	---	---
Sodium	ppm	ASTM D5185m	<b>0</b>	---	---
Potassium	ppm	ASTM D5185m >20	<b>0</b>	---	---

## FLUID CLEANLINESS

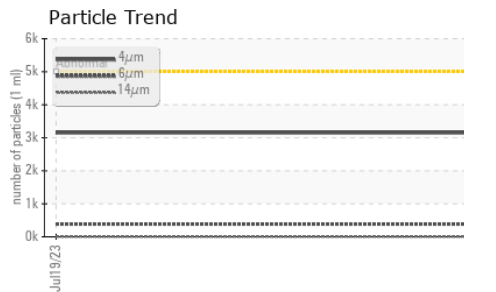
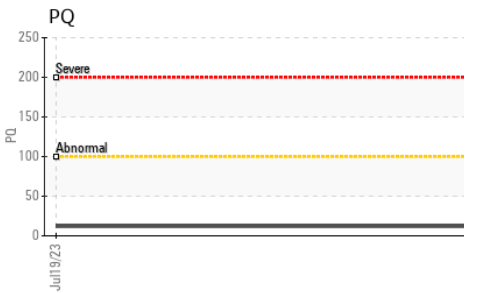
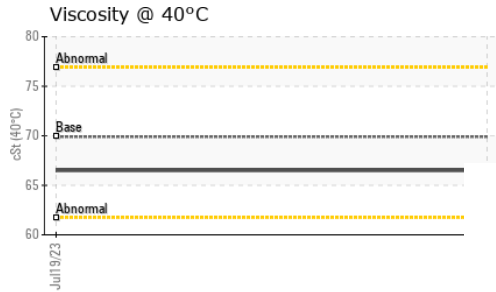
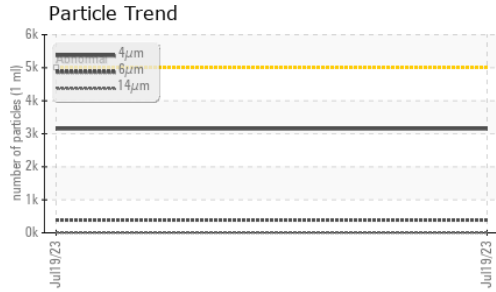
	method	limit/base	current	history1	history2
Particles >4µm	ASTM D7647	>5000	<b>3152</b>	---	---
Particles >6µm	ASTM D7647	>1300	<b>387</b>	---	---
Particles >14µm	ASTM D7647	>160	<b>8</b>	---	---
Particles >21µm	ASTM D7647	>40	<b>4</b>	---	---
Particles >38µm	ASTM D7647	>10	<b>1</b>	---	---
Particles >71µm	ASTM D7647	>3	<b>0</b>	---	---
Oil Cleanliness	ISO 4406 (c)	>19/17/14	<b>19/16/10</b>	---	---

## FLUID DEGRADATION

	method	limit/base	current	history1	history2
Acid Number (AN)	mg KOH/g	ASTM D8045	<b>0.49</b>	---	---



# OIL ANALYSIS REPORT



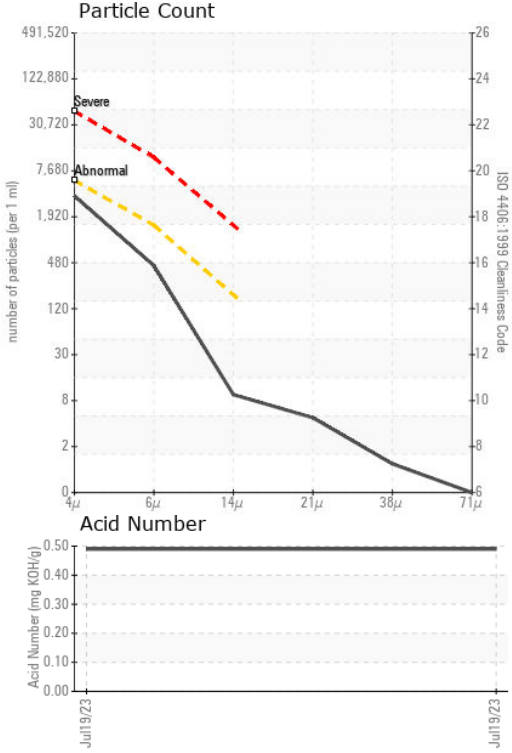
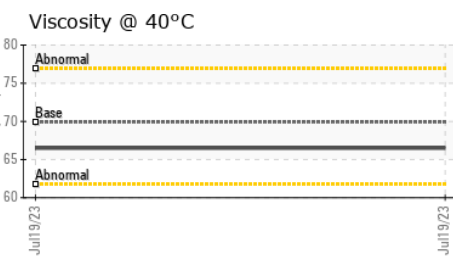
VISUAL	method	limit/base	current	history1	history2
White Metal	scalar	*Visual	NONE	NONE	---
Yellow Metal	scalar	*Visual	NONE	NONE	---
Precipitate	scalar	*Visual	NONE	NONE	---
Silt	scalar	*Visual	NONE	NONE	---
Debris	scalar	*Visual	NONE	NONE	---
Sand/Dirt	scalar	*Visual	NONE	NONE	---
Appearance	scalar	*Visual	NORML	NORML	---
Odor	scalar	*Visual	NORML	NORML	---
Emulsified Water	scalar	*Visual	NEG	---	---
Free Water	scalar	*Visual	NEG	---	---

FLUID PROPERTIES	method	limit/base	current	history1	history2
Visc @ 40°C	cSt	ASTM D445	69.9	66.5	---

SAMPLE IMAGES	method	limit/base	current	history1	history2
---------------	--------	------------	---------	----------	----------

Color		no image	no image
Bottom		no image	no image

## GRAPHS



Certificate L2367

**Laboratory** : WearCheck USA - 501 Madison Ave., Cary, NC 27513  
**Sample No.** : WC0824329 **Received** : 21 Jul 2023  
**Lab Number** : 05904967 **Diagnosed** : 03 Aug 2023  
**Unique Number** : 10566323 **Diagnostician** : Aaron Black  
**Test Package** : PLANT ( Additional Tests: A-FERR )

To discuss this sample report, contact Customer Service at 1-800-237-1369.

\* - Denotes test methods that are outside of the ISO 17025 scope of accreditation.

Statements of conformity to specifications are based on the simple acceptance decision rule (JCGM 106:2012)

**GRAPHIC PACKAGING INTERNATIONAL**  
 100 GRAPHIC PACKAGING INTERNATIONAL  
 MACON, GA  
 US 31206

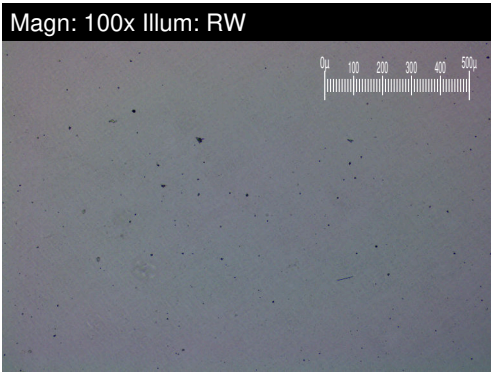
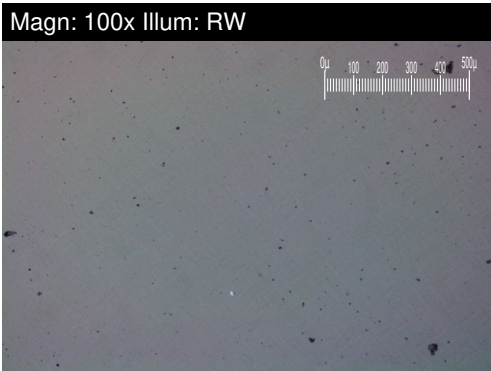
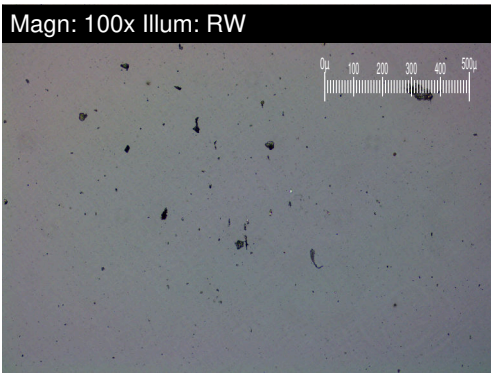
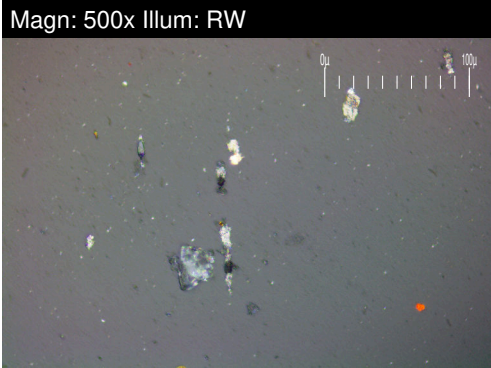
Contact: DARYL SPRINGER  
 daryl.springer@graphicpkg.com  
 T: (478)784-3677

F:



# FERROGRAPHY REPORT

Area  
**Evp Island**  
 Machine Id  
**GOULDS Second Effect Pump 0332**  
 Component  
**Pump**  
 Fluid  
**MOBIL SHC 626 (3 QTS)**



FERROGRAPHY	method	limit/base	current	history1	history2
Ferrous Rubbing	Scale 0-10	*ASTM D7684	2		
Ferrous Sliding	Scale 0-10	*ASTM D7684			
Ferrous Cutting	Scale 0-10	*ASTM D7684			
Ferrous Rolling	Scale 0-10	*ASTM D7684			
Ferrous Break-in	Scale 0-10	*ASTM D7684			
Ferrous Spheres	Scale 0-10	*ASTM D7684			
Ferrous Black Oxides	Scale 0-10	*ASTM D7684			
Ferrous Red Oxides	Scale 0-10	*ASTM D7684			
Ferrous Corrosive	Scale 0-10	*ASTM D7684			
Ferrous Other	Scale 0-10	*ASTM D7684			
Nonferrous Rubbing	Scale 0-10	*ASTM D7684			
Nonferrous Sliding	Scale 0-10	*ASTM D7684			
Nonferrous Cutting	Scale 0-10	*ASTM D7684			
Nonferrous Rolling	Scale 0-10	*ASTM D7684			
Nonferrous Other	Scale 0-10	*ASTM D7684			
Carbonaceous Material	Scale 0-10	*ASTM D7684			
Lubricant Degradation	Scale 0-10	*ASTM D7684			
Sand/Dirt	Scale 0-10	ASTM D7684			
Fibres	Scale 0-10	*ASTM D7684			
Spheres	Scale 0-10	*ASTM D7684			
Other	Scale 0-10	*ASTM D7684	2		

## WEAR

All component wear rates are normal.  
 The direct-reading & analytical  
 ferrographic results are normal  
 indicating no abnormal wear in the  
 system.

*This page left intentionally blank*