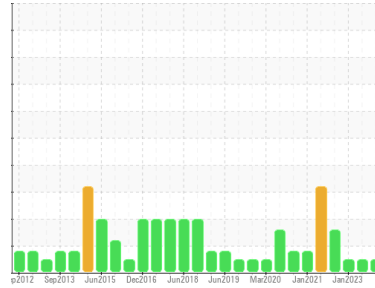




# OIL ANALYSIS REPORT

Sample Rating Trend



**NORMAL**



Area  
**AREA I [500302042]**  
 Machine Id  
**CHEMINEER A1401 (S/N 22331)**  
 Component  
**Gearbox**  
 Fluid  
**ROYAL PURPLE SYNFILM GT 220 (4 GAL)**

## DIAGNOSIS

### Recommendation

Resample at the next service interval to monitor.

### Wear

All component wear rates are normal.

### Contamination

There is no indication of any contamination in the oil.

### Fluid Condition

The AN level is acceptable for this fluid. The condition of the oil is suitable for further service.

## SAMPLE INFORMATION

	method	limit/base	current	history1	history2
Sample Number	Client Info		<b>WC0810162</b>	WC0804396	WC0593247
Sample Date	Client Info		<b>05 Jul 2023</b>	14 Apr 2023	12 Jan 2023
Machine Age	hrs	Client Info	<b>0</b>	0	0
Oil Age	hrs	Client Info	<b>0</b>	0	0
Oil Changed	Client Info		<b>N/A</b>	N/A	N/A
Sample Status			<b>NORMAL</b>	NORMAL	NORMAL

## WEAR METALS

	method	limit/base	current	history1	history2
Iron	ppm	ASTM D5185m >200	<b>151</b>	128	3
Chromium	ppm	ASTM D5185m >15	<b>&lt;1</b>	0	0
Nickel	ppm	ASTM D5185m >15	<b>0</b>	0	0
Titanium	ppm	ASTM D5185m	<b>1</b>	1	0
Silver	ppm	ASTM D5185m	<b>&lt;1</b>	0	0
Aluminum	ppm	ASTM D5185m >25	<b>13</b>	12	3
Lead	ppm	ASTM D5185m >100	<b>&lt;1</b>	0	0
Copper	ppm	ASTM D5185m >200	<b>&lt;1</b>	<1	<1
Tin	ppm	ASTM D5185m >25	<b>0</b>	0	0
Vanadium	ppm	ASTM D5185m	<b>0</b>	0	0
Cadmium	ppm	ASTM D5185m	<b>1</b>	1	0

## ADDITIVES

	method	limit/base	current	history1	history2
Boron	ppm	ASTM D5185m	<b>0</b>	0	0
Barium	ppm	ASTM D5185m	<b>1</b>	0	0
Molybdenum	ppm	ASTM D5185m	<b>&lt;1</b>	<1	<1
Manganese	ppm	ASTM D5185m	<b>2</b>	2	0
Magnesium	ppm	ASTM D5185m	<b>65</b>	72	74
Calcium	ppm	ASTM D5185m	<b>6</b>	8	2
Phosphorus	ppm	ASTM D5185m	<b>6</b>	4	12
Zinc	ppm	ASTM D5185m	<b>112</b>	114	2
Sulfur	ppm	ASTM D5185m	<b>21630</b>	24486	20165

## CONTAMINANTS

	method	limit/base	current	history1	history2
Silicon	ppm	ASTM D5185m >50	<b>7</b>	7	3
Sodium	ppm	ASTM D5185m	<b>0</b>	<1	0
Potassium	ppm	ASTM D5185m >20	<b>2</b>	<1	<1

## FLUID DEGRADATION

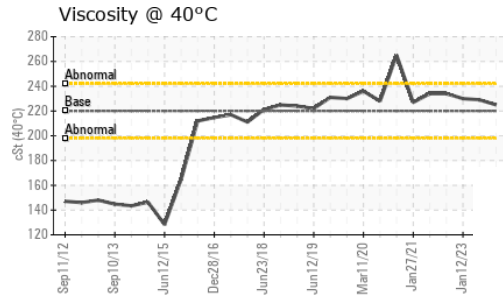
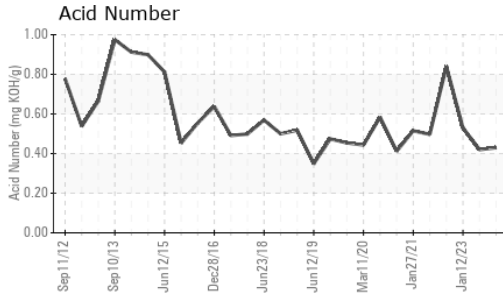
	method	limit/base	current	history1	history2
Acid Number (AN)	mg KOH/g	ASTM D8045	<b>0.43</b>	0.42	0.53

## VISUAL

	method	limit/base	current	history1	history2
White Metal	scalar	*Visual NONE	<b>NONE</b>	MODER	NONE
Yellow Metal	scalar	*Visual NONE	<b>NONE</b>	NONE	NONE
Precipitate	scalar	*Visual NONE	<b>NONE</b>	NONE	NONE
Silt	scalar	*Visual NONE	<b>MODER</b>	MODER	NONE
Debris	scalar	*Visual NONE	<b>NONE</b>	NONE	NONE
Sand/Dirt	scalar	*Visual NONE	<b>NONE</b>	NONE	NONE
Appearance	scalar	*Visual NORML	<b>NORML</b>	NORML	NORML
Odor	scalar	*Visual NORML	<b>NORML</b>	NORML	NORML
Emulsified Water	scalar	*Visual >0.2	<b>NEG</b>	0.2%	NEG
Free Water	scalar	*Visual	<b>NEG</b>	NEG	NEG



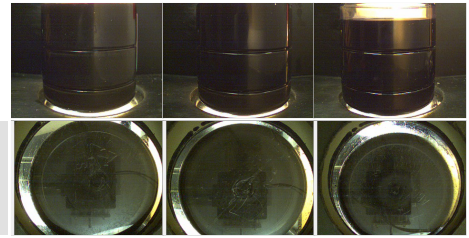
# OIL ANALYSIS REPORT



FLUID PROPERTIES	method	limit/base	current	history1	history2	
Visc @ 40°C	cSt	ASTM D445	220	<b>225</b>	229	230

SAMPLE IMAGES	method	limit/base	current	history1	history2
---------------	--------	------------	---------	----------	----------

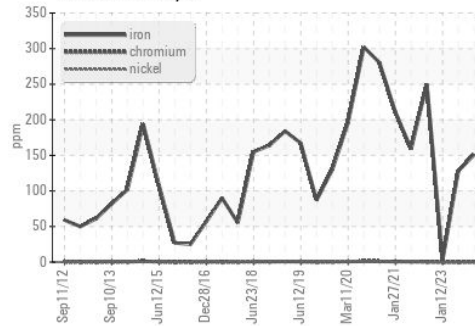
Color



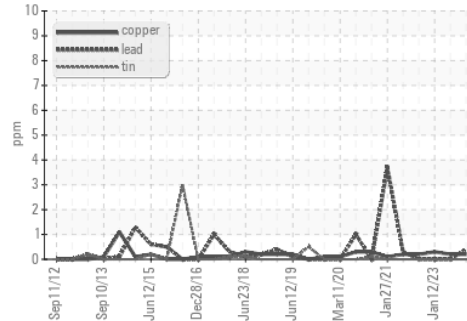
Bottom

## GRAPHS

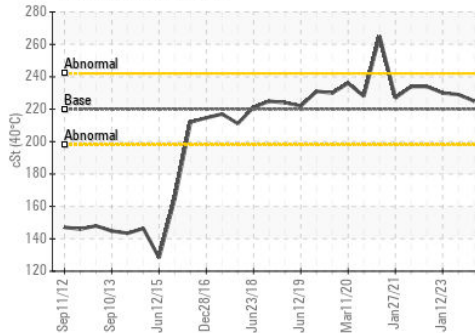
### Ferrous Alloys



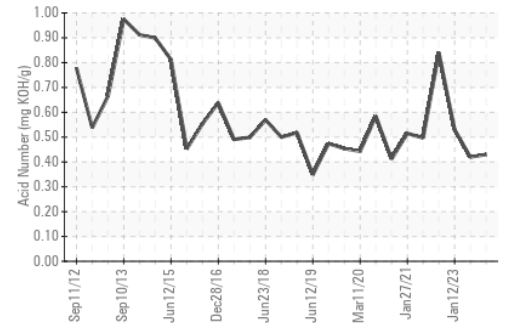
### Non-ferrous Metals



### Viscosity @ 40°C



### Acid Number



Certificate L2367

**Laboratory** : WearCheck USA - 501 Madison Ave., Cary, NC 27513  
**Sample No.** : WC0810162  
**Lab Number** : 05904983  
**Unique Number** : 10566339  
**Test Package** : IND 2

**SI GROUP INC - ALBEMARLE**  
 725 CANNON BRIDGE RD  
 ORANGEBURG, SC  
 US 29115

Contact: ERIC PROVEAUX  
 eric.proveaux@contractors.sigroup.com  
 T: (803)539-5228  
 F: (803)539-5426

To discuss this sample report, contact Customer Service at 1-800-237-1369.

\* - Denotes test methods that are outside of the ISO 17025 scope of accreditation.

Statements of conformity to specifications are based on the simple acceptance decision rule (JCGM 106:2012)