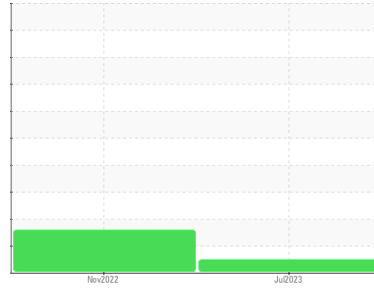




FUEL REPORT

Sample Rating Trend

NORMAL



Area
[CONHER]
 Machine Id
Astillero Tambo Diesel
 Component
Diesel Fuel
 Fluid
NOT GIVEN (--- GAL)

DIAGNOSIS

Recommendation

No corrective action is recommended at this time. (Customer Sample Comment: Muestra tomada de manguera)

Corrosion

All metal levels are normal indicating no corrosion in the system.

Contaminants

There is a moderate amount of silt (particulates < 14 microns in size) present in the fuel. Appearance is unacceptable

Fuel Condition

The condition of the fuel is acceptable for the time in service.

SAMPLE INFORMATION		method	limit/base	current	history1	history2
Sample Number	Client Info			KL0012403	KL0011306	---
Sample Date	Client Info			14 Jul 2023	27 Nov 2022	---
Machine Age	hrs	Client Info		0	0	---
Sample Status				NORMAL	ABNORMAL	---

PHYSICAL PROPERTIES		method	limit/base	current	history1	history2
Visc @ 40°C	cSt	ASTM D445		2.66	2.42	---

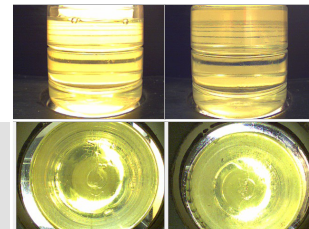
SULFUR CONTENT		method	limit/base	current	history1	history2
Sulfur	ppm	ASTM D5185m		0	0	---

CONTAMINANTS		method	limit/base	current	history1	history2
Silicon	ppm	ASTM D5185m	<1.0	0	<1	---
Sodium	ppm	ASTM D5185m	<0.1	<1	0	---
Potassium	ppm	ASTM D5185m	<0.1	0	0	---
Water	%	ASTM D6304	<0.05	0.002	0.003	---
ppm Water	ppm	ASTM D6304	<500	24.4	32.9	---

FLUID CLEANLINESS		method	limit/base	current	history1	history2
Particles >4µm		ASTM D7647		2115	7792	---
Particles >6µm		ASTM D7647	>640	686	▲ 2659	---
Particles >14µm		ASTM D7647	>80	64	▲ 261	---
Particles >21µm		ASTM D7647	>20	14	▲ 54	---
Particles >38µm		ASTM D7647	>4	0	2	---
Particles >71µm		ASTM D7647	>3	0	0	---
Oil Cleanliness		ISO 4406 (c)	>16/13	17/13	▲ 19/15	---

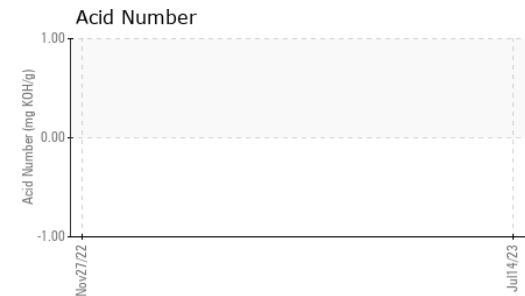
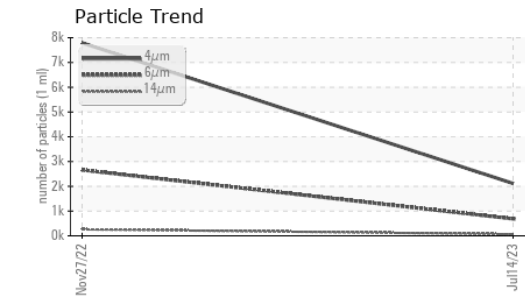
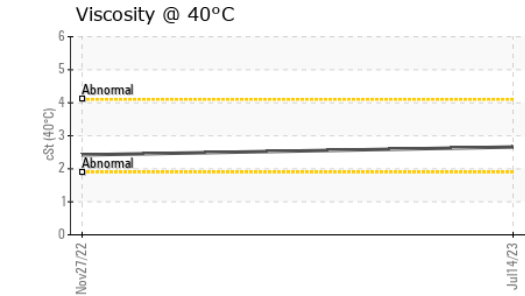
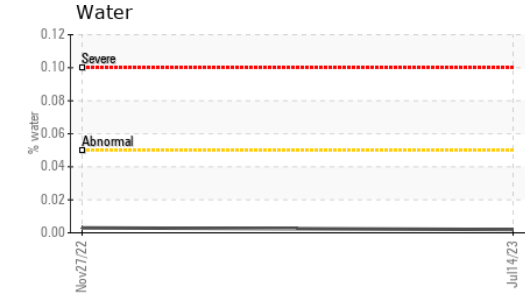
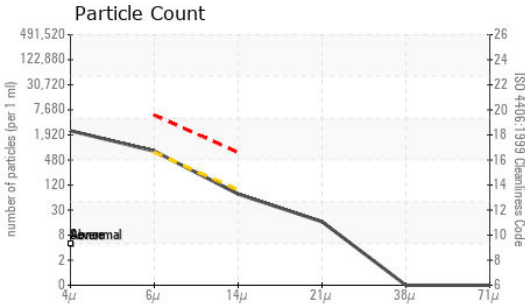
HEAVY METALS		method	limit/base	current	history1	history2
Aluminum	ppm	ASTM D5185m	<0.1	<1	1	---
Nickel	ppm	ASTM D5185m	<0.1	0	0	---
Lead	ppm	ASTM D5185m	<0.1	0	0	---
Vanadium	ppm	ASTM D5185m	<0.1	<1	0	---
Iron	ppm	ASTM D5185m	<0.1	0	0	---
Calcium	ppm	ASTM D5185m	<0.1	0	0	---
Magnesium	ppm	ASTM D5185m	<0.1	0	0	---
Phosphorus	ppm	ASTM D5185m	<0.1	0	3	---
Zinc	ppm	ASTM D5185m	<0.1	0	0	---

SAMPLE IMAGES		method	limit/base	current	history1	history2
Color						no image
Bottom						no image

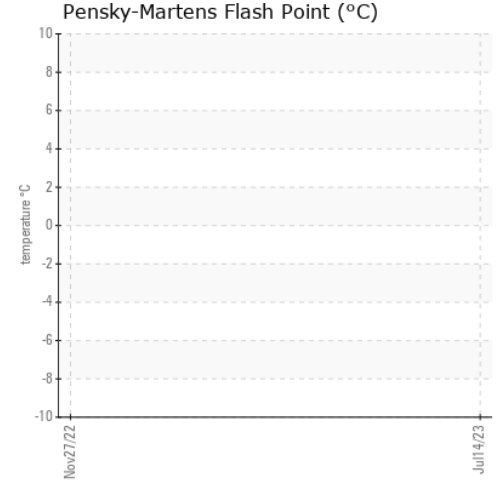




FUEL REPORT



GRAPHS



Certificate L2367

Laboratory : WearCheck USA - 501 Madison Ave., Cary, NC 27513
Sample No. : KL0012403 **Received** : 21 Jul 2023
Lab Number : 05905071 **Diagnosed** : 01 Aug 2023
Unique Number : 10566427 **Diagnostician** : Doug Bogart
Test Package : MOB 2 (Additional Tests: KF, PrtCount)

To discuss this sample report, contact Customer Service at 1-800-237-1369.

* - Denotes test methods that are outside of the ISO 17025 scope of accreditation.

Statements of conformity to specifications are based on the simple acceptance decision rule (JCGM 106:2012)

IBACO
 GUAYMAS,
 MX
 Contact: JOSE GARCIA
 jefeflota@ibaco.com.mx
 T:
 F: