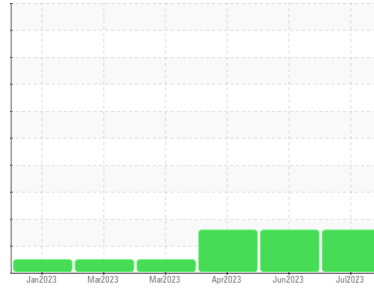




FUEL REPORT

Sample Rating Trend



ISO



Area
GUAY SON/Yavaros [CONHER]
 Machine Id
Barda 1 Diesel Fuel
 Component
Diesel Fuel
 Fluid
NOT GIVEN (--- GAL)

DIAGNOSIS

Recommendation

This is a baseline read-out on the submitted sample. We recommend you service the filters on this component if applicable.

Corrosion

All metal levels are normal indicating no corrosion in the system.

Contaminants

There is a high amount of particulates present in the fuel. The water content is negligible.

Fuel Condition

The condition of the fuel is acceptable for the time in service.

SAMPLE INFORMATION		method	limit/base	current	history1	history2
Sample Number	Client Info			KL0012399	KL0012373	KL0012346
Sample Date	Client Info			08 Jul 2023	03 Jun 2023	29 Apr 2023
Machine Age	hrs	Client Info		0	0	0
Sample Status				ABNORMAL	ABNORMAL	ABNORMAL

PHYSICAL PROPERTIES		method	limit/base	current	history1	history2
Visc @ 40°C	cSt	ASTM D445		2.63	2.74	2.69

SULFUR CONTENT		method	limit/base	current	history1	history2
Sulfur	ppm	ASTM D5185m		41	16	7

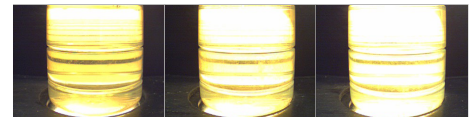
CONTAMINANTS		method	limit/base	current	history1	history2
Silicon	ppm	ASTM D5185m	<1.0	0	<1	0
Sodium	ppm	ASTM D5185m	<0.1	1	1	0
Potassium	ppm	ASTM D5185m	<0.1	0	<1	<1
Water	%	ASTM D6304	<0.05	0.002	0.003	0.003
ppm Water	ppm	ASTM D6304	<500	21.3	32.4	30.9

FLUID CLEANLINESS		method	limit/base	current	history1	history2
Particles >4µm		ASTM D7647		14652	6526	7498
Particles >6µm		ASTM D7647	>640	▲ 3773	▲ 1584	▲ 1886
Particles >14µm		ASTM D7647	>80	▲ 390	▲ 124	▲ 167
Particles >21µm		ASTM D7647	>20	▲ 93	▲ 31	▲ 45
Particles >38µm		ASTM D7647	>4	2	0	1
Particles >71µm		ASTM D7647	>3	0	0	0
Oil Cleanliness		ISO 4406 (c)	>16/13	▲ 19/16	▲ 18/14	▲ 18/15

HEAVY METALS		method	limit/base	current	history1	history2
Aluminum	ppm	ASTM D5185m	<0.1	<1	0	0
Nickel	ppm	ASTM D5185m	<0.1	0	0	0
Lead	ppm	ASTM D5185m	<0.1	0	0	0
Vanadium	ppm	ASTM D5185m	<0.1	<1	0	0
Iron	ppm	ASTM D5185m	<0.1	0	0	0
Calcium	ppm	ASTM D5185m	<0.1	0	0	0
Magnesium	ppm	ASTM D5185m	<0.1	1	1	0
Phosphorus	ppm	ASTM D5185m	<0.1	0	0	0
Zinc	ppm	ASTM D5185m	<0.1	0	0	0

SAMPLE IMAGES		method	limit/base	current	history1	history2
---------------	--	--------	------------	---------	----------	----------

Color

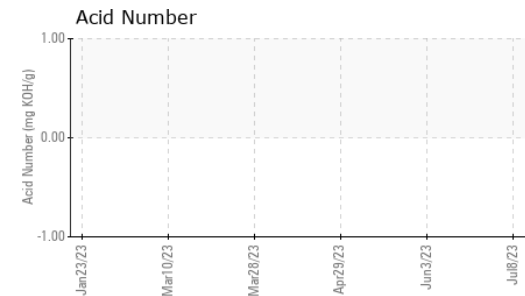
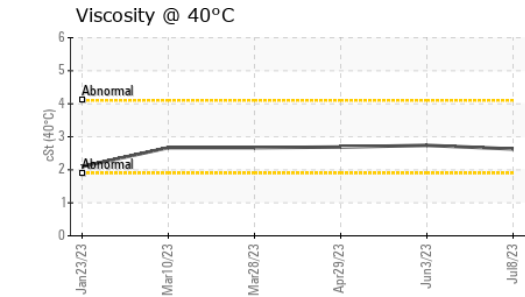
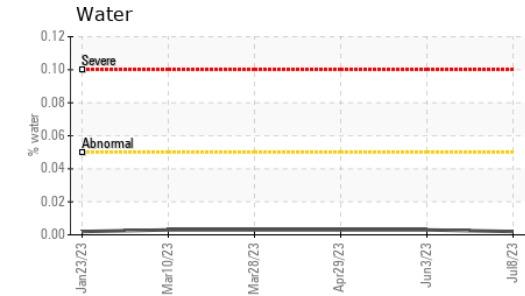
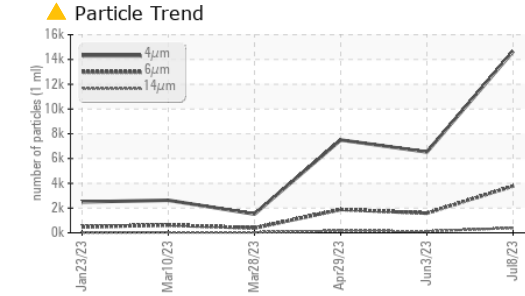
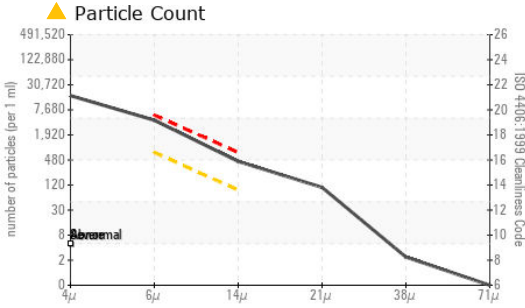


Bottom

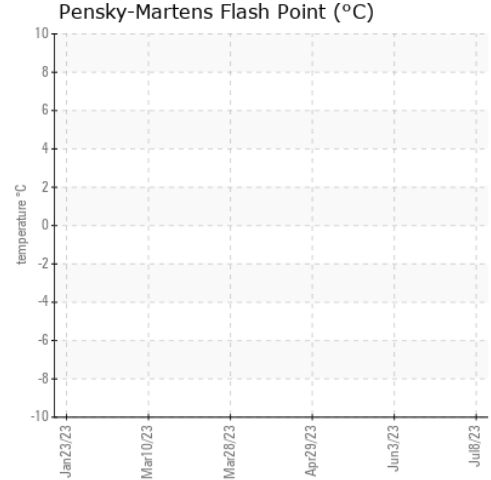




FUEL REPORT



GRAPHS



Certificate L2367

Laboratory : WearCheck USA - 501 Madison Ave., Cary, NC 27513
Sample No. : KL0012399 **Received** : 21 Jul 2023
Lab Number : 05905072 **Diagnosed** : 01 Aug 2023
Unique Number : 10566428 **Diagnostician** : Doug Bogart
Test Package : MOB 2 (Additional Tests: KF, PrtCount)

To discuss this sample report, contact Customer Service at 1-800-237-1369.

* - Denotes test methods that are outside of the ISO 17025 scope of accreditation.

Statements of conformity to specifications are based on the simple acceptance decision rule (JCGM 106:2012)

CONOR
 JUAREZ 348
 HERMOSILLO,
 MX 83140
 Contact: EDUARDO GARCIA
 egarcia.comsa@gmail.com
 T: (526)622-1581 x:81
 F: x: