



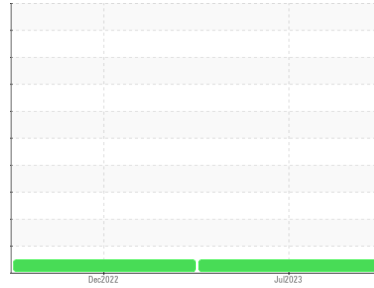
# OIL ANALYSIS REPORT

Sample Rating Trend

**NORMAL**



Area  
**ROTO XTEND DUTY**  
 Machine Id  
**ATLAS COPCO AIF116207 - UVA**  
 Component  
**Compressor**



## DIAGNOSIS

### Recommendation

Resample at the next service interval to monitor.

### Wear

All component wear rates are normal.

### Contamination

There is no indication of any contamination in the oil.

### Fluid Condition

The AN level is acceptable for this fluid. The condition of the oil is suitable for further service.

## SAMPLE INFORMATION

	method	limit/base	current	history1	history2
Sample Number	Client Info		<b>UCH05905625</b>	UCH05742677	---
Sample Date	Client Info		<b>10 Jul 2023</b>	20 Dec 2022	---
Machine Age	hrs	Client Info	<b>86276</b>	83398	---
Oil Age	hrs	Client Info	<b>0</b>	0	---
Oil Changed	Client Info		<b>Not Changed</b>	Changed	---
Sample Status			<b>NORMAL</b>	NORMAL	---

## WEAR METALS

	method	limit/base	current	history1	history2
Iron	ppm	ASTM D5185m >50	<b>0</b>	<1	---
Chromium	ppm	ASTM D5185m >5	<b>0</b>	0	---
Nickel	ppm	ASTM D5185m	<b>0</b>	0	---
Titanium	ppm	ASTM D5185m	<b>0</b>	0	---
Silver	ppm	ASTM D5185m	<b>0</b>	0	---
Aluminum	ppm	ASTM D5185m >15	<b>0</b>	0	---
Lead	ppm	ASTM D5185m >65	<b>0</b>	0	---
Copper	ppm	ASTM D5185m >65	<b>&lt;1</b>	2	---
Tin	ppm	ASTM D5185m >10	<b>0</b>	0	---
Vanadium	ppm	ASTM D5185m	<b>0</b>	0	---
Cadmium	ppm	ASTM D5185m	<b>0</b>	0	---

## ADDITIVES

	method	limit/base	current	history1	history2
Boron	ppm	ASTM D5185m	<b>0</b>	0	---
Barium	ppm	ASTM D5185m	<b>13</b>	0	---
Molybdenum	ppm	ASTM D5185m	<b>0</b>	0	---
Manganese	ppm	ASTM D5185m	<b>&lt;1</b>	0	---
Magnesium	ppm	ASTM D5185m	<b>0</b>	<1	---
Calcium	ppm	ASTM D5185m	<b>&lt;1</b>	0	---
Phosphorus	ppm	ASTM D5185m	<b>19</b>	11	---
Zinc	ppm	ASTM D5185m	<b>12</b>	14	---
Sulfur	ppm	ASTM D5185m	<b>64</b>	24	---

## CONTAMINANTS

	method	limit/base	current	history1	history2
Silicon	ppm	ASTM D5185m >35	<b>&lt;1</b>	1	---
Sodium	ppm	ASTM D5185m	<b>&lt;1</b>	0	---
Potassium	ppm	ASTM D5185m >20	<b>&lt;1</b>	<1	---

## FLUID DEGRADATION

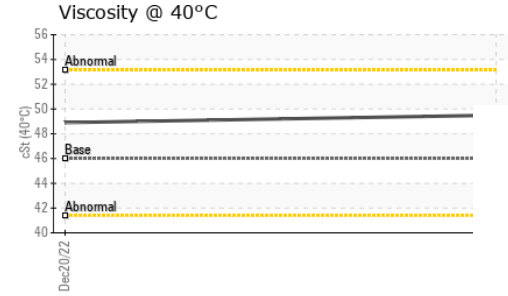
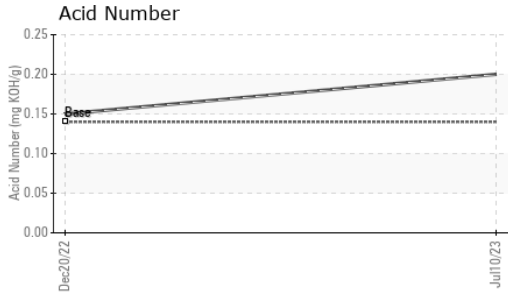
	method	limit/base	current	history1	history2
Acid Number (AN)	mg KOH/g	ASTM D8045 0.14	<b>0.20</b>	0.15	---

## VISUAL

	method	limit/base	current	history1	history2
White Metal	scalar	*Visual NONE	<b>NONE</b>	NONE	---
Yellow Metal	scalar	*Visual NONE	<b>NONE</b>	NONE	---
Precipitate	scalar	*Visual NONE	<b>NONE</b>	NONE	---
Silt	scalar	*Visual NONE	<b>NONE</b>	NONE	---
Debris	scalar	*Visual NONE	<b>NONE</b>	NONE	---
Sand/Dirt	scalar	*Visual NONE	<b>NONE</b>	NONE	---
Appearance	scalar	*Visual NORML	<b>NORML</b>	NORML	---
Odor	scalar	*Visual NORML	<b>NORML</b>	NORML	---
Emulsified Water	scalar	*Visual >0.1	<b>NEG</b>	NEG	---
Free Water	scalar	*Visual	<b>NEG</b>	NEG	---

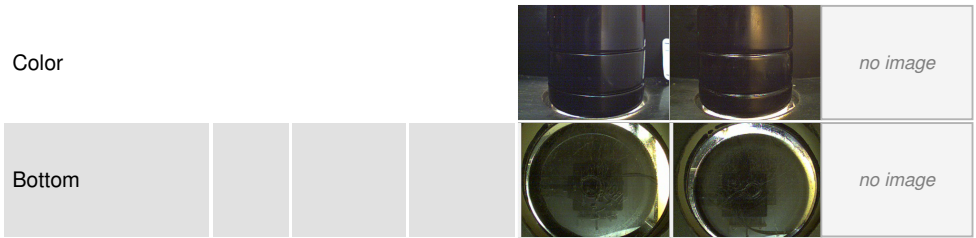


# OIL ANALYSIS REPORT

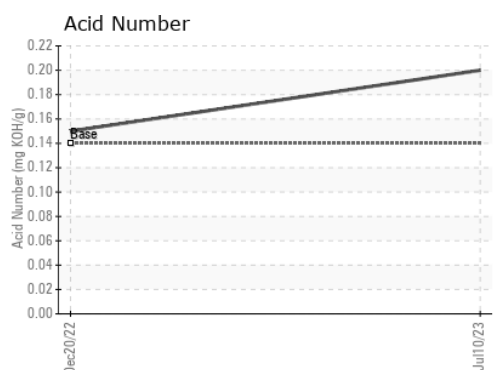
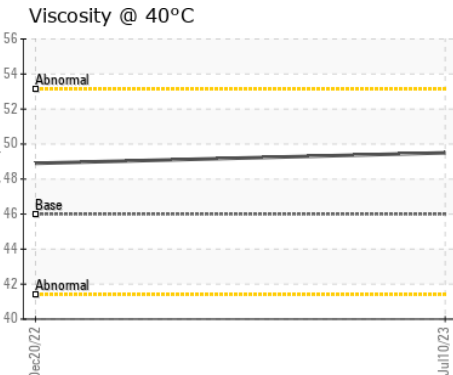
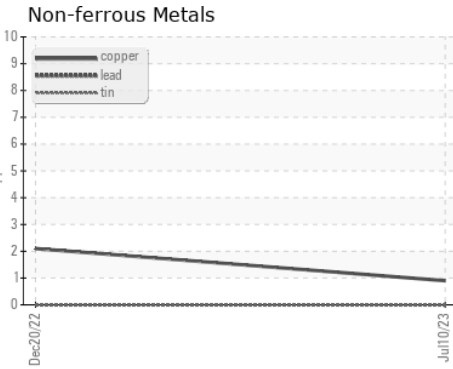
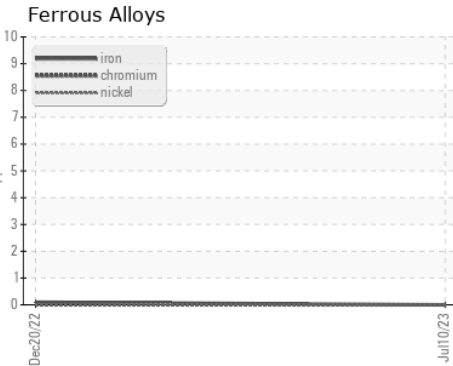


FLUID PROPERTIES	method	limit/base	current	history1	history2
Visc @ 40°C	cSt	ASTM D445 46	<b>49.5</b>	48.9	---

SAMPLE IMAGES	method	limit/base	current	history1	history2
---------------	--------	------------	---------	----------	----------



## GRAPHS



Certificate L2367

**Laboratory** : WearCheck USA - 501 Madison Ave., Cary, NC 27513  
**Sample No.** : UCH05905625    **Received** : 24 Jul 2023  
**Lab Number** : 05905625    **Diagnosed** : 26 Jul 2023  
**Unique Number** : 10566981    **Diagnostician** : Don Baldrige  
**Test Package** : IND 2

**TATE ENGINEERING**  
 8131 VIRGINIA PINE CT  
 RICHMOND, VA  
 US 23237  
 Contact: JOE MYRICK  
 JOE.MYRICK@TATE.COM  
 T: (804)339-0007  
 F: (804)743-0415

To discuss this sample report, contact Customer Service at 1-800-237-1369.

\* - Denotes test methods that are outside of the ISO 17025 scope of accreditation.

Statements of conformity to specifications are based on the simple acceptance decision rule (JCGM 106:2012)