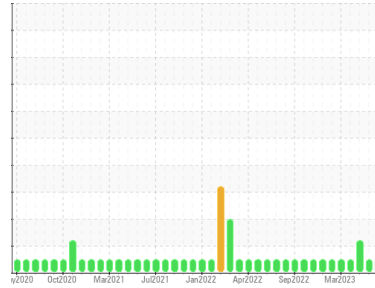




OIL ANALYSIS REPORT

Sample Rating Trend



NORMAL



Area
WP08 [1777994]
 Machine Id
WP08SW03 (S/N 1715 200)
 Component
Gearbox
 Fluid
MOBIL SHC 632 (2 GAL)

DIAGNOSIS

Recommendation

Resample at the next service interval to monitor. (Customer Sample Comment: Monthly oil change and sample)

Wear

All component wear rates are normal.

Contamination

There is no indication of any contamination in the oil.

Fluid Condition

The AN level is acceptable for this fluid. The condition of the oil is suitable for further service.

SAMPLE INFORMATION

method	limit/base	current	history1	history2
Sample Number	Client Info	WC0834250	WC0520029	WC0794310
Sample Date	Client Info	16 Jul 2023	24 May 2023	27 Apr 2023
Machine Age	hrs	0	1120	500
Oil Age	hrs	0	620	500
Oil Changed	Client Info	Changed	Changed	N/A
Sample Status		NORMAL	NORMAL	ATTENTION

WEAR METALS

method	limit/base	current	history1	history2	
Iron	ppm	ASTM D5185m >200	8	30	71
Chromium	ppm	ASTM D5185m >15	0	<1	0
Nickel	ppm	ASTM D5185m >15	0	<1	0
Titanium	ppm	ASTM D5185m	0	0	0
Silver	ppm	ASTM D5185m	0	0	0
Aluminum	ppm	ASTM D5185m >25	2	7	15
Lead	ppm	ASTM D5185m >100	0	0	0
Copper	ppm	ASTM D5185m >200	2	14	33
Tin	ppm	ASTM D5185m >25	<1	2	4
Vanadium	ppm	ASTM D5185m	0	0	0
Cadmium	ppm	ASTM D5185m	0	0	0

ADDITIVES

method	limit/base	current	history1	history2	
Boron	ppm	ASTM D5185m	0	0	0
Barium	ppm	ASTM D5185m	3	0	0
Molybdenum	ppm	ASTM D5185m	0	0	0
Manganese	ppm	ASTM D5185m	<1	<1	0
Magnesium	ppm	ASTM D5185m	1	<1	6
Calcium	ppm	ASTM D5185m	8	29	▲ 113
Phosphorus	ppm	ASTM D5185m	484	452	528
Zinc	ppm	ASTM D5185m	12	34	▲ 95
Sulfur	ppm	ASTM D5185m	39	11	▲ 0

CONTAMINANTS

method	limit/base	current	history1	history2	
Silicon	ppm	ASTM D5185m >50	7	13	19
Sodium	ppm	ASTM D5185m	0	<1	<1
Potassium	ppm	ASTM D5185m >20	0	<1	<1

FLUID DEGRADATION

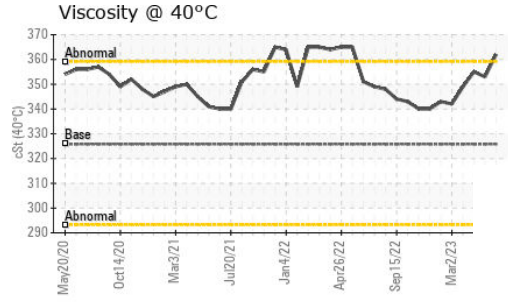
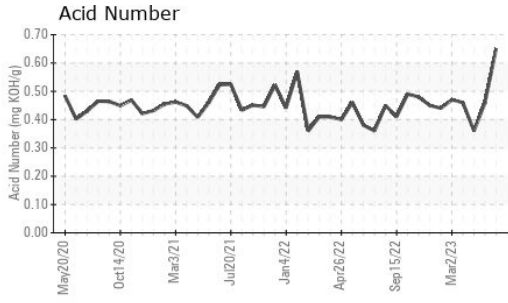
method	limit/base	current	history1	history2	
Acid Number (AN)	mg KOH/g	ASTM D8045	0.65	0.46	0.36

VISUAL

method	limit/base	current	history1	history2	
White Metal	scalar	*Visual NONE	NONE	LIGHT	LIGHT
Yellow Metal	scalar	*Visual NONE	NONE	NONE	NONE
Precipitate	scalar	*Visual NONE	NONE	NONE	NONE
Silt	scalar	*Visual NONE	NONE	NONE	NONE
Debris	scalar	*Visual NONE	NONE	LIGHT	LIGHT
Sand/Dirt	scalar	*Visual NONE	NONE	NONE	NONE
Appearance	scalar	*Visual NORML	NORML	NORML	NORML
Odor	scalar	*Visual NORML	NORML	NORML	NORML
Emulsified Water	scalar	*Visual >0.2	NEG	NEG	NEG
Free Water	scalar	*Visual	NEG	NEG	NEG

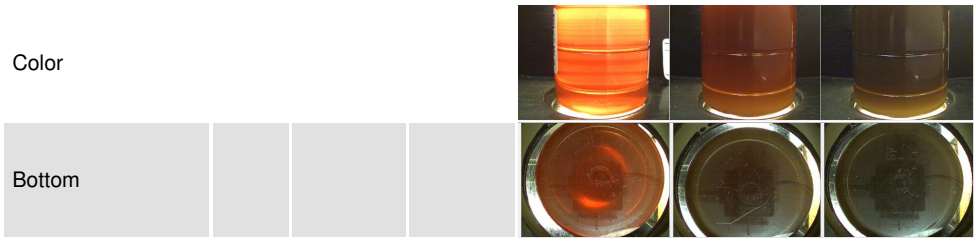


OIL ANALYSIS REPORT

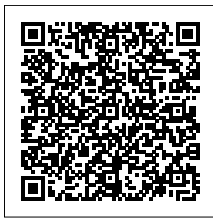
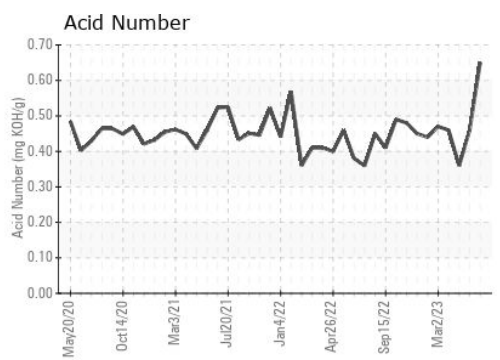
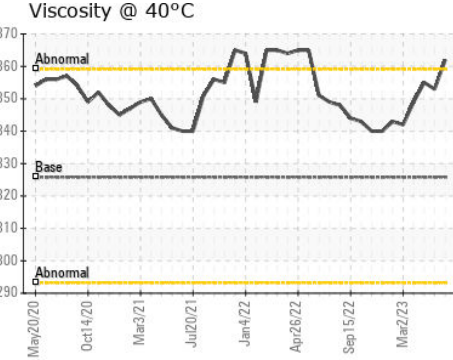
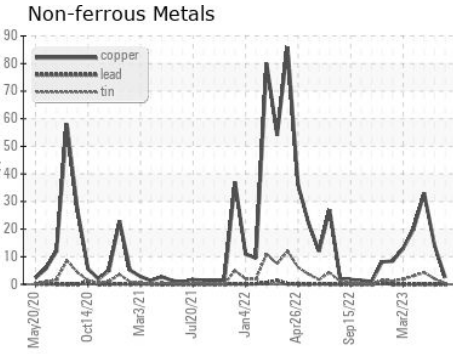
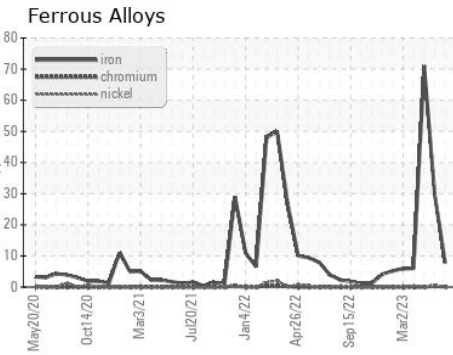


FLUID PROPERTIES		method	limit/base	current	history1	history2
Visc @ 40°C	cSt	ASTM D445	325.8	362	353	355

SAMPLE IMAGES		method	limit/base	current	history1	history2
---------------	--	--------	------------	---------	----------	----------



GRAPHS



Laboratory : WearCheck USA - 501 Madison Ave., Cary, NC 27513
Sample No. : WC0834250 **Received** : 24 Jul 2023
Lab Number : 05905629 **Diagnosed** : 25 Jul 2023
Unique Number : 10566985 **Diagnostician** : Don Baldrige
Test Package : IND 2

LEPRINO FOODS-FORT MORGAN
 2400 EAST BEAVER AVE
 FORT MORGAN, CO
 US 80701
 Contact: KEITH SCHULTE
 kschulte@leprinofoods.com
 T: (970)542-4247
 F: (970)542-4241

To discuss this sample report, contact Customer Service at 1-800-237-1369.
 * - Denotes test methods that are outside of the ISO 17025 scope of accreditation.
 Statements of conformity to specifications are based on the simple acceptance decision rule (JCGM 106:2012)