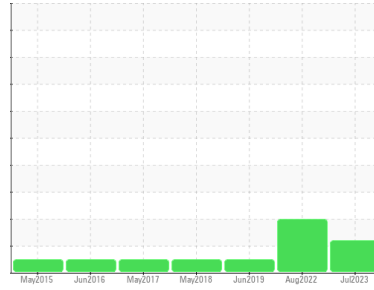




PROBLEM SUMMARY

Sample Rating Trend



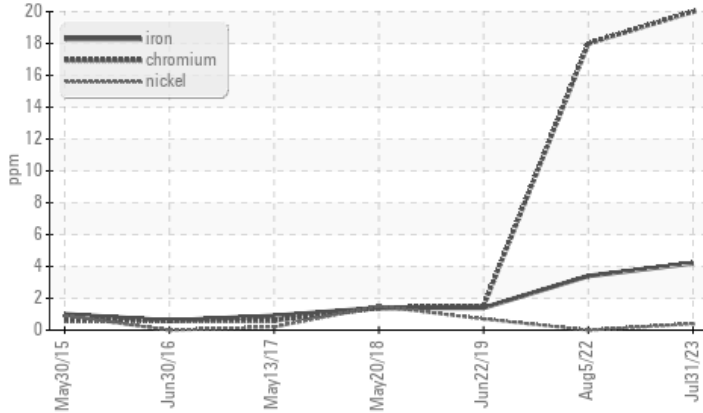
Machine Id
B1275

Component
Hydraulic System

Fluid
AW HYDRAULIC OIL ISO 46 (--- QTS)

COMPONENT CONDITION SUMMARY

▲ Ferrous Alloys



RECOMMENDATION

We recommend you service the filters on this component. Resample at the next service interval to monitor.

PROBLEMATIC TEST RESULTS

| Sample Status | | | | ABNORMAL | ABNORMAL | NORMAL |
|---------------|--------|-------------|------|-----------------|----------|--------|
| Chromium | ppm | ASTM D5185m | >20 | ▲ 20 | ▲ 18 | 2 |
| Debris | scalar | *Visual | NONE | ▲ MODER | LIGHT | NONE |

Customer Id: DTRTAZ
Sample No.: WC0799357
Lab Number: 05922611
Test Package: IND 1



To manage this report scan the QR code

To discuss the diagnosis or test data:
Don Baldrige +1
don.b505@comcast.net

To change component or sample information:
Customer Service +1 1-800-237-1369
customerservice@wearcheck.com

RECOMMENDED ACTIONS

| Action | Status | Date | Done By | Description |
|---------------|--------|------|---------|---|
| Change Filter | --- | --- | ? | We recommend you service the filters on this component. |

HISTORICAL DIAGNOSIS

05 Aug 2022 Diag: Jonathan Hester

VISUAL METAL



We recommend you service the filters on this component. Resample at the next service interval to monitor. The chromium level is marginal. Moderate concentration of visible metal present. There is no indication of any contamination in the oil. The condition of the oil is acceptable for the time in service.

[view report](#)



22 Jun 2019 Diag: Doug Bogart

NORMAL



Resample at the next service interval to monitor. All component wear rates are normal. There is no indication of any contamination in the component. The condition of the oil is acceptable for the time in service.

[view report](#)



20 May 2018 Diag: Doug Bogart

NORMAL



Resample at the next service interval to monitor. All component wear rates are normal. There is no indication of any contamination in the component. The condition of the oil is acceptable for the time in service.

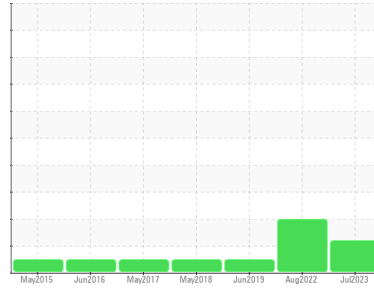
[view report](#)





OIL ANALYSIS REPORT

Sample Rating Trend



WEAR



Machine Id

B1275

Component

Hydraulic System

Fluid

AW HYDRAULIC OIL ISO 46 (--- QTS)

DIAGNOSIS

▲ Recommendation

We recommend you service the filters on this component. Resample at the next service interval to monitor.

▲ Wear

The chromium level is abnormal. All other component wear rates are normal.

▲ Contamination

Moderate concentration of visible dirt/debris present in the oil.

Fluid Condition

The condition of the oil is acceptable for the time in service.

SAMPLE INFORMATION

| | method | limit/base | current | history1 | history2 |
|---------------|-------------|-------------|--------------------|-------------|-------------|
| Sample Number | Client Info | | WC0799357 | WC0719694 | WC0316379 |
| Sample Date | Client Info | | 31 Jul 2023 | 05 Aug 2022 | 22 Jun 2019 |
| Machine Age | hrs | Client Info | 0 | 0 | 0 |
| Oil Age | hrs | Client Info | 0 | 0 | 0 |
| Oil Changed | Client Info | | N/A | N/A | N/A |
| Sample Status | | | ABNORMAL | ABNORMAL | NORMAL |

WEAR METALS

| | method | limit/base | current | history1 | history2 |
|----------|--------|-----------------|--------------|----------|----------|
| Iron | ppm | ASTM D5185m >20 | 4 | 3 | 1 |
| Chromium | ppm | ASTM D5185m >20 | ▲ 20 | ▲ 18 | 2 |
| Nickel | ppm | ASTM D5185m >20 | <1 | 0 | <1 |
| Titanium | ppm | ASTM D5185m | 0 | 0 | 0 |
| Silver | ppm | ASTM D5185m | 0 | <1 | 0 |
| Aluminum | ppm | ASTM D5185m >20 | 1 | 1 | <1 |
| Lead | ppm | ASTM D5185m >20 | 0 | <1 | 0 |
| Copper | ppm | ASTM D5185m >20 | 13 | 13 | 14 |
| Tin | ppm | ASTM D5185m >20 | 0 | <1 | 0 |
| Antimony | ppm | ASTM D5185m | --- | --- | 0 |
| Vanadium | ppm | ASTM D5185m | 0 | 0 | 0 |
| Cadmium | ppm | ASTM D5185m | 0 | <1 | <1 |

ADDITIVES

| | method | limit/base | current | history1 | history2 |
|------------|--------|------------------|-------------|----------|----------|
| Boron | ppm | ASTM D5185m 5 | 22 | 23 | 24 |
| Barium | ppm | ASTM D5185m 5 | 1 | 1 | 0 |
| Molybdenum | ppm | ASTM D5185m 5 | 5 | 6 | 6 |
| Manganese | ppm | ASTM D5185m | 0 | <1 | <1 |
| Magnesium | ppm | ASTM D5185m 25 | 25 | 25 | 30 |
| Calcium | ppm | ASTM D5185m 200 | 125 | 129 | 152 |
| Phosphorus | ppm | ASTM D5185m 300 | 358 | 369 | 376 |
| Zinc | ppm | ASTM D5185m 370 | 439 | 464 | 452 |
| Sulfur | ppm | ASTM D5185m 2500 | 2080 | 2057 | 1937 |

CONTAMINANTS

| | method | limit/base | current | history1 | history2 |
|-----------|--------|-----------------|--------------|----------|----------|
| Silicon | ppm | ASTM D5185m >15 | 2 | 1 | 2 |
| Sodium | ppm | ASTM D5185m | 0 | 0 | <1 |
| Potassium | ppm | ASTM D5185m >20 | <1 | <1 | 0 |

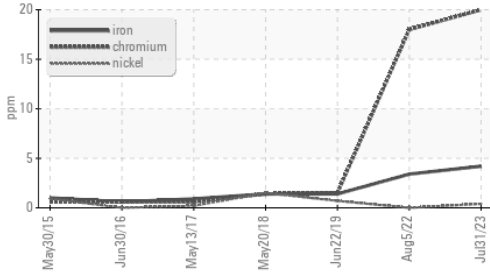
VISUAL

| | method | limit/base | current | history1 | history2 |
|------------------|--------|---------------|----------------|----------|----------|
| White Metal | scalar | *Visual NONE | NONE | ▲ MODER | NONE |
| Yellow Metal | scalar | *Visual NONE | NONE | NONE | NONE |
| Precipitate | scalar | *Visual NONE | NONE | NONE | NONE |
| Silt | scalar | *Visual NONE | NONE | NONE | NONE |
| Debris | scalar | *Visual NONE | ▲ MODER | LIGHT | NONE |
| Sand/Dirt | scalar | *Visual NONE | NONE | NONE | NONE |
| Appearance | scalar | *Visual NORML | NORML | NORML | NORML |
| Odor | scalar | *Visual NORML | NORML | NORML | NORML |
| Emulsified Water | scalar | *Visual >0.05 | NEG | NEG | NEG |
| Free Water | scalar | *Visual | NEG | NEG | NEG |

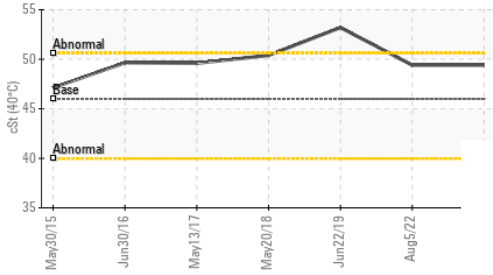


OIL ANALYSIS REPORT

▲ Ferrous Alloys



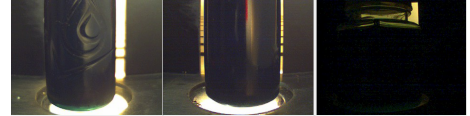
Viscosity @ 40°C



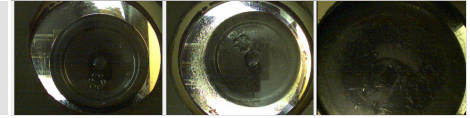
| FLUID PROPERTIES | method | limit/base | current | history1 | history2 |
|------------------|--------|--------------|-------------|----------|----------|
| Visc @ 40°C | cSt | ASTM D445 46 | 49.4 | 49.4 | 53.2 |

| SAMPLE IMAGES | method | limit/base | current | history1 | history2 |
|---------------|--------|------------|---------|----------|----------|
|---------------|--------|------------|---------|----------|----------|

Color

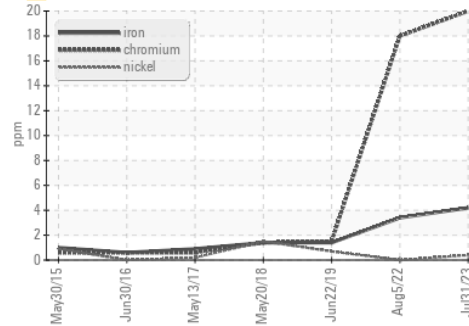


Bottom

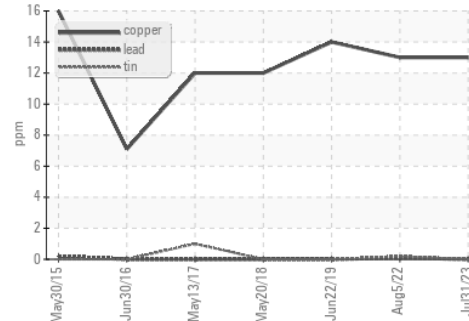


GRAPHS

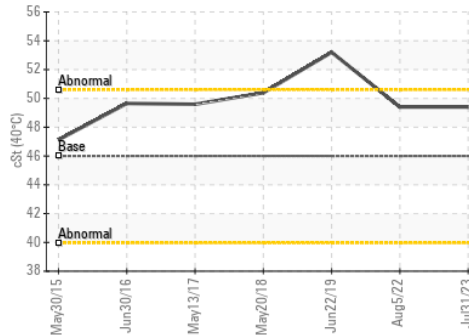
▲ Ferrous Alloys



Non-ferrous Metals



Viscosity @ 40°C



Certificate L2367

Laboratory : WearCheck USA - 501 Madison Ave., Cary, NC 27513
Sample No. : WC0799357 **Received** : 11 Aug 2023
Lab Number : **05922611** **Diagnosed** : 14 Aug 2023
Unique Number : 10602558 **Diagnostician** : Don Baldrige
Test Package : IND 1

To discuss this sample report, contact Customer Service at 1-800-237-1369.

* - Denotes test methods that are outside of the ISO 17025 scope of accreditation.

Statements of conformity to specifications are based on the simple acceptance decision rule (JCGM 106:2012)

SUMIRIKO TENNESSEE INC
 150 HESTER LN
 TAZEWELL, TN
 US 37879

Contact: JEREMY COLLINS
jcollins@us.sumiriko.com

T: (423)626-8805

F: (423)626-2065