



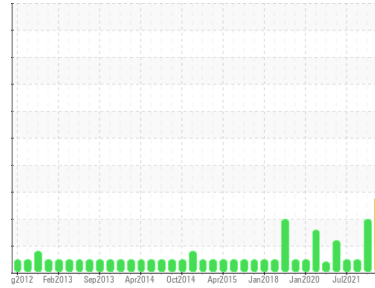
PROBLEM SUMMARY

Sample Rating Trend

ISO

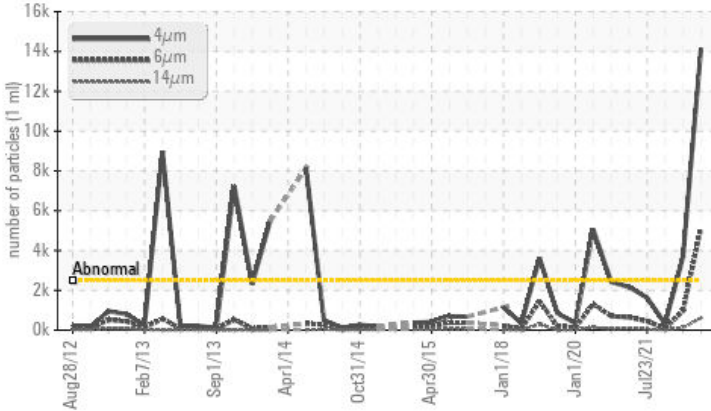


Area
ERNA E HONEYCUTT
 Machine Id
[ERNA E HONEYCUTT] 012 641346-12
 Component
Auxiliary Steering
 Fluid
CHEVRON RANDO HDZ 68 (--- GAL)



COMPONENT CONDITION SUMMARY

▲ Particle Trend



RECOMMENDATION

We recommend you service the filters on this component. Resample at the next service interval to monitor.

PROBLEMATIC TEST RESULTS

Sample Status			ABNORMAL	ATTENTION	NORMAL
Particles >4µm	ASTM D7647	>2500	▲ 14151	▲ 3698	322
Particles >6µm	ASTM D7647	>640	▲ 5127	▲ 974	84
Particles >14µm	ASTM D7647	>80	▲ 618	▲ 121	11
Particles >21µm	ASTM D7647	>20	▲ 219	▲ 31	2
Particles >38µm	ASTM D7647	>4	▲ 16	2	0
Oil Cleanliness	ISO 4406 (c)	>18/16/13	▲ 21/20/16	▲ 19/17/14	16/14/11
Debris	scalar	*Visual	▲ MODER	NONE	NONE

Customer Id: INGPAD
 Sample No.: MW0054375
 Lab Number: 05924145
 Test Package: MAR 2



To manage this report scan the QR code

To discuss the diagnosis or test data:
 Don Baldrige +1
don.b505@comcast.net

To change component or sample information:
 Customer Service +1 1-800-237-1369
customerservice@wearcheck.com

RECOMMENDED ACTIONS

Action	Status	Date	Done By	Description
Change Filter	---	---	?	We recommend you service the filters on this component.

HISTORICAL DIAGNOSIS

23 Jul 2022 Diag: Don Baldrige

ISO



No corrective action is recommended at this time. Resample at the next service interval to monitor. All component wear rates are normal. There is a moderate amount of particulates present in the fluid. The AN level is acceptable for this fluid. The condition of the fluid is suitable for further service.

view report



31 Jan 2022 Diag: Don Baldrige

NORMAL



Resample at the next service interval to monitor. All component wear rates are normal. There is no indication of any contamination in the oil. The amount and size of particulates present in the system are acceptable. The AN level is acceptable for this fluid. The condition of the oil is suitable for further service.

view report



23 Jul 2021 Diag: Don Baldrige

NORMAL



Resample at the next service interval to monitor. All component wear rates are normal. There is no indication of any contamination in the oil. The amount and size of particulates present in the system are acceptable. The AN level is acceptable for this fluid. The condition of the oil is suitable for further service.

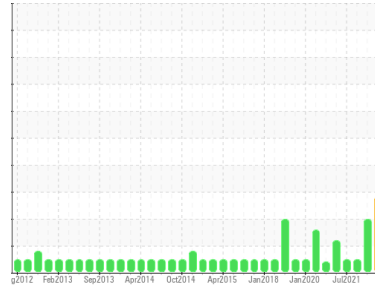
view report





OIL ANALYSIS REPORT

Sample Rating Trend



ISO



Area
ERNA E HONEYCUTT
 Machine Id
[ERNA E HONEYCUTT] 012 641346-12
 Component
Auxiliary Steering
 Fluid
CHEVRON RANDO HDZ 68 (--- GAL)

DIAGNOSIS

Recommendation

We recommend you service the filters on this component. Resample at the next service interval to monitor.

Wear

All component wear rates are normal.

Contamination

There is a high amount of particulates present in the fluid. Moderate concentration of visible dirt/debris present in the fluid.

Fluid Condition

The AN level is acceptable for this fluid. The condition of the fluid is suitable for further service.

SAMPLE INFORMATION

	method	limit/base	current	history1	history2
Sample Number	Client Info		MW0054375	MW0038929	MW0027394
Sample Date	Client Info		28 Jul 2023	23 Jul 2022	31 Jan 2022
Machine Age	hrs	Client Info	0	0	0
Oil Age	hrs	Client Info	3000	0	77885
Oil Changed	Client Info		Not Chngd	N/A	N/A
Sample Status			ABNORMAL	ATTENTION	NORMAL

WEAR METALS

	method	limit/base	current	history1	history2
Iron	ppm	ASTM D5185m >50	<1	<1	<1
Chromium	ppm	ASTM D5185m >15	0	0	<1
Nickel	ppm	ASTM D5185m >5	0	0	0
Titanium	ppm	ASTM D5185m	0	0	0
Silver	ppm	ASTM D5185m	0	0	0
Aluminum	ppm	ASTM D5185m >5	0	0	<1
Lead	ppm	ASTM D5185m >10	0	<1	0
Copper	ppm	ASTM D5185m >50	4	2	2
Tin	ppm	ASTM D5185m >5	0	<1	<1
Antimony	ppm	ASTM D5185m	---	---	0
Vanadium	ppm	ASTM D5185m	0	0	0
Cadmium	ppm	ASTM D5185m	0	0	0

ADDITIVES

	method	limit/base	current	history1	history2
Boron	ppm	ASTM D5185m 0	0	2	1
Barium	ppm	ASTM D5185m 0	0	0	0
Molybdenum	ppm	ASTM D5185m 0	0	<1	<1
Manganese	ppm	ASTM D5185m	0	0	0
Magnesium	ppm	ASTM D5185m 0	0	0	0
Calcium	ppm	ASTM D5185m 75	60	61	60
Phosphorus	ppm	ASTM D5185m 275	372	361	346
Zinc	ppm	ASTM D5185m 350	467	456	477
Sulfur	ppm	ASTM D5185m 550	1240	2294	2239

CONTAMINANTS

	method	limit/base	current	history1	history2
Silicon	ppm	ASTM D5185m >15	<1	0	<1
Sodium	ppm	ASTM D5185m	<1	1	<1
Potassium	ppm	ASTM D5185m >20	0	0	<1

FLUID CLEANLINESS

	method	limit/base	current	history1	history2
Particles >4µm	ASTM D7647	>2500	▲ 14151	▲ 3698	322
Particles >6µm	ASTM D7647	>640	▲ 5127	▲ 974	84
Particles >14µm	ASTM D7647	>80	▲ 618	▲ 121	11
Particles >21µm	ASTM D7647	>20	▲ 219	▲ 31	2
Particles >38µm	ASTM D7647	>4	▲ 16	2	0
Particles >71µm	ASTM D7647	>3	▲ 1	0	0
Oil Cleanliness	ISO 4406 (c)	>18/16/13	▲ 21/20/16	▲ 19/17/14	16/14/11

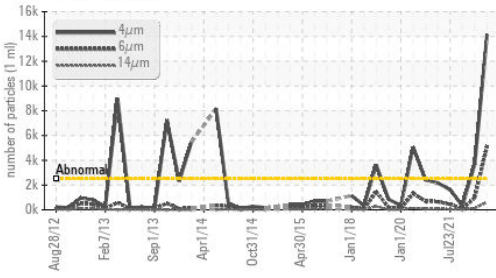
FLUID DEGRADATION

	method	limit/base	current	history1	history2
Acid Number (AN)	mg KOH/g	ASTM D8045	0.45	0.38	0.37

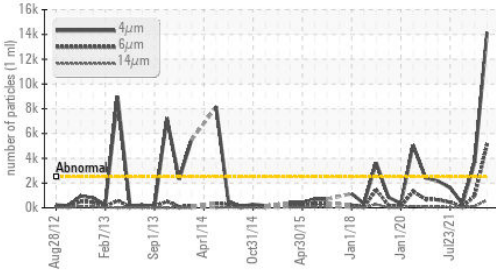


OIL ANALYSIS REPORT

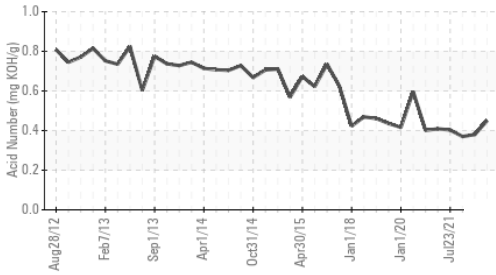
▲ Particle Trend



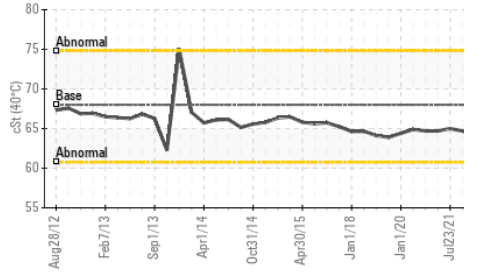
▲ Particle Trend



Acid Number



Viscosity @ 40°C

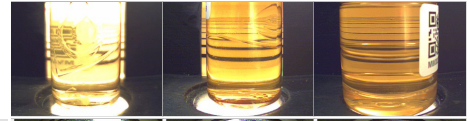


VISUAL	method	limit/base	current	history1	history2
White Metal	scalar	*Visual	NONE	NONE	NONE
Yellow Metal	scalar	*Visual	NONE	NONE	NONE
Precipitate	scalar	*Visual	NONE	NONE	NONE
Silt	scalar	*Visual	NONE	NONE	NONE
Debris	scalar	*Visual	▲ MODER	NONE	NONE
Sand/Dirt	scalar	*Visual	NONE	NONE	NONE
Appearance	scalar	*Visual	NORML	NORML	NORML
Odor	scalar	*Visual	NORML	NORML	NORML
Emulsified Water	scalar	*Visual	>0.2	NEG	NEG
Free Water	scalar	*Visual		NEG	NEG

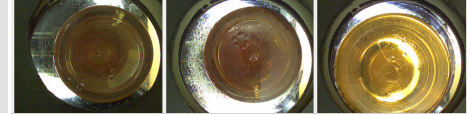
FLUID PROPERTIES	method	limit/base	current	history1	history2
Visc @ 40°C	cSt	ASTM D445	68.0	64.0	64.7

SAMPLE IMAGES	method	limit/base	current	history1	history2
---------------	--------	------------	---------	----------	----------

Color

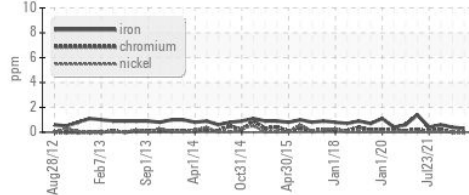


Bottom

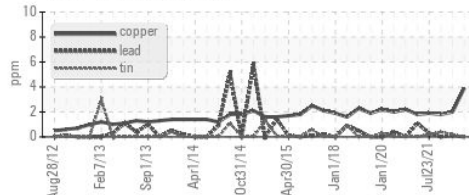


GRAPHS

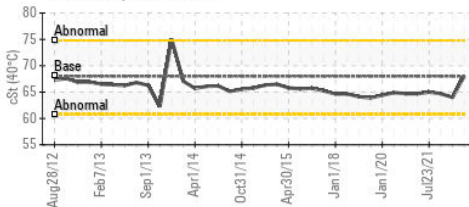
Ferrous Alloys



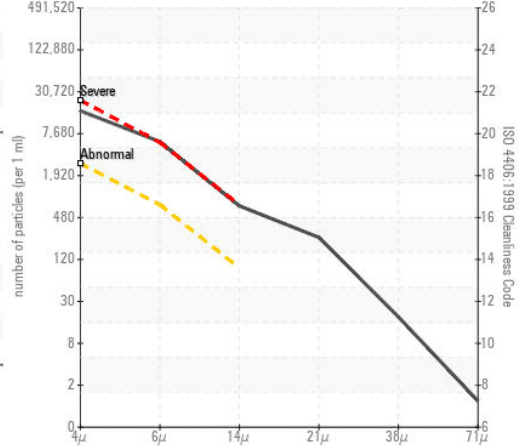
Non-ferrous Metals



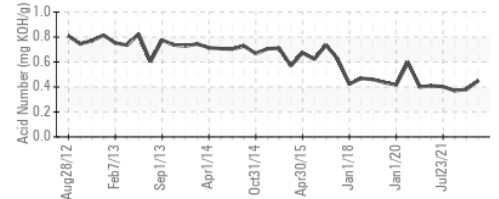
Viscosity @ 40°C



▲ Particle Count



Acid Number



Certificate L2367

Laboratory : WearCheck USA - 501 Madison Ave., Cary, NC 27513
 Sample No. : MW0054375 Received : 14 Aug 2023
 Lab Number : 05924145 Diagnosed : 15 Aug 2023
 Unique Number : 10604092 Diagnostician : Don Baldrige
 Test Package : MAR 2 (Additional Tests: PrtCount)

To discuss this sample report, contact Customer Service at 1-800-237-1369.

* - Denotes test methods that are outside of the ISO 17025 scope of accreditation.

Statements of conformity to specifications are based on the simple acceptance decision rule (JCGM 106:2012)

INGRAM BARGE

900 S 3RD ST
 PADUCAH, KY
 US 42003

Contact: JEFF BISHOP
 jeff.bishop@ingrambarga.com

T:
 F: (615)695-3697