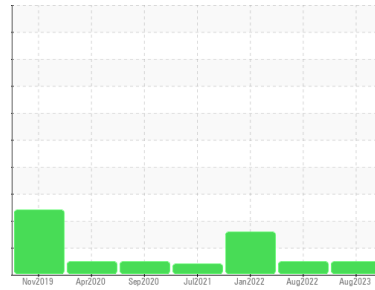




# OIL ANALYSIS REPORT

Sample Rating Trend



**NORMAL**



Machine Id  
**HPDL\_B3420 HPDL\_B3420\_P3420**

Component  
**Drive End Pump**

Fluid  
**ROYAL PURPLE SYNFILM GT 46 (1 QTS)**

## DIAGNOSIS

### Recommendation

Resample at the next service interval to monitor.

### Wear

All component wear rates are normal.

### Contamination

There is no indication of any contamination in the oil.

### Fluid Condition

The AN level is acceptable for this fluid. The condition of the oil is suitable for further service.

## SAMPLE INFORMATION

	method	limit/base	current	history1	history2
Sample Number	Client Info		<b>RP0021953</b>	RP0017607	RP0017772
Sample Date	Client Info		<b>11 Aug 2023</b>	24 Aug 2022	21 Jan 2022
Machine Age	hrs	Client Info	<b>6614</b>	4230	4230
Oil Age	hrs	Client Info	<b>6614</b>	4230	3483
Oil Changed	Client Info		<b>N/A</b>	N/A	N/A
Sample Status			<b>NORMAL</b>	NORMAL	ABNORMAL

## WEAR METALS

	method	limit/base	current	history1	history2
Iron	ppm	ASTM D5185m >75	<b>0</b>	<1	8
Chromium	ppm	ASTM D5185m >5	<b>0</b>	0	0
Nickel	ppm	ASTM D5185m	<b>0</b>	0	0
Titanium	ppm	ASTM D5185m	<b>0</b>	0	0
Silver	ppm	ASTM D5185m	<b>0</b>	0	<1
Aluminum	ppm	ASTM D5185m >5	<b>&lt;1</b>	<1	<1
Lead	ppm	ASTM D5185m >10	<b>0</b>	1	0
Copper	ppm	ASTM D5185m >15	<b>0</b>	1	<1
Tin	ppm	ASTM D5185m	<b>0</b>	<1	<1
Antimony	ppm	ASTM D5185m	<b>---</b>	---	0
Vanadium	ppm	ASTM D5185m	<b>0</b>	0	0
Cadmium	ppm	ASTM D5185m	<b>0</b>	0	0

## ADDITIVES

	method	limit/base	current	history1	history2
Boron	ppm	ASTM D5185m 0	<b>0</b>	0	24
Barium	ppm	ASTM D5185m 0	<b>0</b>	0	0
Molybdenum	ppm	ASTM D5185m 0	<b>0</b>	0	0
Manganese	ppm	ASTM D5185m	<b>&lt;1</b>	0	0
Magnesium	ppm	ASTM D5185m 95	<b>38</b>	87	94
Calcium	ppm	ASTM D5185m 0	<b>0</b>	<1	3
Phosphorus	ppm	ASTM D5185m 0	<b>2</b>	6	2
Zinc	ppm	ASTM D5185m 0	<b>0</b>	<1	0

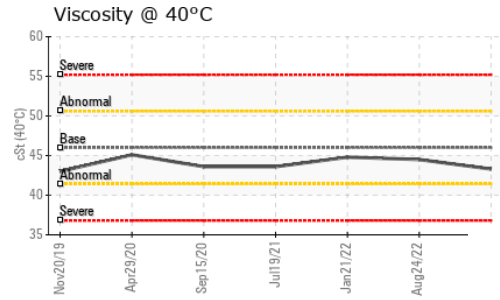
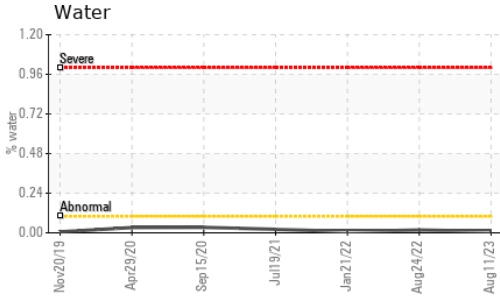
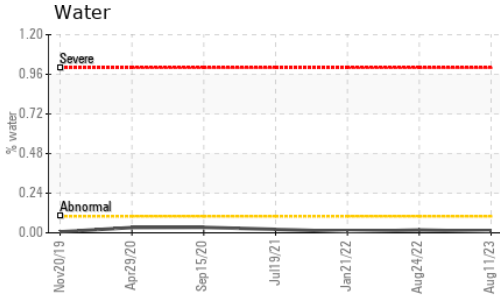
## CONTAMINANTS

	method	limit/base	current	history1	history2
Silicon	ppm	ASTM D5185m >20	<b>1</b>	2	6
Sodium	ppm	ASTM D5185m	<b>&lt;1</b>	0	<1
Potassium	ppm	ASTM D5185m >20	<b>2</b>	0	0
Water	%	ASTM D6304	<b>0.009</b>	0.017	0.008
ppm Water	ppm	ASTM D6304 >.1	<b>98.5</b>	177.3	89.5

## FLUID DEGRADATION

	method	limit/base	current	history1	history2
Acid Number (AN)	mg KOH/g	ASTM D8045	<b>0.31</b>	0.34	0.36

# OIL ANALYSIS REPORT

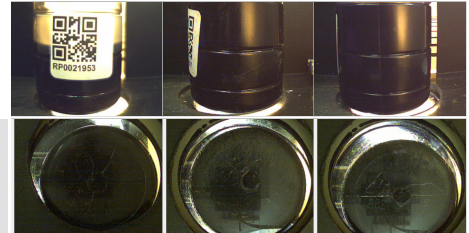


VISUAL	method	limit/base	current	history1	history2
White Metal	scalar	*Visual	NONE	NONE	▲ MODER
Yellow Metal	scalar	*Visual	NONE	NONE	NONE
Precipitate	scalar	*Visual	NONE	NONE	NONE
Silt	scalar	*Visual	NONE	NONE	NONE
Debris	scalar	*Visual	NONE	NONE	▲ MODER
Sand/Dirt	scalar	*Visual	NONE	NONE	NONE
Appearance	scalar	*Visual	NORML	NORML	NORML
Odor	scalar	*Visual	NORML	NORML	NORML
Emulsified Water	scalar	*Visual	NEG	NEG	NEG
Free Water	scalar	*Visual	NEG	NEG	NEG

FLUID PROPERTIES	method	limit/base	current	history1	history2
Visc @ 40°C	cSt	ASTM D445	46.0	43.3	44.5

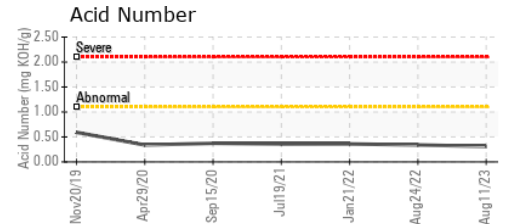
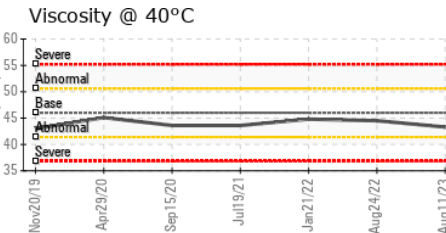
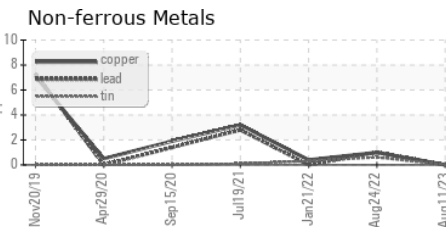
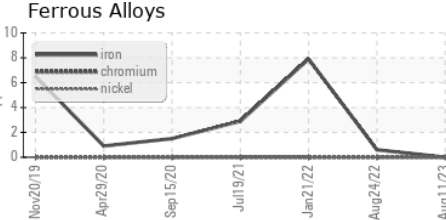
SAMPLE IMAGES	method	limit/base	current	history1	history2
---------------	--------	------------	---------	----------	----------

Color



Bottom

## GRAPHS



Certificate L2367

**Laboratory** : WearCheck USA - 501 Madison Ave., Cary, NC 27513  
**Sample No.** : RP0021953 **Received** : 14 Aug 2023  
**Lab Number** : 05924404 **Diagnosed** : 16 Aug 2023  
**Unique Number** : 10604351 **Diagnostician** : Angela Borella  
**Test Package** : IND 2

**ENERGY TRANSFER - HOPEDALE**  
 46725 GIACOBBI ROAD  
 JEWETT, OH  
 US 43986  
 Contact: KEN VOLL

To discuss this sample report, contact Customer Service at 1-800-237-1369.

\* - Denotes test methods that are outside of the ISO 17025 scope of accreditation.

Statements of conformity to specifications are based on the simple acceptance decision rule (JCGM 106:2012)

T: (330)414-2573

F: