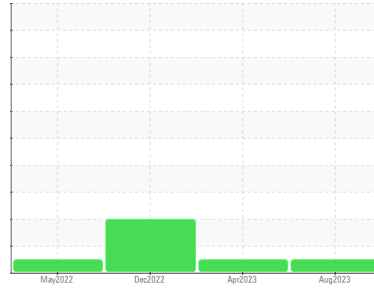




# FUEL REPORT

## Sample Rating Trend

**NORMAL**



Area  
**[AFTER POLISH]**  
 Machine Id  
**CR1221**  
 Component  
**Diesel Fuel**  
 Fluid  
**NOT GIVEN (--- GAL)**

### DIAGNOSIS

#### Recommendation

This is a baseline read-out on the submitted sample. No corrective action is recommended at this time.

#### Corrosion

All metal levels are normal indicating no corrosion in the system.

#### Contaminants

The water content is negligible. There is no indication of any contamination in the fuel.

#### Fuel Condition

The condition of the fuel is acceptable for the time in service.

SAMPLE INFORMATION		method	limit/base	current	history1	history2
Sample Number	Client Info			<b>WC0833400</b>	WC0784851	WC0761866
Sample Date	Client Info			<b>07 Aug 2023</b>	18 Apr 2023	15 Dec 2022
Machine Age	hrs	Client Info		<b>0</b>	2157	1937
Sample Status				<b>NORMAL</b>	NORMAL	ABNORMAL

PHYSICAL PROPERTIES		method	limit/base	current	history1	history2
Visc @ 40°C	cSt	ASTM D445		<b>2.46</b>	2.74	2.56

SULFUR CONTENT		method	limit/base	current	history1	history2
Sulfur	ppm	ASTM D5185m		<b>0</b>	0	2

CONTAMINANTS		method	limit/base	current	history1	history2
Silicon	ppm	ASTM D5185m	<1.0	<b>0</b>	0	0
Sodium	ppm	ASTM D5185m	<0.1	<b>0</b>	0	0
Potassium	ppm	ASTM D5185m	<0.1	<b>&lt;1</b>	<1	<1
Water	%	ASTM D6304	<0.05	<b>0.003</b>	0.003	0.005
ppm Water	ppm	ASTM D6304	<500	<b>39.8</b>	35.5	54.8

FLUID CLEANLINESS		method	limit/base	current	history1	history2
Particles >4µm		ASTM D7647	>2500	---	---	▲ 18087
Particles >6µm		ASTM D7647	>640	---	---	▲ 5235
Particles >14µm		ASTM D7647	>80	---	---	▲ 276
Particles >21µm		ASTM D7647	>20	---	---	▲ 59
Particles >38µm		ASTM D7647	>4	---	---	2
Particles >71µm		ASTM D7647	>3	---	---	0
Oil Cleanliness		ISO 4406 (c)	>18/16/13	---	---	▲ 21/20/15

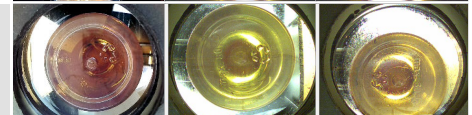
HEAVY METALS		method	limit/base	current	history1	history2
Aluminum	ppm	ASTM D5185m	<0.1	<b>&lt;1</b>	<1	0
Nickel	ppm	ASTM D5185m	<0.1	<b>0</b>	0	0
Lead	ppm	ASTM D5185m	<0.1	<b>0</b>	0	0
Vanadium	ppm	ASTM D5185m	<0.1	<b>0</b>	0	0
Iron	ppm	ASTM D5185m	<0.1	<b>0</b>	0	0
Calcium	ppm	ASTM D5185m	<0.1	<b>0</b>	2	<1
Magnesium	ppm	ASTM D5185m	<0.1	<b>&lt;1</b>	0	<1
Phosphorus	ppm	ASTM D5185m	<0.1	<b>&lt;1</b>	3	9
Zinc	ppm	ASTM D5185m	<0.1	<b>0</b>	0	0

SAMPLE IMAGES		method	limit/base	current	history1	history2
---------------	--	--------	------------	---------	----------	----------

Color

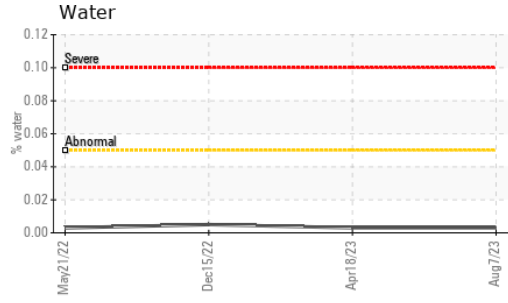


Bottom

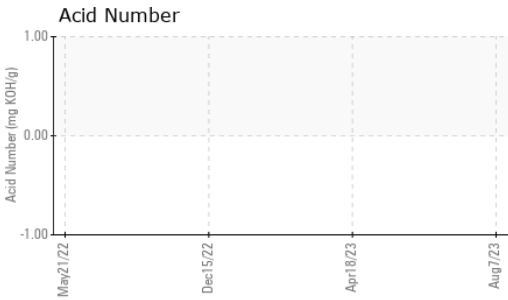
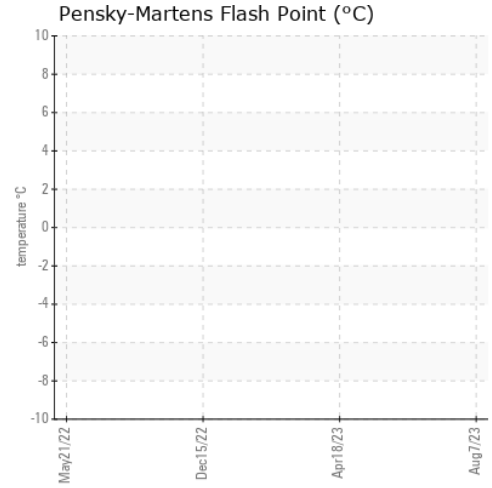
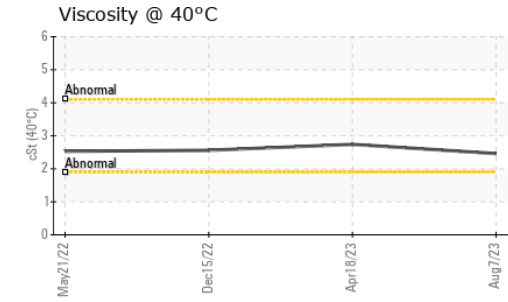




# FUEL REPORT



## GRAPHS



Certificate L2367

**Laboratory** : WearCheck USA - 501 Madison Ave., Cary, NC 27513  
**Sample No.** : WC0833400 **Received** : 15 Aug 2023  
**Lab Number** : 05925706 **Diagnosed** : 17 Aug 2023  
**Unique Number** : 10605653 **Diagnostician** : Jonathan Hester  
**Test Package** : CONST ( Additional Tests: KF, SCREEN )

To discuss this sample report, contact Customer Service at 1-800-237-1369.

\* - Denotes test methods that are outside of the ISO 17025 scope of accreditation.

Statements of conformity to specifications are based on the simple acceptance decision rule (JCGM 106:2012)

**BUCKNER HEAVY LIFT**  
 4732 NC 54 EAST  
 GRAHAM, NC  
 US 27253-9215

Contact: MICHAEL LAWSON  
 michael@bucknercompanies.com

T: (336)376-8888  
 F: (336)376-4090