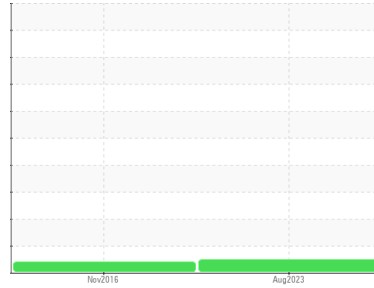




# OIL ANALYSIS REPORT

Sample Rating Trend

**NORMAL**



Machine Id  
**DODGE SCREW PUMP N**  
 Component  
**Pump**  
 Fluid  
**ROYAL PURPLE SYNERGY 90/220 (--- QTS)**

## DIAGNOSIS

### Recommendation

Resample at the next service interval to monitor.

### Wear

All component wear rates are normal.

### Contamination

There is no indication of any contamination in the oil.

### Fluid Condition

The AN level is acceptable for this fluid. The condition of the oil is suitable for further service.

SAMPLE INFORMATION		method	limit/base	current	history1	history2
Sample Number	Client Info			<b>RP0020984</b>	RP187346	---
Sample Date	Client Info			<b>01 Aug 2023</b>	30 Nov 2016	---
Machine Age	hrs	Client Info		<b>51137</b>	0	---
Oil Age	hrs	Client Info		<b>0</b>	0	---
Oil Changed	Client Info			<b>Not Changed</b>	N/A	---
Sample Status				<b>NORMAL</b>	ABNORMAL	---

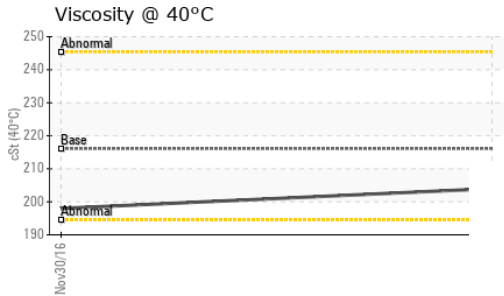
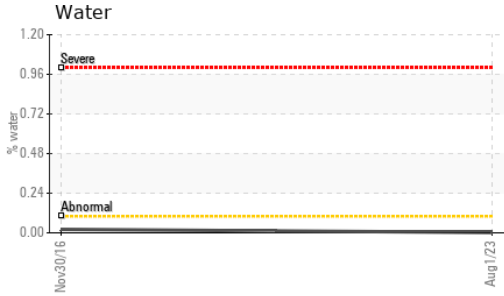
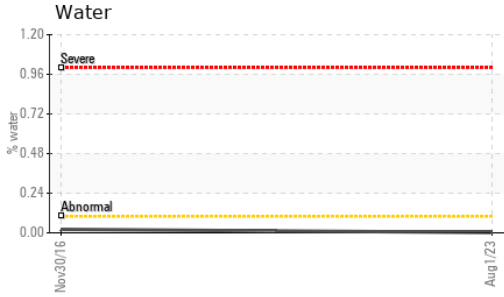
WEAR METALS		method	limit/base	current	history1	history2
Iron	ppm	ASTM D5185m	>90	<b>45</b>	48	---
Chromium	ppm	ASTM D5185m	>5	<b>0</b>	<1	---
Nickel	ppm	ASTM D5185m	>5	<b>0</b>	<1	---
Titanium	ppm	ASTM D5185m	>3	<b>&lt;1</b>	0	---
Silver	ppm	ASTM D5185m	>3	<b>0</b>	0	---
Aluminum	ppm	ASTM D5185m	>7	<b>0</b>	<1	---
Lead	ppm	ASTM D5185m	>12	<b>0</b>	0	---
Copper	ppm	ASTM D5185m	>30	<b>&lt;1</b>	2	---
Tin	ppm	ASTM D5185m	>9	<b>0</b>	0	---
Antimony	ppm	ASTM D5185m		<b>---</b>	55	---
Vanadium	ppm	ASTM D5185m		<b>&lt;1</b>	0	---
Cadmium	ppm	ASTM D5185m		<b>0</b>	<1	---

ADDITIVES		method	limit/base	current	history1	history2
Boron	ppm	ASTM D5185m		<b>0</b>	0	---
Barium	ppm	ASTM D5185m		<b>0</b>	0	---
Molybdenum	ppm	ASTM D5185m		<b>0</b>	0	---
Manganese	ppm	ASTM D5185m		<b>&lt;1</b>	0	---
Magnesium	ppm	ASTM D5185m		<b>2</b>	0	---
Calcium	ppm	ASTM D5185m		<b>10</b>	0	---
Phosphorus	ppm	ASTM D5185m	370	<b>82</b>	100	---
Zinc	ppm	ASTM D5185m		<b>26</b>	10	---

CONTAMINANTS		method	limit/base	current	history1	history2
Silicon	ppm	ASTM D5185m	>60	<b>39</b>	16	---
Sodium	ppm	ASTM D5185m		<b>&lt;1</b>	<1	---
Potassium	ppm	ASTM D5185m	>20	<b>1</b>	0	---
Water	%	ASTM D6304		<b>0.002</b>	0.021	---
ppm Water	ppm	ASTM D6304	>.1	<b>20.3</b>	210	---

FLUID DEGRADATION		method	limit/base	current	history1	history2
Acid Number (AN)	mg KOH/g	ASTM D8045	1.33	<b>0.23</b>	0.514	---

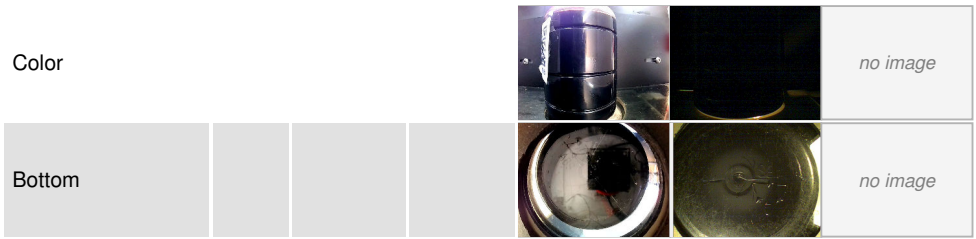
# OIL ANALYSIS REPORT



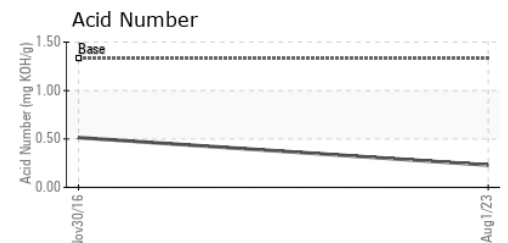
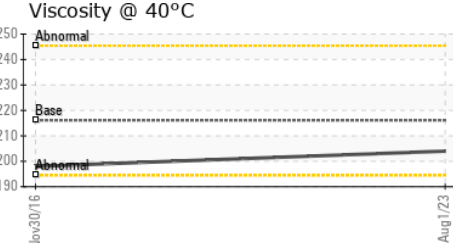
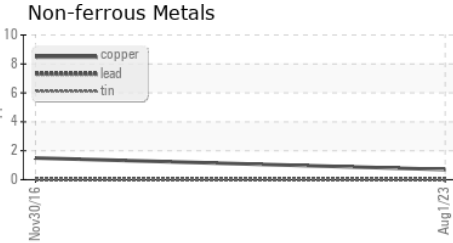
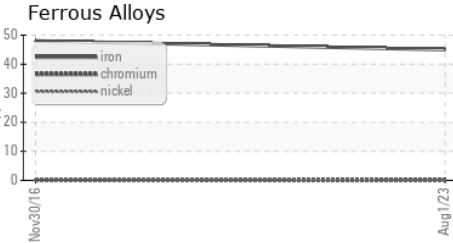
VISUAL	method	limit/base	current	history1	history2	
White Metal	scalar	*Visual	NONE	<b>MODER</b>	NONE	---
Yellow Metal	scalar	*Visual	NONE	<b>NONE</b>	NONE	---
Precipitate	scalar	*Visual	NONE	<b>NONE</b>	NONE	---
Silt	scalar	*Visual	NONE	<b>NONE</b>	NONE	---
Debris	scalar	*Visual	NONE	<b>NONE</b>	▲ MODER	---
Sand/Dirt	scalar	*Visual	NONE	<b>NONE</b>	NONE	---
Appearance	scalar	*Visual	NORML	<b>NORML</b>	NORML	---
Odor	scalar	*Visual	NORML	<b>NORML</b>	NORML	---
Emulsified Water	scalar	*Visual	<b>NEG</b>	NEG	---	---
Free Water	scalar	*Visual	<b>NEG</b>	NEG	---	---

FLUID PROPERTIES	method	limit/base	current	history1	history2	
Visc @ 40°C	cSt	ASTM D445	216.1	<b>204</b>	198.0	---

SAMPLE IMAGES	method	limit/base	current	history1	history2
---------------	--------	------------	---------	----------	----------



## GRAPHS



Certificate L2367

**Laboratory** : WearCheck USA - 501 Madison Ave., Cary, NC 27513  
**Sample No.** : RP0020984 **Received** : 16 Aug 2023  
**Lab Number** : **05926184** **Diagnosed** : 17 Aug 2023  
**Unique Number** : 10606131 **Diagnostician** : Don Baldrige  
**Test Package** : IND 2

**VISION INDUSTRIAL SALES**  
 132 SOUTH MOUNT VERNON DR  
 IOWA CITY, IA  
 US 52245

Contact: LEESA ELSEMAN  
 vision@mchsi.com; jon.fazenbaker@wearcheck.com  
 T: (319)341-5823  
 F: (319)341-7867

To discuss this sample report, contact Customer Service at 1-800-237-1369.

\* - Denotes test methods that are outside of the ISO 17025 scope of accreditation.

Statements of conformity to specifications are based on the simple acceptance decision rule (JCGM 106:2012)