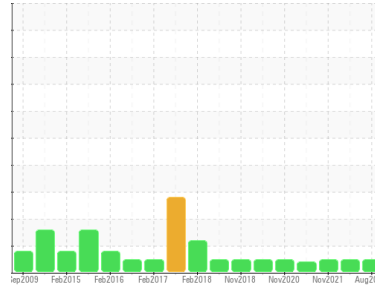




# OIL ANALYSIS REPORT

Sample Rating Trend



**NORMAL**



Area  
**CM102**  
Machine Id  
**0004-1020 PRIMARY**  
Component  
**Gearbox**  
Fluid  
**GEAR OIL FG ISO 460 (2 GAL)**

## DIAGNOSIS

### Recommendation

Resample at the next service interval to monitor. ( Customer Sample Comment: Periodic oil sample )

### Wear

All component wear rates are normal.

### Contamination

There is no indication of any contamination in the oil.

### Fluid Condition

The AN level is acceptable for this fluid. The condition of the oil is suitable for further service.

## SAMPLE INFORMATION

|               | method      | limit/base  | current            | history1    | history2    |
|---------------|-------------|-------------|--------------------|-------------|-------------|
| Sample Number | Client Info |             | <b>WC0834240</b>   | WC0705001   | WC0639825   |
| Sample Date   | Client Info |             | <b>10 Aug 2023</b> | 10 Aug 2022 | 11 Nov 2021 |
| Machine Age   | mths        | Client Info | <b>25</b>          | 0           | 0           |
| Oil Age       | mths        | Client Info | <b>25</b>          | 0           | 0           |
| Oil Changed   | Client Info |             | <b>Not Chngd</b>   | Not Chngd   | Not Chngd   |
| Sample Status |             |             | <b>NORMAL</b>      | NORMAL      | NORMAL      |

## WEAR METALS

|          | method | limit/base       | current      | history1 | history2 |
|----------|--------|------------------|--------------|----------|----------|
| Iron     | ppm    | ASTM D5185m >200 | <b>16</b>    | 18       | 11       |
| Chromium | ppm    | ASTM D5185m >15  | <b>0</b>     | 0        | 0        |
| Nickel   | ppm    | ASTM D5185m >15  | <b>0</b>     | 0        | 0        |
| Titanium | ppm    | ASTM D5185m      | <b>0</b>     | 0        | 0        |
| Silver   | ppm    | ASTM D5185m      | <b>0</b>     | <1       | 0        |
| Aluminum | ppm    | ASTM D5185m >25  | <b>0</b>     | <1       | <1       |
| Lead     | ppm    | ASTM D5185m >100 | <b>0</b>     | 0        | 0        |
| Copper   | ppm    | ASTM D5185m >200 | <b>13</b>    | 24       | 9        |
| Tin      | ppm    | ASTM D5185m >25  | <b>&lt;1</b> | 2        | <1       |
| Antimony | ppm    | ASTM D5185m >5   | <b>---</b>   | ---      | 0        |
| Vanadium | ppm    | ASTM D5185m      | <b>&lt;1</b> | 0        | 0        |
| Cadmium  | ppm    | ASTM D5185m      | <b>0</b>     | 0        | 0        |

## ADDITIVES

|            | method | limit/base      | current      | history1 | history2 |
|------------|--------|-----------------|--------------|----------|----------|
| Boron      | ppm    | ASTM D5185m 5   | <b>5</b>     | 11       | 2        |
| Barium     | ppm    | ASTM D5185m 5   | <b>0</b>     | 0        | 0        |
| Molybdenum | ppm    | ASTM D5185m 5   | <b>6</b>     | 6        | 1        |
| Manganese  | ppm    | ASTM D5185m     | <b>&lt;1</b> | <1       | 0        |
| Magnesium  | ppm    | ASTM D5185m 5   | <b>3</b>     | 0        | <1       |
| Calcium    | ppm    | ASTM D5185m 12  | <b>17</b>    | 16       | 7        |
| Phosphorus | ppm    | ASTM D5185m 400 | <b>519</b>   | 464      | 445      |
| Zinc       | ppm    | ASTM D5185m 12  | <b>11</b>    | 11       | 6        |
| Sulfur     | ppm    | ASTM D5185m 750 | <b>792</b>   | 572      | 520      |

## CONTAMINANTS

|           | method | limit/base      | current      | history1 | history2 |
|-----------|--------|-----------------|--------------|----------|----------|
| Silicon   | ppm    | ASTM D5185m >50 | <b>1</b>     | <1       | <1       |
| Sodium    | ppm    | ASTM D5185m     | <b>&lt;1</b> | 0        | 0        |
| Potassium | ppm    | ASTM D5185m >20 | <b>14</b>    | 12       | 0        |

## FLUID DEGRADATION

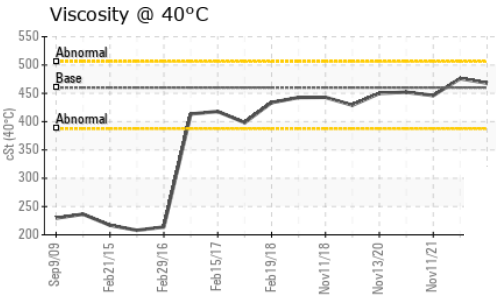
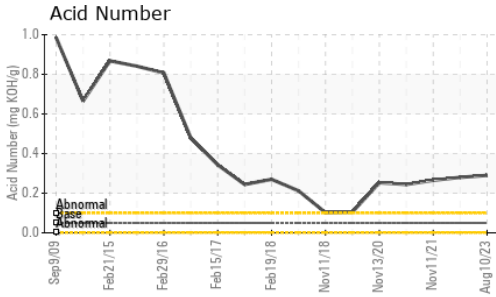
|                  | method   | limit/base      | current     | history1 | history2 |
|------------------|----------|-----------------|-------------|----------|----------|
| Acid Number (AN) | mg KOH/g | ASTM D8045 0.05 | <b>0.29</b> | 0.28     | 0.265    |

## VISUAL

|                  | method | limit/base    | current      | history1 | history2 |
|------------------|--------|---------------|--------------|----------|----------|
| White Metal      | scalar | *Visual NONE  | <b>NONE</b>  | NONE     | NONE     |
| Yellow Metal     | scalar | *Visual NONE  | <b>NONE</b>  | NONE     | NONE     |
| Precipitate      | scalar | *Visual NONE  | <b>NONE</b>  | NONE     | NONE     |
| Silt             | scalar | *Visual NONE  | <b>NONE</b>  | NONE     | NONE     |
| Debris           | scalar | *Visual NONE  | <b>NONE</b>  | NONE     | NONE     |
| Sand/Dirt        | scalar | *Visual NONE  | <b>NONE</b>  | NONE     | NONE     |
| Appearance       | scalar | *Visual NORML | <b>NORML</b> | NORML    | NORML    |
| Odor             | scalar | *Visual NORML | <b>NORML</b> | NORML    | NORML    |
| Emulsified Water | scalar | *Visual >0.2  | <b>NEG</b>   | NEG      | NEG      |
| Free Water       | scalar | *Visual       | <b>NEG</b>   | NEG      | NEG      |

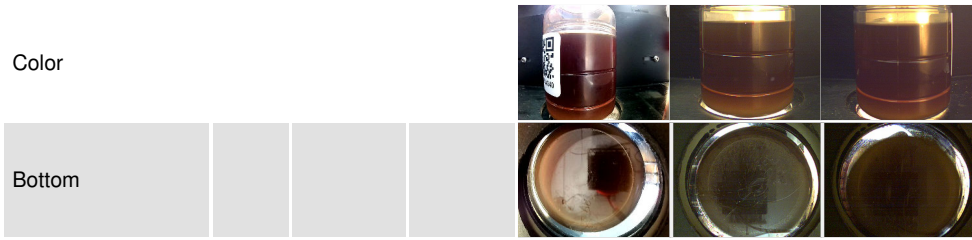


# OIL ANALYSIS REPORT

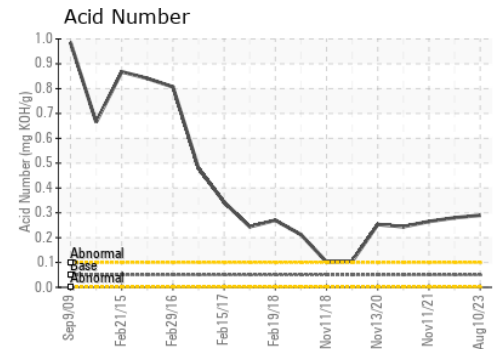
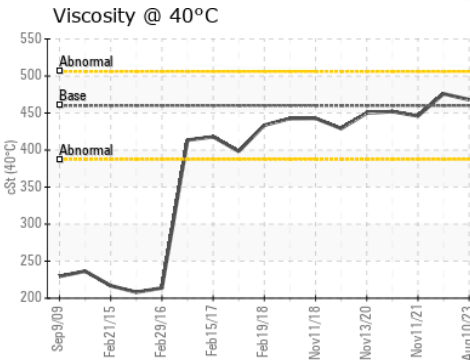
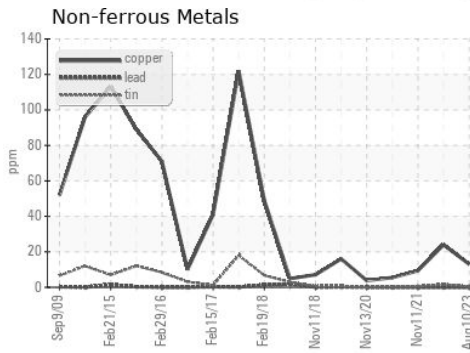
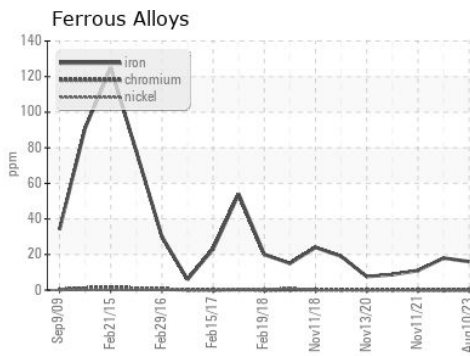


| FLUID PROPERTIES | method | limit/base | current | history1   | history2 |     |
|------------------|--------|------------|---------|------------|----------|-----|
| Visc @ 40°C      | cSt    | ASTM D445  | 460     | <b>468</b> | 476      | 446 |

| SAMPLE IMAGES | method | limit/base | current | history1 | history2 |
|---------------|--------|------------|---------|----------|----------|
|---------------|--------|------------|---------|----------|----------|



## GRAPHS



Certificate L2367

**Laboratory** : WearCheck USA - 501 Madison Ave., Cary, NC 27513  
**Sample No.** : WC0834240 **Received** : 16 Aug 2023  
**Lab Number** : **05926244** **Diagnosed** : 17 Aug 2023  
**Unique Number** : 10606191 **Diagnostician** : Don Baldrige  
**Test Package** : IND 2

**LEPRINO FOODS-FORT MORGAN**  
 2400 EAST BEAVER AVE  
 FORT MORGAN, CO  
 US 80701  
 Contact: KEITH SCHULTE  
 kschulte@leprinofoods.com  
 T: (970)542-4247  
 F: (970)542-4241

To discuss this sample report, contact Customer Service at 1-800-237-1369.

\* - Denotes test methods that are outside of the ISO 17025 scope of accreditation.

Statements of conformity to specifications are based on the simple acceptance decision rule (JCGM 106:2012)