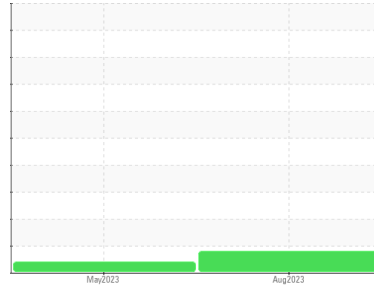


FUEL REPORT

Sample Rating Trend

SEDIMENT



Area
[X47389]
 Machine Id
VOLVO A25G 752644
 Component
Diesel Fuel
 Fluid
NOT GIVEN (--- GAL)

DIAGNOSIS

▲ Recommendation

This is a baseline read-out on the submitted sample. We recommend you service the filters on this component.

Corrosion

All metal levels are normal indicating no corrosion in the system.

▲ Contaminants

There is a moderate amount of visible silt present in the sample. The water content is negligible.

Fuel Condition

The condition of the fuel is acceptable for the time in service.

SAMPLE INFORMATION

	method	limit/base	current	history1	history2
Sample Number	Client Info		VCP415861	VCP407873	---
Sample Date	Client Info		10 Aug 2023	16 May 2023	---
Machine Age	hrs	Client Info	1428	770	---
Sample Status			ABNORMAL	ABNORMAL	---

PHYSICAL PROPERTIES

	method	limit/base	current	history1	history2
Visc @ 40°C	cSt	ASTM D445	2.56	2.53	---

SULFUR CONTENT

	method	limit/base	current	history1	history2
Sulfur	ppm	ASTM D5185m	0	68	---

CONTAMINANTS

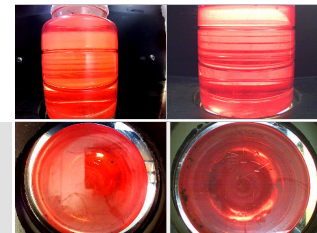
	method	limit/base	current	history1	history2
Silicon	ppm	ASTM D5185m	<1.0	0	<1
Sodium	ppm	ASTM D5185m	<0.1	0	0
Potassium	ppm	ASTM D5185m	<0.1	<1	<1
Water	%	ASTM D6304	<0.05	0.004	0.004
ppm Water	ppm	ASTM D6304	<500	40.4	45.5

HEAVY METALS

	method	limit/base	current	history1	history2
Aluminum	ppm	ASTM D5185m	<0.1	0	0
Nickel	ppm	ASTM D5185m	<0.1	0	<1
Lead	ppm	ASTM D5185m	<0.1	0	<1
Vanadium	ppm	ASTM D5185m	<0.1	0	0
Iron	ppm	ASTM D5185m	<0.1	0	0
Calcium	ppm	ASTM D5185m	<0.1	0	0
Magnesium	ppm	ASTM D5185m	<0.1	0	2
Phosphorus	ppm	ASTM D5185m	<0.1	<1	0
Zinc	ppm	ASTM D5185m	<0.1	0	0

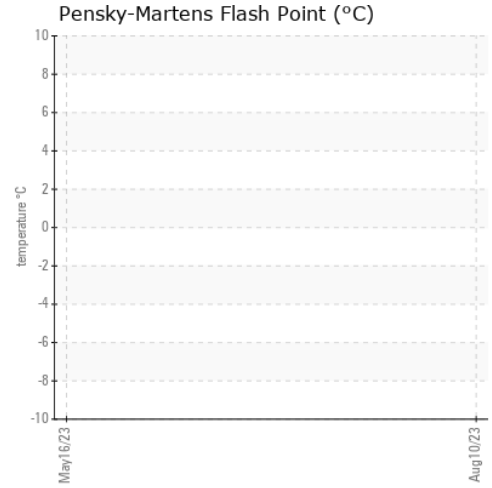
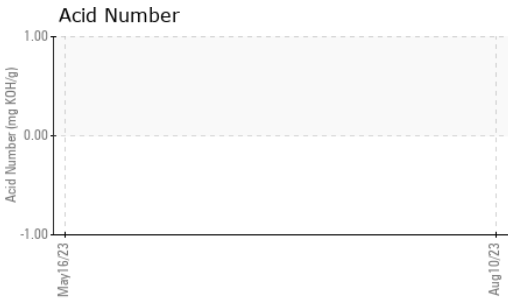
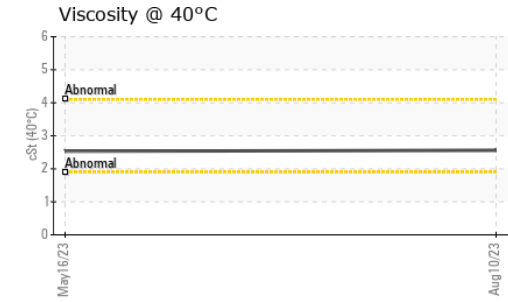
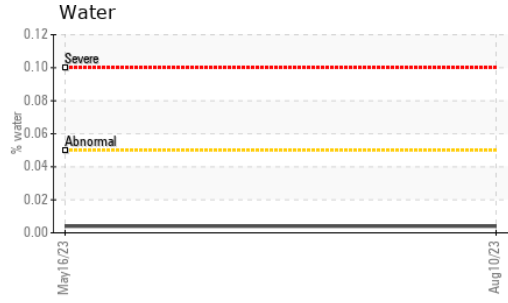
SAMPLE IMAGES

	method	limit/base	current	history1	history2
Color					<i>no image</i>
Bottom					<i>no image</i>



FUEL REPORT

GRAPHS



Certificate L2367

Laboratory : WearCheck USA - 501 Madison Ave., Cary, NC 27513
Sample No. : VCP415861 **Received** : 16 Aug 2023
Lab Number : 05926507 **Diagnosed** : 18 Aug 2023
Unique Number : 10606454 **Diagnostician** : Jonathan Hester
Test Package : MOB 1 (Additional Tests: KF)

SCOTT EQUIPMENT COMPANY LLC - Lake Charles
 PO BOX 16955
 LAKE CHARLES, LA
 US 70616
 Contact: SAMANTHA SOILEAU
 ssoileau@scottcompanies.com
 T: (337)433-9811
 F: (318)433-6623

To discuss this sample report, contact Customer Service at 1-800-237-1369.

* - Denotes test methods that are outside of the ISO 17025 scope of accreditation.

Statements of conformity to specifications are based on the simple acceptance decision rule (JCGM 106:2012)