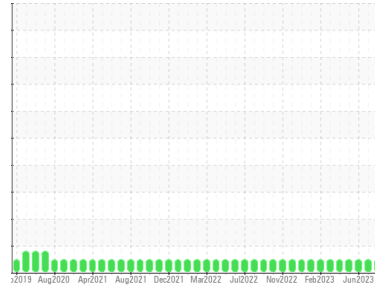




# OIL ANALYSIS REPORT

Sample Rating Trend



**NORMAL**



Area  
**Findlay**  
 Machine Id  
**[Findlay] Oil - Port Reduction Gear**  
 Component  
**Port Reduction Gear**  
 Fluid  
**MARATHON SAE 40 (35 GAL)**

## DIAGNOSIS

### Recommendation

Resample at the next service interval to monitor.

### Wear

All component wear rates are normal.

### Contamination

There is no indication of any contamination in the oil.

### Fluid Condition

The AN level is acceptable for this fluid. The condition of the oil is suitable for further service.

## SAMPLE INFORMATION

	method	limit/base	current	history1	history2
Sample Number	Client Info		<b>WC0769024</b>	WC0769470	WC0769535
Sample Date	Client Info		<b>09 Aug 2023</b>	15 Jul 2023	15 Jun 2023
Machine Age	hrs	Client Info	<b>22128</b>	21655	21382
Oil Age	hrs	Client Info	<b>19901</b>	19428	18786
Oil Changed	Client Info		<b>Filtered</b>	Not Changd	Filtered
Sample Status			<b>NORMAL</b>	NORMAL	NORMAL

## WEAR METALS

	method	limit/base	current	history1	history2
Iron	ppm	ASTM D5185m >150	<b>14</b>	21	20
Chromium	ppm	ASTM D5185m >10	<b>&lt;1</b>	0	<1
Nickel	ppm	ASTM D5185m >10	<b>0</b>	0	<1
Titanium	ppm	ASTM D5185m	<b>&lt;1</b>	0	0
Silver	ppm	ASTM D5185m	<b>0</b>	<1	0
Aluminum	ppm	ASTM D5185m >25	<b>&lt;1</b>	<1	<1
Lead	ppm	ASTM D5185m >100	<b>&lt;1</b>	<1	0
Copper	ppm	ASTM D5185m >50	<b>3</b>	2	2
Tin	ppm	ASTM D5185m >10	<b>&lt;1</b>	<1	0
Vanadium	ppm	ASTM D5185m	<b>&lt;1</b>	0	0
Cadmium	ppm	ASTM D5185m	<b>&lt;1</b>	0	0

## ADDITIVES

	method	limit/base	current	history1	history2
Boron	ppm	ASTM D5185m	<b>20</b>	20	21
Barium	ppm	ASTM D5185m	<b>0</b>	1	0
Molybdenum	ppm	ASTM D5185m	<b>48</b>	52	48
Manganese	ppm	ASTM D5185m	<b>&lt;1</b>	<1	<1
Magnesium	ppm	ASTM D5185m	<b>709</b>	693	755
Calcium	ppm	ASTM D5185m	<b>863</b>	920	874
Phosphorus	ppm	ASTM D5185m	<b>789</b>	828	849
Zinc	ppm	ASTM D5185m	<b>913</b>	958	1016
Sulfur	ppm	ASTM D5185m	<b>2834</b>	2611	3259

## CONTAMINANTS

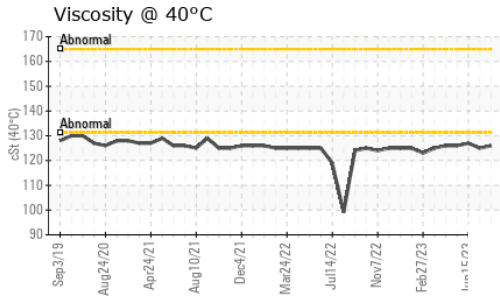
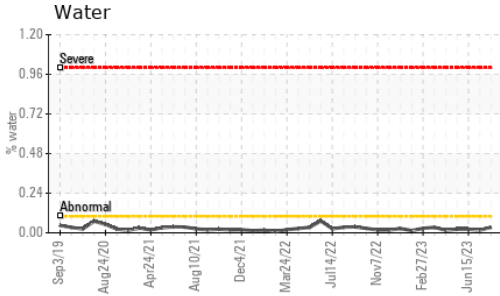
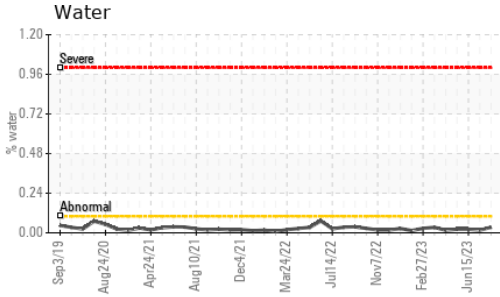
	method	limit/base	current	history1	history2
Silicon	ppm	ASTM D5185m >50	<b>2</b>	3	4
Sodium	ppm	ASTM D5185m	<b>5</b>	0	3
Potassium	ppm	ASTM D5185m >20	<b>2</b>	2	3
Water	%	ASTM D6304 >0.1	<b>0.034</b>	0.016	0.022
ppm Water	ppm	ASTM D6304 >1000	<b>347.8</b>	161.2	228.6

## FLUID DEGRADATION

	method	limit/base	current	history1	history2
Acid Number (AN)	mg KOH/g	ASTM D8045	<b>0.71</b>	1.355	0.73



# OIL ANALYSIS REPORT

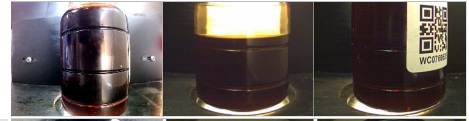


VISUAL	method	limit/base	current	history1	history2
White Metal	scalar	*Visual	NONE	<b>LIGHT</b>	NONE
Yellow Metal	scalar	*Visual	NONE	<b>NONE</b>	NONE
Precipitate	scalar	*Visual	NONE	<b>NONE</b>	NONE
Silt	scalar	*Visual	NONE	<b>NONE</b>	NONE
Debris	scalar	*Visual	NONE	<b>NONE</b>	NONE
Sand/Dirt	scalar	*Visual	NONE	<b>NONE</b>	NONE
Appearance	scalar	*Visual	NORML	<b>NORML</b>	NORML
Odor	scalar	*Visual	NORML	<b>NORML</b>	NORML
Emulsified Water	scalar	*Visual	>0.1	<b>NEG</b>	NEG
Free Water	scalar	*Visual		<b>NEG</b>	NEG

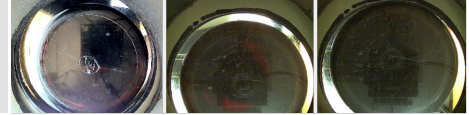
FLUID PROPERTIES	method	limit/base	current	history1	history2
Visc @ 40°C	cSt	ASTM D445	<b>126</b>	125	127

SAMPLE IMAGES	method	limit/base	current	history1	history2
---------------	--------	------------	---------	----------	----------

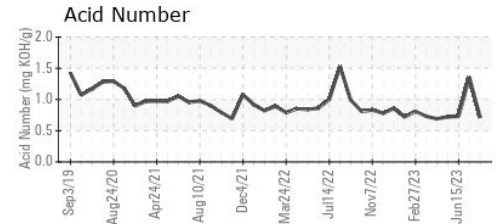
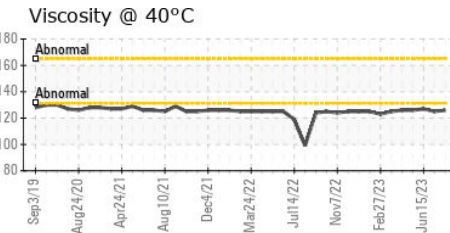
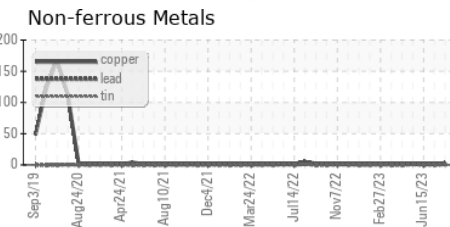
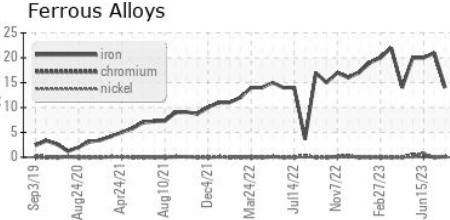
Color



Bottom



## GRAPHS



Certificate L2367

Laboratory : WearCheck USA - 501 Madison Ave., Cary, NC 27513  
 Sample No. : WC0769024 Received : 17 Aug 2023  
 Lab Number : 05927313 Diagnosed : 18 Aug 2023  
 Unique Number : 10607260 Diagnostician : Doug Bogart  
 Test Package : IND 2 ( Additional Tests: KF )

To discuss this sample report, contact Customer Service at 1-800-237-1369.

\* - Denotes test methods that are outside of the ISO 17025 scope of accreditation.

Statements of conformity to specifications are based on the simple acceptance decision rule (JCGM 106:2012)

**MARATHON PETROLEUM CO.**  
 101 12TH ST  
 CATLETTSBURG, KY  
 US 41169

Contact: SHAWN MCCLASKEY  
 stmccclaskey@marathonpetroleum.com

T: (606)739-2416

F: x: