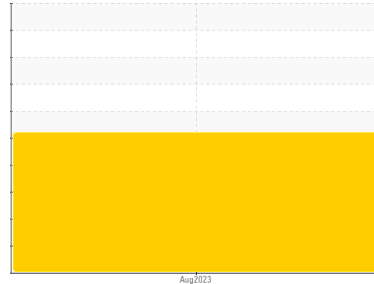




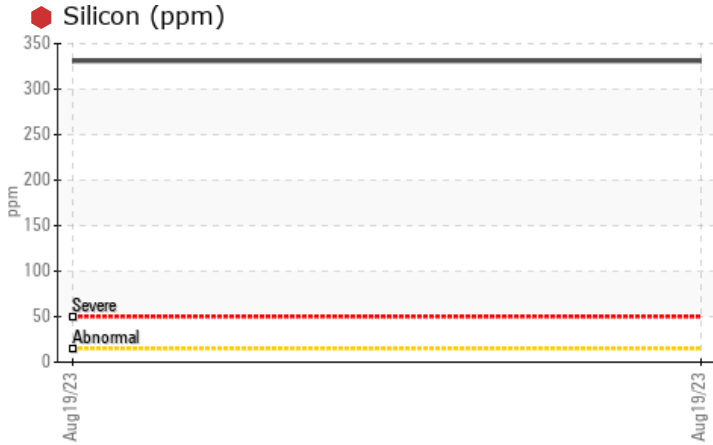
PROBLEM SUMMARY

Area
[185230-N2STV4W]
 Machine Id
E-2
 Component
Hydraulic System
 Fluid
NOT GIVEN (--- GAL)

Sample Rating Trend



COMPONENT CONDITION SUMMARY



RECOMMENDATION

We recommend you service the filters on this component. We recommend an early resample to monitor this condition. We were unable to perform a particle count due to a high concentration of particles present in this sample.

PROBLEMATIC TEST RESULTS

Sample Status				SEVERE	---	---
Silicon	ppm	ASTM D5185m	>15	331	---	---
Debris	scalar	*Visual	NONE	MODER	---	---
PrtFilter					no image	no image

Customer Id: TREPAS
 Sample No.: PH05928125
 Lab Number: 05928125
 Test Package: PLANT



To manage this report scan the QR code

To discuss the diagnosis or test data:
 Jonathan Hester +1 919-379-4092 x4092
jhester@wearcheckusa.com

To change component or sample information:
 Customer Service +1 1-800-237-1369
customerservice@wearcheck.com

RECOMMENDED ACTIONS

Action	Status	Date	Done By	Description
Change Filter	---	---	?	We recommend you service the filters on this component.
Resample	---	---	?	We recommend an early resample to monitor this condition.
Alert	---	---	?	We were unable to perform a particle count due to a high concentration of particles present in this sample.

HISTORICAL DIAGNOSIS



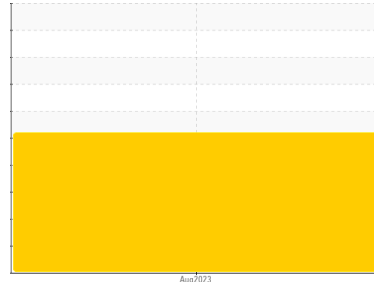
OIL ANALYSIS REPORT

Sample Rating Trend

DIRT



Area
[185230-N2STV4W]
 Machine Id
E-2
 Component
Hydraulic System
 Fluid
NOT GIVEN (--- GAL)



DIAGNOSIS

Recommendation

We recommend you service the filters on this component. We recommend an early resample to monitor this condition. We were unable to perform a particle count due to a high concentration of particles present in this sample.

Wear

All component wear rates are normal.

Contamination

Elemental level of silicon (Si) above normal indicating ingress of seal material. Moderate concentration of visible dirt/debris present in the oil.

Fluid Condition

The AN level is acceptable for this fluid.

SAMPLE INFORMATION

	method	limit/base	current	history1	history2
Sample Number	Client Info		PH05928125	---	---
Sample Date	Client Info		19 Aug 2023	---	---
Machine Age	hrs	Client Info	0	---	---
Oil Age	hrs	Client Info	0	---	---
Oil Changed	Client Info		N/A	---	---
Sample Status			SEVERE	---	---

WEAR METALS

	method	limit/base	current	history1	history2
Iron	ppm	ASTM D5185m >20	<1	---	---
Chromium	ppm	ASTM D5185m >20	0	---	---
Nickel	ppm	ASTM D5185m >20	<1	---	---
Titanium	ppm	ASTM D5185m	0	---	---
Silver	ppm	ASTM D5185m	<1	---	---
Aluminum	ppm	ASTM D5185m >20	0	---	---
Lead	ppm	ASTM D5185m >20	0	---	---
Copper	ppm	ASTM D5185m >20	<1	---	---
Tin	ppm	ASTM D5185m >20	0	---	---
Vanadium	ppm	ASTM D5185m	0	---	---
Cadmium	ppm	ASTM D5185m	0	---	---

ADDITIVES

	method	limit/base	current	history1	history2
Boron	ppm	ASTM D5185m	0	---	---
Barium	ppm	ASTM D5185m	0	---	---
Molybdenum	ppm	ASTM D5185m	<1	---	---
Manganese	ppm	ASTM D5185m	0	---	---
Magnesium	ppm	ASTM D5185m	0	---	---
Calcium	ppm	ASTM D5185m	<1	---	---
Phosphorus	ppm	ASTM D5185m	2	---	---
Zinc	ppm	ASTM D5185m	0	---	---
Sulfur	ppm	ASTM D5185m	4359	---	---

CONTAMINANTS

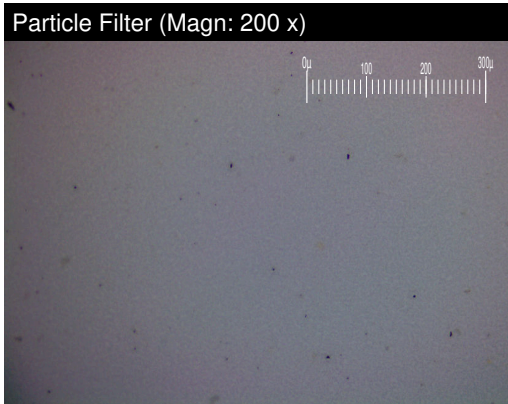
	method	limit/base	current	history1	history2
Silicon	ppm	ASTM D5185m >15	331	---	---
Sodium	ppm	ASTM D5185m	1	---	---
Potassium	ppm	ASTM D5185m >20	2	---	---

FLUID DEGRADATION

	method	limit/base	current	history1	history2
Acid Number (AN)	mg KOH/g	ASTM D8045	0.17	---	---

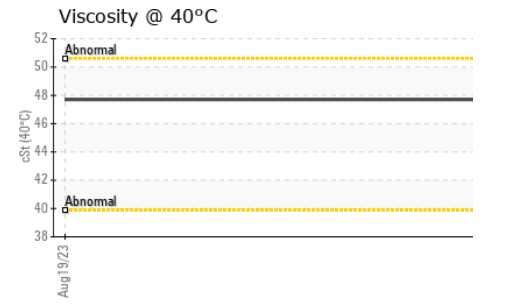
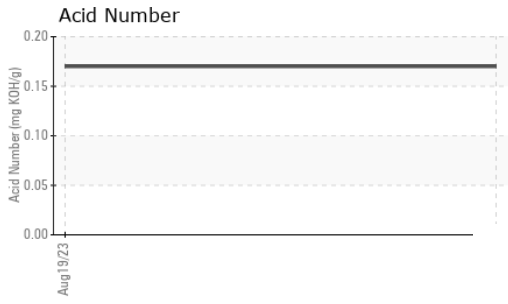
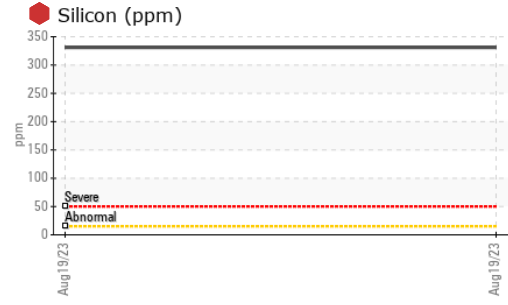
VISUAL

	method	limit/base	current	history1	history2
White Metal	scalar	*Visual NONE	NONE	---	---
Yellow Metal	scalar	*Visual NONE	NONE	---	---
Precipitate	scalar	*Visual NONE	NONE	---	---
Silt	scalar	*Visual NONE	NONE	---	---
Debris	scalar	*Visual NONE	MODER	---	---
Sand/Dirt	scalar	*Visual NONE	NONE	---	---
Appearance	scalar	*Visual NORML	NORML	---	---
Odor	scalar	*Visual NORML	NORML	---	---
Emulsified Water	scalar	*Visual >0.05	NEG	---	---
Free Water	scalar	*Visual	NEG	---	---





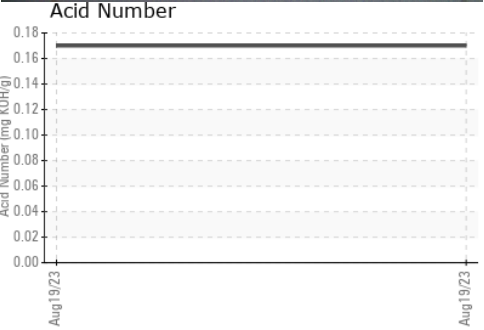
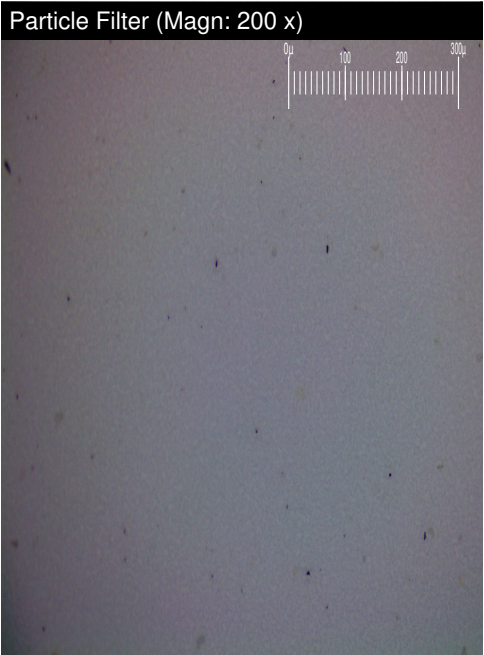
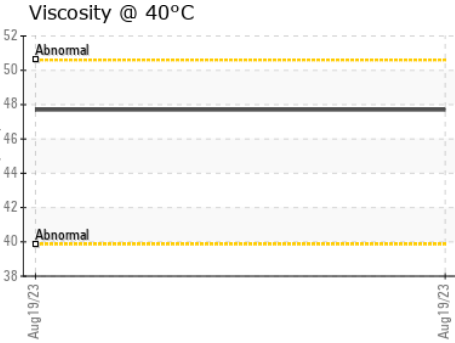
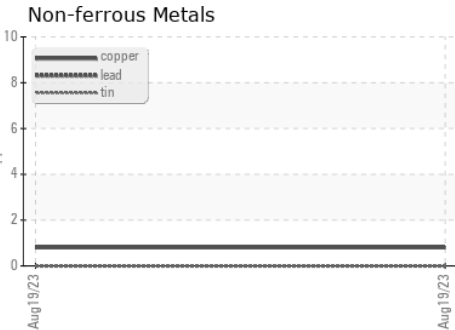
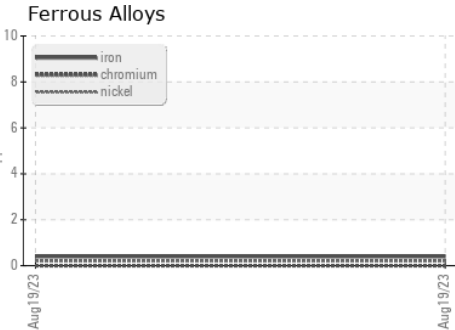
OIL ANALYSIS REPORT



FLUID PROPERTIES	method	limit/base	current	history1	history2
Visc @ 40°C	cSt	ASTM D445	47.7	---	---

SAMPLE IMAGES	method	limit/base	current	history1	history2
Color				no image	no image
Bottom				no image	no image
PrtFilter				no image	no image

GRAPHS



Certificate L2367

Laboratory : WearCheck USA - 501 Madison Ave., Cary, NC 27513
Sample No. : PH05928125 **Received** : 18 Aug 2023
Lab Number : 05928125 **Diagnosed** : 22 Aug 2023
Unique Number : 10608072 **Diagnostician** : Jonathan Hester
Test Package : PLANT (Additional Tests: PrtFilter)

TRELLEBORG HEALTHCARE AND MEDICAL
 3077 ROLLIE GATE DR
 PASO POBLES, CA
 US 93446
 Contact: DARRYL DRUM
 DARRYL.DRUM@TRELLEBORG.COM
 T: (805)239-4284
 F:

To discuss this sample report, contact Customer Service at 1-800-237-1369.

* - Denotes test methods that are outside of the ISO 17025 scope of accreditation.

Statements of conformity to specifications are based on the simple acceptance decision rule (JCGM 106:2012)