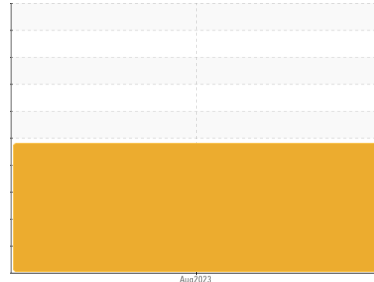




PROBLEM SUMMARY

Area
[185212-N2STV4W]
 Machine Id
E-3
 Component
Hydraulic System
 Fluid
NOT GIVEN (--- GAL)

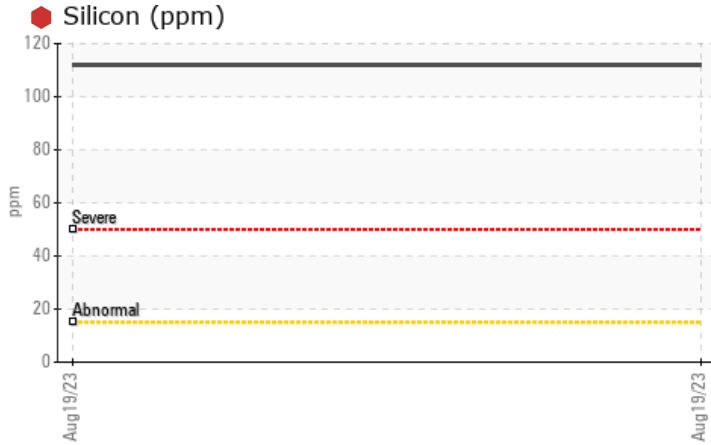
Sample Rating Trend



DIRT



COMPONENT CONDITION SUMMARY



RECOMMENDATION

No corrective action is recommended at this time. We recommend an early resample to monitor this condition.

PROBLEMATIC TEST RESULTS

Sample Status				SEVERE	---	---
Silicon	ppm	ASTM D5185m	>15	112	---	---
PrtFilter					no image	no image

Customer Id: TREPAS
 Sample No.: PH05928127
 Lab Number: 05928127
 Test Package: PLANT



To manage this report scan the QR code

To discuss the diagnosis or test data:
 Jonathan Hester +1 919-379-4092 x4092
jhester@wearcheckusa.com

To change component or sample information:
 Customer Service +1 1-800-237-1369
customerservice@wearcheck.com

RECOMMENDED ACTIONS

Action	Status	Date	Done By	Description
Resample	---	---	?	We recommend an early resample to monitor this condition.

HISTORICAL DIAGNOSIS



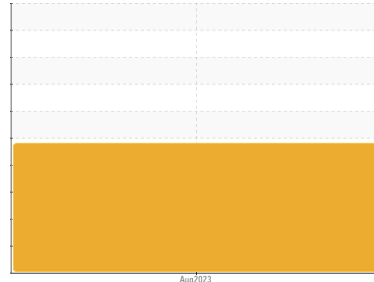
OIL ANALYSIS REPORT

Sample Rating Trend

DIRT



Area
[185212-N2STV4W]
 Machine Id
E-3
 Component
Hydraulic System
 Fluid
NOT GIVEN (--- GAL)



DIAGNOSIS

Recommendation

No corrective action is recommended at this time. We recommend an early resample to monitor this condition.

Wear

All component wear rates are normal.

Contamination

Elemental level of silicon (Si) above normal. The amount and size of particulates present in the system are acceptable.

Fluid Condition

The AN level is acceptable for this fluid. The condition of the oil is suitable for further service.

SAMPLE INFORMATION

	method	limit/base	current	history1	history2
Sample Number	Client Info		PH05928127	---	---
Sample Date	Client Info		19 Aug 2023	---	---
Machine Age	hrs	Client Info	0	---	---
Oil Age	hrs	Client Info	0	---	---
Oil Changed	Client Info		N/A	---	---
Sample Status			SEVERE	---	---

WEAR METALS

	method	limit/base	current	history1	history2
Iron	ppm	ASTM D5185m >20	0	---	---
Chromium	ppm	ASTM D5185m >20	0	---	---
Nickel	ppm	ASTM D5185m >20	0	---	---
Titanium	ppm	ASTM D5185m	0	---	---
Silver	ppm	ASTM D5185m	<1	---	---
Aluminum	ppm	ASTM D5185m >20	0	---	---
Lead	ppm	ASTM D5185m >20	0	---	---
Copper	ppm	ASTM D5185m >20	<1	---	---
Tin	ppm	ASTM D5185m >20	0	---	---
Vanadium	ppm	ASTM D5185m	0	---	---
Cadmium	ppm	ASTM D5185m	0	---	---

ADDITIVES

	method	limit/base	current	history1	history2
Boron	ppm	ASTM D5185m	0	---	---
Barium	ppm	ASTM D5185m	0	---	---
Molybdenum	ppm	ASTM D5185m	0	---	---
Manganese	ppm	ASTM D5185m	0	---	---
Magnesium	ppm	ASTM D5185m	0	---	---
Calcium	ppm	ASTM D5185m	<1	---	---
Phosphorus	ppm	ASTM D5185m	2	---	---
Zinc	ppm	ASTM D5185m	<1	---	---
Sulfur	ppm	ASTM D5185m	3819	---	---

CONTAMINANTS

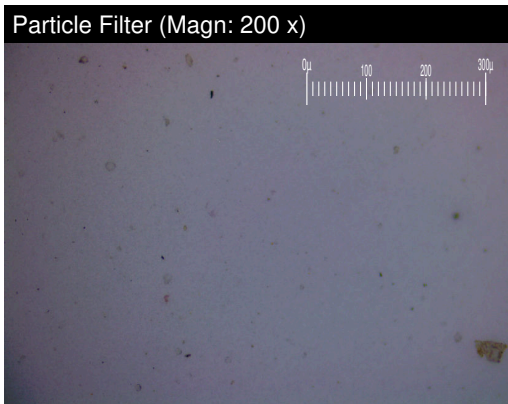
	method	limit/base	current	history1	history2
Silicon	ppm	ASTM D5185m >15	112	---	---
Sodium	ppm	ASTM D5185m	0	---	---
Potassium	ppm	ASTM D5185m >20	2	---	---

FLUID CLEANLINESS

	method	limit/base	current	history1	history2
Particles >4µm	ASTM D7647	>10000	6568	---	---
Particles >6µm	ASTM D7647	>2500	2266	---	---
Particles >14µm	ASTM D7647	>320	197	---	---
Particles >21µm	ASTM D7647	>80	44	---	---
Particles >38µm	ASTM D7647	>20	1	---	---
Particles >71µm	ASTM D7647	>4	0	---	---
Oil Cleanliness	ISO 4406 (c)	>20/18/15	20/18/15	---	---

FLUID DEGRADATION

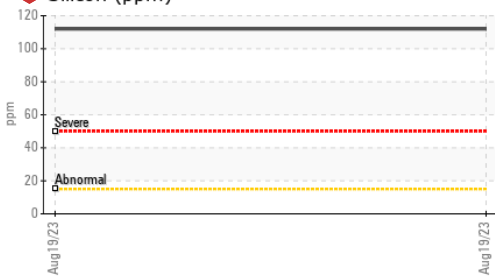
	method	limit/base	current	history1	history2
Acid Number (AN)	mg KOH/g	ASTM D8045	0.09	---	---





OIL ANALYSIS REPORT

Silicon (ppm)



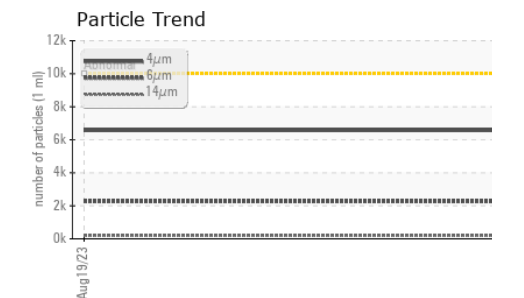
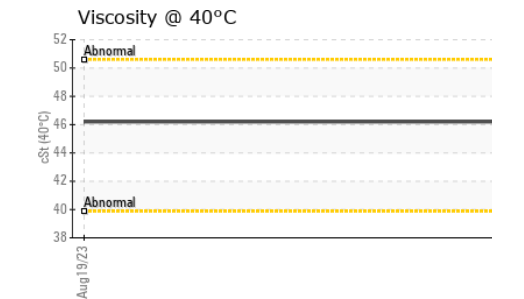
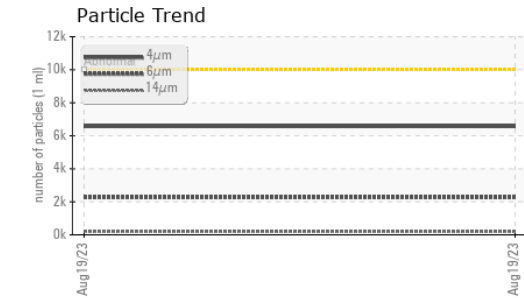
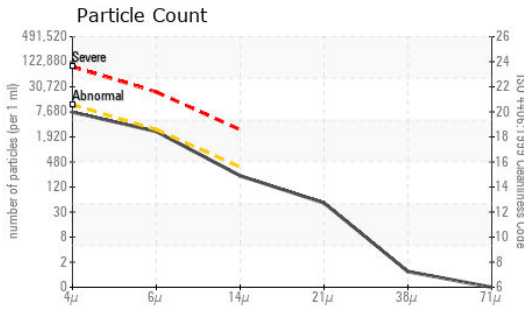
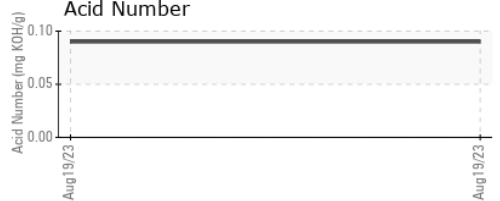
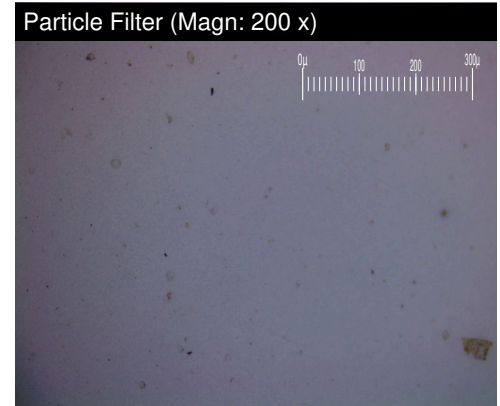
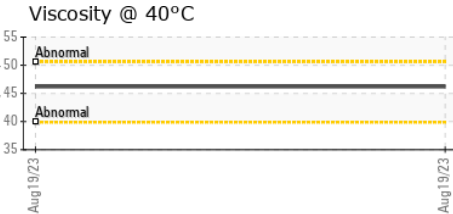
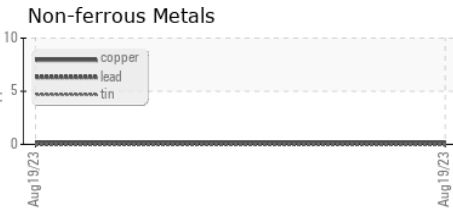
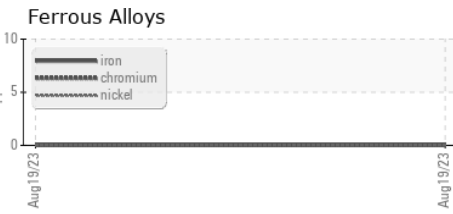
VISUAL	method	limit/base	current	history1	history2
White Metal	scalar	*Visual	NONE	NONE	---
Yellow Metal	scalar	*Visual	NONE	NONE	---
Precipitate	scalar	*Visual	NONE	NONE	---
Silt	scalar	*Visual	NONE	NONE	---
Debris	scalar	*Visual	NONE	NONE	---
Sand/Dirt	scalar	*Visual	NONE	NONE	---
Appearance	scalar	*Visual	NORML	NORML	---
Odor	scalar	*Visual	NORML	NORML	---
Emulsified Water	scalar	*Visual	>0.05	NEG	---
Free Water	scalar	*Visual		NEG	---

FLUID PROPERTIES	method	limit/base	current	history1	history2
Visc @ 40°C	cSt	ASTM D445	46.2	---	---

SAMPLE IMAGES	method	limit/base	current	history1	history2
---------------	--------	------------	---------	----------	----------

Color				no image	no image
Bottom				no image	no image
PrtFilter				no image	no image

GRAPHS



Laboratory : WearCheck USA - 501 Madison Ave., Cary, NC 27513
Sample No. : PH05928127 **Received** : 18 Aug 2023
Lab Number : 05928127 **Diagnosed** : 22 Aug 2023
Unique Number : 10608074 **Diagnostician** : Jonathan Hester
Test Package : PLANT (Additional Tests: PrtFilter)

TRELLEBORG HEALTHCARE AND MEDICAL
 3077 ROLLIE GATE DR
 PASO POBLES, CA
 US 93446
 Contact: DARRYL DRUM
 DARRYL.DRUM@TRELLEBORG.COM
 T: (805)239-4284
 F:

To discuss this sample report, contact Customer Service at 1-800-237-1369.

* - Denotes test methods that are outside of the ISO 17025 scope of accreditation.

Statements of conformity to specifications are based on the simple acceptance decision rule (JCGM 106:2012)