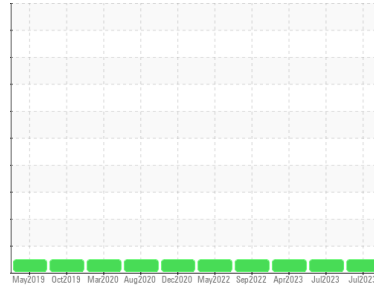




# OIL ANALYSIS REPORT

Sample Rating Trend

**NORMAL**



Area  
**ENGINE ROOM**  
 Machine Id  
**FRICK ROTARY SCREW C05-4 (S/N 10241D85009750)**  
 Component  
**Refrigeration Compressor**  
 Fluid  
**FRICK COMPRESSOR OIL #11 (--- PNT)**

## DIAGNOSIS

### Recommendation

Resample at the next service interval to monitor.

### Wear

All component wear rates are normal.

### Contamination

There is no indication of any contamination in the oil. The amount and size of particulates present in the system are acceptable.

### Fluid Condition

The AN level is acceptable for this fluid. The condition of the oil is suitable for further service.

SAMPLE INFORMATION		method	limit/base	current	history1	history2
Sample Number	Client Info			<b>USP0000530</b>	USP0000505	USP245942
Sample Date	Client Info			<b>22 Jul 2023</b>	22 Jul 2023	12 Apr 2023
Machine Age	hrs	Client Info		<b>22563</b>	8997	8816
Oil Age	hrs	Client Info		<b>0</b>	0	0
Oil Changed	Client Info			<b>N/A</b>	N/A	N/A
Sample Status				<b>NORMAL</b>	NORMAL	NORMAL

WEAR METALS		method	limit/base	current	history1	history2
Iron	ppm	ASTM D5185m	>8	<b>&lt;1</b>	<1	<1
Chromium	ppm	ASTM D5185m	>2	<b>0</b>	0	0
Nickel	ppm	ASTM D5185m		<b>0</b>	0	0
Titanium	ppm	ASTM D5185m		<b>&lt;1</b>	<1	0
Silver	ppm	ASTM D5185m	>2	<b>0</b>	0	0
Aluminum	ppm	ASTM D5185m	>3	<b>0</b>	0	0
Lead	ppm	ASTM D5185m	>2	<b>0</b>	0	0
Copper	ppm	ASTM D5185m	>8	<b>0</b>	<1	0
Tin	ppm	ASTM D5185m	>4	<b>0</b>	0	0
Vanadium	ppm	ASTM D5185m		<b>&lt;1</b>	<1	0
Cadmium	ppm	ASTM D5185m		<b>0</b>	0	0

ADDITIVES		method	limit/base	current	history1	history2
Boron	ppm	ASTM D5185m		<b>0</b>	0	0
Barium	ppm	ASTM D5185m		<b>0</b>	0	0
Molybdenum	ppm	ASTM D5185m		<b>0</b>	0	0
Manganese	ppm	ASTM D5185m		<b>0</b>	0	0
Magnesium	ppm	ASTM D5185m		<b>&lt;1</b>	<1	0
Calcium	ppm	ASTM D5185m		<b>0</b>	0	0
Phosphorus	ppm	ASTM D5185m		<b>0</b>	0	0
Zinc	ppm	ASTM D5185m		<b>0</b>	0	0
Sulfur	ppm	ASTM D5185m		<b>0</b>	14	0

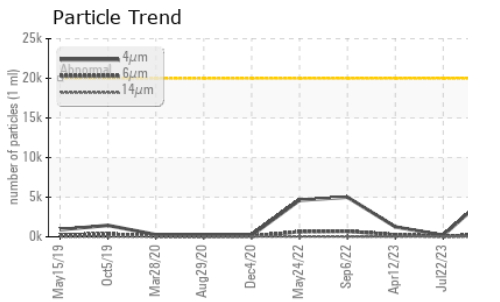
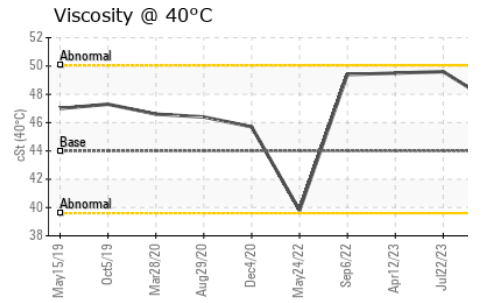
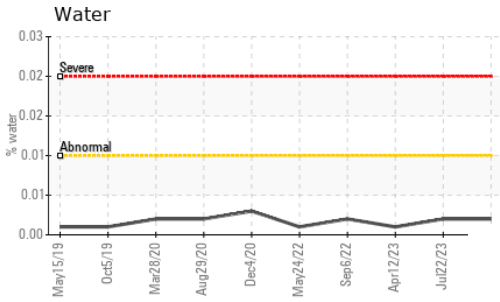
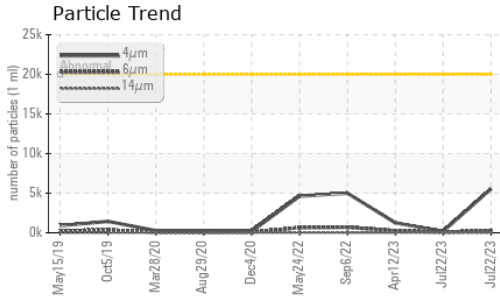
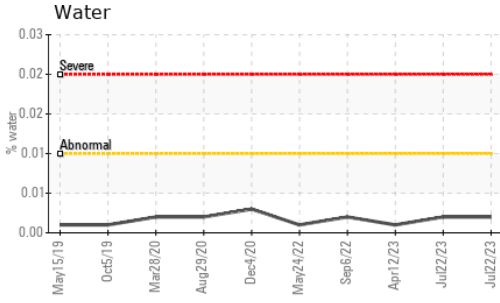
CONTAMINANTS		method	limit/base	current	history1	history2
Silicon	ppm	ASTM D5185m	>15	<b>&lt;1</b>	0	0
Sodium	ppm	ASTM D5185m		<b>&lt;1</b>	<1	<1
Potassium	ppm	ASTM D5185m	>20	<b>0</b>	0	0
Water	%	ASTM D6304	>0.01	<b>0.002</b>	0.002	0.001
ppm Water	ppm	ASTM D6304	>100	<b>20.9</b>	21.5	0.8

FLUID CLEANLINESS		method	limit/base	current	history1	history2
Particles >4µm		ASTM D7647	>20000	<b>193</b>	5549	1257
Particles >6µm		ASTM D7647	>2500	<b>62</b>	295	255
Particles >14µm		ASTM D7647	>320	<b>12</b>	16	22
Particles >21µm		ASTM D7647	>80	<b>4</b>	7	8
Particles >38µm		ASTM D7647	>20	<b>1</b>	0	1
Particles >71µm		ASTM D7647	>4	<b>0</b>	0	0
Oil Cleanliness		ISO 4406 (c)	>21/18/15	<b>15/13/11</b>	20/15/11	17/15/12

FLUID DEGRADATION		method	limit/base	current	history1	history2
Acid Number (AN)	mg KOH/g	ASTM D974		<b>0.015</b>	0.014	0.015



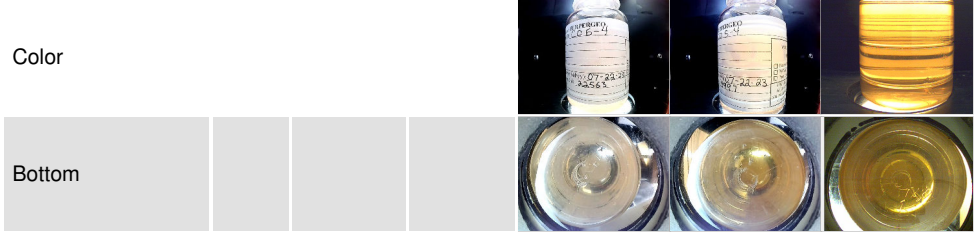
# OIL ANALYSIS REPORT



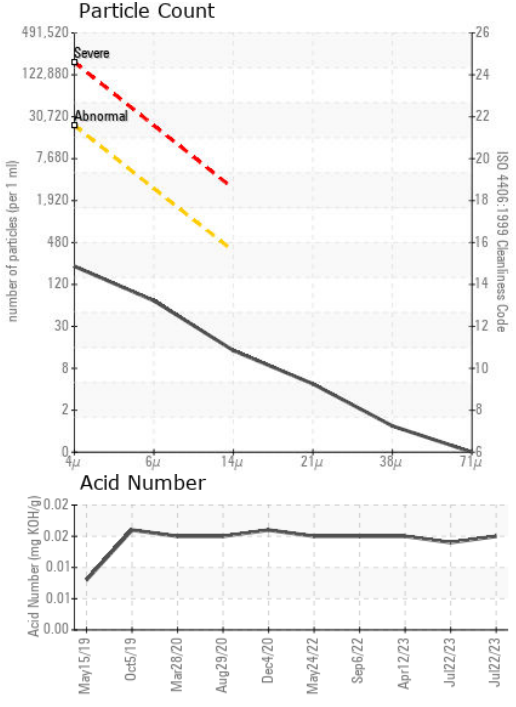
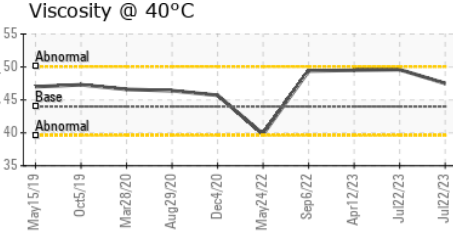
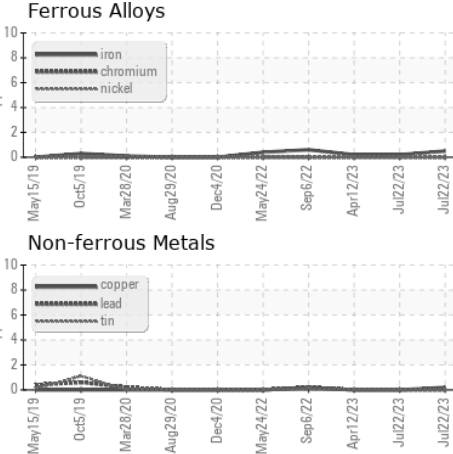
VISUAL	method	limit/base	current	history1	history2
White Metal	scalar	*Visual	NONE	NONE	NONE
Yellow Metal	scalar	*Visual	NONE	NONE	NONE
Precipitate	scalar	*Visual	NONE	NONE	NONE
Silt	scalar	*Visual	NONE	NONE	NONE
Debris	scalar	*Visual	NONE	NONE	NONE
Sand/Dirt	scalar	*Visual	NONE	NONE	NONE
Appearance	scalar	*Visual	NORML	NORML	NORML
Odor	scalar	*Visual	NORML	NORML	NORML
Emulsified Water	scalar	*Visual	>0.01	NEG	NEG
Free Water	scalar	*Visual		NEG	NEG

FLUID PROPERTIES	method	limit/base	current	history1	history2
Visc @ 40°C	cSt	ASTM D445	44.0	47.5	49.6

SAMPLE IMAGES	method	limit/base	current	history1	history2
---------------	--------	------------	---------	----------	----------



## GRAPHS



**Laboratory** : WearCheck USA - 501 Madison Ave., Cary, NC 27513  
**Sample No.** : USP0000530 **Received** : 21 Aug 2023  
**Lab Number** : 05929637 **Diagnosed** : 22 Aug 2023  
**Unique Number** : 10609584 **Diagnostician** : Doug Bogart  
**Test Package** : IND 2

**PERDUE FARMS INC**  
 250 GEORGIA HWY 247 SPUR  
 PERRY, GA  
 US 31069  
 Contact: JAMES EAST  
 james.east@perdue.com  
 T: (478)988-6048  
 F:

Certificate L2367  
 To discuss this sample report, contact Customer Service at 1-800-237-1369.  
 \* - Denotes test methods that are outside of the ISO 17025 scope of accreditation.  
 Statements of conformity to specifications are based on the simple acceptance decision rule (JCGM 106:2012)