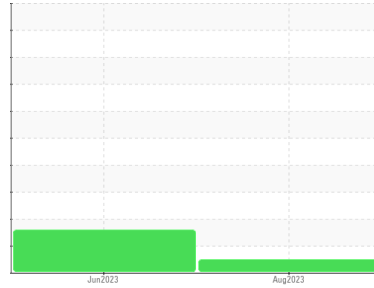




# OIL ANALYSIS REPORT

## Sample Rating Trend

**NORMAL**



Area  
**[184548-N2STV4W]**  
 Machine Id  
**TAIL 4 SUPPLY MANIFOLD**  
 Component  
**Forward Hydraulic System**  
 Fluid  
**RADCOLUBE FR282 (--- GAL)**

### DIAGNOSIS

#### Recommendation

Resample at the next service interval to monitor.

#### Wear

All component wear rates are normal.

#### Contamination

There is no indication of any contamination in the oil. The amount and size of particulates present in the system are acceptable.

#### Fluid Condition

The AN level is acceptable for this fluid. The condition of the oil is suitable for further service.

SAMPLE INFORMATION		method	limit/base	current	history1	history2
Sample Number	Client Info			<b>PH05931536</b>	PH05891694	---
Sample Date	Client Info			<b>11 Aug 2023</b>	23 Jun 2023	---
Machine Age	hrs	Client Info		<b>0</b>	0	---
Oil Age	hrs	Client Info		<b>0</b>	0	---
Oil Changed	Client Info			<b>N/A</b>	N/A	---
Sample Status				<b>NORMAL</b>	MARGINAL	---

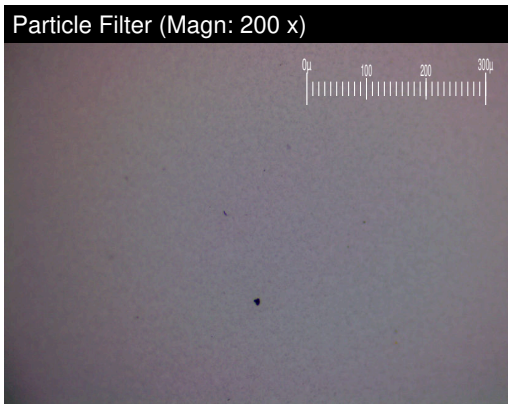
WEAR METALS		method	limit/base	current	history1	history2
Iron	ppm	ASTM D5185m	>20	<b>0</b>	<1	---
Chromium	ppm	ASTM D5185m	>20	<b>0</b>	0	---
Nickel	ppm	ASTM D5185m	>20	<b>0</b>	0	---
Titanium	ppm	ASTM D5185m		<b>0</b>	0	---
Silver	ppm	ASTM D5185m		<b>0</b>	0	---
Aluminum	ppm	ASTM D5185m	>20	<b>0</b>	3	---
Lead	ppm	ASTM D5185m	>20	<b>0</b>	3	---
Copper	ppm	ASTM D5185m	>20	<b>&lt;1</b>	3	---
Tin	ppm	ASTM D5185m	>20	<b>&lt;1</b>	1	---
Vanadium	ppm	ASTM D5185m		<b>0</b>	0	---
Cadmium	ppm	ASTM D5185m		<b>0</b>	0	---

ADDITIVES		method	limit/base	current	history1	history2
Boron	ppm	ASTM D5185m		<b>0</b>	0	---
Barium	ppm	ASTM D5185m		<b>0</b>	0	---
Molybdenum	ppm	ASTM D5185m		<b>0</b>	0	---
Manganese	ppm	ASTM D5185m		<b>&lt;1</b>	2	---
Magnesium	ppm	ASTM D5185m		<b>&lt;1</b>	0	---
Calcium	ppm	ASTM D5185m		<b>1</b>	<1	---
Phosphorus	ppm	ASTM D5185m		<b>32</b>	36	---
Zinc	ppm	ASTM D5185m		<b>0</b>	0	---
Sulfur	ppm	ASTM D5185m		<b>92</b>	107	---

CONTAMINANTS		method	limit/base	current	history1	history2
Silicon	ppm	ASTM D5185m	>15	<b>&lt;1</b>	2	---
Sodium	ppm	ASTM D5185m		<b>2</b>	<1	---
Potassium	ppm	ASTM D5185m	>20	<b>0</b>	3	---
Water	%	ASTM D6304	>0.05	<b>0.007</b>	▲ 0.023	---
ppm Water	ppm	ASTM D6304	>500	<b>77.6</b>	▲ 238.5	---

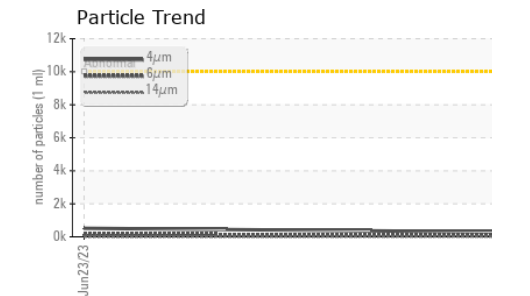
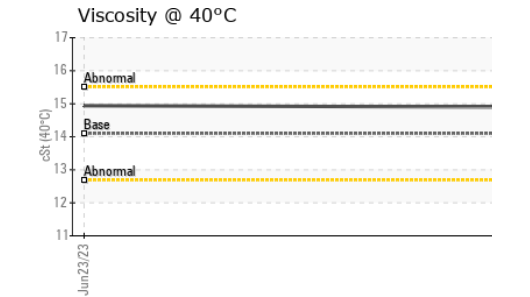
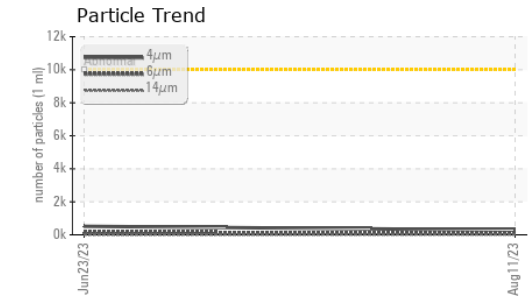
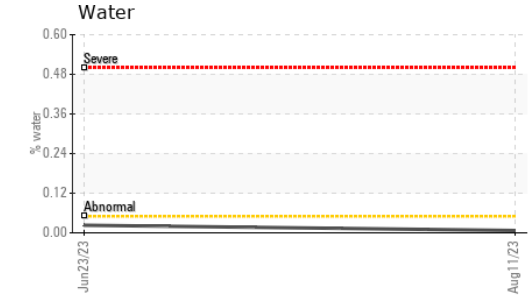
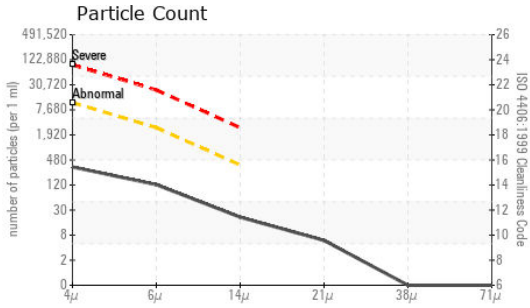
FLUID CLEANLINESS		method	limit/base	current	history1	history2
Particles >4µm		ASTM D7647	>10000	<b>287</b>	517	---
Particles >6µm		ASTM D7647	>2500	<b>108</b>	156	---
Particles >14µm		ASTM D7647	>320	<b>18</b>	7	---
Particles >21µm		ASTM D7647	>80	<b>5</b>	2	---
Particles >38µm		ASTM D7647	>20	<b>0</b>	0	---
Particles >71µm		ASTM D7647	>4	<b>0</b>	0	---
Oil Cleanliness		ISO 4406 (c)	>20/18/15	<b>15/14/11</b>	16/14/10	---

FLUID DEGRADATION		method	limit/base	current	history1	history2
Acid Number (AN)	mg KOH/g	ASTM D8045	0.09	<b>0.11</b>	0.14	---





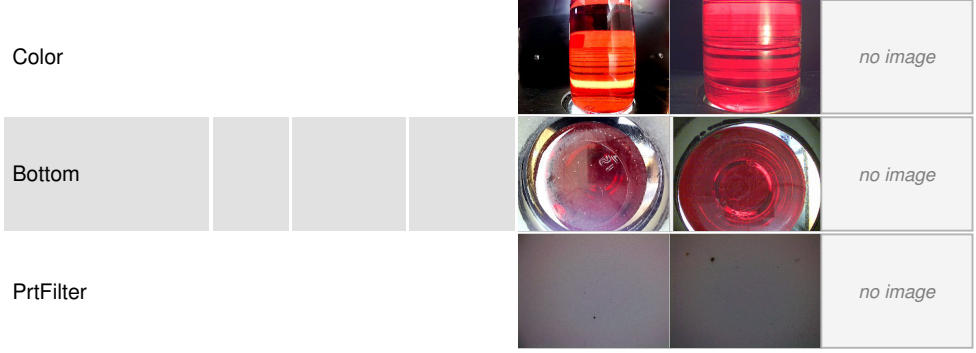
# OIL ANALYSIS REPORT



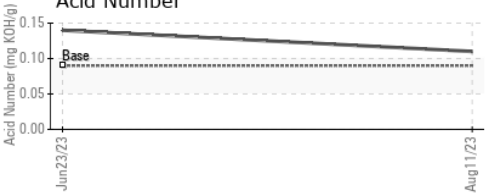
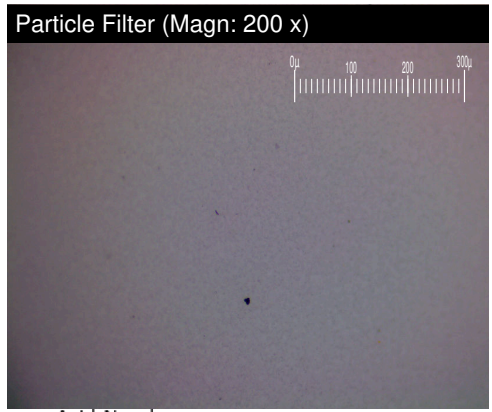
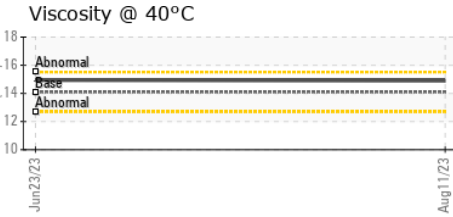
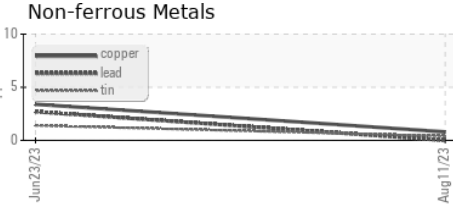
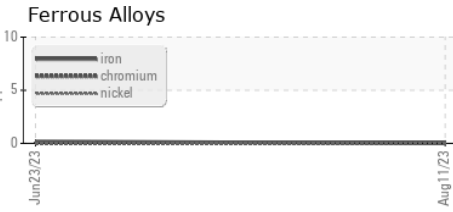
VISUAL	method	limit/base	current	history1	history2
White Metal	scalar	*Visual	NONE	NONE	---
Yellow Metal	scalar	*Visual	NONE	NONE	---
Precipitate	scalar	*Visual	NONE	NONE	---
Silt	scalar	*Visual	NONE	NONE	---
Debris	scalar	*Visual	NONE	NONE	---
Sand/Dirt	scalar	*Visual	NONE	NONE	---
Appearance	scalar	*Visual	NORML	NORML	---
Odor	scalar	*Visual	NORML	NORML	---
Emulsified Water	scalar	*Visual	>0.05	NEG	---
Free Water	scalar	*Visual		NEG	---

FLUID PROPERTIES	method	limit/base	current	history1	history2	
Visc @ 40°C	cSt	ASTM D445	14.1	<b>14.9</b>	14.94	---

SAMPLE IMAGES	method	limit/base	current	history1	history2
---------------	--------	------------	---------	----------	----------



## GRAPHS



**Laboratory** : WearCheck USA - 501 Madison Ave., Cary, NC 27513  
**Sample No.** : PH05931536 **Received** : 22 Aug 2023  
**Lab Number** : **05931536** **Diagnosed** : 24 Aug 2023  
**Unique Number** : 10616807 **Diagnostician** : Jonathan Hester  
**Test Package** : PLANT ( Additional Tests: KF, PrtFilter )

**BLUE ORIGIN**  
 35961 HWY 54  
 VAN HORN, TX  
 US 79855  
 Contact: MANUEL HERRERA  
 mherrera@blueorigin.com  
 T:  
 F:

Certificate L2367  
 To discuss this sample report, contact Customer Service at 1-800-237-1369.  
 \* - Denotes test methods that are outside of the ISO 17025 scope of accreditation.  
 Statements of conformity to specifications are based on the simple acceptance decision rule (JCGM 106:2012)