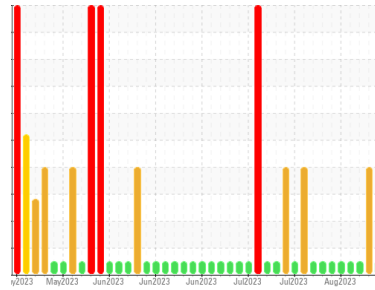




COOLANT REPORT

Sample Rating Trend



NORMAL



Area
WCLSNC
 Machine Id
QC COOL ELC NC 09012022
 Component
Coolant
 Fluid
CAT EXTENDED LIFE COOLANT (ELC) (--- GAL)

DIAGNOSIS

Recommendation

The fluid is suitable for further service.

Corrosion

All metal levels are normal indicating no corrosion in the cooling system.

Contaminants

There is no indication of any contamination in the coolant.

Coolant Condition

The glycol level is acceptable. The pH level of this fluid is within the acceptable limits.

SAMPLE INFORMATION

method	limit/base	current	history1	history2
Sample Number	Client Info	WC0843294	WC0843288	WC0843287
Sample Date	Client Info	23 Aug 2023	17 Aug 2023	16 Aug 2023
Machine Age	hrs	Client Info	0	0
Oil Age	hrs	Client Info	0	0
Oil Changed	Client Info	N/A	N/A	N/A
Sample Status		NORMAL	SEVERE	NORMAL

PHYSICAL TEST RESULTS

method	limit/base	current	history1	history2
Specific Gravity	*ASTM D1298	1.067	1.067	1.067
pH	Scale 0-14 ASTM D1287	8.20	8.16	8.19
Nitrites	ppm AP-053:2009	676	712	712
Reserve Alkalinity	Scale 0-20 *ASTM D1121	---	---	---
Percentage Glycol	% ASTM D3321	49.7	49.7	49.7
Freezing Point	°F ASTM D3321	-33	-33	-33
Total Dissolved Solids		334.0	299.0	332.5
Carboxylate		pass	fail	fail

CORROSION INHIBITORS

method	limit/base	current	history1	history2
Silicon	ppm ASTM D6130	0	2	2
Phosphorus	ppm ASTM D6130	0	0	0
Boron	ppm ASTM D6130	0	5	6
Molybdenum	ppm ASTM D6130	950	978	944

CORROSION

method	limit/base	current	history1	history2
Iron	ppm ASTM D6130	>2	<1	<1
Aluminum	ppm ASTM D6130	>2	0	0
Copper	ppm ASTM D6130	>2	<1	<1
Lead	ppm ASTM D6130	>2	<1	<1
Tin	ppm ASTM D6130	>2	<1	<1
Zinc	ppm ASTM D6130	>2	<1	<1

CONTAMINANTS

method	limit/base	current	history1	history2
Chlorine	ppm ASTM D6130		25	26

CARRIER SALTS

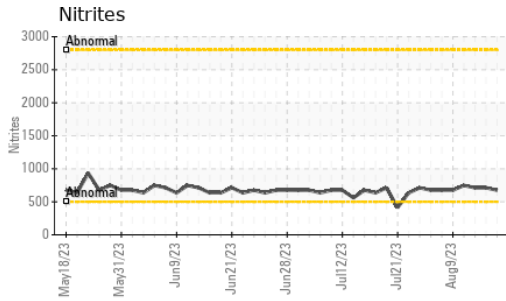
method	limit/base	current	history1	history2
Sodium	ppm ASTM D6130		5199	5159
Potassium	ppm ASTM D6130		0	0

SCALE POTENTIAL

method	limit/base	current	history1	history2
Calcium	ppm ASTM D6130	>5	<1	<1
Magnesium	ppm ASTM D6130	>6	0	0

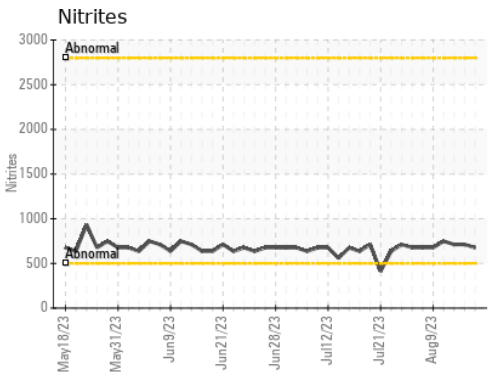
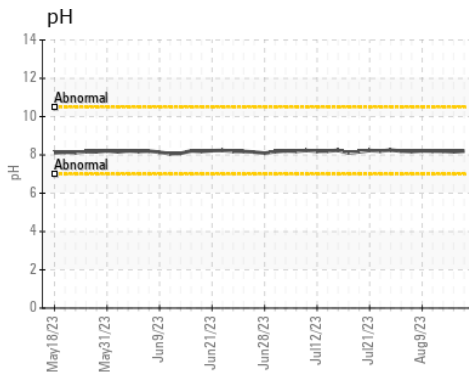
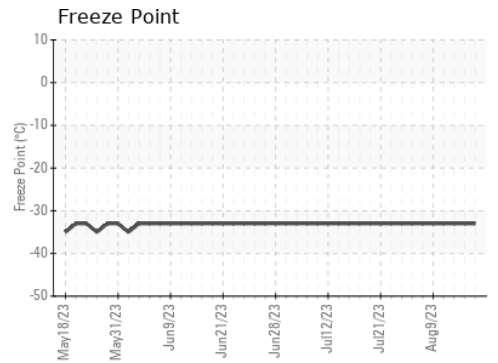
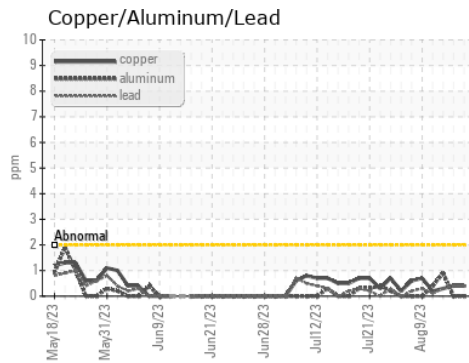
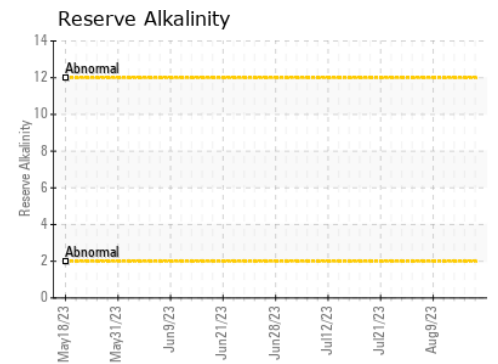
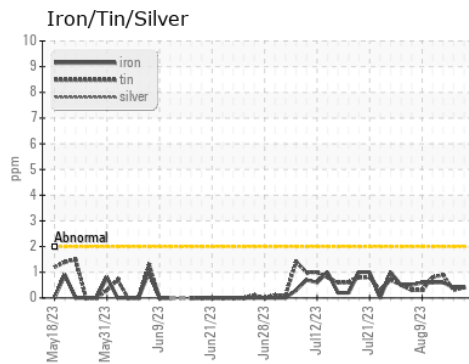


COOLANT REPORT



VISUAL	method	limit/base	current	history1	history2
Coolant Color	*Visual		Red	Red	Red
Coolant Appearance	*Visual	Clear	normal	normal	normal
Color					
Bottom					

GRAPHS



Certificate L2367

Laboratory : WearCheck USA - 501 Madison Ave., Cary, NC 27513
Sample No. : WC0843294 **Received** : 23 Aug 2023
Lab Number : 05932515 **Diagnosed** : 28 Aug 2023
Unique Number : 10617786 **Diagnostician** : Jonathan Hester
Test Package : COOL- (Additional Tests: COOL, ICP)

WEARCHECK LUBRICATION SERVICES QA ACCOUNT
 501 Madison Ave
 Cary, NC
 US 27513
 Contact: WCLS CARY NC

To discuss this sample report, contact Customer Service at 1-800-237-1369.

* - Denotes test methods that are outside of the ISO 17025 scope of accreditation.

Statements of conformity to specifications are based on the simple acceptance decision rule (JCGM 106:2012)

T: (919)379-4102

F: (919)379-4050