

OIL ANALYSIS REPORT

Sample Rating Trend

NORMAL



Machine Id
PRMMVD
 Component
Gearbox
 Fluid
NOT GIVEN (--- GAL)

DIAGNOSIS

Recommendation
 Resample at the next service interval to monitor.

Wear
 All component wear rates are normal.

Contamination
 There is no indication of any contamination in the oil. The amount and size of particulates present in the system are acceptable.

Fluid Condition
 The AN level is acceptable for this fluid. The condition of the oil is suitable for further service.

SAMPLE INFORMATION

	method	limit/base	current	history1	history2
Sample Number	Client Info		ST44647	---	---
Sample Date	Client Info		14 Aug 2023	---	---
Machine Age	hrs	Client Info	0	---	---
Oil Age	hrs	Client Info	0	---	---
Oil Changed	Client Info		N/A	---	---
Sample Status			NORMAL	---	---

WEAR METALS

	method	limit/base	current	history1	history2
Iron	ppm	ASTM D5185m >200	2	---	---
Chromium	ppm	ASTM D5185m >15	2	---	---
Nickel	ppm	ASTM D5185m >15	0	---	---
Titanium	ppm	ASTM D5185m	0	---	---
Silver	ppm	ASTM D5185m	0	---	---
Aluminum	ppm	ASTM D5185m >25	<1	---	---
Lead	ppm	ASTM D5185m >100	0	---	---
Copper	ppm	ASTM D5185m >200	1	---	---
Tin	ppm	ASTM D5185m >25	0	---	---
Vanadium	ppm	ASTM D5185m	<1	---	---
Cadmium	ppm	ASTM D5185m	0	---	---

ADDITIVES

	method	limit/base	current	history1	history2
Boron	ppm	ASTM D5185m	<1	---	---
Barium	ppm	ASTM D5185m	0	---	---
Molybdenum	ppm	ASTM D5185m	<1	---	---
Manganese	ppm	ASTM D5185m	<1	---	---
Magnesium	ppm	ASTM D5185m	5	---	---
Calcium	ppm	ASTM D5185m	66	---	---
Phosphorus	ppm	ASTM D5185m	311	---	---
Zinc	ppm	ASTM D5185m	378	---	---
Sulfur	ppm	ASTM D5185m	1926	---	---

CONTAMINANTS

	method	limit/base	current	history1	history2
Silicon	ppm	ASTM D5185m >50	2	---	---
Sodium	ppm	ASTM D5185m	<1	---	---
Potassium	ppm	ASTM D5185m >20	<1	---	---
Water	%	ASTM D6304 >0.2	0.005	---	---
ppm Water	ppm	ASTM D6304 >2000	56.3	---	---

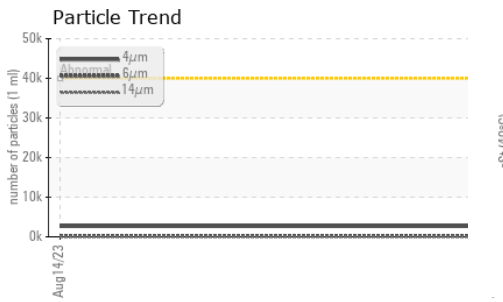
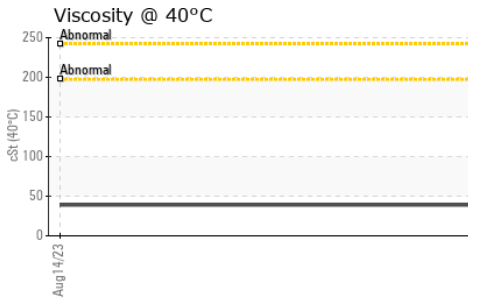
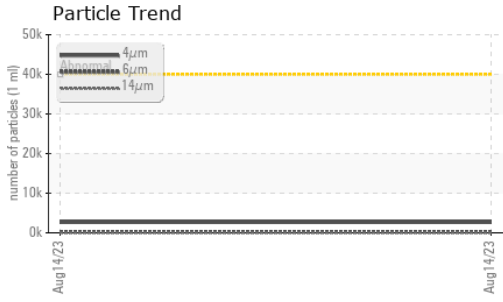
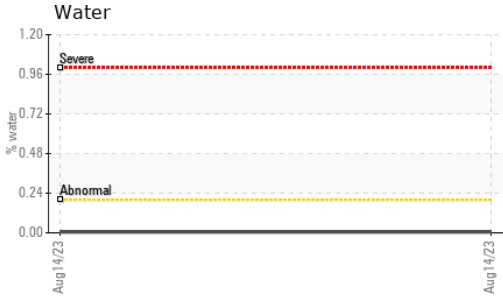
FLUID CLEANLINESS

	method	limit/base	current	history1	history2
Particles >4µm	ASTM D7647	>40000	2664	---	---
Particles >6µm	ASTM D7647	>5000	250	---	---
Particles >14µm	ASTM D7647	>640	20	---	---
Particles >21µm	ASTM D7647	>160	6	---	---
Particles >38µm	ASTM D7647	>40	0	---	---
Particles >71µm	ASTM D7647	>10	0	---	---
Oil Cleanliness	ISO 4406 (c)	>22/19/16	19/15/11	---	---

FLUID DEGRADATION

	method	limit/base	current	history1	history2
Acid Number (AN)	mg KOH/g	ASTM D8045	0.31	---	---

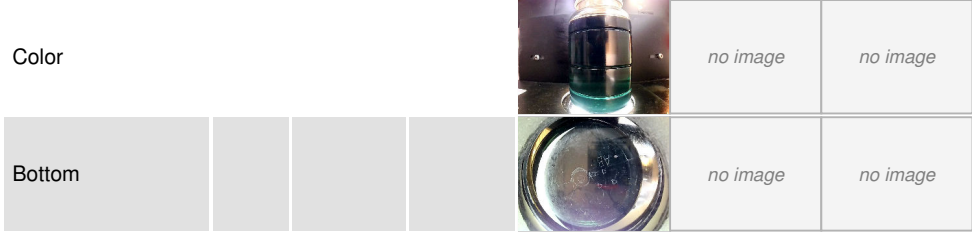
OIL ANALYSIS REPORT



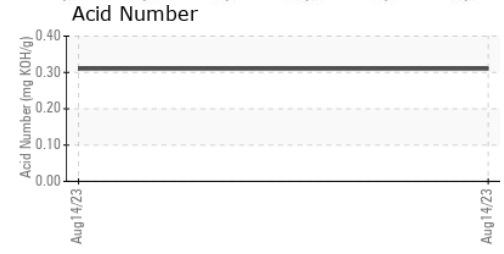
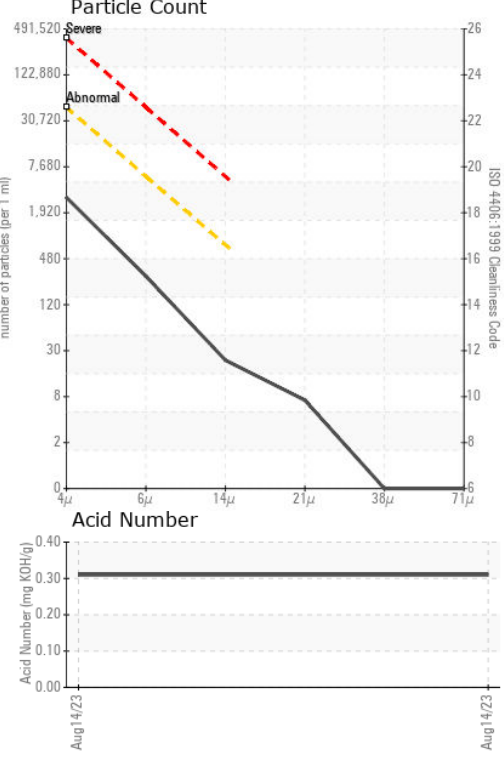
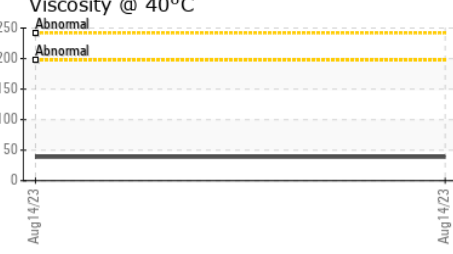
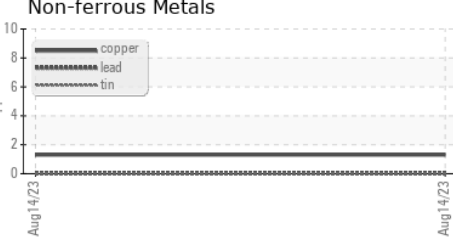
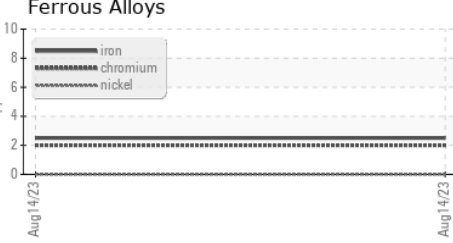
VISUAL	method	limit/base	current	history1	history2
White Metal	scalar	*Visual	NONE	NONE	---
Yellow Metal	scalar	*Visual	NONE	NONE	---
Precipitate	scalar	*Visual	NONE	NONE	---
Silt	scalar	*Visual	NONE	NONE	---
Debris	scalar	*Visual	NONE	NONE	---
Sand/Dirt	scalar	*Visual	NONE	NONE	---
Appearance	scalar	*Visual	NORML	NORML	---
Odor	scalar	*Visual	NORML	NORML	---
Emulsified Water	scalar	*Visual	>0.2	NEG	---
Free Water	scalar	*Visual		NEG	---

FLUID PROPERTIES	method	limit/base	current	history1	history2
Visc @ 40°C	cSt	ASTM D445	38.9	---	---

SAMPLE IMAGES	method	limit/base	current	history1	history2
---------------	--------	------------	---------	----------	----------



GRAPHS



Laboratory : WearCheck USA - 501 Madison Ave., Cary, NC 27513
Sample No. : ST44647 **Received** : 23 Aug 2023
Lab Number : 05932773 **Diagnosed** : 26 Aug 2023
Unique Number : 10618044 **Diagnostician** : Don Baldrige
Test Package : IND 2 (Additional Tests: KF, PrtCount)

KOBE WIELAND COPPER PRODUCTS
 3990 HWY. 311
 PINE HALL, NC
 US 27042
 Contact: NEAL SHINAULT
 NEAL.SHINAULT@WIELAND.COM
 T: (336)604-1498
 F:

Certificate L2367
 To discuss this sample report, contact Customer Service at 1-800-237-1369.
 * - Denotes test methods that are outside of the ISO 17025 scope of accreditation.
 Statements of conformity to specifications are based on the simple acceptance decision rule (JCGM 106:2012)