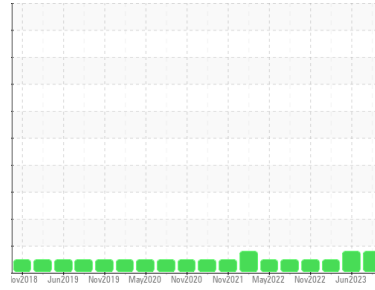




# PROBLEM SUMMARY

Area  
**MS-103**  
 Machine Id  
**B38374 - AIR COMPRESSOR #7 100 HP SCREW INGERSOLL-RAND (S/N FF1411U98049)**  
 Component  
**Compressor**  
 Fluid  
**INGERSOLL-RAND SSR ULTRA COOLANT (--- GAL)**

Sample Rating Trend



**SEDIMENT**



## COMPONENT CONDITION SUMMARY

No relevant graphs to display

## RECOMMENDATION

We recommend you service the filters on this component. Resample at the next service interval to monitor. We were unable to perform a particle count due to a high concentration of particles present in this sample.

## PROBLEMATIC TEST RESULTS

Sample Status				ABNORMAL	ABNORMAL	NORMAL
Silt	scalar	*Visual	NONE	▲ MODER	▲ MODER	NONE

Customer Id: HORAUS  
 Sample No.: WC0826167  
 Lab Number: 05934873  
 Test Package: IND 2



To manage this report scan the QR code

To discuss the diagnosis or test data:  
 Don Baldrige +1  
[don.b505@comcast.net](mailto:don.b505@comcast.net)

To change component or sample information:  
 Customer Service +1 1-800-237-1369  
[customerservice@wearcheck.com](mailto:customerservice@wearcheck.com)

## RECOMMENDED ACTIONS

Action	Status	Date	Done By	Description
Change Filter	---	---	?	We recommend you service the filters on this component.
Alert	---	---	?	We were unable to perform a particle count due to a high concentration of particles present in this sample.

## HISTORICAL DIAGNOSIS

### 06 Jun 2023 Diag: Don Baldrige

#### SEDIMENT



We recommend you service the filters on this component. Resample at the next service interval to monitor. We were unable to perform a particle count due to a high concentration of particles present in this sample. All component wear rates are normal. There is a moderate amount of visible silt present in the sample. The AN level is acceptable for this fluid. The condition of the oil is suitable for further service.

[view report](#)



### 19 Feb 2023 Diag: Don Baldrige

#### NORMAL



Resample at the next service interval to monitor. All component wear rates are normal. The amount and size of particulates present in the system are acceptable. There is no indication of any contamination in the oil. The AN level is acceptable for this fluid. The condition of the oil is suitable for further service.

[view report](#)



### 18 Nov 2022 Diag: Don Baldrige

#### NORMAL



Resample at the next service interval to monitor. All component wear rates are normal. There is no indication of any contamination in the oil. The amount and size of particulates present in the system are acceptable. The AN level is acceptable for this fluid. The condition of the oil is suitable for further service.

[view report](#)



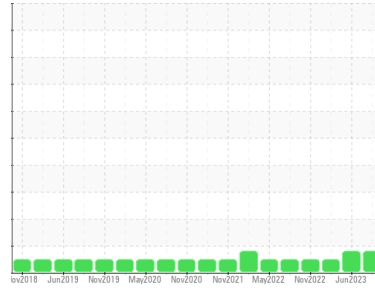


# OIL ANALYSIS REPORT

Sample Rating Trend

SEDIMENT

Area  
**MS-103**  
 Machine Id  
**B38374 - AIR COMPRESSOR #7 100 HP SCREW INGERSOLL-RAND (S/N FF1411U98049)**  
 Component  
**Compressor**  
 Fluid  
**INGERSOLL-RAND SSR ULTRA COOLANT (--- GAL)**



## DIAGNOSIS

### Recommendation

We recommend you service the filters on this component. Resample at the next service interval to monitor. We were unable to perform a particle count due to a high concentration of particles present in this sample.

### Wear

All component wear rates are normal.

### Contamination

There is a moderate amount of visible silt present in the sample.

### Fluid Condition

The AN level is acceptable for this fluid. The condition of the oil is suitable for further service.

## SAMPLE INFORMATION

	method	limit/base	current	history1	history2
Sample Number	Client Info		<b>WC0826167</b>	WC0799682	WC0765456
Sample Date	Client Info		<b>20 Aug 2023</b>	06 Jun 2023	19 Feb 2023
Machine Age	hrs	Client Info	<b>125202</b>	123747	122022
Oil Age	hrs	Client Info	<b>9000</b>	0	4846
Oil Changed	Client Info		<b>N/A</b>	N/A	Not Changd
Sample Status			<b>ABNORMAL</b>	ABNORMAL	NORMAL

## WEAR METALS

	method	limit/base	current	history1	history2
Iron	ppm	ASTM D5185m >50	<b>&lt;1</b>	<1	<1
Chromium	ppm	ASTM D5185m >10	<b>0</b>	0	<1
Nickel	ppm	ASTM D5185m	<b>&lt;1</b>	<1	<1
Titanium	ppm	ASTM D5185m	<b>0</b>	0	0
Silver	ppm	ASTM D5185m	<b>0</b>	0	0
Aluminum	ppm	ASTM D5185m >25	<b>0</b>	0	<1
Lead	ppm	ASTM D5185m >25	<b>0</b>	0	<1
Copper	ppm	ASTM D5185m >50	<b>2</b>	1	1
Tin	ppm	ASTM D5185m >15	<b>0</b>	0	0
Vanadium	ppm	ASTM D5185m	<b>0</b>	0	0
Cadmium	ppm	ASTM D5185m	<b>0</b>	0	0

## ADDITIVES

	method	limit/base	current	history1	history2
Boron	ppm	ASTM D5185m 0	<b>0</b>	0	0
Barium	ppm	ASTM D5185m 500	<b>811</b>	867	935
Molybdenum	ppm	ASTM D5185m 0	<b>0</b>	0	0
Manganese	ppm	ASTM D5185m	<b>0</b>	0	0
Magnesium	ppm	ASTM D5185m 0	<b>3</b>	2	<1
Calcium	ppm	ASTM D5185m 0	<b>4</b>	5	6
Phosphorus	ppm	ASTM D5185m 20	<b>3</b>	<1	11
Zinc	ppm	ASTM D5185m 0	<b>12</b>	11	15
Sulfur	ppm	ASTM D5185m 200	<b>442</b>	416	487

## CONTAMINANTS

	method	limit/base	current	history1	history2
Silicon	ppm	ASTM D5185m >25	<b>1</b>	<1	2
Sodium	ppm	ASTM D5185m	<b>32</b>	25	35
Potassium	ppm	ASTM D5185m >20	<b>4</b>	4	3

## FLUID CLEANLINESS

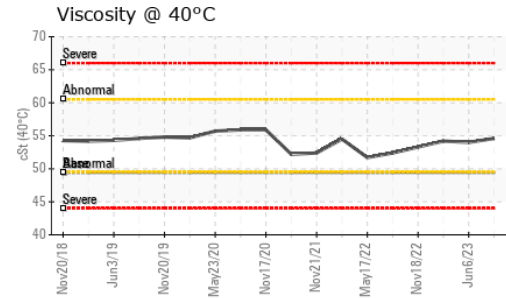
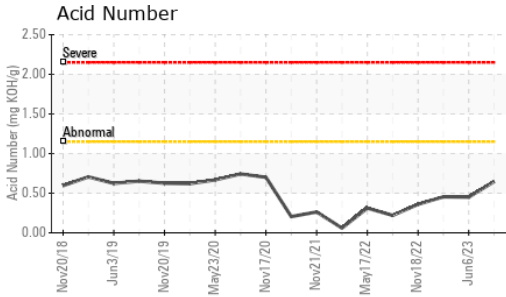
	method	limit/base	current	history1	history2
Particles >4µm	ASTM D7647	>10000	<b>---</b>	---	615
Particles >6µm	ASTM D7647	>2500	<b>---</b>	---	189
Particles >14µm	ASTM D7647	>320	<b>---</b>	---	22
Particles >21µm	ASTM D7647	>80	<b>---</b>	---	5
Particles >38µm	ASTM D7647	>20	<b>---</b>	---	1
Particles >71µm	ASTM D7647	>4	<b>---</b>	---	0
Oil Cleanliness	ISO 4406 (c)	>20/18/15	<b>---</b>	---	16/15/12

## FLUID DEGRADATION

	method	limit/base	current	history1	history2
Acid Number (AN)	mg KOH/g	ASTM D8045	<b>0.647</b>	0.45	0.454



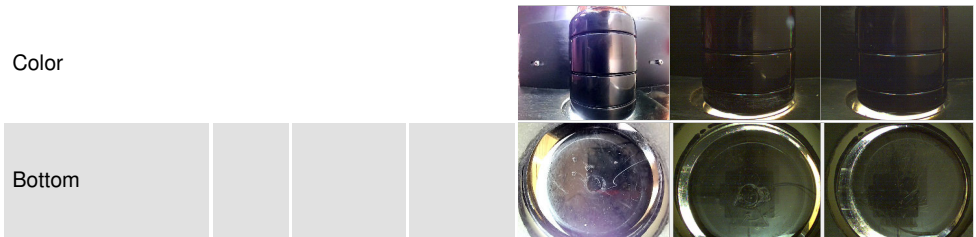
# OIL ANALYSIS REPORT



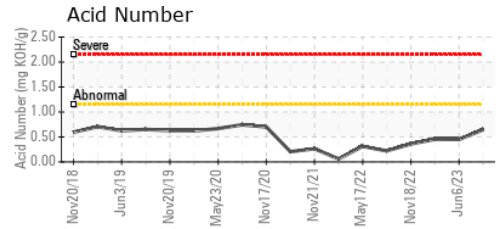
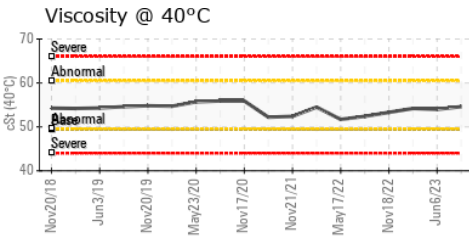
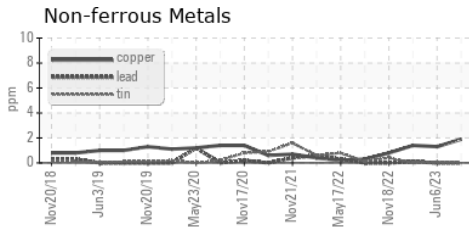
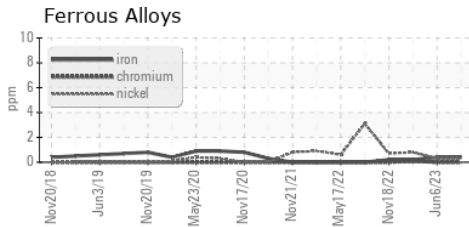
VISUAL	method	limit/base	current	history1	history2
White Metal	scalar	*Visual	NONE	NONE	NONE
Yellow Metal	scalar	*Visual	NONE	NONE	NONE
Precipitate	scalar	*Visual	NONE	NONE	NONE
Silt	scalar	*Visual	NONE	▲ MODER	▲ MODER
Debris	scalar	*Visual	NONE	NONE	NONE
Sand/Dirt	scalar	*Visual	NONE	NONE	NONE
Appearance	scalar	*Visual	NORML	NORML	NORML
Odor	scalar	*Visual	NORML	NORML	NORML
Emulsified Water	scalar	*Visual	>0.1	NEG	NEG
Free Water	scalar	*Visual		NEG	NEG

FLUID PROPERTIES	method	limit/base	current	history1	history2	
Visc @ 40°C	cSt	ASTM D445	49.4	<b>54.6</b>	54.0	54.2

SAMPLE IMAGES	method	limit/base	current	history1	history2
---------------	--------	------------	---------	----------	----------



## GRAPHS



Certificate L2367

**Laboratory** : WearCheck USA - 501 Madison Ave., Cary, NC 27513  
**Sample No.** : WC0826167 **Received** : 25 Aug 2023  
**Lab Number** : 05934873 **Diagnosed** : 29 Aug 2023  
**Unique Number** : 10620144 **Diagnostician** : Don Baldrige  
**Test Package** : IND 2 ( Additional Tests: PrtCount )

**HORMEL FOODS - AUSTIN**  
 1101 NORTH MAIN ST  
 AUSTIN, MN  
 US 55912  
 Contact: RYAN LOWE  
 rslowe@hormel.com  
 T: (507)437-5674  
 F: (507)437-9805

To discuss this sample report, contact Customer Service at 1-800-237-1369.

\* - Denotes test methods that are outside of the ISO 17025 scope of accreditation.

Statements of conformity to specifications are based on the simple acceptance decision rule (JCGM 106:2012)