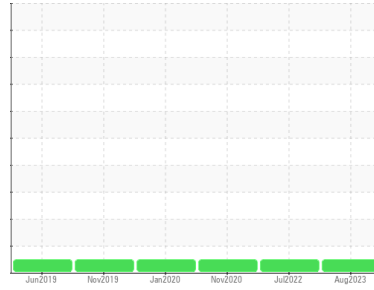


Area
PALEXTRA 44
Machine Id
PALATEK 1706190002 - LCAS
Component
Compressor



DIAGNOSIS

Recommendation

The filter change at the time of sampling has been noted. Resample at the next service interval to monitor.

Wear

All component wear rates are normal.

Contamination

Moderate concentration of visible dirt/debris present in the oil.

Fluid Condition

The AN level is acceptable for this fluid. The condition of the oil is suitable for further service.

SAMPLE INFORMATION method limit/base current history1 history2

Sample Number	Client Info	UCS05934923	UCS05703787	UCS05147097
Sample Date	Client Info	11 Aug 2023	29 Jul 2022	20 Nov 2020
Machine Age	hrs	24710	38179	23395
Oil Age	hrs	0	7200	7100
Oil Changed	Client Info	Not Changed	Changed	Changed
Sample Status		NORMAL	NORMAL	NORMAL

WEAR METALS method limit/base current history1 history2

Iron	ppm	ASTM D5185m	>50	<1	<1	<1
Chromium	ppm	ASTM D5185m	>10	0	0	0
Nickel	ppm	ASTM D5185m		0	0	0
Titanium	ppm	ASTM D5185m		0	0	0
Silver	ppm	ASTM D5185m		0	0	0
Aluminum	ppm	ASTM D5185m	>25	0	0	0
Lead	ppm	ASTM D5185m	>25	<1	0	0
Copper	ppm	ASTM D5185m	>50	2	<1	<1
Tin	ppm	ASTM D5185m	>15	0	<1	0
Antimony	ppm	ASTM D5185m		---	---	0
Vanadium	ppm	ASTM D5185m		0	0	0
Cadmium	ppm	ASTM D5185m		0	0	0

ADDITIVES method limit/base current history1 history2

Boron	ppm	ASTM D5185m	0	0	0	0
Barium	ppm	ASTM D5185m	0.3	6	0	0
Molybdenum	ppm	ASTM D5185m	0	0	0	0
Manganese	ppm	ASTM D5185m	0.3	0	0	0
Magnesium	ppm	ASTM D5185m	0.4	0	0	<1
Calcium	ppm	ASTM D5185m	0	0	0	0
Phosphorus	ppm	ASTM D5185m	689	607	554	547
Zinc	ppm	ASTM D5185m	0	<1	0	0
Sulfur	ppm	ASTM D5185m	1237	403	408	242

CONTAMINANTS method limit/base current history1 history2

Silicon	ppm	ASTM D5185m	>25	5	4	0
Sodium	ppm	ASTM D5185m		0	0	<1
Potassium	ppm	ASTM D5185m	>20	<1	0	0

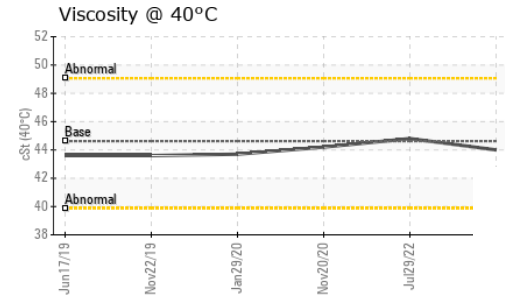
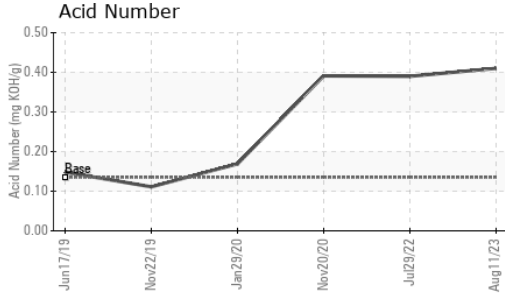
FLUID DEGRADATION method limit/base current history1 history2

Acid Number (AN)	mg KOH/g	ASTM D8045	0.135	0.41	0.39	0.391
------------------	----------	------------	-------	-------------	------	-------

VISUAL method limit/base current history1 history2

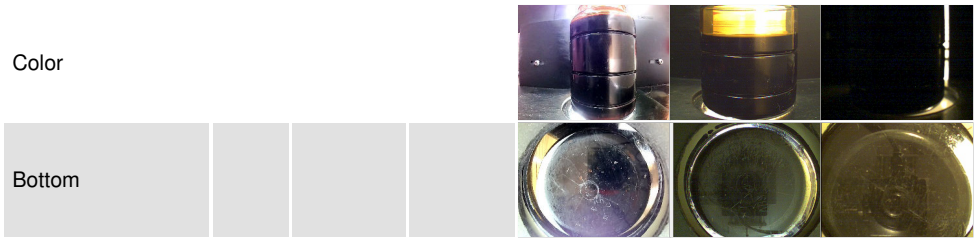
White Metal	scalar	*Visual	NONE	NONE	NONE	NONE
Yellow Metal	scalar	*Visual	NONE	NONE	NONE	NONE
Precipitate	scalar	*Visual	NONE	NONE	NONE	NONE
Silt	scalar	*Visual	NONE	NONE	NONE	NONE
Debris	scalar	*Visual	NONE	MODER	NONE	NONE
Sand/Dirt	scalar	*Visual	NONE	NONE	NONE	NONE
Appearance	scalar	*Visual	NORML	NORML	NORML	NORML
Odor	scalar	*Visual	NORML	NORML	NORML	NORML
Emulsified Water	scalar	*Visual	>0.1	NEG	NEG	NEG
Free Water	scalar	*Visual		NEG	NEG	NEG

OIL ANALYSIS REPORT

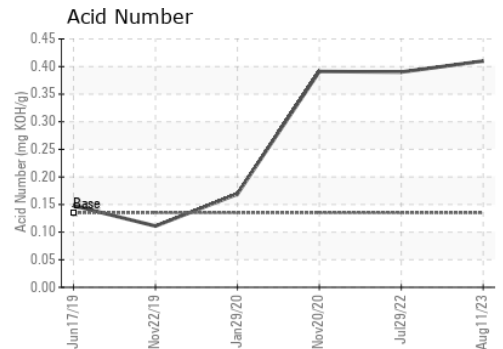
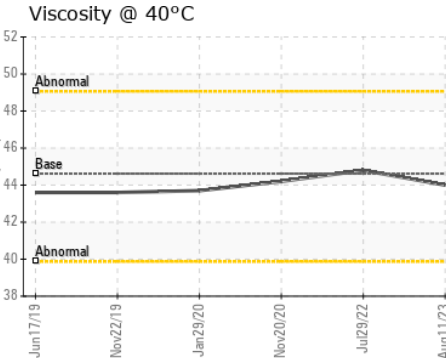
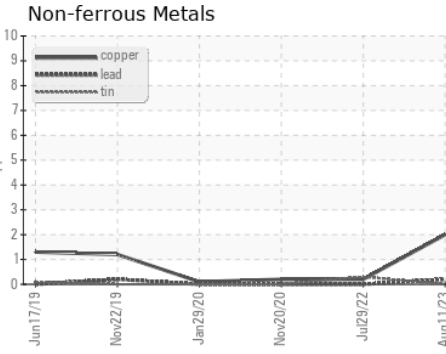
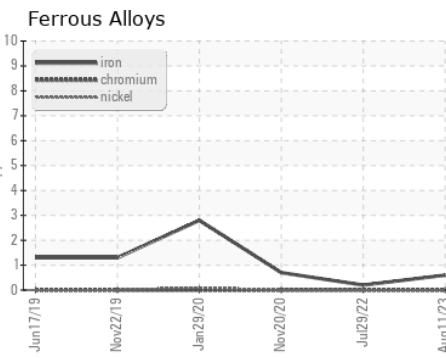


FLUID PROPERTIES	method	limit/base	current	history1	history2
Visc @ 40°C	cSt	ASTM D445	44.62	44.8	44.2

SAMPLE IMAGES	method	limit/base	current	history1	history2
---------------	--------	------------	---------	----------	----------



GRAPHS



Certificate L2367

Laboratory : WearCheck USA - 501 Madison Ave., Cary, NC 27513
Sample No. : UCS05934923 **Received** : 25 Aug 2023
Lab Number : 05934923 **Diagnosed** : 28 Aug 2023
Unique Number : 10620194 **Diagnostician** : Don Baldrige
Test Package : IND 2

CH REED INC - CLEVELAND

STRONGSVILLE, OH
 US 44149
 Contact: BOB ZUK
 bobzuk@chreed.com

To discuss this sample report, contact Customer Service at 1-800-237-1369.

* - Denotes test methods that are outside of the ISO 17025 scope of accreditation.

Statements of conformity to specifications are based on the simple acceptance decision rule (JCGM 106:2012)

T:
F: