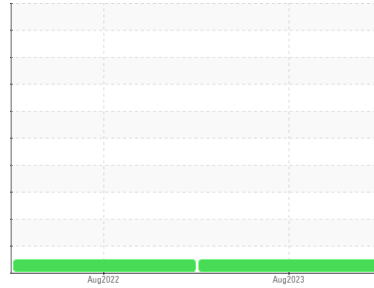


Area  
**[X47408]**  
 Machine Id  
**TADANO GR350XL-3 562318**  
 Component  
**Diesel Fuel**  
 Fluid  
**NOT GIVEN (--- GAL)**



**DIAGNOSIS**

**Recommendation**

This is a baseline read-out on the submitted sample.

**Corrosion**

All metal levels are normal indicating no corrosion in the system.

**Contaminants**

The water content is negligible. There is no indication of any contamination in the fuel.

**Fuel Condition**

The condition of the fuel is acceptable for the time in service.

SAMPLE INFORMATION		method	limit/base	current	history1	history2
Sample Number	Client Info			<b>VCP415868</b>	VCP379167	---
Sample Date	Client Info			<b>21 Aug 2023</b>	02 Aug 2022	---
Machine Age	hrs	Client Info		<b>1475</b>	427	---
Sample Status				<b>NORMAL</b>	NORMAL	---

PHYSICAL PROPERTIES		method	limit/base	current	history1	history2
Visc @ 40°C	cSt	ASTM D445		<b>2.2</b>	2.59	---

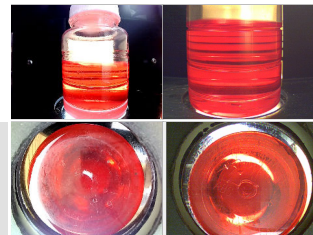
SULFUR CONTENT		method	limit/base	current	history1	history2
Sulfur	ppm	ASTM D5185m		<b>13</b>	0	---

CONTAMINANTS		method	limit/base	current	history1	history2
Silicon	ppm	ASTM D5185m	<1.0	<b>&lt;1</b>	0	---
Sodium	ppm	ASTM D5185m	<0.1	<b>&lt;1</b>	0	---
Potassium	ppm	ASTM D5185m	<0.1	<b>1</b>	<1	---
Water	%	ASTM D6304	<0.05	<b>0.004</b>	0.004	---
ppm Water	ppm	ASTM D6304	<500	<b>45.3</b>	48.0	---

HEAVY METALS		method	limit/base	current	history1	history2
Aluminum	ppm	ASTM D5185m	<0.1	<b>0</b>	0	---
Nickel	ppm	ASTM D5185m	<0.1	<b>0</b>	0	---
Lead	ppm	ASTM D5185m	<0.1	<b>&lt;1</b>	<1	---
Vanadium	ppm	ASTM D5185m	<0.1	<b>&lt;1</b>	0	---
Iron	ppm	ASTM D5185m	<0.1	<b>0</b>	0	---
Calcium	ppm	ASTM D5185m	<0.1	<b>9</b>	0	---
Magnesium	ppm	ASTM D5185m	<0.1	<b>16</b>	<1	---
Phosphorus	ppm	ASTM D5185m	<0.1	<b>9</b>	0	---
Zinc	ppm	ASTM D5185m	<0.1	<b>26</b>	0	---

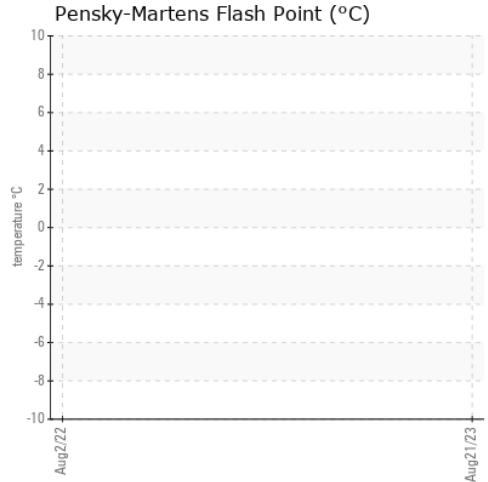
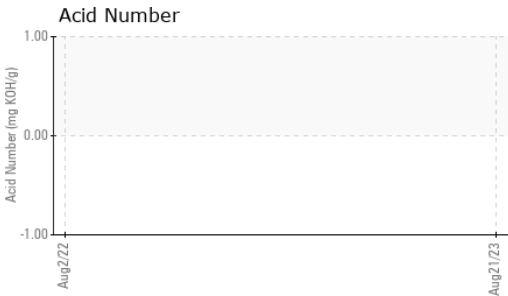
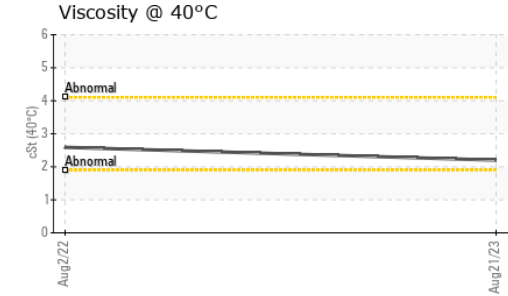
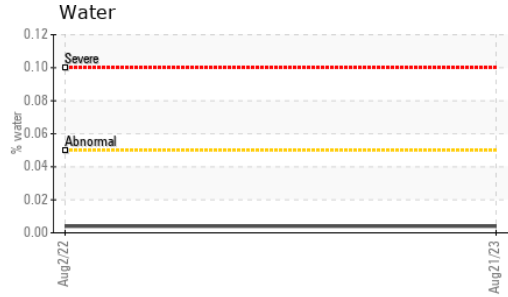
**SAMPLE IMAGES**

method	limit/base	current	history1	history2
Color				<i>no image</i>
Bottom				<i>no image</i>



**FUEL REPORT**

**GRAPHS**



Certificate L2367

**Laboratory** : WearCheck USA - 501 Madison Ave., Cary, NC 27513  
**Sample No.** : VCP415868 **Received** : 28 Aug 2023  
**Lab Number** : **05936482** **Diagnosed** : 03 Sep 2023  
**Unique Number** : 10621753 **Diagnostician** : Doug Bogart  
**Test Package** : MOB 1 ( Additional Tests: KF )

**SCOTT EQUIPMENT COMPANY LLC - Lake Charles**  
 PO BOX 16955  
 LAKE CHARLES, LA  
 US 70616  
 Contact: SAMANTHA SOILEAU  
 ssoileau@scottcompanies.com  
 T: (337)433-9811  
 F: (318)433-6623

To discuss this sample report, contact Customer Service at 1-800-237-1369.

\* - Denotes test methods that are outside of the ISO 17025 scope of accreditation.

Statements of conformity to specifications are based on the simple acceptance decision rule (JCGM 106:2012)