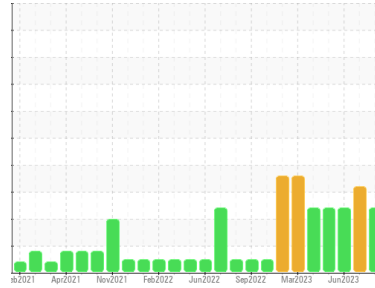


# PROBLEM SUMMARY

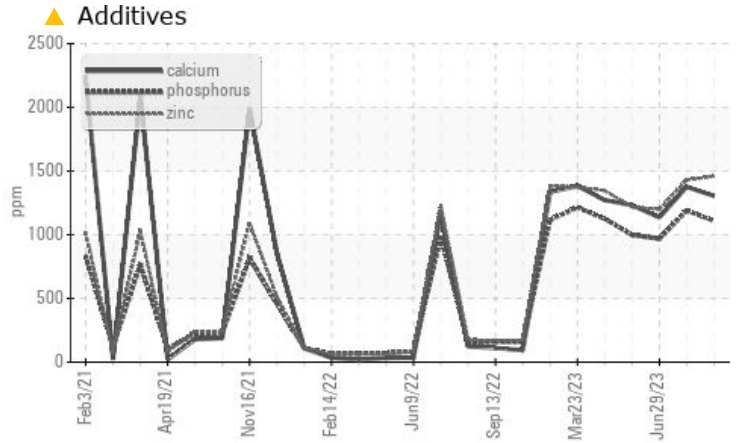
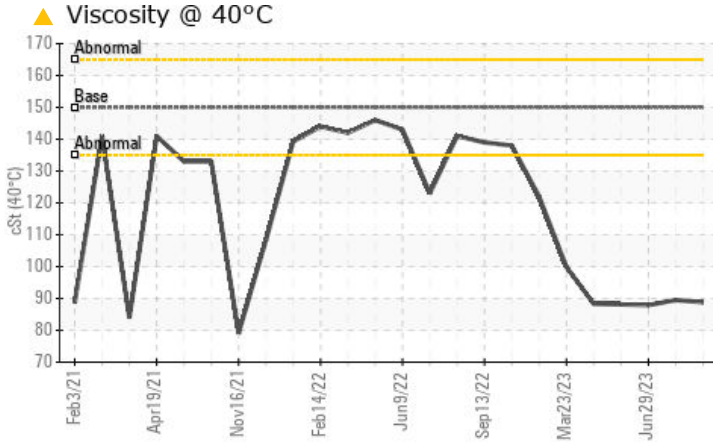
Sample Rating Trend

**VISCOSITY**

Area  
**{UNASSIGNED}**  
 Machine Id  
**P-1301B PUMP (S/N R11Q6290AX-01)**  
 Component  
**Pump**  
 Fluid  
**ROYAL PURPLE SYNFILM GT 150 (5 GAL)**



## COMPONENT CONDITION SUMMARY



## RECOMMENDATION

We recommend an early resample to monitor this condition.

## PROBLEMATIC TEST RESULTS

Sample Status			ATTENTION	ABNORMAL	ATTENTION
Magnesium	ppm	ASTM D5185m	▲ 1335	▲ 1282	▲ 1114
Calcium	ppm	ASTM D5185m	▲ 1305	▲ 1376	▲ 1136
Phosphorus	ppm	ASTM D5185m	▲ 1108	▲ 1191	▲ 968
Zinc	ppm	ASTM D5185m	▲ 1459	▲ 1429	▲ 1198
Visc @ 40°C	cSt	ASTM D445 150	▲ 88.8	▲ 89.5	▲ 87.9

Customer Id: TEABOG  
 Sample No.: RP0038770  
 Lab Number: 05936767  
 Test Package: IND 2



To manage this report scan the QR code

To discuss the diagnosis or test data:  
 Don Baldrige +1  
[don.b505@comcast.net](mailto:don.b505@comcast.net)

To change component or sample information:  
 Customer Service +1 1-800-237-1369  
[customerservice@wearcheck.com](mailto:customerservice@wearcheck.com)

## RECOMMENDED ACTIONS

Action	Status	Date	Done By	Description
Resample	---	---	?	We recommend an early resample to monitor this condition.

## HISTORICAL DIAGNOSIS

### 02 Aug 2023 Diag: Don Baldrige

#### SEDIMENT



We recommend an early resample to monitor this condition. All component wear rates are normal. There is a moderate amount of visible silt present in the sample. The oil viscosity is lower than normal. Additive levels indicate the addition of a different brand, or type of oil. Confirm oil type.

[view report](#)



### 29 Jun 2023 Diag: Don Baldrige

#### VISCOSITY



We recommend an early resample to monitor this condition. All component wear rates are normal. There is no indication of any contamination in the oil. The oil viscosity is lower than normal. Additive levels indicate the addition of a different brand, or type of oil. Confirm oil type.

[view report](#)



### 17 May 2023 Diag: Angela Borella

#### VISCOSITY



We recommend an early resample to monitor this condition. All component wear rates are normal. There is no indication of any contamination in the oil. The oil viscosity is lower than normal. Additive levels indicate the addition of a different brand, or type of oil. Confirm oil type.

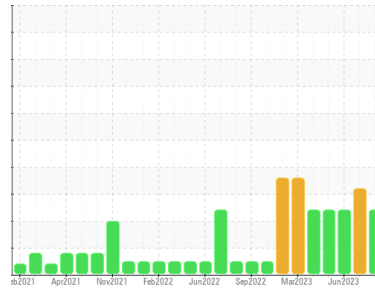
[view report](#)





# OIL ANALYSIS REPORT

Sample Rating Trend



## VISCOSITY



Area  
**{UNASSIGNED}**  
 Machine Id  
**P-1301B PUMP (S/N R11Q6290AX-01)**  
 Component  
**Pump**  
 Fluid  
**ROYAL PURPLE SYNFILM GT 150 (5 GAL)**

### DIAGNOSIS

#### Recommendation

We recommend an early resample to monitor this condition.

#### Wear

All component wear rates are normal.

#### Contamination

There is no indication of any contamination in the oil.

#### Fluid Condition

The oil viscosity is lower than normal. Additive levels indicate the addition of a different brand, or type of oil. Confirm oil type.

### SAMPLE INFORMATION

method	limit/base	current	history1	history2
Sample Number	Client Info	<b>RP0038770</b>	RP0038337	RP0035750
Sample Date	Client Info	<b>22 Aug 2023</b>	02 Aug 2023	29 Jun 2023
Machine Age	hrs	Client Info	71201	71201
Oil Age	hrs	Client Info	6866	6866
Oil Changed	Client Info	<b>Not Chngd</b>	Not Chngd	Not Chngd
Sample Status		<b>ATTENTION</b>	ABNORMAL	ATTENTION

### WEAR METALS

method	limit/base	current	history1	history2	
Iron	ppm	ASTM D5185m >90	<b>10</b>	6	10
Chromium	ppm	ASTM D5185m >5	<b>&lt;1</b>	<1	<1
Nickel	ppm	ASTM D5185m >5	<b>0</b>	<1	0
Titanium	ppm	ASTM D5185m >3	<b>0</b>	0	<1
Silver	ppm	ASTM D5185m >3	<b>&lt;1</b>	<1	0
Aluminum	ppm	ASTM D5185m >7	<b>&lt;1</b>	1	<1
Lead	ppm	ASTM D5185m >12	<b>&lt;1</b>	1	0
Copper	ppm	ASTM D5185m >30	<b>8</b>	9	6
Tin	ppm	ASTM D5185m >9	<b>&lt;1</b>	0	0
Vanadium	ppm	ASTM D5185m	<b>0</b>	0	0
Cadmium	ppm	ASTM D5185m	<b>0</b>	0	0

### ADDITIVES

method	limit/base	current	history1	history2	
Boron	ppm	ASTM D5185m	<b>0</b>	0	0
Barium	ppm	ASTM D5185m	<b>0</b>	0	0
Molybdenum	ppm	ASTM D5185m	<b>44</b>	49	42
Manganese	ppm	ASTM D5185m	<b>&lt;1</b>	0	<1
Magnesium	ppm	ASTM D5185m	<b>▲ 1335</b>	▲ 1282	▲ 1114
Calcium	ppm	ASTM D5185m	<b>▲ 1305</b>	▲ 1376	▲ 1136
Phosphorus	ppm	ASTM D5185m	<b>▲ 1108</b>	▲ 1191	▲ 968
Zinc	ppm	ASTM D5185m	<b>▲ 1459</b>	▲ 1429	▲ 1198

### CONTAMINANTS

method	limit/base	current	history1	history2	
Silicon	ppm	ASTM D5185m >60	<b>6</b>	6	5
Sodium	ppm	ASTM D5185m	<b>2</b>	2	2
Potassium	ppm	ASTM D5185m >20	<b>0</b>	<1	0
Water	%	ASTM D6304	<b>0.066</b>	0.059	0.084
ppm Water	ppm	ASTM D6304 >.1	<b>665.6</b>	596.6	842.7

### FLUID DEGRADATION

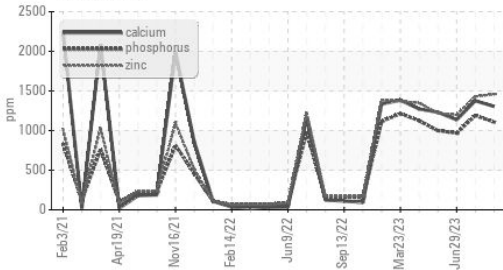
method	limit/base	current	history1	history2	
Acid Number (AN)	mg KOH/g	ASTM D8045	<b>2.10</b>	2.33	2.13

### VISUAL

method	limit/base	current	history1	history2	
White Metal	scalar	*Visual NONE	<b>NONE</b>	NONE	NONE
Yellow Metal	scalar	*Visual NONE	<b>NONE</b>	NONE	NONE
Precipitate	scalar	*Visual NONE	<b>NONE</b>	NONE	NONE
Silt	scalar	*Visual NONE	<b>NONE</b>	▲ MODER	NONE
Debris	scalar	*Visual NONE	<b>NONE</b>	NONE	NONE
Sand/Dirt	scalar	*Visual NONE	<b>NONE</b>	NONE	NONE
Appearance	scalar	*Visual NORML	<b>NORML</b>	NORML	NORML
Odor	scalar	*Visual NORML	<b>NORML</b>	NORML	NORML
Emulsified Water	scalar	*Visual	<b>NEG</b>	NEG	NEG
Free Water	scalar	*Visual	<b>NEG</b>	NEG	NEG

# OIL ANALYSIS REPORT

## ▲ Additives

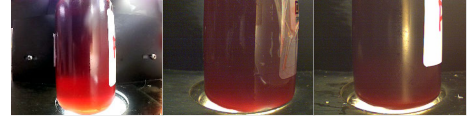


## FLUID PROPERTIES

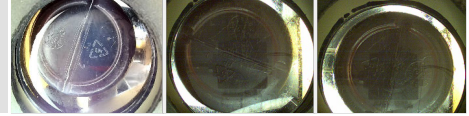
method	limit/base	current	history1	history2		
Visc @ 40°C	cSt	ASTM D445	150	▲ 88.8	▲ 89.5	▲ 87.9

## SAMPLE IMAGES

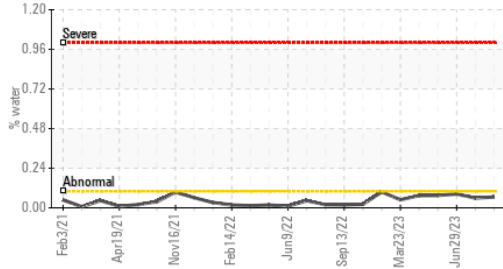
Color



Bottom

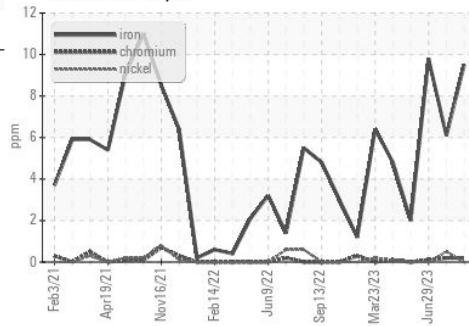


## Water

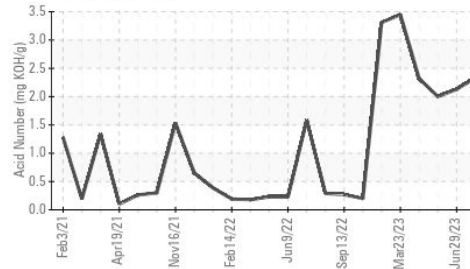


## GRAPHS

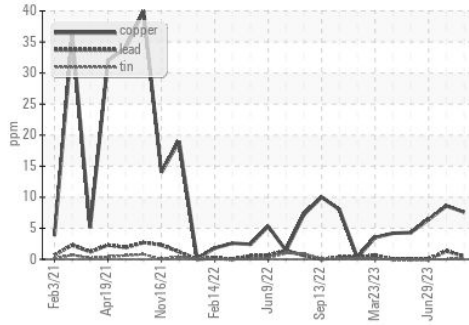
### Ferrous Alloys



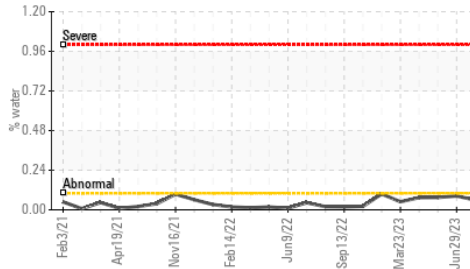
## Acid Number



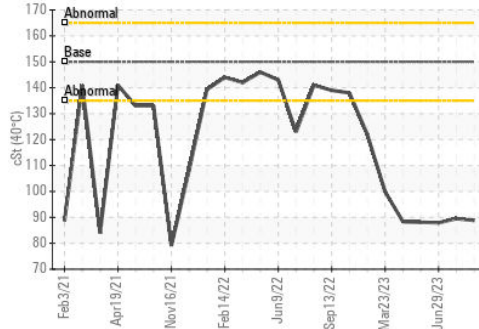
### Non-ferrous Metals



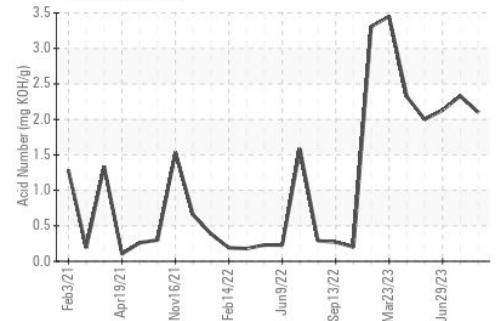
## Water



## ▲ Viscosity @ 40°C



## Acid Number



Certificate L2367

**Laboratory** : WearCheck USA - 501 Madison Ave., Cary, NC 27513  
**Sample No.** : RP0038770 **Received** : 28 Aug 2023  
**Lab Number** : 05936767 **Diagnosed** : 29 Aug 2023  
**Unique Number** : 10622038 **Diagnostician** : Don Baldrige  
**Test Package** : IND 2

**TEAM SUR S.A.S.**

BOGOTA,  
CO

Contact: Team Sur  
jconde@teamsur.com

T: (300)740-0654

F:

To discuss this sample report, contact Customer Service at 1-800-237-1369.

\* - Denotes test methods that are outside of the ISO 17025 scope of accreditation.

Statements of conformity to specifications are based on the simple acceptance decision rule (JCGM 106:2012)