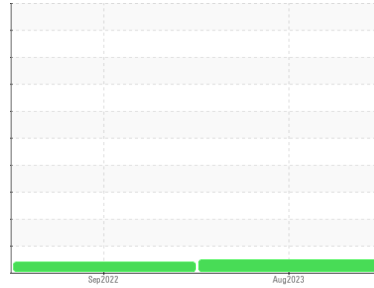




OIL ANALYSIS REPORT

Sample Rating Trend



NORMAL



Machine Id
CARRIER CIRCUIT A - CENTRAL REGIONAL HOSPITAL (S/N 1308Q92404)
 Component
Screw Compressor
 Fluid
CARRIER (8 GAL)

DIAGNOSIS

Recommendation

Resample at the next service interval to monitor. Note that there appears to be a discrepancy in the total time on this component, when compared to the historical data.

Wear

All component wear rates are normal.

Contamination

There is no indication of any contamination in the oil.

Fluid Condition

The AN level is acceptable for this fluid. The condition of the oil is acceptable for the time in service.

SAMPLE INFORMATION

	method	limit/base	current	history1	history2
Sample Number	Client Info		WC0853652	WC0672634	---
Sample Date	Client Info		28 Aug 2023	15 Sep 2022	---
Machine Age	hrs	Client Info	48679	70813	---
Oil Age	hrs	Client Info	48679	45553	---
Oil Changed		Client Info	Not Chngd	Filtered	---
Sample Status			NORMAL	MARGINAL	---

WEAR METALS

	method	limit/base	current	history1	history2
Iron	ppm	ASTM D5185m >60	4	4	---
Chromium	ppm	ASTM D5185m >4	<1	0	---
Nickel	ppm	ASTM D5185m	0	0	---
Titanium	ppm	ASTM D5185m	<1	0	---
Silver	ppm	ASTM D5185m	0	<1	---
Aluminum	ppm	ASTM D5185m >5	<1	1	---
Lead	ppm	ASTM D5185m >10	<1	0	---
Copper	ppm	ASTM D5185m >30	<1	0	---
Tin	ppm	ASTM D5185m >15	<1	<1	---
Vanadium	ppm	ASTM D5185m	<1	0	---
Cadmium	ppm	ASTM D5185m	<1	0	---

ADDITIVES

	method	limit/base	current	history1	history2
Boron	ppm	ASTM D5185m	0	<1	---
Barium	ppm	ASTM D5185m	0	0	---
Molybdenum	ppm	ASTM D5185m	0	0	---
Manganese	ppm	ASTM D5185m	<1	0	---
Magnesium	ppm	ASTM D5185m	6	0	---
Calcium	ppm	ASTM D5185m	0	0	---
Phosphorus	ppm	ASTM D5185m	30	34	---
Zinc	ppm	ASTM D5185m	11	0	---
Sulfur	ppm	ASTM D5185m	0	0	---

CONTAMINANTS

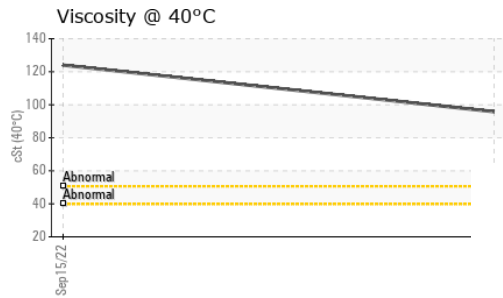
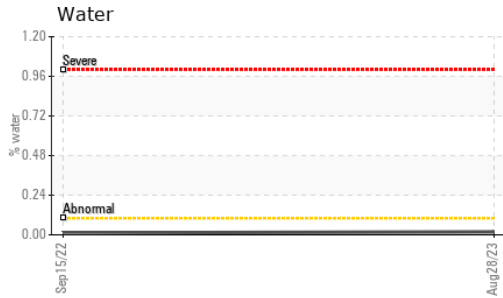
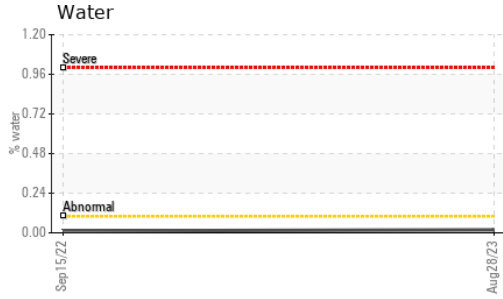
	method	limit/base	current	history1	history2
Silicon	ppm	ASTM D5185m >50	17	22	---
Sodium	ppm	ASTM D5185m	<1	0	---
Potassium	ppm	ASTM D5185m >20	2	0	---
Water	%	ASTM D6304 >0.1	0.018	0.012	---
ppm Water	ppm	ASTM D6304 >1000	180.5	121.4	---

FLUID DEGRADATION

	method	limit/base	current	history1	history2
Acid Number (AN)	mg KOH/g	ASTM D8045	0.015	0.014	---



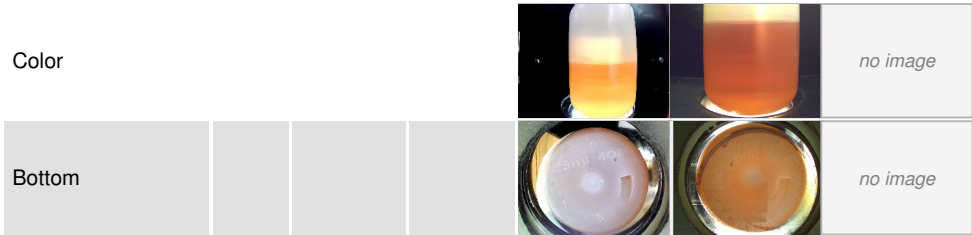
OIL ANALYSIS REPORT



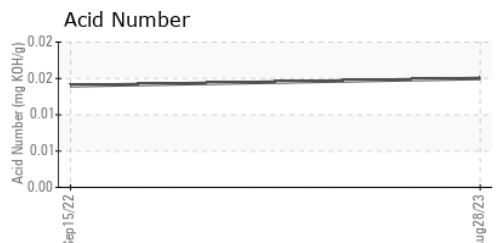
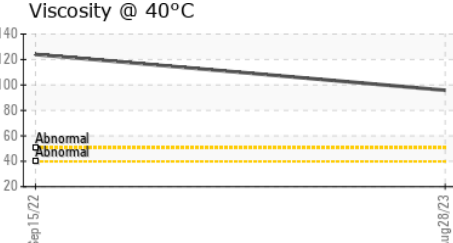
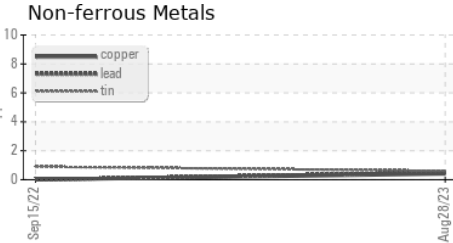
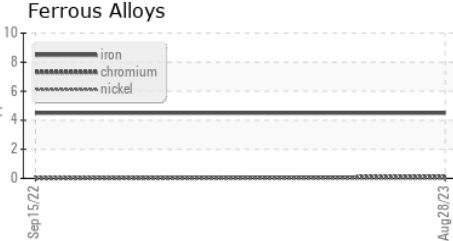
VISUAL	method	limit/base	current	history1	history2
White Metal	scalar	*Visual	NONE	NONE	---
Yellow Metal	scalar	*Visual	NONE	NONE	---
Precipitate	scalar	*Visual	NONE	NONE	---
Silt	scalar	*Visual	NONE	NONE	---
Debris	scalar	*Visual	NONE	NONE	---
Sand/Dirt	scalar	*Visual	NONE	NONE	---
Appearance	scalar	*Visual	NORML	NORML	---
Odor	scalar	*Visual	NORML	NORML	---
Emulsified Water	scalar	*Visual	>0.1	NEG	---
Free Water	scalar	*Visual		NEG	---

FLUID PROPERTIES	method	limit/base	current	history1	history2
Visc @ 40°C	cSt	ASTM D445	95.8	▲ 124	---

SAMPLE IMAGES	method	limit/base	current	history1	history2
---------------	--------	------------	---------	----------	----------



GRAPHS



Certificate L2367

Laboratory : WearCheck USA - 501 Madison Ave., Cary, NC 27513
Sample No. : WC0853652 **Received** : 29 Aug 2023
Lab Number : 05937308 **Diagnosed** : 30 Aug 2023
Unique Number : 10622579 **Diagnostician** : Don Baldrige
Test Package : IND 2 (Additional Tests: KF)

SCHNEIDER ELECTRIC
 PO DRAWER 185
 MORRISVILLE, NC
 US 27560
 Contact: MARK SORRELL
 mark.sorrell@se.com
 T: (919)467-0106
 F: (919)467-7466

To discuss this sample report, contact Customer Service at 1-800-237-1369.

* - Denotes test methods that are outside of the ISO 17025 scope of accreditation.

Statements of conformity to specifications are based on the simple acceptance decision rule (JCGM 106:2012)