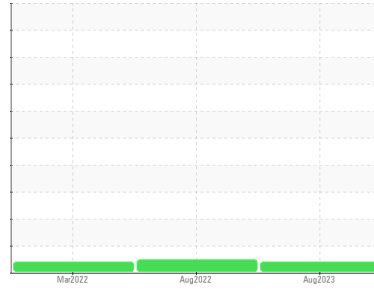




# PROBLEM SUMMARY

Sample Rating Trend



## VIS DEBRIS



Machine Id  
**KAESER 7332503**

Component  
**Compressor**

Fluid  
**KAESER SIGMA (OEM) S-460 (--- GAL)**

### COMPONENT CONDITION SUMMARY

No relevant graphs to display

### RECOMMENDATION

Oil and filter change at the time of sampling has been noted. No corrective action is recommended at this time. Resample at the next service interval to monitor. We were unable to perform a particle count due to a high concentration of particles present in this sample.

### PROBLEMATIC TEST RESULTS

Sample Status				ABNORMAL	NORMAL	ABNORMAL
Debris	scalar	*Visual	NONE	▲ MODER	LIGHT	▲ MODER

Customer Id: AMABAK  
Sample No.: KCP55325  
Lab Number: 05938290  
Test Package: IND 2



To manage this report scan the QR code

To discuss the diagnosis or test data:  
Don Baldrige +1  
[don.b505@comcast.net](mailto:don.b505@comcast.net)

To change component or sample information:  
Customer Service +1 1-800-237-1369  
[customerservice@wearcheck.com](mailto:customerservice@wearcheck.com)

## RECOMMENDED ACTIONS

Action	Status	Date	Done By	Description
Change Fluid	---	---	?	Oil and filter change at the time of sampling has been noted.
Change Filter	---	---	?	Oil and filter change at the time of sampling has been noted.
Alert	---	---	?	We were unable to perform a particle count due to a high concentration of particles present in this sample.

## HISTORICAL DIAGNOSIS

### 17 Aug 2022 Diag: Doug Bogart

#### NORMAL



No corrective action is recommended at this time. Oil and filter change at the time of sampling has been noted. Resample at the next service interval to monitor. All component wear rates are normal. There is no indication of any contamination in the oil. The amount and size of particulates present in the system are acceptable. The AN level is acceptable for this fluid. The condition of the oil is suitable for further service.

view report



### 01 Mar 2022 Diag: Jonathan Hester

#### VIS DEBRIS



The filter change at the time of sampling has been noted. Resample at the next service interval to monitor. We were unable to perform a particle count due to a high concentration of particles present in this sample. All component wear rates are normal. Moderate concentration of visible dirt/debris present in the oil. The AN level is acceptable for this fluid. The condition of the oil is suitable for further service.

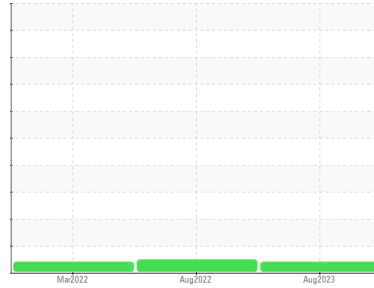
view report





# OIL ANALYSIS REPORT

Sample Rating Trend



VIS DEBRIS



Machine Id  
**KAESER 7332503**

Component  
**Compressor**  
Fluid  
**KAESER SIGMA (OEM) S-460 (--- GAL)**

## DIAGNOSIS

### Recommendation

Oil and filter change at the time of sampling has been noted. No corrective action is recommended at this time. Resample at the next service interval to monitor. We were unable to perform a particle count due to a high concentration of particles present in this sample.

### Wear

All component wear rates are normal.

### Contamination

Moderate concentration of visible dirt/debris present in the oil.

### Fluid Condition

The AN level is acceptable for this fluid. The condition of the oil is suitable for further service.

## SAMPLE INFORMATION

	method	limit/base	current	history1	history2
Sample Number	Client Info		<b>KCP55325</b>	KC103347	KC87994
Sample Date	Client Info		<b>21 Aug 2023</b>	17 Aug 2022	01 Mar 2022
Machine Age	hrs	Client Info	<b>15505</b>	9510	6923
Oil Age	hrs	Client Info	<b>6582</b>	9510	2757
Oil Changed	Client Info		<b>Changed</b>	Changed	Not Changed
Sample Status			<b>ABNORMAL</b>	NORMAL	ABNORMAL

## WEAR METALS

	method	limit/base	current	history1	history2
Iron	ppm	ASTM D5185m >50	<b>0</b>	0	0
Chromium	ppm	ASTM D5185m >10	<b>0</b>	0	0
Nickel	ppm	ASTM D5185m >3	<b>0</b>	0	0
Titanium	ppm	ASTM D5185m >3	<b>0</b>	0	0
Silver	ppm	ASTM D5185m >2	<b>0</b>	0	0
Aluminum	ppm	ASTM D5185m >10	<b>&lt;1</b>	<1	<1
Lead	ppm	ASTM D5185m >10	<b>0</b>	0	0
Copper	ppm	ASTM D5185m >50	<b>4</b>	5	1
Tin	ppm	ASTM D5185m >10	<b>0</b>	0	0
Vanadium	ppm	ASTM D5185m	<b>0</b>	0	0
Cadmium	ppm	ASTM D5185m	<b>0</b>	0	0

## ADDITIVES

	method	limit/base	current	history1	history2
Boron	ppm	ASTM D5185m	<b>0</b>	0	0
Barium	ppm	ASTM D5185m 90	<b>5</b>	10	29
Molybdenum	ppm	ASTM D5185m	<b>0</b>	0	0
Manganese	ppm	ASTM D5185m	<b>0</b>	0	0
Magnesium	ppm	ASTM D5185m 90	<b>25</b>	31	64
Calcium	ppm	ASTM D5185m 2	<b>0</b>	<1	0
Phosphorus	ppm	ASTM D5185m	<b>0</b>	2	0
Zinc	ppm	ASTM D5185m	<b>5</b>	3	0
Sulfur	ppm	ASTM D5185m	<b>21708</b>	17216	16268

## CONTAMINANTS

	method	limit/base	current	history1	history2
Silicon	ppm	ASTM D5185m >25	<b>&lt;1</b>	<1	0
Sodium	ppm	ASTM D5185m	<b>2</b>	12	18
Potassium	ppm	ASTM D5185m >20	<b>2</b>	0	3
Water	%	ASTM D6304 >0.05	<b>0.018</b>	0.014	0.021
ppm Water	ppm	ASTM D6304 >500	<b>188.1</b>	143.4	212.0

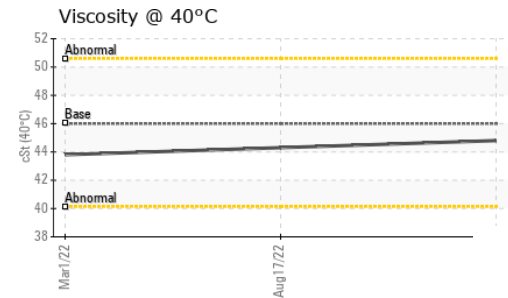
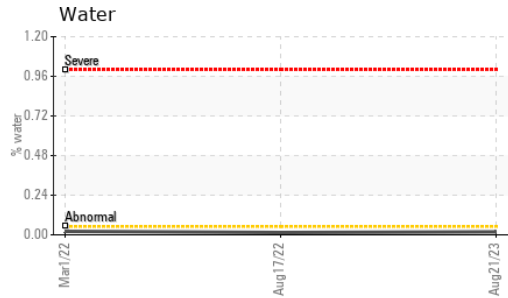
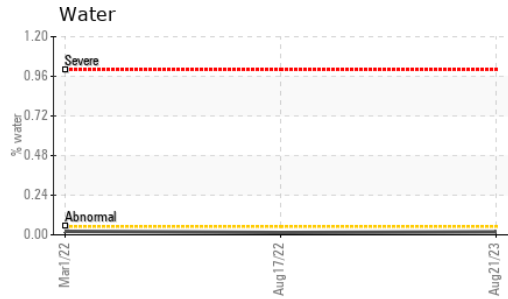
## FLUID CLEANLINESS

	method	limit/base	current	history1	history2
Particles >4µm	ASTM D7647		<b>---</b>	3068	---
Particles >6µm	ASTM D7647 >1300		<b>---</b>	992	---
Particles >14µm	ASTM D7647 >80		<b>---</b>	77	---
Particles >21µm	ASTM D7647 >20		<b>---</b>	10	---
Particles >38µm	ASTM D7647 >4		<b>---</b>	0	---
Particles >71µm	ASTM D7647 >3		<b>---</b>	0	---
Oil Cleanliness	ISO 4406 (c) >--/17/13		<b>---</b>	19/17/13	---

## FLUID DEGRADATION

	method	limit/base	current	history1	history2
Acid Number (AN)	mg KOH/g	ASTM D8045 0.4	<b>0.34</b>	0.37	0.36

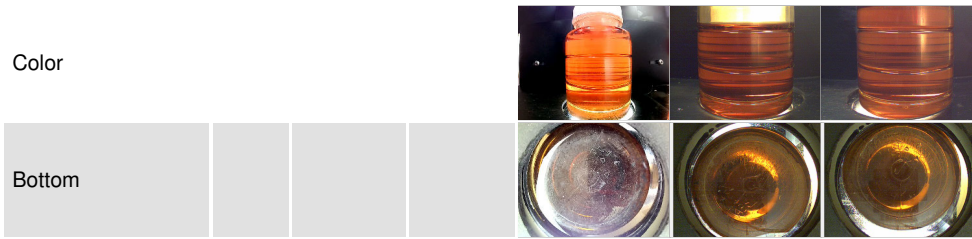
# OIL ANALYSIS REPORT



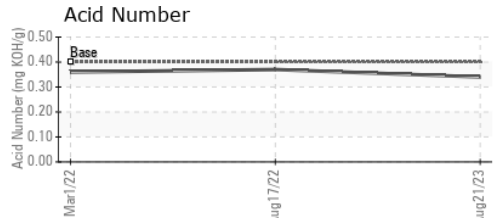
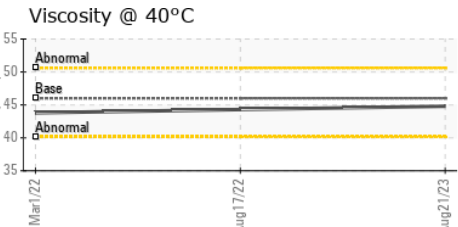
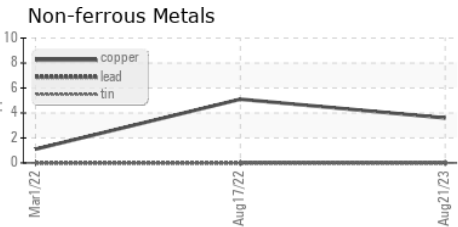
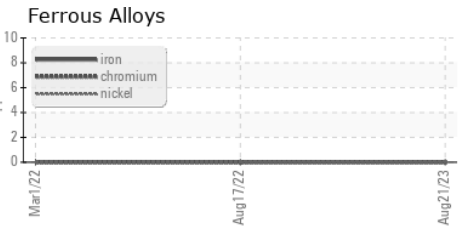
VISUAL	method	limit/base	current	history1	history2
White Metal	scalar	*Visual	NONE	NONE	NONE
Yellow Metal	scalar	*Visual	NONE	NONE	NONE
Precipitate	scalar	*Visual	NONE	NONE	NONE
Silt	scalar	*Visual	NONE	NONE	NONE
Debris	scalar	*Visual	▲ MODER	LIGHT	▲ MODER
Sand/Dirt	scalar	*Visual	NONE	NONE	NONE
Appearance	scalar	*Visual	NORML	NORML	NORML
Odor	scalar	*Visual	NORML	NORML	NORML
Emulsified Water	scalar	*Visual	>0.05	NEG	NEG
Free Water	scalar	*Visual		NEG	NEG

FLUID PROPERTIES	method	limit/base	current	history1	history2
Visc @ 40°C	cSt	ASTM D445 46	44.8	44.3	43.8

SAMPLE IMAGES	method	limit/base	current	history1	history2
---------------	--------	------------	---------	----------	----------



## GRAPHS



Certificate L2367

**Laboratory** : WearCheck USA - 501 Madison Ave., Cary, NC 27513  
**Sample No.** : KCP55325 **Received** : 30 Aug 2023  
**Lab Number** : 05938290 **Diagnosed** : 31 Aug 2023  
**Unique Number** : 10628902 **Diagnostician** : Don Baldrige  
**Test Package** : IND 2 ( Additional Tests: KF, PrtCount )

**AMAZON**  
 1601 PETROL RD  
 BAKERSFIELD, CA  
 US 93308  
 Contact: Service Manager

To discuss this sample report, contact Customer Service at 1-800-237-1369.

\* - Denotes test methods that are outside of the ISO 17025 scope of accreditation.

Statements of conformity to specifications are based on the simple acceptance decision rule (JCGM 106:2012)

T:  
F: