



OIL ANALYSIS REPORT

Sample Rating Trend

NORMAL



Area
[186389-N2STV4W]
 Machine Id
2327
 Component
Hydraulic System
 Fluid
MOBIL DTE 25 (--- GAL)



DIAGNOSIS

Recommendation

No corrective action is recommended at this time. Resample at the next service interval to monitor.

Wear

All component wear rates are normal.

Contamination

There is no indication of any contamination in the oil. The amount and size of particulates present in the system are acceptable.

Fluid Condition

The AN level is acceptable for this fluid. The condition of the oil is suitable for further service.

SAMPLE INFORMATION

	method	limit/base	current	history1	history2
Sample Number	Client Info		PH05938845	---	---
Sample Date	Client Info		29 Aug 2023	---	---
Machine Age	hrs	Client Info	0	---	---
Oil Age	hrs	Client Info	0	---	---
Oil Changed	Client Info		N/A	---	---
Sample Status			NORMAL	---	---

WEAR METALS

	method	limit/base	current	history1	history2
Iron	ppm	ASTM D5185m >20	0	---	---
Chromium	ppm	ASTM D5185m >20	0	---	---
Nickel	ppm	ASTM D5185m >20	0	---	---
Titanium	ppm	ASTM D5185m	0	---	---
Silver	ppm	ASTM D5185m	0	---	---
Aluminum	ppm	ASTM D5185m >20	<1	---	---
Lead	ppm	ASTM D5185m >20	0	---	---
Copper	ppm	ASTM D5185m >20	<1	---	---
Tin	ppm	ASTM D5185m >20	0	---	---
Vanadium	ppm	ASTM D5185m	0	---	---
Cadmium	ppm	ASTM D5185m	0	---	---

ADDITIVES

	method	limit/base	current	history1	history2
Boron	ppm	ASTM D5185m	0	---	---
Barium	ppm	ASTM D5185m	0	---	---
Molybdenum	ppm	ASTM D5185m	0	---	---
Manganese	ppm	ASTM D5185m	0	---	---
Magnesium	ppm	ASTM D5185m	0	---	---
Calcium	ppm	ASTM D5185m	98	---	---
Phosphorus	ppm	ASTM D5185m	405	---	---
Zinc	ppm	ASTM D5185m	624	---	---
Sulfur	ppm	ASTM D5185m	3379	---	---

CONTAMINANTS

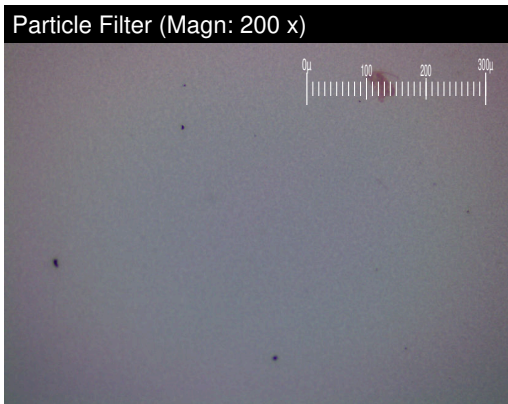
	method	limit/base	current	history1	history2
Silicon	ppm	ASTM D5185m >15	<1	---	---
Sodium	ppm	ASTM D5185m	1	---	---
Potassium	ppm	ASTM D5185m >20	0	---	---

FLUID CLEANLINESS

	method	limit/base	current	history1	history2
Particles >4µm	ASTM D7647	>10000	328	---	---
Particles >6µm	ASTM D7647	>2500	66	---	---
Particles >14µm	ASTM D7647	>320	8	---	---
Particles >21µm	ASTM D7647	>80	3	---	---
Particles >38µm	ASTM D7647	>20	0	---	---
Particles >71µm	ASTM D7647	>4	0	---	---
Oil Cleanliness	ISO 4406 (c)	>20/18/15	16/13/10	---	---

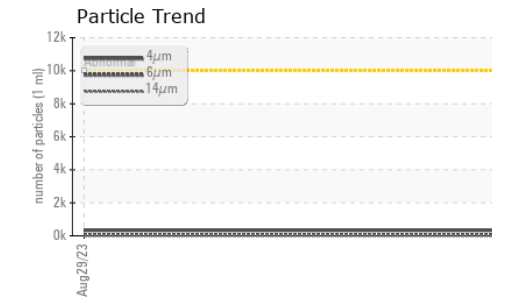
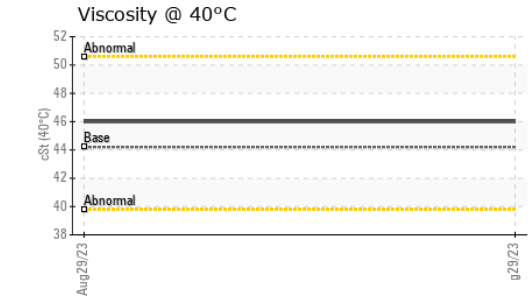
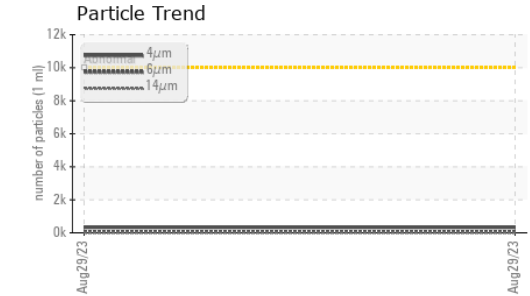
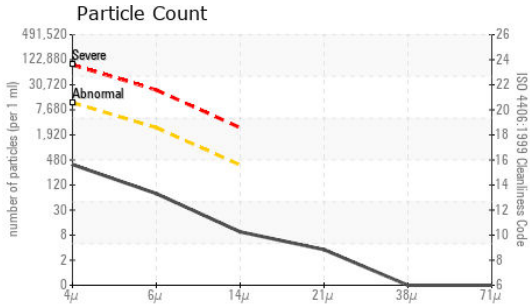
FLUID DEGRADATION

	method	limit/base	current	history1	history2
Acid Number (AN)	mg KOH/g	ASTM D8045	0.60	---	---





OIL ANALYSIS REPORT



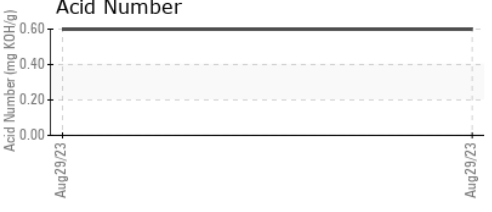
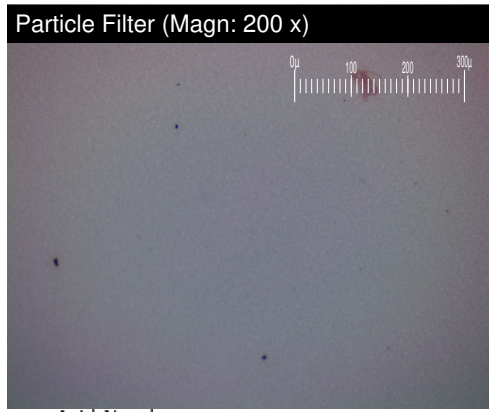
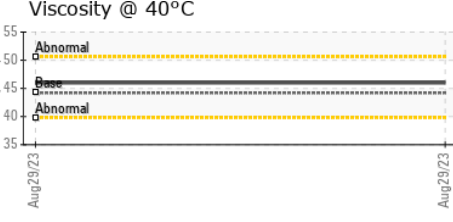
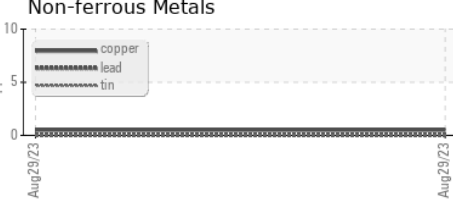
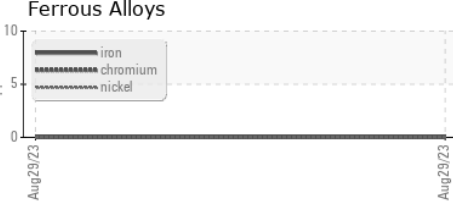
VISUAL	method	limit/base	current	history1	history2	
White Metal	scalar	*Visual	NONE	NONE	---	---
Yellow Metal	scalar	*Visual	NONE	NONE	---	---
Precipitate	scalar	*Visual	NONE	NONE	---	---
Silt	scalar	*Visual	NONE	NONE	---	---
Debris	scalar	*Visual	NONE	NONE	---	---
Sand/Dirt	scalar	*Visual	NONE	NONE	---	---
Appearance	scalar	*Visual	NORML	NORML	---	---
Odor	scalar	*Visual	NORML	NORML	---	---
Emulsified Water	scalar	*Visual	>0.05	NEG	---	---
Free Water	scalar	*Visual		NEG	---	---

FLUID PROPERTIES	method	limit/base	current	history1	history2	
Visc @ 40°C	cSt	ASTM D445	44.2	46.0	---	---

SAMPLE IMAGES	method	limit/base	current	history1	history2
---------------	--------	------------	---------	----------	----------

Color				no image	no image
Bottom				no image	no image
PrtFilter				no image	no image

GRAPHS



Laboratory : WearCheck USA - 501 Madison Ave., Cary, NC 27513
Sample No. : PH05938845 **Received** : 30 Aug 2023
Lab Number : 05938845 **Diagnosed** : 19 Sep 2023
Unique Number : 10629457 **Diagnostician** : Doug Bogart
Test Package : PLANT (Additional Tests: PrtFilter)

STRYKER CORP
 11576 MEMPHIS ARLINGTON RD
 ARLINGTON, TN
 US 38002
 Contact: BEN HINRICHS
 benjamin.hinrichs@stryker.com
 T: (901)930-7987
 F:

Certificate L2367
 To discuss this sample report, contact Customer Service at 1-800-237-1369.
 * - Denotes test methods that are outside of the ISO 17025 scope of accreditation.
 Statements of conformity to specifications are based on the simple acceptance decision rule (JCGM 106:2012)