



OIL ANALYSIS REPORT

Sample Rating Trend

NORMAL



Area
[186385-N2STV4W]
 Machine Id
2326
 Component
Hydraulic System
 Fluid
MOBIL DTE 25 (--- GAL)

DIAGNOSIS

Recommendation

No corrective action is recommended at this time. Resample at the next service interval to monitor.

Wear

All component wear rates are normal.

Contamination

There is no indication of any contamination in the oil. The amount and size of particulates present in the system are acceptable.

Fluid Condition

The AN level is acceptable for this fluid. The condition of the oil is suitable for further service.

| SAMPLE INFORMATION | | method | limit/base | current | history1 | history2 |
|--------------------|-------------|-------------|------------|--------------------|----------|----------|
| Sample Number | Client Info | | | PH05938846 | --- | --- |
| Sample Date | Client Info | | | 29 Aug 2023 | --- | --- |
| Machine Age | hrs | Client Info | | 0 | --- | --- |
| Oil Age | hrs | Client Info | | 0 | --- | --- |
| Oil Changed | Client Info | | | N/A | --- | --- |
| Sample Status | | | | NORMAL | --- | --- |

| WEAR METALS | | method | limit/base | current | history1 | history2 |
|-------------|-----|-------------|------------|--------------|----------|----------|
| Iron | ppm | ASTM D5185m | >20 | 0 | --- | --- |
| Chromium | ppm | ASTM D5185m | >20 | 0 | --- | --- |
| Nickel | ppm | ASTM D5185m | >20 | 0 | --- | --- |
| Titanium | ppm | ASTM D5185m | | 0 | --- | --- |
| Silver | ppm | ASTM D5185m | | 0 | --- | --- |
| Aluminum | ppm | ASTM D5185m | >20 | <1 | --- | --- |
| Lead | ppm | ASTM D5185m | >20 | 0 | --- | --- |
| Copper | ppm | ASTM D5185m | >20 | <1 | --- | --- |
| Tin | ppm | ASTM D5185m | >20 | 0 | --- | --- |
| Vanadium | ppm | ASTM D5185m | | 0 | --- | --- |
| Cadmium | ppm | ASTM D5185m | | 0 | --- | --- |

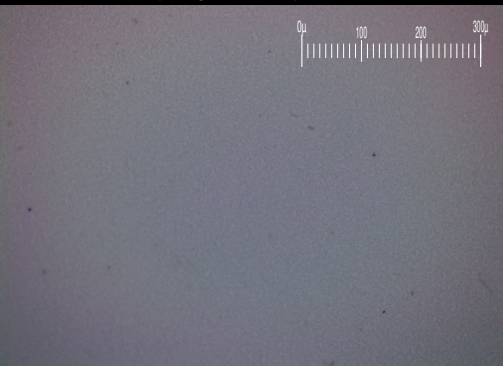
| ADDITIVES | | method | limit/base | current | history1 | history2 |
|------------|-----|-------------|------------|-------------|----------|----------|
| Boron | ppm | ASTM D5185m | | 0 | --- | --- |
| Barium | ppm | ASTM D5185m | | 0 | --- | --- |
| Molybdenum | ppm | ASTM D5185m | | 0 | --- | --- |
| Manganese | ppm | ASTM D5185m | | 0 | --- | --- |
| Magnesium | ppm | ASTM D5185m | | 0 | --- | --- |
| Calcium | ppm | ASTM D5185m | | 97 | --- | --- |
| Phosphorus | ppm | ASTM D5185m | | 413 | --- | --- |
| Zinc | ppm | ASTM D5185m | | 611 | --- | --- |
| Sulfur | ppm | ASTM D5185m | | 3281 | --- | --- |

| CONTAMINANTS | | method | limit/base | current | history1 | history2 |
|--------------|-----|-------------|------------|--------------|----------|----------|
| Silicon | ppm | ASTM D5185m | >15 | <1 | --- | --- |
| Sodium | ppm | ASTM D5185m | | 1 | --- | --- |
| Potassium | ppm | ASTM D5185m | >20 | 0 | --- | --- |

| FLUID CLEANLINESS | | method | limit/base | current | history1 | history2 |
|-------------------|--|--------------|------------|-----------------|----------|----------|
| Particles >4µm | | ASTM D7647 | >10000 | 493 | --- | --- |
| Particles >6µm | | ASTM D7647 | >2500 | 104 | --- | --- |
| Particles >14µm | | ASTM D7647 | >320 | 11 | --- | --- |
| Particles >21µm | | ASTM D7647 | >80 | 4 | --- | --- |
| Particles >38µm | | ASTM D7647 | >20 | 0 | --- | --- |
| Particles >71µm | | ASTM D7647 | >4 | 0 | --- | --- |
| Oil Cleanliness | | ISO 4406 (c) | >20/18/15 | 16/14/11 | --- | --- |

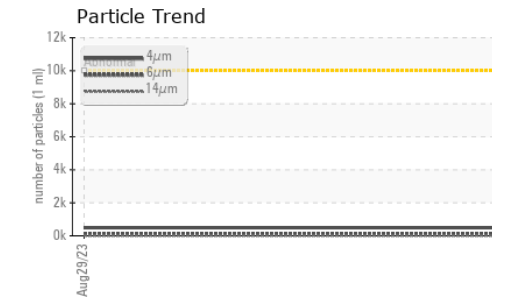
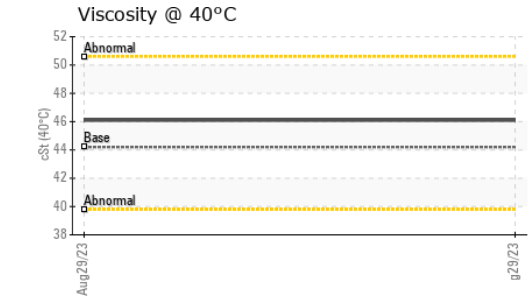
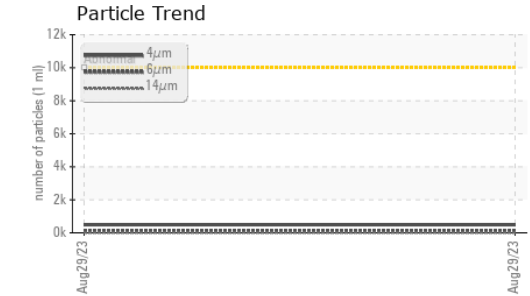
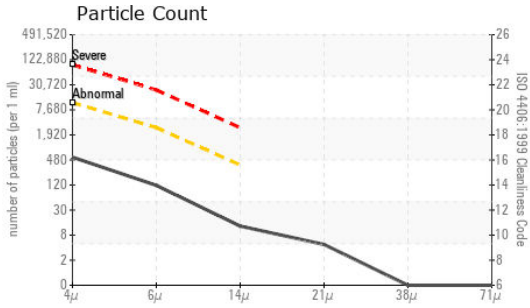
| FLUID DEGRADATION | | method | limit/base | current | history1 | history2 |
|-------------------|----------|------------|------------|-------------|----------|----------|
| Acid Number (AN) | mg KOH/g | ASTM D8045 | | 0.62 | --- | --- |

Particle Filter (Magn: 200 x)





OIL ANALYSIS REPORT



Laboratory : WearCheck USA - 501 Madison Ave., Cary, NC 27513
Sample No. : PH05938846 **Received** : 30 Aug 2023
Lab Number : 05938846 **Diagnosed** : 19 Sep 2023
Unique Number : 10629458 **Diagnostician** : Doug Bogart
Test Package : PLANT (Additional Tests: PrtFilter)

Certificate L2367
 To discuss this sample report, contact Customer Service at 1-800-237-1369.
 * - Denotes test methods that are outside of the ISO 17025 scope of accreditation.
 Statements of conformity to specifications are based on the simple acceptance decision rule (JCGM 106:2012)

STRYKER CORP
 11576 MEMPHIS ARLINGTON RD
 ARLINGTON, TN
 US 38002
 Contact: BEN HINRICHS
 benjamin.hinrichs@stryker.com
 T: (901)930-7987
 F:

| VISUAL | method | limit/base | current | history1 | history2 | |
|------------------|--------|------------|---------|----------|----------|-----|
| White Metal | scalar | *Visual | NONE | NONE | --- | --- |
| Yellow Metal | scalar | *Visual | NONE | NONE | --- | --- |
| Precipitate | scalar | *Visual | NONE | NONE | --- | --- |
| Silt | scalar | *Visual | NONE | NONE | --- | --- |
| Debris | scalar | *Visual | NONE | NONE | --- | --- |
| Sand/Dirt | scalar | *Visual | NONE | NONE | --- | --- |
| Appearance | scalar | *Visual | NORML | NORML | --- | --- |
| Odor | scalar | *Visual | NORML | NORML | --- | --- |
| Emulsified Water | scalar | *Visual | >0.05 | NEG | --- | --- |
| Free Water | scalar | *Visual | | NEG | --- | --- |

| FLUID PROPERTIES | method | limit/base | current | history1 | history2 | |
|------------------|--------|------------|---------|----------|----------|-----|
| Visc @ 40°C | cSt | ASTM D445 | 44.2 | 46.1 | --- | --- |

| SAMPLE IMAGES | method | limit/base | current | history1 | history2 |
|---------------|--------|------------|---------|----------|----------|
| Color | | | | no image | no image |
| Bottom | | | | no image | no image |
| PrtFilter | | | | no image | no image |

GRAPHS

