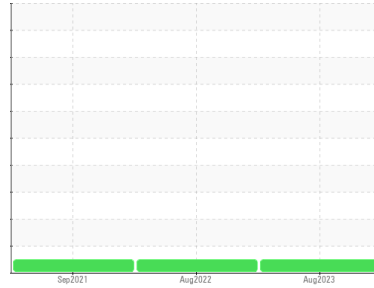




OIL ANALYSIS REPORT

Sample Rating Trend

NORMAL



Machine Id
BITLER PH2 22SC2 (S/N 07L400054)

Component
Screw Compressor
Fluid
SOLEST 170 (3 GAL)

DIAGNOSIS

Recommendation

Resample at the next service interval to monitor.

Wear

All component wear rates are normal.

Contamination

There is no indication of any contamination in the oil.

Fluid Condition

The AN level is acceptable for this fluid. The condition of the oil is suitable for further service.

SAMPLE INFORMATION

	method	limit/base	current	history1	history2
Sample Number	Client Info		WC0812034	WC0689510	WC0613581
Sample Date	Client Info		25 Aug 2023	15 Aug 2022	10 Sep 2021
Machine Age	hrs	Client Info	0	0	0
Oil Age	hrs	Client Info	0	0	0
Oil Changed	Client Info		N/A	N/A	N/A
Sample Status			NORMAL	NORMAL	NORMAL

WEAR METALS

	method	limit/base	current	history1	history2
Iron	ppm	ASTM D5185m >60	<1	<1	0
Chromium	ppm	ASTM D5185m >4	0	0	0
Nickel	ppm	ASTM D5185m	0	0	0
Titanium	ppm	ASTM D5185m	0	0	0
Silver	ppm	ASTM D5185m	0	0	<1
Aluminum	ppm	ASTM D5185m >5	0	<1	0
Lead	ppm	ASTM D5185m >10	0	<1	0
Copper	ppm	ASTM D5185m >30	0	<1	0
Tin	ppm	ASTM D5185m >15	0	1	<1
Antimony	ppm	ASTM D5185m	---	---	0
Vanadium	ppm	ASTM D5185m	0	0	0
Cadmium	ppm	ASTM D5185m	0	0	0

ADDITIVES

	method	limit/base	current	history1	history2
Boron	ppm	ASTM D5185m	0	1	<1
Barium	ppm	ASTM D5185m	2	0	0
Molybdenum	ppm	ASTM D5185m	0	0	0
Manganese	ppm	ASTM D5185m	0	0	0
Magnesium	ppm	ASTM D5185m	0	0	0
Calcium	ppm	ASTM D5185m	0	0	0
Phosphorus	ppm	ASTM D5185m	3	5	3
Zinc	ppm	ASTM D5185m	0	0	0
Sulfur	ppm	ASTM D5185m	0	0	0

CONTAMINANTS

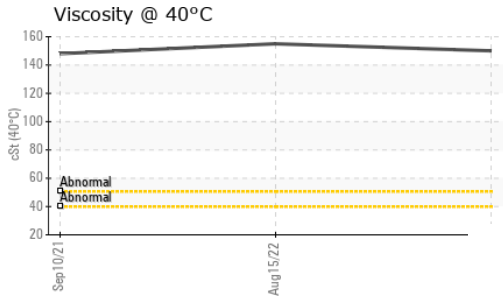
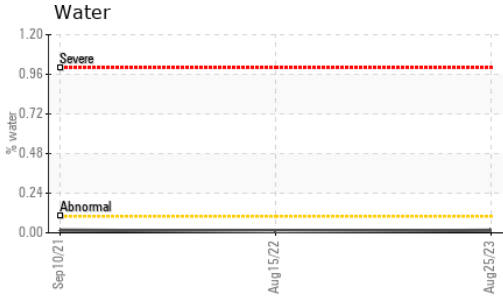
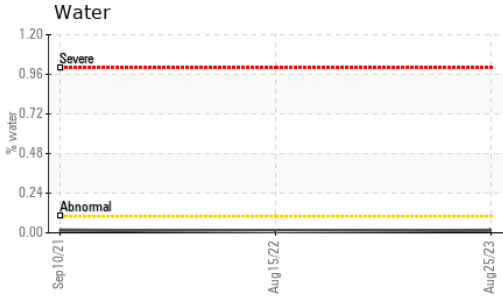
	method	limit/base	current	history1	history2
Silicon	ppm	ASTM D5185m >50	0	<1	0
Sodium	ppm	ASTM D5185m	0	<1	0
Potassium	ppm	ASTM D5185m >20	<1	0	0
Water	%	ASTM D6304 >0.1	0.015	0.009	0.016
ppm Water	ppm	ASTM D6304 >1000	153.0	90.7	161.6

FLUID DEGRADATION

	method	limit/base	current	history1	history2
Acid Number (AN)	mg KOH/g	ASTM D8045	0.015	0.013	0.015



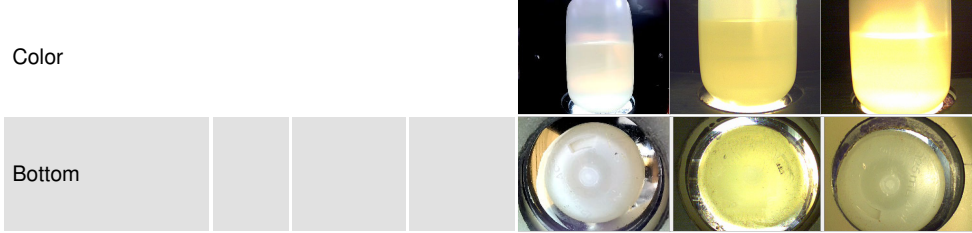
OIL ANALYSIS REPORT



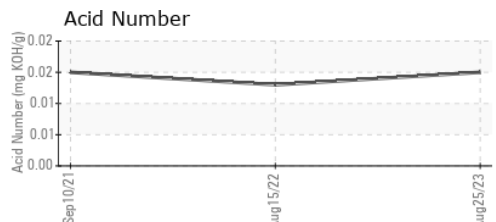
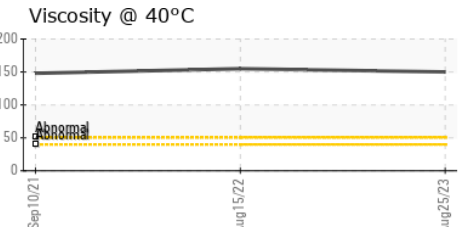
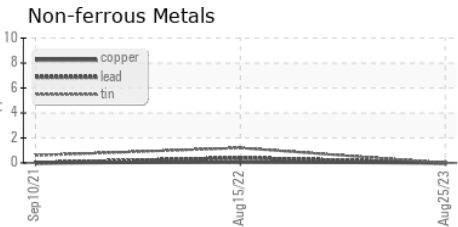
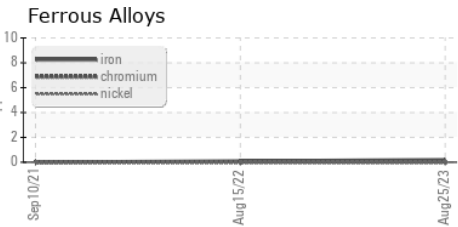
VISUAL	method	limit/base	current	history1	history2
White Metal	scalar	*Visual	NONE	NONE	NONE
Yellow Metal	scalar	*Visual	NONE	NONE	NONE
Precipitate	scalar	*Visual	NONE	NONE	NONE
Silt	scalar	*Visual	NONE	NONE	NONE
Debris	scalar	*Visual	NONE	NONE	NONE
Sand/Dirt	scalar	*Visual	NONE	NONE	NONE
Appearance	scalar	*Visual	NORML	NORML	NORML
Odor	scalar	*Visual	NORML	NORML	NORML
Emulsified Water	scalar	*Visual	>0.1	NEG	NEG
Free Water	scalar	*Visual		NEG	NEG

FLUID PROPERTIES	method	limit/base	current	history1	history2
Visc @ 40°C	cSt	ASTM D445	150	155	148

SAMPLE IMAGES	method	limit/base	current	history1	history2
---------------	--------	------------	---------	----------	----------



GRAPHS



Certificate L2367

Laboratory : WearCheck USA - 501 Madison Ave., Cary, NC 27513
 Sample No. : WC0812034 Received : 30 Aug 2023
 Lab Number : 05939014 Diagnosed : 31 Aug 2023
 Unique Number : 10629626 Diagnostician : Doug Bogart
 Test Package : IND 2 (Additional Tests: KF)

COMMERCIAL AIR SYSTEMS
 10 COUNTY LINE RD
 BRANCHBURG, NJ
 US 08876
 Contact: LARRY DELGUERCIO
 larry@commairsystems.com
 T: (908)927-9090
 F: (908)921-9091

To discuss this sample report, contact Customer Service at 1-800-237-1369.

* - Denotes test methods that are outside of the ISO 17025 scope of accreditation.

Statements of conformity to specifications are based on the simple acceptance decision rule (JCGM 106:2012)