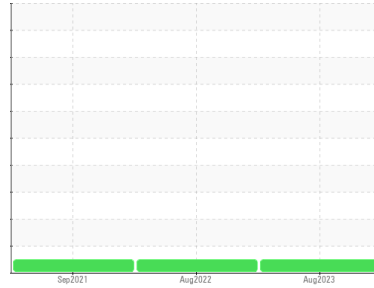




# OIL ANALYSIS REPORT

Sample Rating Trend

**NORMAL**



Machine Id  
**BITLER PH1 22C1 (S/N 07L400048)**

Component  
**Screw Compressor**  
Fluid  
**SOLEST 170 (3 GAL)**

## DIAGNOSIS

### Recommendation

Resample at the next service interval to monitor.

### Wear

All component wear rates are normal.

### Contamination

There is no indication of any contamination in the oil.

### Fluid Condition

The AN level is acceptable for this fluid. The condition of the oil is suitable for further service.

## SAMPLE INFORMATION

	method	limit/base	current	history1	history2
Sample Number	Client Info		<b>WC0812036</b>	WC0689511	WC0613585
Sample Date	Client Info		<b>25 Aug 2023</b>	15 Aug 2022	10 Sep 2021
Machine Age	hrs	Client Info	<b>0</b>	0	0
Oil Age	hrs	Client Info	<b>0</b>	0	0
Oil Changed	Client Info		<b>N/A</b>	N/A	N/A
Sample Status			<b>NORMAL</b>	NORMAL	NORMAL

## WEAR METALS

	method	limit/base	current	history1	history2
Iron	ppm	ASTM D5185m >60	<b>&lt;1</b>	<1	<1
Chromium	ppm	ASTM D5185m >4	<b>0</b>	0	0
Nickel	ppm	ASTM D5185m	<b>0</b>	0	0
Titanium	ppm	ASTM D5185m	<b>0</b>	0	0
Silver	ppm	ASTM D5185m	<b>0</b>	<1	<1
Aluminum	ppm	ASTM D5185m >5	<b>0</b>	<1	0
Lead	ppm	ASTM D5185m >10	<b>0</b>	<1	0
Copper	ppm	ASTM D5185m >30	<b>&lt;1</b>	<1	<1
Tin	ppm	ASTM D5185m >15	<b>0</b>	1	<1
Antimony	ppm	ASTM D5185m	<b>---</b>	---	0
Vanadium	ppm	ASTM D5185m	<b>0</b>	0	0
Cadmium	ppm	ASTM D5185m	<b>0</b>	0	0

## ADDITIVES

	method	limit/base	current	history1	history2
Boron	ppm	ASTM D5185m	<b>0</b>	1	<1
Barium	ppm	ASTM D5185m	<b>2</b>	0	0
Molybdenum	ppm	ASTM D5185m	<b>0</b>	0	0
Manganese	ppm	ASTM D5185m	<b>0</b>	0	0
Magnesium	ppm	ASTM D5185m	<b>&lt;1</b>	<1	0
Calcium	ppm	ASTM D5185m	<b>0</b>	0	0
Phosphorus	ppm	ASTM D5185m	<b>3</b>	4	2
Zinc	ppm	ASTM D5185m	<b>0</b>	0	0
Sulfur	ppm	ASTM D5185m	<b>0</b>	0	12

## CONTAMINANTS

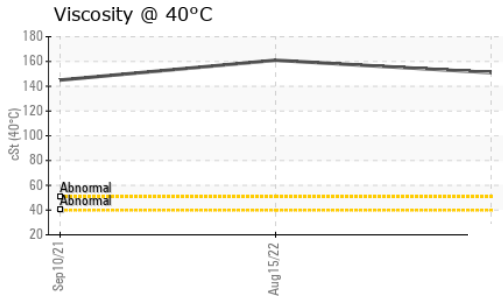
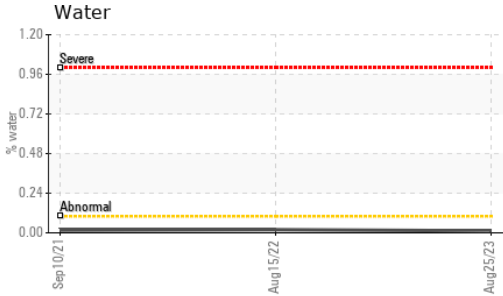
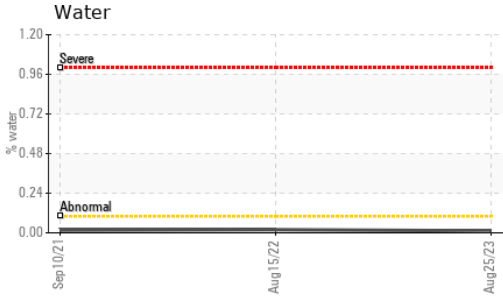
	method	limit/base	current	history1	history2
Silicon	ppm	ASTM D5185m >50	<b>&lt;1</b>	<1	0
Sodium	ppm	ASTM D5185m	<b>0</b>	<1	0
Potassium	ppm	ASTM D5185m >20	<b>&lt;1</b>	0	0
Water	%	ASTM D6304 >0.1	<b>0.012</b>	0.019	0.016
ppm Water	ppm	ASTM D6304 >1000	<b>120.6</b>	193.6	162.3

## FLUID DEGRADATION

	method	limit/base	current	history1	history2
Acid Number (AN)	mg KOH/g	ASTM D8045	<b>0.029</b>	0.042	0.044



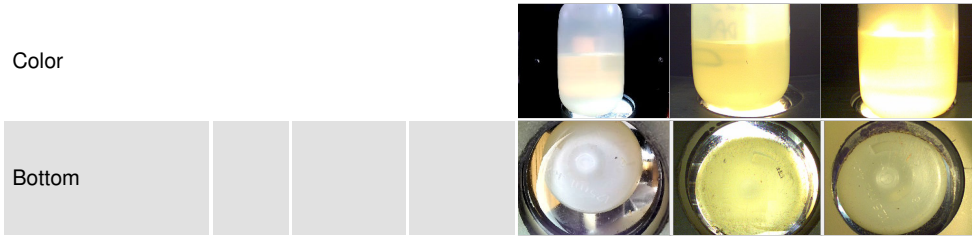
# OIL ANALYSIS REPORT



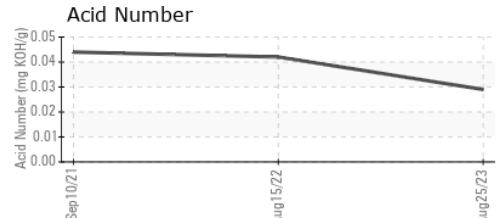
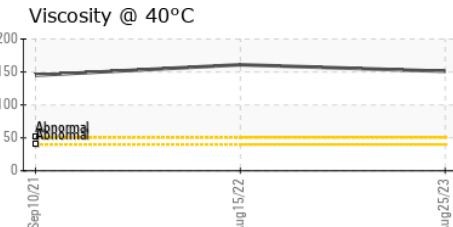
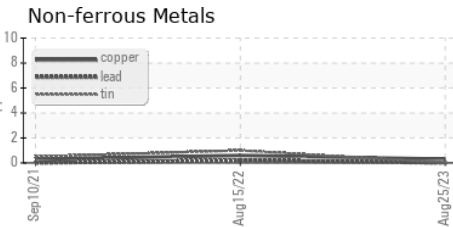
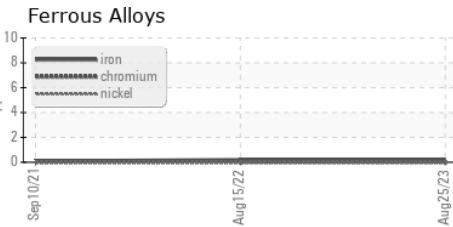
VISUAL	method	limit/base	current	history1	history2
White Metal	scalar	*Visual	NONE	NONE	NONE
Yellow Metal	scalar	*Visual	NONE	NONE	NONE
Precipitate	scalar	*Visual	NONE	NONE	NONE
Silt	scalar	*Visual	NONE	NONE	NONE
Debris	scalar	*Visual	NONE	NONE	NONE
Sand/Dirt	scalar	*Visual	NONE	NONE	NONE
Appearance	scalar	*Visual	NORML	NORML	NORML
Odor	scalar	*Visual	NORML	NORML	NORML
Emulsified Water	scalar	*Visual	>0.1	NEG	NEG
Free Water	scalar	*Visual		NEG	NEG

FLUID PROPERTIES	method	limit/base	current	history1	history2
Visc @ 40°C	cSt	ASTM D445	151	161	145

SAMPLE IMAGES	method	limit/base	current	history1	history2
---------------	--------	------------	---------	----------	----------



## GRAPHS



Certificate L2367

**Laboratory** : WearCheck USA - 501 Madison Ave., Cary, NC 27513  
**Sample No.** : WC0812036 **Received** : 30 Aug 2023  
**Lab Number** : 05939020 **Diagnosed** : 31 Aug 2023  
**Unique Number** : 10629632 **Diagnostician** : Doug Bogart  
**Test Package** : IND 2 ( Additional Tests: KF )

**COMMERCIAL AIR SYSTEMS**  
 10 COUNTY LINE RD  
 BRANCHBURG, NJ  
 US 08876  
 Contact: LARRY DELGUERCIO  
 larry@commairsystems.com  
 T: (908)927-9090  
 F: (908)921-9091

To discuss this sample report, contact Customer Service at 1-800-237-1369.

\* - Denotes test methods that are outside of the ISO 17025 scope of accreditation.

Statements of conformity to specifications are based on the simple acceptance decision rule (JCGM 106:2012)