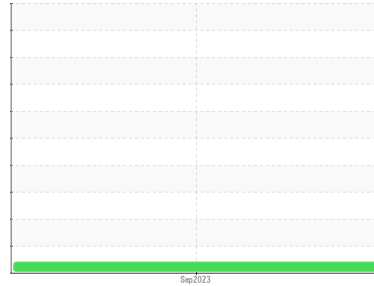




# PROBLEM SUMMARY

Sample Rating Trend



**VIS DEBRIS**



Machine Id  
**1300 EXT 002**

Component  
**Gearbox**

Fluid  
**PETRO CANADA TURBOFLO R&O 150 (4 GAL)**


## COMPONENT CONDITION SUMMARY

No relevant graphs to display

## RECOMMENDATION

We recommend you service the filters on this component. Resample at the next service interval to monitor. We were unable to perform a particle count due to a high concentration of particles present in this sample.

## PROBLEMATIC TEST RESULTS

Sample Status				ABNORMAL	---	---
Debris	scalar	*Visual	NONE	▲ MODER	---	---
PrtFilter					no image	no image

**Customer Id:** APCFRA  
**Sample No.:** PH0001946  
**Lab Number:** 05960582  
**Test Package:** PLANT



To manage this report scan the QR code

To discuss the diagnosis or test data:  
Doug Bogart +1 (800)237-1369 x4016  
[dougb@wearcheckusa.com](mailto:dougb@wearcheckusa.com)

To change component or sample information:  
Customer Service +1 1-800-237-1369  
[customerservice@wearcheck.com](mailto:customerservice@wearcheck.com)

## RECOMMENDED ACTIONS

Action	Status	Date	Done By	Description
Change Filter	---	---	?	We recommend you service the filters on this component.
Alert	---	---	?	We were unable to perform a particle count due to a high concentration of particles present in this sample.

## HISTORICAL DIAGNOSIS



# OIL ANALYSIS REPORT

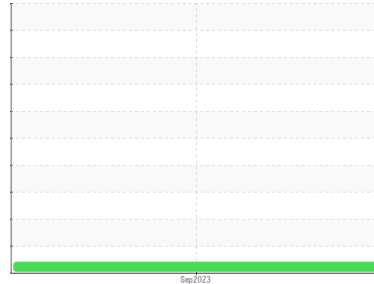
Sample Rating Trend

VIS DEBRIS

Machine Id  
**1300 EXT 002**

Component  
**Gearbox**

Fluid  
**PETRO CANADA TURBOFLO R&O 150 (4 GAL)**



## DIAGNOSIS

### Recommendation

We recommend you service the filters on this component. Resample at the next service interval to monitor. We were unable to perform a particle count due to a high concentration of particles present in this sample.

### Wear

All component wear rates are normal.

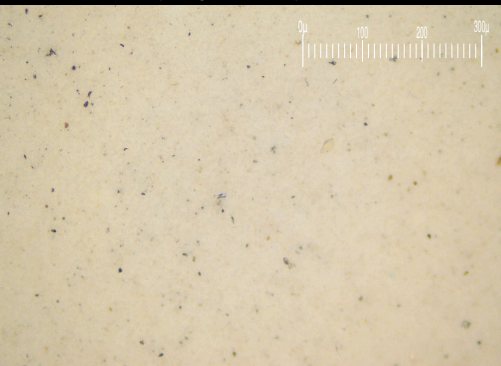
### Contamination

Moderate concentration of visible dirt/debris present in the oil.

### Fluid Condition

The AN level is acceptable for this fluid. The condition of the oil is suitable for further service.

Particle Filter (Magn: 200 x)



## SAMPLE INFORMATION

method	limit/base	current	history1	history2
Sample Number	Client Info	<b>PH0001946</b>	---	---
Sample Date	Client Info	<b>24 Sep 2023</b>	---	---
Machine Age	hrs	Client Info	<b>0</b>	---
Oil Age	hrs	Client Info	<b>0</b>	---
Oil Changed	Client Info	<b>N/A</b>	---	---
Sample Status		<b>ABNORMAL</b>	---	---

## WEAR METALS

method	limit/base	current	history1	history2		
Iron	ppm	ASTM D5185m	>200	<b>4</b>	---	---
Chromium	ppm	ASTM D5185m	>15	<b>0</b>	---	---
Nickel	ppm	ASTM D5185m	>15	<b>0</b>	---	---
Titanium	ppm	ASTM D5185m		<b>0</b>	---	---
Silver	ppm	ASTM D5185m		<b>0</b>	---	---
Aluminum	ppm	ASTM D5185m	>25	<b>0</b>	---	---
Lead	ppm	ASTM D5185m	>100	<b>0</b>	---	---
Copper	ppm	ASTM D5185m	>200	<b>1</b>	---	---
Tin	ppm	ASTM D5185m	>25	<b>&lt;1</b>	---	---
Vanadium	ppm	ASTM D5185m		<b>0</b>	---	---
Cadmium	ppm	ASTM D5185m		<b>0</b>	---	---

## ADDITIVES

method	limit/base	current	history1	history2		
Boron	ppm	ASTM D5185m		<b>0</b>	---	---
Barium	ppm	ASTM D5185m		<b>0</b>	---	---
Molybdenum	ppm	ASTM D5185m		<b>&lt;1</b>	---	---
Manganese	ppm	ASTM D5185m		<b>&lt;1</b>	---	---
Magnesium	ppm	ASTM D5185m		<b>1</b>	---	---
Calcium	ppm	ASTM D5185m	0	<b>5</b>	---	---
Phosphorus	ppm	ASTM D5185m	4	<b>43</b>	---	---
Zinc	ppm	ASTM D5185m	0	<b>3</b>	---	---
Sulfur	ppm	ASTM D5185m		<b>3259</b>	---	---

## CONTAMINANTS

method	limit/base	current	history1	history2		
Silicon	ppm	ASTM D5185m	>50	<b>&lt;1</b>	---	---
Sodium	ppm	ASTM D5185m		<b>3</b>	---	---
Potassium	ppm	ASTM D5185m	>20	<b>1</b>	---	---

## FLUID DEGRADATION

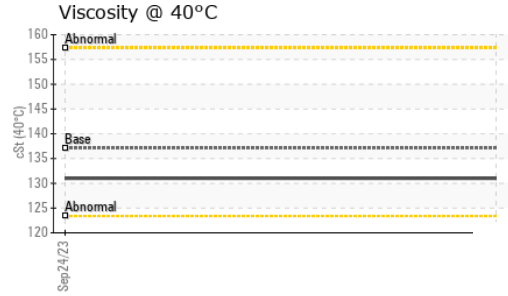
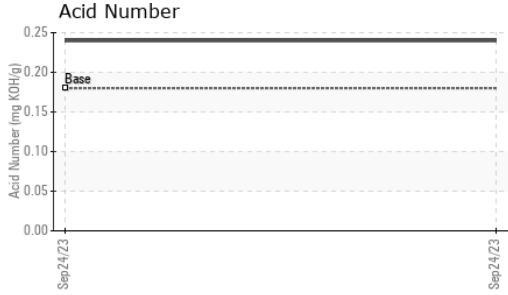
method	limit/base	current	history1	history2		
Acid Number (AN)	mg KOH/g	ASTM D8045	0.18	<b>0.24</b>	---	---

## VISUAL

method	limit/base	current	history1	history2		
White Metal	scalar	*Visual	NONE	<b>NONE</b>	---	---
Yellow Metal	scalar	*Visual	NONE	<b>NONE</b>	---	---
Precipitate	scalar	*Visual	NONE	<b>NONE</b>	---	---
Silt	scalar	*Visual	NONE	<b>NONE</b>	---	---
Debris	scalar	*Visual	NONE	<b>▲ MODER</b>	---	---
Sand/Dirt	scalar	*Visual	NONE	<b>NONE</b>	---	---
Appearance	scalar	*Visual	NORML	<b>NORML</b>	---	---
Odor	scalar	*Visual	NORML	<b>NORML</b>	---	---
Emulsified Water	scalar	*Visual	>0.2	<b>NEG</b>	---	---
Free Water	scalar	*Visual		<b>NEG</b>	---	---



# OIL ANALYSIS REPORT

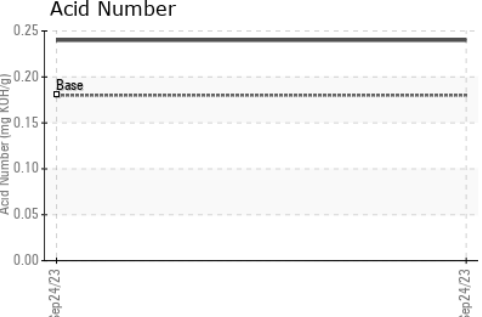
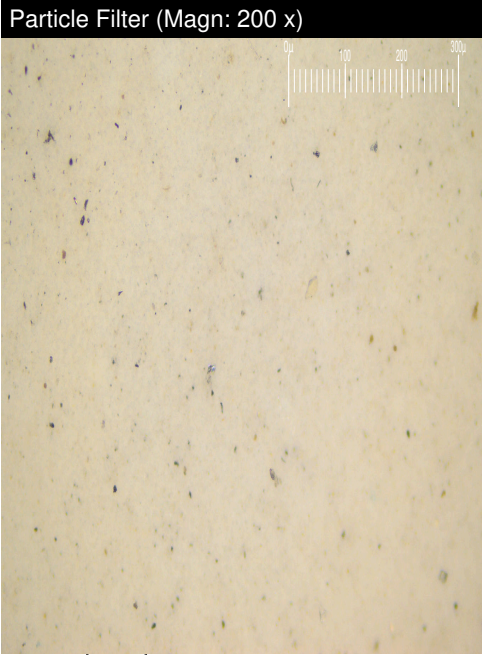
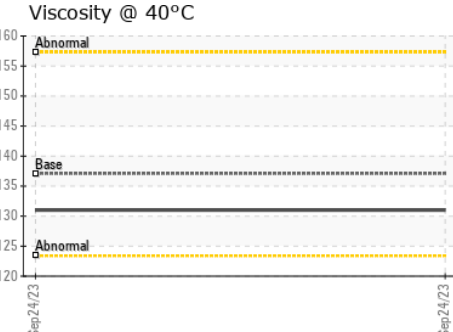
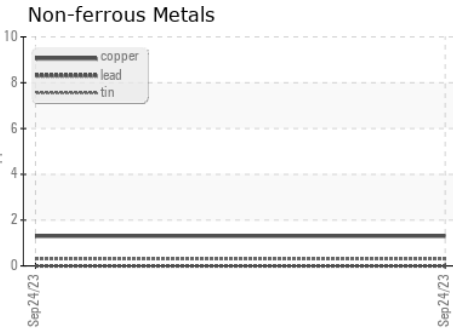
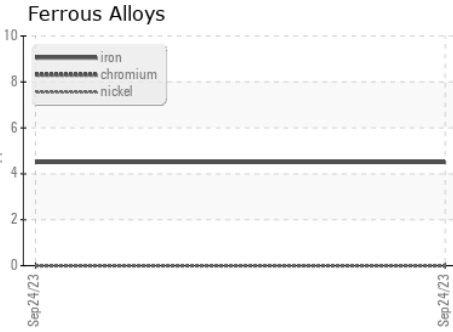


FLUID PROPERTIES	method	limit/base	current	history1	history2	
Visc @ 40°C	cSt	ASTM D445	137.1	<b>131</b>	---	---

SAMPLE IMAGES	method	limit/base	current	history1	history2
---------------	--------	------------	---------	----------	----------

Color				no image	no image
Bottom				no image	no image
PrtFilter				no image	no image

## GRAPHS



Certificate L2367

**Laboratory** : WearCheck USA - 501 Madison Ave., Cary, NC 27513  
**Sample No.** : PH0001946      **Received** : 25 Sep 2023  
**Lab Number** : 05960582      **Diagnosed** : 28 Sep 2023  
**Unique Number** : 10661795      **Diagnostician** : Doug Bogart  
**Test Package** : PLANT ( Additional Tests: PrtFilter )

**APCOM**  
 127 SOUTHEAST PARKWAY  
 FRANKLIN, TN  
 US 37064  
 Contact: Bob Filipovic

To discuss this sample report, contact Customer Service at 1-800-237-1369.

\* - Denotes test methods that are outside of the ISO 17025 scope of accreditation.

Statements of conformity to specifications are based on the simple acceptance decision rule (JCGM 106:2012)

T:  
F: