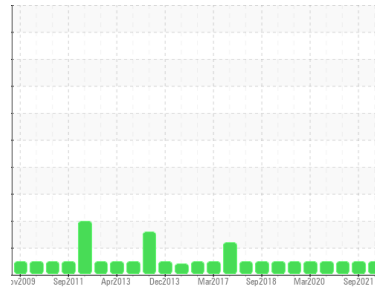




# OIL ANALYSIS REPORT

Sample Rating Trend



**NORMAL**



Machine Id  
**DAVIS STANDARD 22J MAIN EXTRUDER GEARBOX (S/N 784152)**

Component  
**Gearbox**

Fluid  
**CHEVRON MEROPA 150 (17 GAL)**

## DIAGNOSIS

### Recommendation

Resample at the next service interval to monitor.

### Wear

All component wear rates are normal.

### Contamination

There is no indication of any contamination in the oil.

### Fluid Condition

The AN level is acceptable for this fluid. The condition of the oil is suitable for further service.

| SAMPLE INFORMATION |             | method      | limit/base | current            | history1    | history2    |
|--------------------|-------------|-------------|------------|--------------------|-------------|-------------|
| Sample Number      | Client Info |             |            | <b>WC0847219</b>   | WC0608559   | WC0550094   |
| Sample Date        | Client Info |             |            | <b>13 Sep 2023</b> | 08 Sep 2021 | 12 Mar 2021 |
| Machine Age        | mths        | Client Info |            | <b>0</b>           | 0           | 0           |
| Oil Age            | mths        | Client Info |            | <b>0</b>           | 0           | 0           |
| Oil Changed        | Client Info |             |            | <b>N/A</b>         | Not Chngd   | N/A         |
| Sample Status      |             |             |            | <b>NORMAL</b>      | NORMAL      | NORMAL      |

| WEAR METALS |     | method      | limit/base | current      | history1 | history2 |
|-------------|-----|-------------|------------|--------------|----------|----------|
| Iron        | ppm | ASTM D5185m | >200       | <b>12</b>    | 23       | 23       |
| Chromium    | ppm | ASTM D5185m | >15        | <b>0</b>     | <1       | <1       |
| Nickel      | ppm | ASTM D5185m | >15        | <b>0</b>     | <1       | 0        |
| Titanium    | ppm | ASTM D5185m |            | <b>&lt;1</b> | 0        | 0        |
| Silver      | ppm | ASTM D5185m |            | <b>0</b>     | 0        | <1       |
| Aluminum    | ppm | ASTM D5185m | >25        | <b>2</b>     | 0        | 0        |
| Lead        | ppm | ASTM D5185m | >100       | <b>0</b>     | 0        | <1       |
| Copper      | ppm | ASTM D5185m | >200       | <b>2</b>     | 5        | 5        |
| Tin         | ppm | ASTM D5185m | >25        | <b>0</b>     | 0        | 0        |
| Antimony    | ppm | ASTM D5185m | >5         | <b>---</b>   | 3        | 0        |
| Vanadium    | ppm | ASTM D5185m |            | <b>0</b>     | 0        | 0        |
| Cadmium     | ppm | ASTM D5185m |            | <b>0</b>     | <1       | 0        |

| ADDITIVES  |     | method      | limit/base | current      | history1 | history2 |
|------------|-----|-------------|------------|--------------|----------|----------|
| Boron      | ppm | ASTM D5185m |            | <b>0</b>     | 7        | 1        |
| Barium     | ppm | ASTM D5185m |            | <b>0</b>     | 0        | 0        |
| Molybdenum | ppm | ASTM D5185m |            | <b>0</b>     | 0        | 0        |
| Manganese  | ppm | ASTM D5185m |            | <b>&lt;1</b> | <1       | <1       |
| Magnesium  | ppm | ASTM D5185m |            | <b>&lt;1</b> | 0        | 0        |
| Calcium    | ppm | ASTM D5185m |            | <b>4</b>     | 4        | 10       |
| Phosphorus | ppm | ASTM D5185m |            | <b>252</b>   | 252      | 273      |
| Zinc       | ppm | ASTM D5185m |            | <b>0</b>     | 12       | 2        |
| Sulfur     | ppm | ASTM D5185m |            | <b>7639</b>  | 7328     | 7716     |

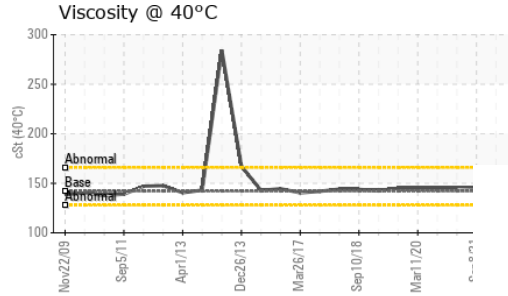
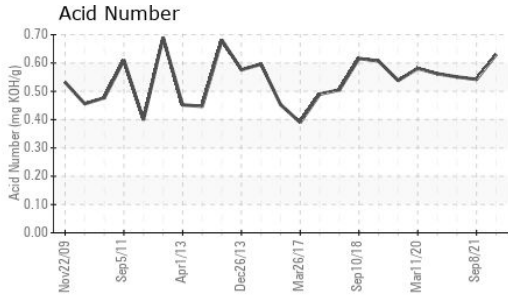
| CONTAMINANTS |     | method      | limit/base | current      | history1 | history2 |
|--------------|-----|-------------|------------|--------------|----------|----------|
| Silicon      | ppm | ASTM D5185m | >50        | <b>&lt;1</b> | 1        | <1       |
| Sodium       | ppm | ASTM D5185m |            | <b>1</b>     | 1        | <1       |
| Potassium    | ppm | ASTM D5185m | >20        | <b>0</b>     | 0        | <1       |

| FLUID DEGRADATION |          | method     | limit/base | current     | history1 | history2 |
|-------------------|----------|------------|------------|-------------|----------|----------|
| Acid Number (AN)  | mg KOH/g | ASTM D8045 |            | <b>0.63</b> | 0.542    | 0.551    |

| VISUAL           |        | method  | limit/base | current      | history1 | history2 |
|------------------|--------|---------|------------|--------------|----------|----------|
| White Metal      | scalar | *Visual | NONE       | <b>NONE</b>  | NONE     | NONE     |
| Yellow Metal     | scalar | *Visual | NONE       | <b>NONE</b>  | NONE     | NONE     |
| Precipitate      | scalar | *Visual | NONE       | <b>NONE</b>  | NONE     | NONE     |
| Silt             | scalar | *Visual | NONE       | <b>NONE</b>  | NONE     | NONE     |
| Debris           | scalar | *Visual | NONE       | <b>NONE</b>  | NONE     | LIGHT    |
| Sand/Dirt        | scalar | *Visual | NONE       | <b>NONE</b>  | NONE     | NONE     |
| Appearance       | scalar | *Visual | NORML      | <b>NORML</b> | NORML    | NORML    |
| Odor             | scalar | *Visual | NORML      | <b>NORML</b> | NORML    | NORML    |
| Emulsified Water | scalar | *Visual | >0.2       | <b>NEG</b>   | NEG      | NEG      |
| Free Water       | scalar | *Visual |            | <b>NEG</b>   | MARK     | MARK     |

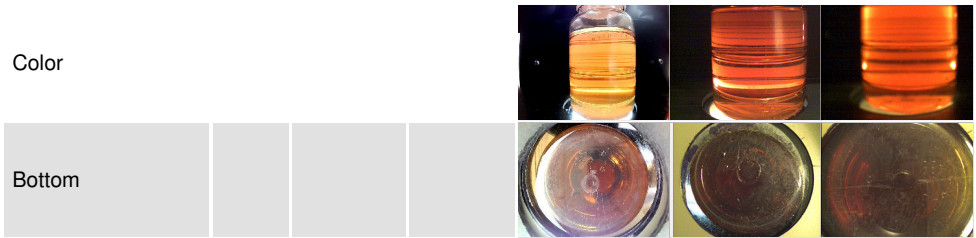


# OIL ANALYSIS REPORT

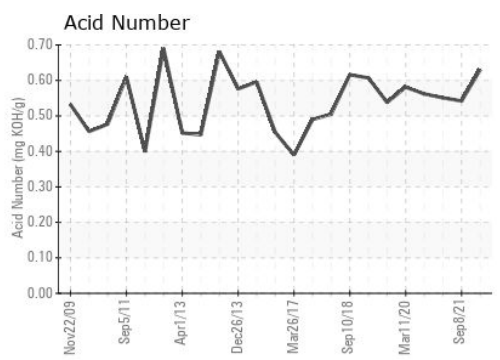
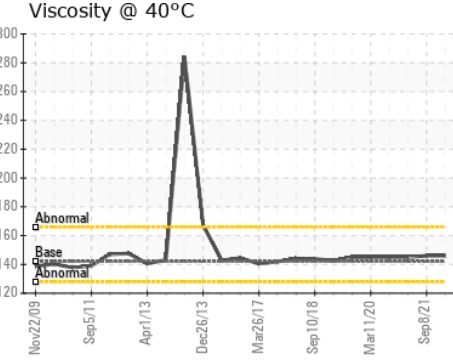
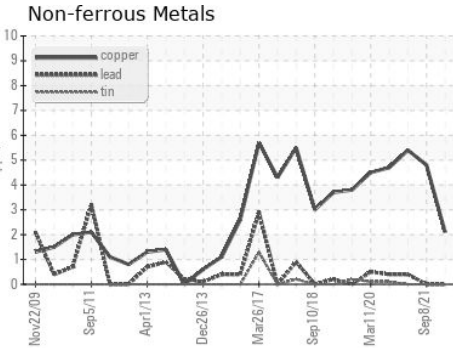
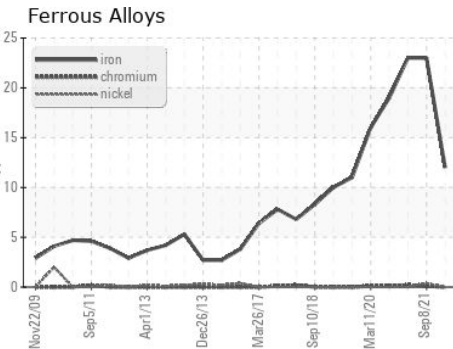


| FLUID PROPERTIES |     | method    | limit/base | current    | history1 | history2 |
|------------------|-----|-----------|------------|------------|----------|----------|
| Visc @ 40°C      | cSt | ASTM D445 | 142        | <b>146</b> | 146      | 145      |

| SAMPLE IMAGES |  | method | limit/base | current | history1 | history2 |
|---------------|--|--------|------------|---------|----------|----------|
|---------------|--|--------|------------|---------|----------|----------|



## GRAPHS



**Laboratory** : WearCheck USA - 501 Madison Ave., Cary, NC 27513  
**Sample No.** : WC0847219      **Received** : 28 Sep 2023  
**Lab Number** : 05964265      **Diagnosed** : 29 Sep 2023  
**Unique Number** : 10670816      **Diagnostician** : Wes Davis  
**Test Package** : IND 2

**3M - BROOKINGS**  
 PO BOX 5227  
 BROOKINGS, SD  
 US 57006  
 Contact: MARK DYKHOUSE  
 mrdykhouse@mmm.com  
 T: (605)696-1465  
 F: (605)696-1679

Certificate L2367  
 To discuss this sample report, contact Customer Service at 1-800-237-1369.  
 \* - Denotes test methods that are outside of the ISO 17025 scope of accreditation.  
 Statements of conformity to specifications are based on the simple acceptance decision rule (JCGM 106:2012)