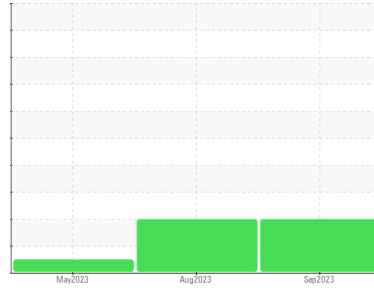




PROBLEM SUMMARY

Sample Rating Trend



ISO



Machine Id

E-1 E-1

Component

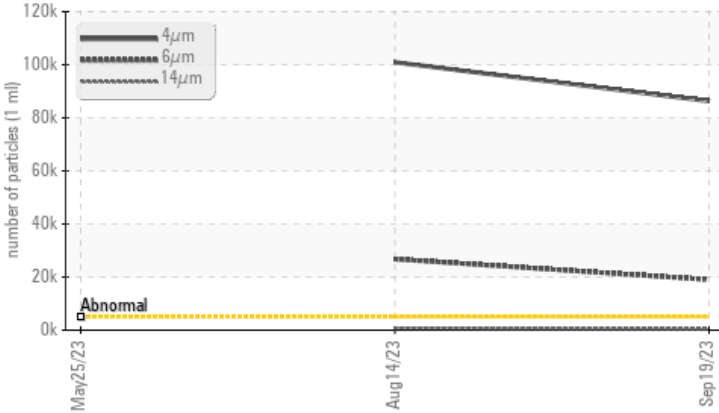
Lube System

Fluid

MOBIL DTE OIL EXTRA HEAVY (--- GAL)

COMPONENT CONDITION SUMMARY

▲ Particle Trend



RECOMMENDATION

We recommend you service the filters on this component. Resample at the next service interval to monitor.

PROBLEMATIC TEST RESULTS

Sample Status	ASTM D7647	ASTM D7647	ABNORMAL	ABNORMAL	NORMAL
Particles >4µm	ASTM D7647	>5000	▲ 86315	▲ 100917	---
Particles >6µm	ASTM D7647	>1300	▲ 19021	▲ 26765	---
Particles >14µm	ASTM D7647	>160	▲ 329	▲ 772	---
Particles >21µm	ASTM D7647	>40	▲ 57	▲ 130	---
Oil Cleanliness	ISO 4406 (c)	>19/17/14	▲ 24/21/16	▲ 24/22/17	---

Customer Id: TESAUSTLC

Sample No.: TLC05964588

Lab Number: 05964588

Test Package: PLANT



To manage this report scan the QR code

To discuss the diagnosis or test data:

Don Baldrige +1

don.b505@comcast.net

To change component or sample information:

Customer Service +1 1-800-237-1369

customerservice@wearcheck.com

RECOMMENDED ACTIONS

Action	Status	Date	Done By	Description
Change Filter	---	---	?	We recommend you service the filters on this component.

HISTORICAL DIAGNOSIS

14 Aug 2023 Diag: Doug Bogart

ISO



We recommend you service the filters on this component. Resample at the next service interval to monitor. All component wear rates are normal. There is a high amount of particulates present in the oil. The AN level is acceptable for this fluid. The condition of the oil is suitable for further service.

view report



25 May 2023 Diag: Jonathan Hester

NORMAL



Resample at the next service interval to monitor. All component wear rates are normal. There is no indication of any contamination in the oil. The AN level is acceptable for this fluid. The condition of the oil is suitable for further service.

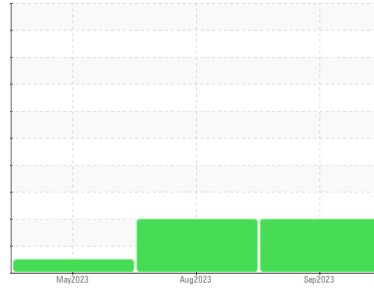
view report





OIL ANALYSIS REPORT

Sample Rating Trend



ISO



Machine Id

E-1 E-1

Component

Lube System

Fluid

MOBIL DTE OIL EXTRA HEAVY (--- GAL)

DIAGNOSIS

▲ Recommendation

We recommend you service the filters on this component. Resample at the next service interval to monitor.

Wear

All component wear rates are normal.

▲ Contamination

There is a high amount of particulates present in the oil.

Fluid Condition

The AN level is acceptable for this fluid. The condition of the oil is suitable for further service.

SAMPLE INFORMATION

method	limit/base	current	history1	history2
Sample Number	Client Info	TLC05964588	TLC0000998	TLC0001161
Sample Date	Client Info	19 Sep 2023	14 Aug 2023	25 May 2023
Machine Age	hrs	Client Info	0	0
Oil Age	hrs	Client Info	0	0
Oil Changed	Client Info	N/A	N/A	N/A
Sample Status		ABNORMAL	ABNORMAL	NORMAL

WEAR METALS

method	limit/base	current	history1	history2	
Iron	ppm	ASTM D5185m >20	0	1	1
Chromium	ppm	ASTM D5185m >20	0	0	0
Nickel	ppm	ASTM D5185m >20	0	0	0
Titanium	ppm	ASTM D5185m	0	0	0
Silver	ppm	ASTM D5185m	0	0	0
Aluminum	ppm	ASTM D5185m >20	0	0	0
Lead	ppm	ASTM D5185m >20	1	0	2
Copper	ppm	ASTM D5185m >20	5	3	3
Tin	ppm	ASTM D5185m >20	0	0	0
Vanadium	ppm	ASTM D5185m	0	0	0
Cadmium	ppm	ASTM D5185m	0	0	0

ADDITIVES

method	limit/base	current	history1	history2	
Boron	ppm	ASTM D5185m	0	0	0
Barium	ppm	ASTM D5185m	<1	0	2
Molybdenum	ppm	ASTM D5185m	0	0	0
Manganese	ppm	ASTM D5185m	0	0	0
Magnesium	ppm	ASTM D5185m	4	1	<1
Calcium	ppm	ASTM D5185m	108	103	1
Phosphorus	ppm	ASTM D5185m	415	399	24
Zinc	ppm	ASTM D5185m	538	506	2
Sulfur	ppm	ASTM D5185m	9453	10771	3763

CONTAMINANTS

method	limit/base	current	history1	history2	
Silicon	ppm	ASTM D5185m >15	8	7	11
Sodium	ppm	ASTM D5185m	<1	<1	0
Potassium	ppm	ASTM D5185m >20	0	0	<1

FLUID CLEANLINESS

method	limit/base	current	history1	history2
Particles >4µm	ASTM D7647 >5000	▲ 86315	▲ 100917	---
Particles >6µm	ASTM D7647 >1300	▲ 19021	▲ 26765	---
Particles >14µm	ASTM D7647 >160	▲ 329	▲ 772	---
Particles >21µm	ASTM D7647 >40	▲ 57	▲ 130	---
Particles >38µm	ASTM D7647 >10	4	4	---
Particles >71µm	ASTM D7647 >3	1	1	---
Oil Cleanliness	ISO 4406 (c) >19/17/14	▲ 24/21/16	▲ 24/22/17	---

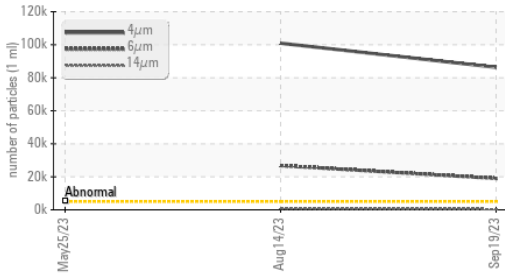
FLUID DEGRADATION

method	limit/base	current	history1	history2	
Acid Number (AN)	mg KOH/g	ASTM D8045	0.75	0.81	0.077

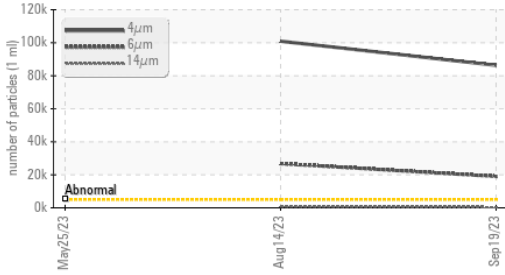


OIL ANALYSIS REPORT

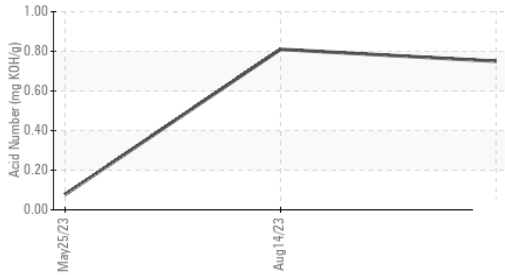
Particle Trend



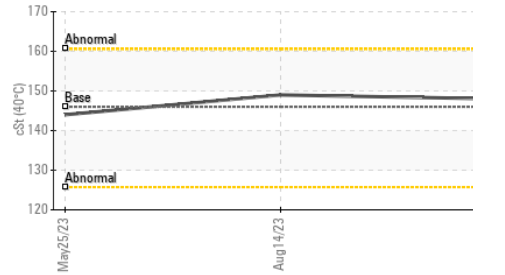
Particle Trend



Acid Number



Viscosity @ 40°C

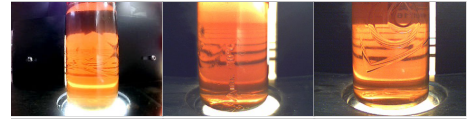


VISUAL	method	limit/base	current	history1	history2
White Metal	scalar	*Visual	NONE	NONE	LIGHT
Yellow Metal	scalar	*Visual	NONE	NONE	NONE
Precipitate	scalar	*Visual	NONE	NONE	NONE
Silt	scalar	*Visual	NONE	NONE	NONE
Debris	scalar	*Visual	NONE	LIGHT	LIGHT
Sand/Dirt	scalar	*Visual	NONE	NONE	NONE
Appearance	scalar	*Visual	NORML	NORML	NORML
Odor	scalar	*Visual	NORML	NORML	NORML
Emulsified Water	scalar	*Visual	>0.05	NEG	NEG
Free Water	scalar	*Visual		NEG	NEG

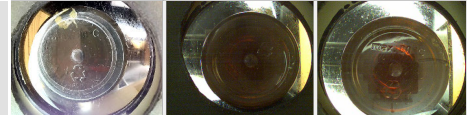
FLUID PROPERTIES	method	limit/base	current	history1	history2
Visc @ 40°C	cSt	ASTM D445	146	149	144

SAMPLE IMAGES	method	limit/base	current	history1	history2
---------------	--------	------------	---------	----------	----------

Color

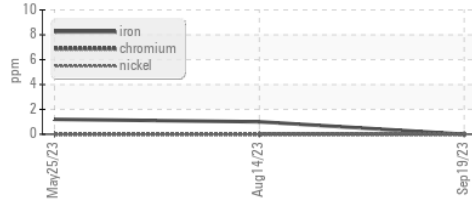


Bottom

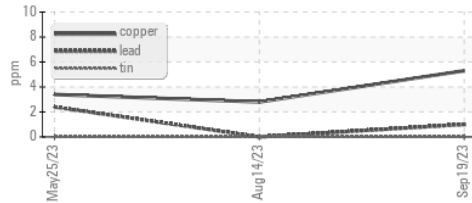


GRAPHS

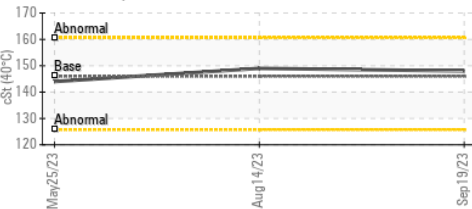
Ferrous Alloys



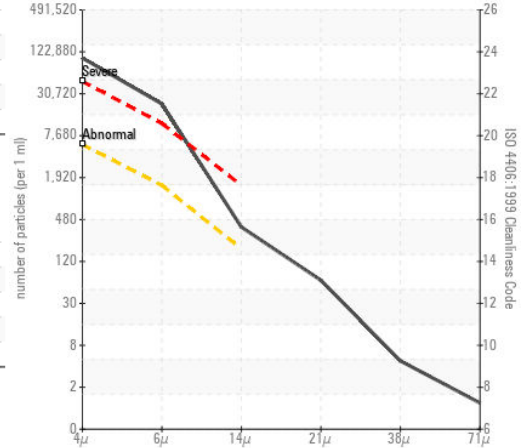
Non-ferrous Metals



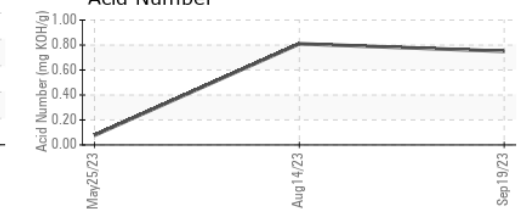
Viscosity @ 40°C



Particle Count



Acid Number



Certificate L2367

Laboratory : WearCheck USA - 501 Madison Ave., Cary, NC 27513
 Sample No. : TLC05964588 Received : 29 Sep 2023
 Lab Number : 05964588 Diagnosed : 02 Oct 2023
 Unique Number : 10671139 Diagnostician : Don Baldrige
 Test Package : PLANT

To discuss this sample report, contact Customer Service at 1-800-237-1369.

* - Denotes test methods that are outside of the ISO 17025 scope of accreditation.

Statements of conformity to specifications are based on the simple acceptance decision rule (JCGM 106:2012)

TESLA
 1 Tesla Road, BIW E58
 Austin, TX
 US 78725
 Contact: Dave Mitchell
 davmitchell@tesla.com
 T: (260)226-1968
 F: