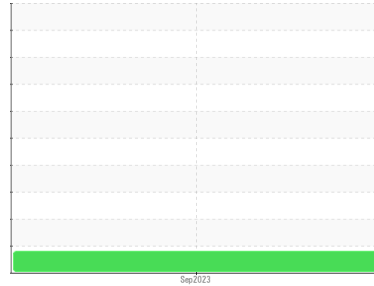




PROBLEM SUMMARY

Sample Rating Trend

ISO



Machine Id
302 E EXT
 Component
Gearbox
 Fluid
NOT GIVEN (--- GAL)

COMPONENT CONDITION SUMMARY

▲ Particle Trend



RECOMMENDATION

No corrective action is recommended at this time.
 Resample at the next service interval to monitor.
 Please specify the brand, type, and viscosity of the oil on your next sample.

PROBLEMATIC TEST RESULTS

Sample Status				ATTENTION	---	---
Particles >4µm	ASTM D7647	>20000	▲ 23365	---	---	---
Oil Cleanliness	ISO 4406 (c)	>21/19/16	▲ 22/19/14	---	---	---
PrtFilter					no image	no image

Customer Id: PLAADR
 Sample No.: PH0001269
 Lab Number: 05965368
 Test Package: PLANT



To manage this report scan the QR code

To discuss the diagnosis or test data:
 Jonathan Hester +1 919-379-4092 x4092
jhester@wearcheckusa.com

To change component or sample information:
 Customer Service +1 1-800-237-1369
customerservice@wearcheck.com

RECOMMENDED ACTIONS

Action	Status	Date	Done By	Description
Information Required	---	---	?	Please specify the brand, type, and viscosity of the oil on your next sample.

HISTORICAL DIAGNOSIS



OIL ANALYSIS REPORT

Sample Rating Trend



ISO



Machine Id
302 E EXT

Component

Gearbox

Fluid

NOT GIVEN (--- GAL)

DIAGNOSIS

▲ Recommendation

No corrective action is recommended at this time. Resample at the next service interval to monitor. Please specify the brand, type, and viscosity of the oil on your next sample.

Wear

All component wear rates are normal.

▲ Contamination

There is a moderate amount of silt (particulates < 6 microns in size) present in the oil.

Fluid Condition

The AN level is acceptable for this fluid. The condition of the oil is suitable for further service.

SAMPLE INFORMATION

method	limit/base	current	history1	history2
Sample Number	Client Info	PH0001269	---	---
Sample Date	Client Info	27 Sep 2023	---	---
Machine Age	hrs	Client Info	0	---
Oil Age	hrs	Client Info	0	---
Oil Changed	Client Info	N/A	---	---
Sample Status		ATTENTION	---	---

WEAR METALS

method	limit/base	current	history1	history2
Iron	ppm	ASTM D5185m >200	4	---
Chromium	ppm	ASTM D5185m >15	0	---
Nickel	ppm	ASTM D5185m >15	0	---
Titanium	ppm	ASTM D5185m	0	---
Silver	ppm	ASTM D5185m	0	---
Aluminum	ppm	ASTM D5185m >25	<1	---
Lead	ppm	ASTM D5185m >100	0	---
Copper	ppm	ASTM D5185m >200	<1	---
Tin	ppm	ASTM D5185m >25	0	---
Vanadium	ppm	ASTM D5185m	0	---
Cadmium	ppm	ASTM D5185m	0	---

ADDITIVES

method	limit/base	current	history1	history2
Boron	ppm	ASTM D5185m	34	---
Barium	ppm	ASTM D5185m	0	---
Molybdenum	ppm	ASTM D5185m	0	---
Manganese	ppm	ASTM D5185m	0	---
Magnesium	ppm	ASTM D5185m	2	---
Calcium	ppm	ASTM D5185m	4	---
Phosphorus	ppm	ASTM D5185m	257	---
Zinc	ppm	ASTM D5185m	0	---
Sulfur	ppm	ASTM D5185m	7525	---

CONTAMINANTS

method	limit/base	current	history1	history2
Silicon	ppm	ASTM D5185m >50	1	---
Sodium	ppm	ASTM D5185m	0	---
Potassium	ppm	ASTM D5185m >20	0	---

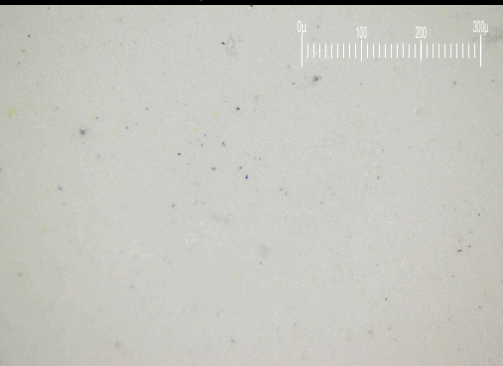
FLUID CLEANLINESS

method	limit/base	current	history1	history2
Particles >4µm	ASTM D7647 >20000	▲ 23365	---	---
Particles >6µm	ASTM D7647 >5000	3622	---	---
Particles >14µm	ASTM D7647 >640	111	---	---
Particles >21µm	ASTM D7647 >160	18	---	---
Particles >38µm	ASTM D7647 >40	0	---	---
Particles >71µm	ASTM D7647 >10	0	---	---
Oil Cleanliness	ISO 4406 (c) >21/19/16	▲ 22/19/14	---	---

FLUID DEGRADATION

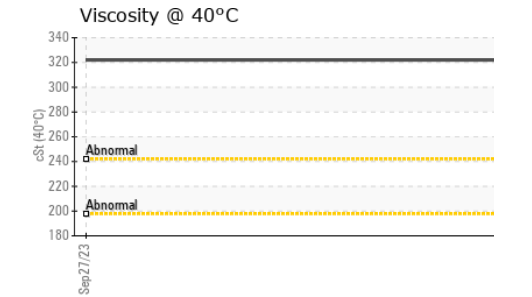
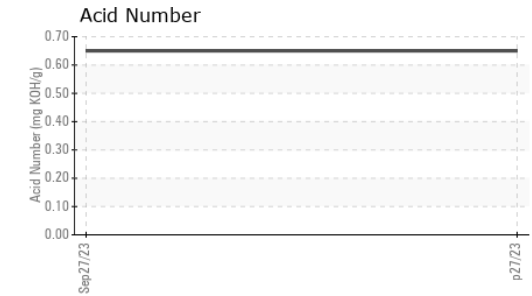
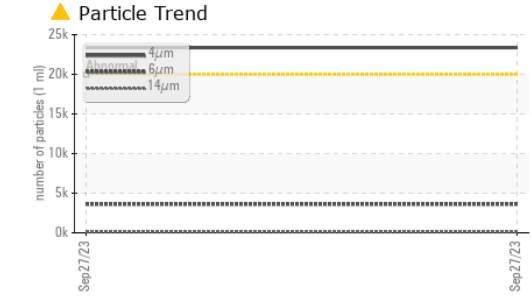
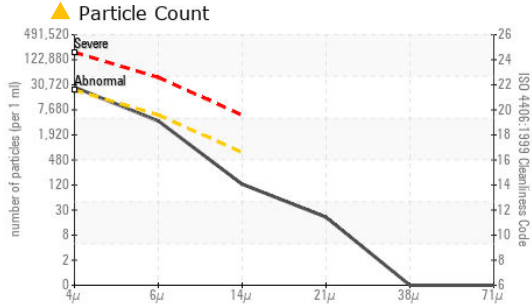
method	limit/base	current	history1	history2
Acid Number (AN)	mg KOH/g	ASTM D8045	0.65	---

Particle Filter (Magn: 200 x)





OIL ANALYSIS REPORT



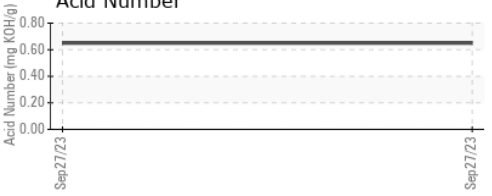
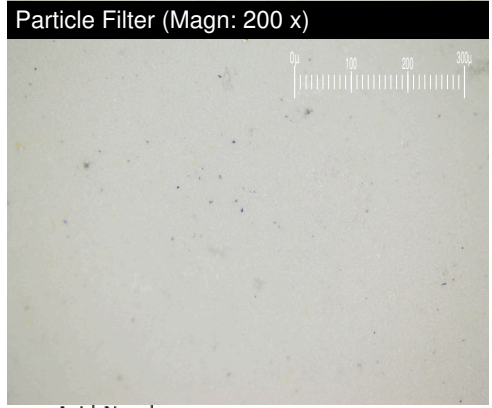
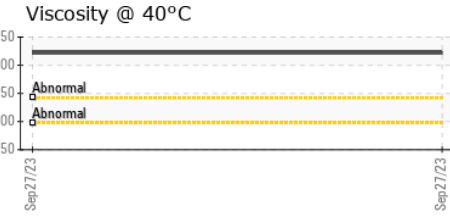
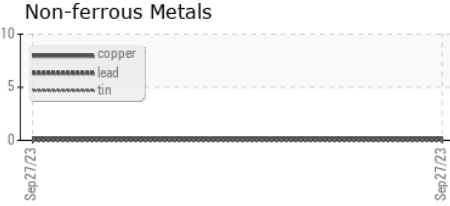
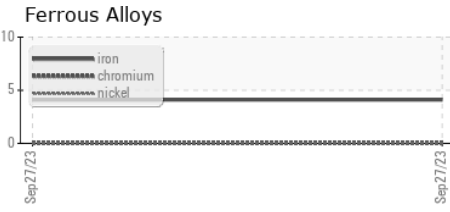
VISUAL	method	limit/base	current	history1	history2
White Metal	scalar	*Visual	NONE	NONE	---
Yellow Metal	scalar	*Visual	NONE	NONE	---
Precipitate	scalar	*Visual	NONE	NONE	---
Silt	scalar	*Visual	NONE	NONE	---
Debris	scalar	*Visual	NONE	NONE	---
Sand/Dirt	scalar	*Visual	NONE	NONE	---
Appearance	scalar	*Visual	NORML	NORML	---
Odor	scalar	*Visual	NORML	NORML	---
Emulsified Water	scalar	*Visual	>0.2	NEG	---
Free Water	scalar	*Visual		NEG	---

FLUID PROPERTIES	method	limit/base	current	history1	history2
Visc @ 40°C	cSt	ASTM D445	322	---	---

SAMPLE IMAGES	method	limit/base	current	history1	history2
---------------	--------	------------	---------	----------	----------

Color				no image	no image
Bottom				no image	no image
PrtFilter				no image	no image

GRAPHS



Laboratory : WearCheck USA - 501 Madison Ave., Cary, NC 27513
Sample No. : PH0001269 **Received** : 29 Sep 2023
Lab Number : 05965368 **Diagnosed** : 04 Oct 2023
Unique Number : 10671919 **Diagnostician** : Jonathan Hester
Test Package : PLANT (Additional Tests: PrtFilter)

PLASTIC OMNIUM
 1549 W BEECHER RD
 ADRIAN, MI
 US 49221
 Contact: Service Manager

To discuss this sample report, contact Customer Service at 1-800-237-1369.
 * - Denotes test methods that are outside of the ISO 17025 scope of accreditation.
 Statements of conformity to specifications are based on the simple acceptance decision rule (JCGM 106:2012)

T:
F: