



PROBLEM SUMMARY

Machine Id
302 C EXT
Component
Gearbox
Fluid
NOT GIVEN (--- GAL)

Sample Rating Trend

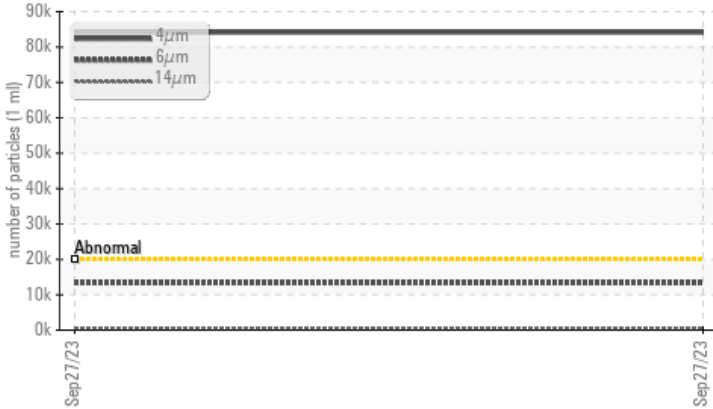


ISO



COMPONENT CONDITION SUMMARY


▲ Particle Trend



RECOMMENDATION

We recommend you service the filters on this component if applicable. Resample at the next service interval to monitor. Please specify the brand, type, and viscosity of the oil on your next sample.

PROBLEMATIC TEST RESULTS

Sample Status			ABNORMAL	---	---
Particles >4µm	ASTM D7647	>20000	▲ 84137	---	---
Particles >6µm	ASTM D7647	>5000	▲ 13340	---	---
Oil Cleanliness	ISO 4406 (c)	>21/19/16	▲ 24/21/16	---	---
PrtFilter				no image	no image

Customer Id: PLAADR
Sample No.: PH0001270
Lab Number: 05965370
Test Package: PLANT



To manage this report scan the QR code

To discuss the diagnosis or test data:
Jonathan Hester +1 919-379-4092 x4092
jhester@wearcheckusa.com

To change component or sample information:
Customer Service +1 1-800-237-1369
customerservice@wearcheck.com

RECOMMENDED ACTIONS

Action	Status	Date	Done By	Description
Change Filter	---	---	?	We recommend you service the filters on this component if applicable.
Information Required	---	---	?	Please specify the brand, type, and viscosity of the oil on your next sample.

HISTORICAL DIAGNOSIS



OIL ANALYSIS REPORT

Sample Rating Trend



ISO

Machine Id
302 C EXT
 Component
Gearbox
 Fluid
NOT GIVEN (--- GAL)

DIAGNOSIS

▲ Recommendation

We recommend you service the filters on this component if applicable. Resample at the next service interval to monitor. Please specify the brand, type, and viscosity of the oil on your next sample.

Wear

All component wear rates are normal.

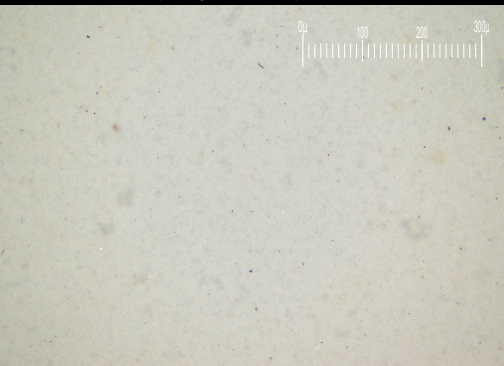
▲ Contamination

There is a high amount of silt (particulates < 14 microns in size) present in the oil.

Fluid Condition

The AN level is acceptable for this fluid. The condition of the oil is suitable for further service.

Particle Filter (Magn: 200 x)



SAMPLE INFORMATION

method	limit/base	current	history1	history2
Sample Number	Client Info	PH0001270	---	---
Sample Date	Client Info	27 Sep 2023	---	---
Machine Age	hrs Client Info	0	---	---
Oil Age	hrs Client Info	0	---	---
Oil Changed	Client Info	N/A	---	---
Sample Status		ABNORMAL	---	---

WEAR METALS

method	limit/base	current	history1	history2
Iron ppm	ASTM D5185m >200	<1	---	---
Chromium ppm	ASTM D5185m >15	0	---	---
Nickel ppm	ASTM D5185m >15	0	---	---
Titanium ppm	ASTM D5185m	0	---	---
Silver ppm	ASTM D5185m	0	---	---
Aluminum ppm	ASTM D5185m >25	<1	---	---
Lead ppm	ASTM D5185m >100	0	---	---
Copper ppm	ASTM D5185m >200	0	---	---
Tin ppm	ASTM D5185m >25	0	---	---
Vanadium ppm	ASTM D5185m	0	---	---
Cadmium ppm	ASTM D5185m	0	---	---

ADDITIVES

method	limit/base	current	history1	history2
Boron ppm	ASTM D5185m	22	---	---
Barium ppm	ASTM D5185m	0	---	---
Molybdenum ppm	ASTM D5185m	0	---	---
Manganese ppm	ASTM D5185m	0	---	---
Magnesium ppm	ASTM D5185m	2	---	---
Calcium ppm	ASTM D5185m	12	---	---
Phosphorus ppm	ASTM D5185m	258	---	---
Zinc ppm	ASTM D5185m	0	---	---
Sulfur ppm	ASTM D5185m	7487	---	---

CONTAMINANTS

method	limit/base	current	history1	history2
Silicon ppm	ASTM D5185m >50	<1	---	---
Sodium ppm	ASTM D5185m	0	---	---
Potassium ppm	ASTM D5185m >20	0	---	---

FLUID CLEANLINESS

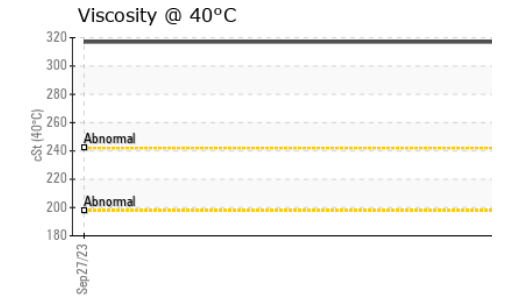
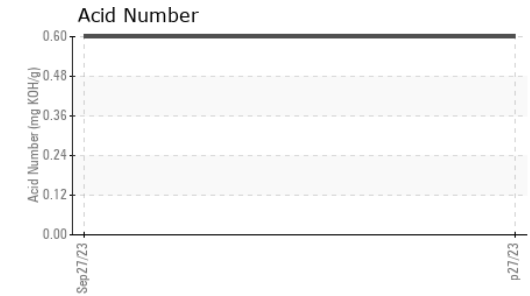
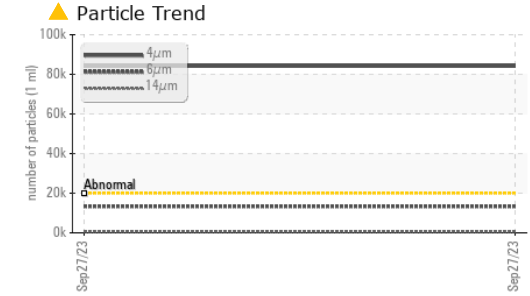
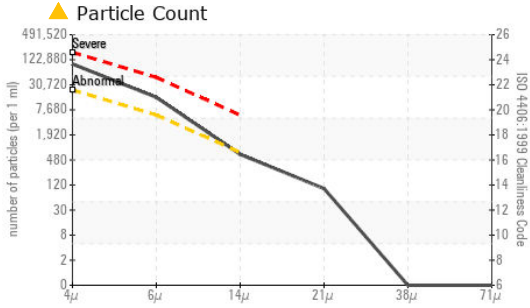
method	limit/base	current	history1	history2
Particles >4µm	ASTM D7647 >20000	▲ 84137	---	---
Particles >6µm	ASTM D7647 >5000	▲ 13340	---	---
Particles >14µm	ASTM D7647 >640	575	---	---
Particles >21µm	ASTM D7647 >160	87	---	---
Particles >38µm	ASTM D7647 >40	0	---	---
Particles >71µm	ASTM D7647 >10	0	---	---
Oil Cleanliness	ISO 4406 (c) >21/19/16	▲ 24/21/16	---	---

FLUID DEGRADATION

method	limit/base	current	history1	history2
Acid Number (AN) mg KOH/g	ASTM D8045	0.60	---	---



OIL ANALYSIS REPORT





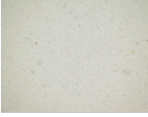
Laboratory : WearCheck USA - 501 Madison Ave., Cary, NC 27513
Sample No. : PH0001270 **Received** : 29 Sep 2023
Lab Number : 05965370 **Diagnosed** : 04 Oct 2023
Unique Number : 10671921 **Diagnostician** : Jonathan Hester
Test Package : PLANT (Additional Tests: PrtFilter)

PLASTIC OMNIUM
 1549 W BEECHER RD
 ADRIAN, MI
 US 49221
 Contact: Service Manager

To discuss this sample report, contact Customer Service at 1-800-237-1369.
 * - Denotes test methods that are outside of the ISO 17025 scope of accreditation.
 Statements of conformity to specifications are based on the simple acceptance decision rule (JCGM 106:2012)

VISUAL	method	limit/base	current	history1	history2	
White Metal	scalar	*Visual	NONE	NONE	---	---
Yellow Metal	scalar	*Visual	NONE	NONE	---	---
Precipitate	scalar	*Visual	NONE	NONE	---	---
Silt	scalar	*Visual	NONE	NONE	---	---
Debris	scalar	*Visual	NONE	NONE	---	---
Sand/Dirt	scalar	*Visual	NONE	NONE	---	---
Appearance	scalar	*Visual	NORML	NORML	---	---
Odor	scalar	*Visual	NORML	NORML	---	---
Emulsified Water	scalar	*Visual	>0.2	NEG	---	---
Free Water	scalar	*Visual		NEG	---	---

FLUID PROPERTIES	method	limit/base	current	history1	history2
Visc @ 40°C	cSt	ASTM D445	317	---	---

SAMPLE IMAGES	method	limit/base	current	history1	history2
Color				no image	no image
Bottom				no image	no image
PrtFilter				no image	no image

GRAPHS

