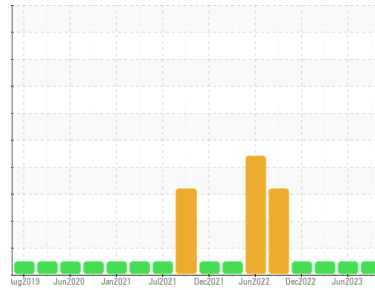




# OIL ANALYSIS REPORT

Sample Rating Trend



**NORMAL**



Machine Id  
**WLLR\_U2120 WLLR\_U2120\_M2120**

Component  
**Drive End Bearing**

Fluid  
**ROYAL PURPLE SYNFILM GT 32 (--- GAL)**

## DIAGNOSIS

### Recommendation

Resample at the next service interval to monitor.

### Wear

All component wear rates are normal.

### Contamination

The water content is negligible. There is no indication of any contamination in the oil.

### Fluid Condition

The AN level is acceptable for this fluid. The condition of the oil is suitable for further service.

SAMPLE INFORMATION		method	limit/base	current	history1	history2
Sample Number	Client Info			<b>RP0029147</b>	RP0029131	RP0020839
Sample Date	Client Info			<b>28 Sep 2023</b>	14 Jun 2023	22 Mar 2023
Machine Age	hrs	Client Info		<b>0</b>	0	0
Oil Age	hrs	Client Info		<b>0</b>	0	0
Oil Changed	Client Info			<b>N/A</b>	N/A	N/A
Sample Status				<b>NORMAL</b>	NORMAL	NORMAL

WEAR METALS		method	limit/base	current	history1	history2
Iron	ppm	ASTM D5185m	>20	<b>0</b>	<1	0
Chromium	ppm	ASTM D5185m	>20	<b>0</b>	0	0
Nickel	ppm	ASTM D5185m	>20	<b>0</b>	<1	0
Titanium	ppm	ASTM D5185m		<b>0</b>	0	0
Silver	ppm	ASTM D5185m		<b>0</b>	0	0
Aluminum	ppm	ASTM D5185m	>20	<b>2</b>	1	<1
Lead	ppm	ASTM D5185m	>20	<b>0</b>	<1	0
Copper	ppm	ASTM D5185m	>20	<b>&lt;1</b>	0	<1
Tin	ppm	ASTM D5185m	>20	<b>&lt;1</b>	<1	<1
Vanadium	ppm	ASTM D5185m		<b>0</b>	0	<1
Cadmium	ppm	ASTM D5185m		<b>&lt;1</b>	0	0

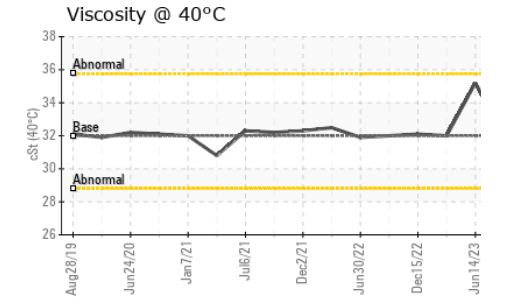
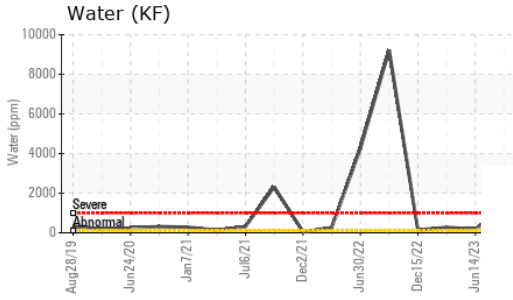
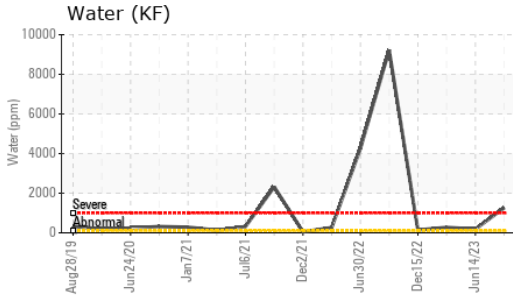
ADDITIVES		method	limit/base	current	history1	history2
Boron	ppm	ASTM D5185m		<b>0</b>	0	0
Barium	ppm	ASTM D5185m		<b>0</b>	0	0
Molybdenum	ppm	ASTM D5185m		<b>0</b>	0	0
Manganese	ppm	ASTM D5185m		<b>&lt;1</b>	<1	<1
Magnesium	ppm	ASTM D5185m		<b>41</b>	84	81
Calcium	ppm	ASTM D5185m		<b>4</b>	1	<1
Phosphorus	ppm	ASTM D5185m		<b>4</b>	2	8
Zinc	ppm	ASTM D5185m		<b>8</b>	0	0

CONTAMINANTS		method	limit/base	current	history1	history2
Silicon	ppm	ASTM D5185m	>15	<b>&lt;1</b>	<1	1
Sodium	ppm	ASTM D5185m		<b>1</b>	1	0
Potassium	ppm	ASTM D5185m	>20	<b>&lt;1</b>	2	4
Water	%	ASTM D6304	>2	<b>0.126</b>	0.018	0.027
ppm Water	ppm	ASTM D6304		<b>1260</b>	186.4	275.8

FLUID DEGRADATION		method	limit/base	current	history1	history2
Acid Number (AN)	mg KOH/g	ASTM D8045		<b>0.33</b>	0.41	0.36

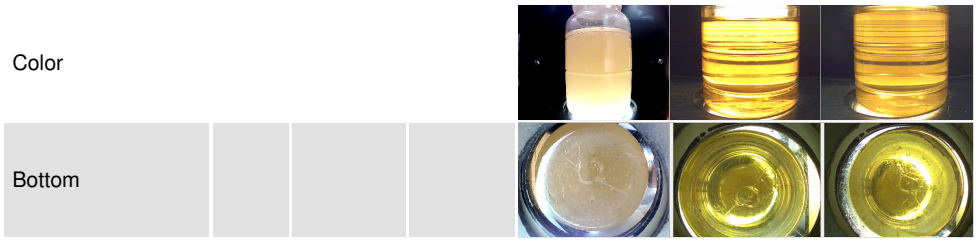
VISUAL		method	limit/base	current	history1	history2
White Metal	scalar	*Visual	NONE	<b>NONE</b>	NONE	NONE
Yellow Metal	scalar	*Visual	NONE	<b>NONE</b>	NONE	NONE
Precipitate	scalar	*Visual	NONE	<b>NONE</b>	NONE	NONE
Silt	scalar	*Visual	NONE	<b>NONE</b>	NONE	NONE
Debris	scalar	*Visual	NONE	<b>NONE</b>	LIGHT	NONE
Sand/Dirt	scalar	*Visual	NONE	<b>NONE</b>	NONE	NONE
Appearance	scalar	*Visual	NORML	<b>NORML</b>	NORML	NORML
Odor	scalar	*Visual	NORML	<b>NORML</b>	NORML	NORML
Emulsified Water	scalar	*Visual	>2	<b>0.2%</b>	NEG	NEG
Free Water	scalar	*Visual		<b>NEG</b>	Submitt	By: EDDIE BIDDLE

# OIL ANALYSIS REPORT

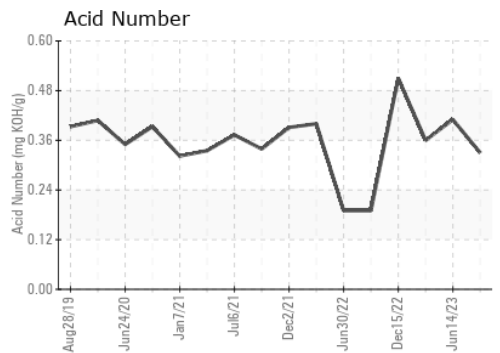
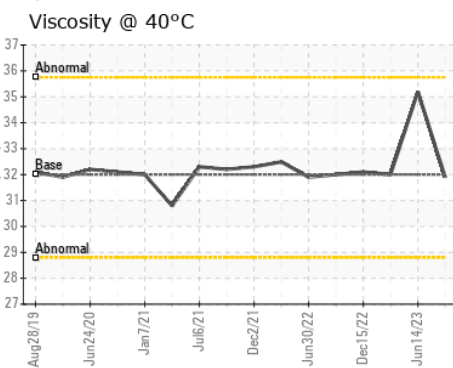
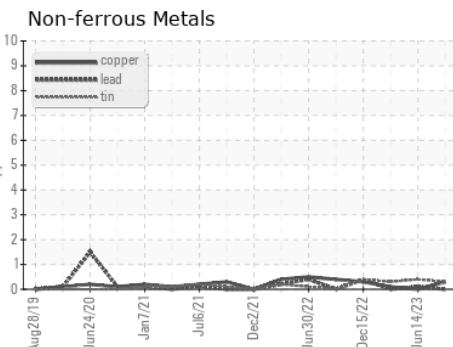
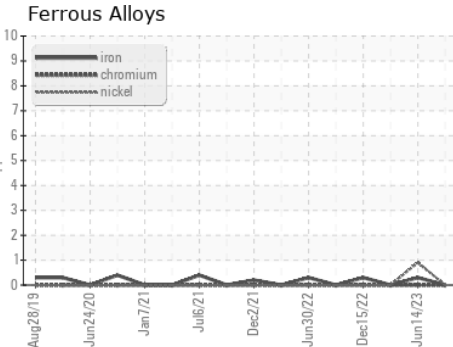


FLUID PROPERTIES		method	limit/base	current	history1	history2
Visc @ 40°C	cSt	ASTM D445	32	<b>31.9</b>	35.2	32.0

SAMPLE IMAGES		method	limit/base	current	history1	history2
---------------	--	--------	------------	---------	----------	----------



## GRAPHS



Certificate L2367

**Laboratory** : WearCheck USA - 501 Madison Ave., Cary, NC 27513  
**Sample No.** : RP0029147  
**Lab Number** : 05965458  
**Unique Number** : 10672009  
**Test Package** : PLANT

**Received** : 29 Sep 2023  
**Diagnosed** : 04 Oct 2023  
**Diagnostician** : Jonathan Hester

**ENERGY TRANSFER - WILLARD**  
 1309 SOUTH CONWELL ST  
 WILLARD, OH  
 US 44890  
 Contact: EDDIE RIDDLE

To discuss this sample report, contact Customer Service at 1-800-237-1369.

\* - Denotes test methods that are outside of the ISO 17025 scope of accreditation.

Statements of conformity to specifications are based on the simple acceptance decision rule (JCGM 106:2012)

T: (419)467-7972

F: