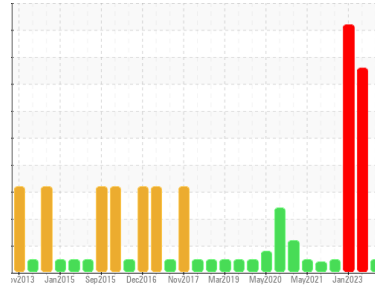




# OIL ANALYSIS REPORT

Sample Rating Trend



**NORMAL**



Area  
**CHEATHAM ANNEX**  
 Machine Id  
**1A 1ALL CRANE 1A (S/N 62510224)**

Component  
**Gearbox**  
 Fluid  
**MOBIL MOBILGEAR 600 XP 220 (--- GAL)**

## DIAGNOSIS

### Recommendation

Resample at the next service interval to monitor.

### Wear

All component wear rates are normal.

### Contamination

The water content is negligible. There is no indication of any contamination in the oil.

### Fluid Condition

The AN level is acceptable for this fluid. The condition of the oil is suitable for further service.

SAMPLE INFORMATION		method	limit/base	current	history1	history2
Sample Number	Client Info			<b>WC0752652</b>	WC0752688	WC0752676
Sample Date	Client Info			<b>01 Oct 2023</b>	22 Apr 2023	22 Jan 2023
Machine Age	mths	Client Info		<b>0</b>	0	0
Oil Age	mths	Client Info		<b>0</b>	0	0
Oil Changed	Client Info			<b>N/A</b>	N/A	N/A
Sample Status				<b>NORMAL</b>	SEVERE	SEVERE

WEAR METALS		method	limit/base	current	history1	history2
Iron	ppm	ASTM D5185m	>200	<b>3</b>	22	15
Chromium	ppm	ASTM D5185m	>15	<b>0</b>	0	<1
Nickel	ppm	ASTM D5185m	>15	<b>0</b>	0	<1
Titanium	ppm	ASTM D5185m		<b>0</b>	0	0
Silver	ppm	ASTM D5185m		<b>0</b>	0	<1
Aluminum	ppm	ASTM D5185m	>25	<b>1</b>	<1	<1
Lead	ppm	ASTM D5185m	>100	<b>0</b>	0	0
Copper	ppm	ASTM D5185m	>200	<b>0</b>	<1	<1
Tin	ppm	ASTM D5185m	>25	<b>0</b>	0	<1
Vanadium	ppm	ASTM D5185m		<b>0</b>	0	<1
Cadmium	ppm	ASTM D5185m		<b>0</b>	0	0

ADDITIVES		method	limit/base	current	history1	history2
Boron	ppm	ASTM D5185m		<b>5</b>	0	<1
Barium	ppm	ASTM D5185m		<b>0</b>	0	3
Molybdenum	ppm	ASTM D5185m		<b>0</b>	0	0
Manganese	ppm	ASTM D5185m		<b>&lt;1</b>	<1	<1
Magnesium	ppm	ASTM D5185m		<b>3</b>	20	<1
Calcium	ppm	ASTM D5185m		<b>3</b>	2	3
Phosphorus	ppm	ASTM D5185m		<b>342</b>	281	241
Zinc	ppm	ASTM D5185m		<b>19</b>	76	65
Sulfur	ppm	ASTM D5185m		<b>15314</b>	20189	12340

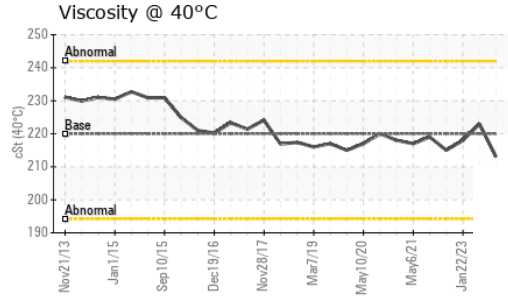
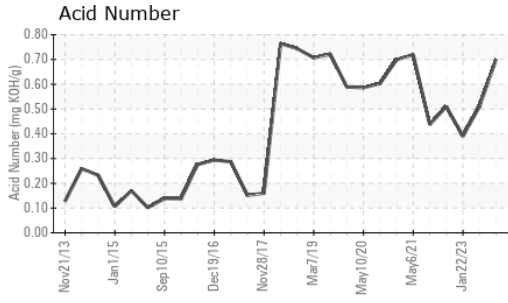
CONTAMINANTS		method	limit/base	current	history1	history2
Silicon	ppm	ASTM D5185m	>50	<b>&lt;1</b>	1	2
Sodium	ppm	ASTM D5185m		<b>&lt;1</b>	<1	<1
Potassium	ppm	ASTM D5185m	>20	<b>1</b>	0	<1

FLUID DEGRADATION		method	limit/base	current	history1	history2
Acid Number (AN)	mg KOH/g	ASTM D8045		<b>0.70</b>	0.51	0.39

VISUAL		method	limit/base	current	history1	history2
White Metal	scalar	*Visual	NONE	<b>NONE</b>	NONE	NONE
Yellow Metal	scalar	*Visual	NONE	<b>NONE</b>	NONE	NONE
Precipitate	scalar	*Visual	NONE	<b>NONE</b>	NONE	NONE
Silt	scalar	*Visual	NONE	<b>NONE</b>	NONE	MODER
Debris	scalar	*Visual	NONE	<b>NONE</b>	▲ MODER	▲ MODER
Sand/Dirt	scalar	*Visual	NONE	<b>NONE</b>	NONE	NONE
Appearance	scalar	*Visual	NORML	<b>NORML</b>	▲ HAZY	▲ HAZY
Odor	scalar	*Visual	NORML	<b>NORML</b>	NORML	NORML
Emulsified Water	scalar	*Visual	>0.2	<b>NEG</b>	▲ 0.2%	● 0.2%
Free Water	scalar	*Visual		<b>NEG</b>	● 1.0	● 1.0

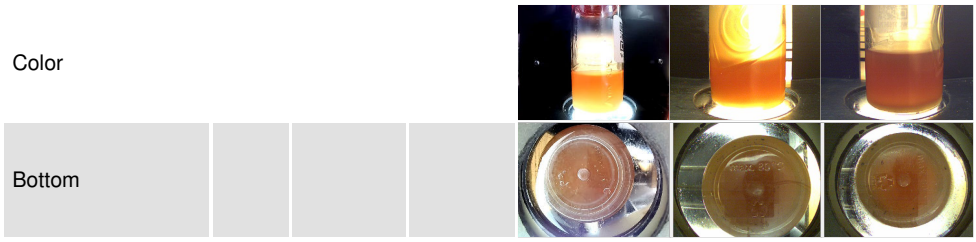


# OIL ANALYSIS REPORT

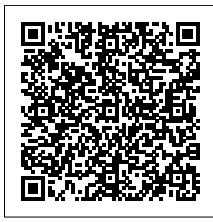
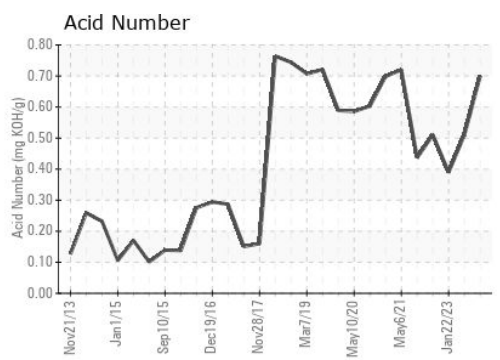
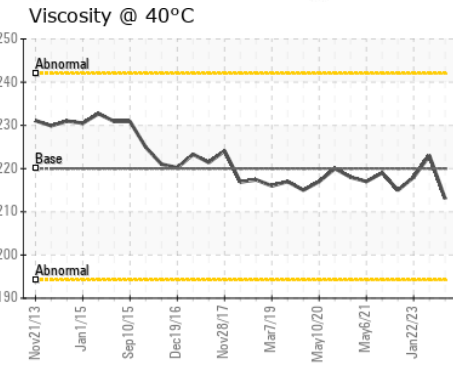
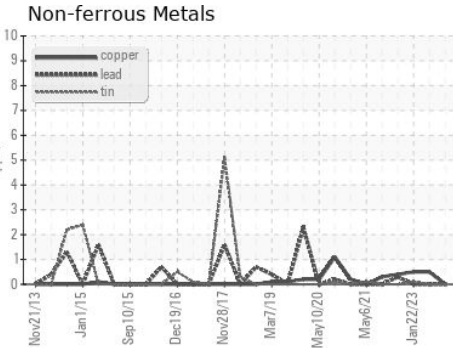
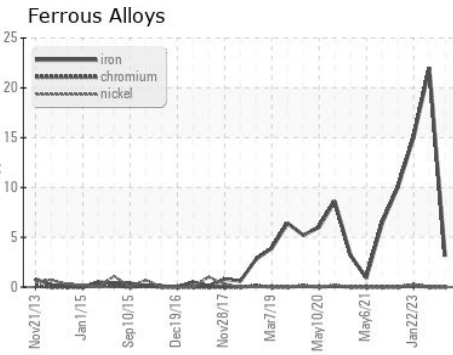


FLUID PROPERTIES	method	limit/base	current	history1	history2
Visc @ 40°C	cSt	ASTM D445	220	213	218

SAMPLE IMAGES	method	limit/base	current	history1	history2
---------------	--------	------------	---------	----------	----------



## GRAPHS



**Laboratory** : WearCheck USA - 501 Madison Ave., Cary, NC 27513  
**Sample No.** : WC0752652 **Received** : 29 Sep 2023  
**Lab Number** : 05965482 **Diagnosed** : 02 Oct 2023  
**Unique Number** : 10672033 **Diagnostician** : Don Baldrige  
**Test Package** : IND 2

**CARGOTEC MARINE - MACGREGOR**  
 525 BYRON ST, SUITE B  
 CHESAPEAKE, VA  
 US 23320  
 Contact: TARMO MAGI  
 tarmo.magi@macgregor.com  
 T: (757)558-4584  
 F: (757)558-4581

Certificate L2367  
 To discuss this sample report, contact Customer Service at 1-800-237-1369.  
 \* - Denotes test methods that are outside of the ISO 17025 scope of accreditation.  
 Statements of conformity to specifications are based on the simple acceptance decision rule (JCGM 106:2012)