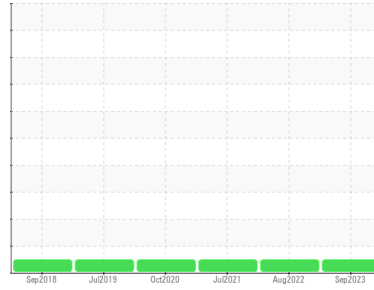




OIL ANALYSIS REPORT

Sample Rating Trend



NORMAL



Machine Id
TRANE 1900 K CH 2 (S/N L95K09646)
 Component
Refrigeration Compressor
 Fluid
TRANE 0022 (--- GAL)

DIAGNOSIS

Recommendation

Resample at the next service interval to monitor.

Wear

All component wear rates are normal.

Contamination

The water content is negligible. There is no indication of any contamination in the oil.

Fluid Condition

The AN level is acceptable for this fluid. The condition of the oil is suitable for further service.

SAMPLE INFORMATION

	method	limit/base	current	history1	history2
Sample Number	Client Info		WC0830495	WC0714071	WC0597051
Sample Date	Client Info		05 Sep 2023	11 Aug 2022	27 Jul 2021
Machine Age	hrs	Client Info	78751	76923	74908
Oil Age	hrs	Client Info	73425	76923	0
Oil Changed	Client Info		Not Changed	Not Changed	N/A
Sample Status			NORMAL	NORMAL	NORMAL

WEAR METALS

	method	limit/base	current	history1	history2
Iron	ppm	ASTM D5185m >8	<1	0	<1
Chromium	ppm	ASTM D5185m >2	0	0	0
Nickel	ppm	ASTM D5185m	0	0	0
Titanium	ppm	ASTM D5185m	0	0	0
Silver	ppm	ASTM D5185m >2	0	<1	0
Aluminum	ppm	ASTM D5185m >3	<1	<1	0
Lead	ppm	ASTM D5185m >2	0	0	0
Copper	ppm	ASTM D5185m >8	0	<1	<1
Tin	ppm	ASTM D5185m >4	3	4	2
Antimony	ppm	ASTM D5185m	---	---	0
Vanadium	ppm	ASTM D5185m	0	0	<1
Cadmium	ppm	ASTM D5185m	0	0	0

ADDITIVES

	method	limit/base	current	history1	history2
Boron	ppm	ASTM D5185m	0	0	<1
Barium	ppm	ASTM D5185m	0	0	0
Molybdenum	ppm	ASTM D5185m	0	0	0
Manganese	ppm	ASTM D5185m	0	0	0
Magnesium	ppm	ASTM D5185m	0	0	0
Calcium	ppm	ASTM D5185m	0	0	0
Phosphorus	ppm	ASTM D5185m	2	<1	<1
Zinc	ppm	ASTM D5185m	0	0	0
Sulfur	ppm	ASTM D5185m	27	<1	23

CONTAMINANTS

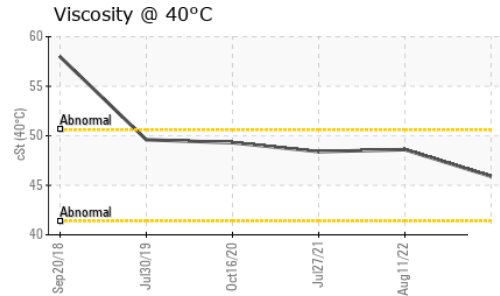
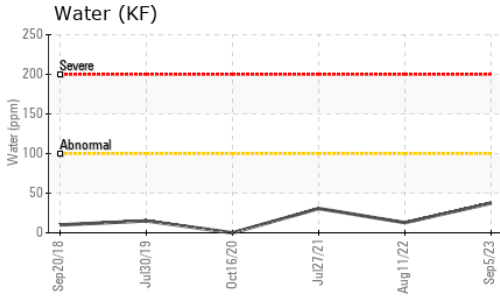
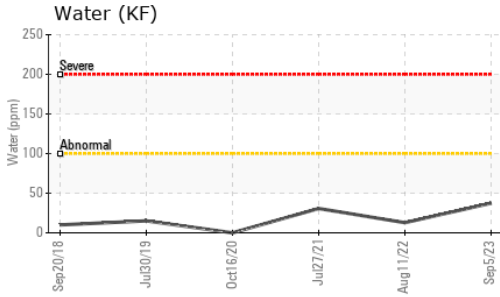
	method	limit/base	current	history1	history2
Silicon	ppm	ASTM D5185m >15	11	9	12
Sodium	ppm	ASTM D5185m	0	0	0
Potassium	ppm	ASTM D5185m >20	0	<1	1
Water	%	ASTM D6304 >0.01	0.003	0.001	0.003
ppm Water	ppm	ASTM D6304 >100	37.4	12.8	30.7

FLUID DEGRADATION

	method	limit/base	current	history1	history2
Acid Number (AN)	mg KOH/g	ASTM D974	0.014	0.015	0.015



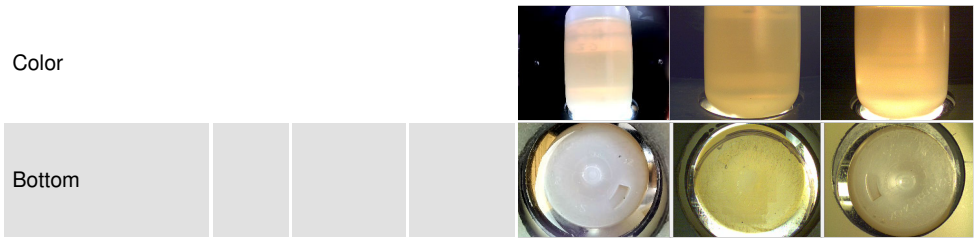
OIL ANALYSIS REPORT



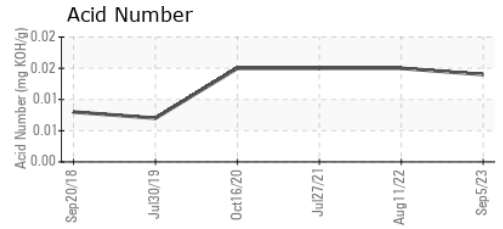
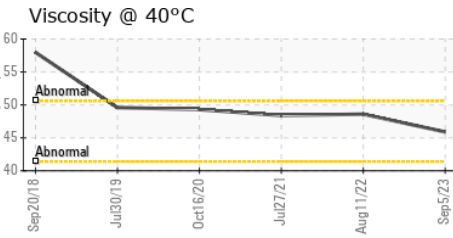
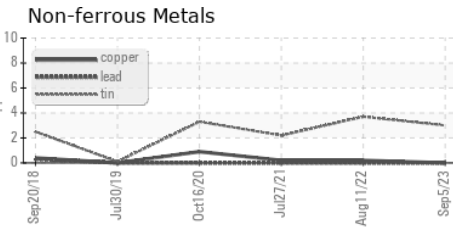
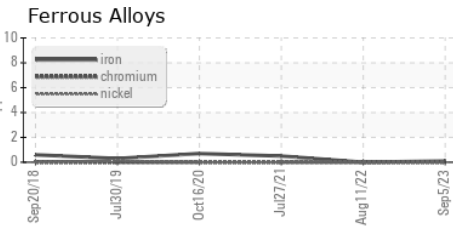
PARAMETER	method	limit/base	current	history1	history2
White Metal	scalar	*Visual	NONE	NONE	NONE
Yellow Metal	scalar	*Visual	NONE	NONE	NONE
Precipitate	scalar	*Visual	NONE	NONE	NONE
Silt	scalar	*Visual	NONE	NONE	NONE
Debris	scalar	*Visual	NONE	NONE	NONE
Sand/Dirt	scalar	*Visual	NONE	NONE	NONE
Appearance	scalar	*Visual	NORML	NORML	NORML
Odor	scalar	*Visual	NORML	NORML	NORML
Emulsified Water	scalar	*Visual	>0.01	NEG	NEG
Free Water	scalar	*Visual		NEG	NEG

PARAMETER	method	limit/base	current	history1	history2
FLUID PROPERTIES					
Visc @ 40°C	cSt	ASTM D445	45.9	48.6	48.4

PARAMETER	method	limit/base	current	history1	history2
-----------	--------	------------	---------	----------	----------



GRAPHS



Certificate L2367

Laboratory : WearCheck USA - 501 Madison Ave., Cary, NC 27513
Sample No. : WC0830495 **Received** : 02 Oct 2023
Lab Number : 05966404 **Diagnosed** : 03 Oct 2023
Unique Number : 10672955 **Diagnostician** : Don Baldrige
Test Package : IND 2

CDS MECHANICAL SERVICES INC
 1654 CROFTON BLVD, SUITE 9
 CROFTON, MD
 US 21114
 Contact: KENNY COMBA
 kcomba@cdsmechanical.net
 T: (410)451-7157
 F:

To discuss this sample report, contact Customer Service at 1-800-237-1369.

* - Denotes test methods that are outside of the ISO 17025 scope of accreditation.

Statements of conformity to specifications are based on the simple acceptance decision rule (JCGM 106:2012)