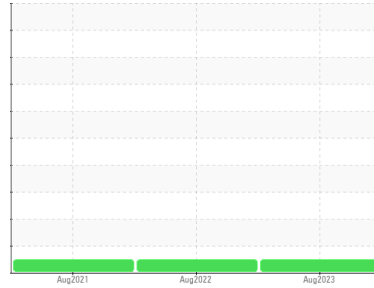




# OIL ANALYSIS REPORT

Sample Rating Trend

**NORMAL**



Machine Id  
**TRANE 575 7TH ST C-2 (S/N L02L20090)**

Component  
**Refrigeration Compressor**  
Fluid  
**TRANE 0022 (8 GAL)**

## DIAGNOSIS

### Recommendation

Resample at the next service interval to monitor.

### Wear

All component wear rates are normal.

### Contamination

The water content is negligible. There is no indication of any contamination in the oil.

### Fluid Condition

The AN level is acceptable for this fluid. The condition of the oil is suitable for further service.

## SAMPLE INFORMATION

	method	limit/base	current	history1	history2
Sample Number	Client Info		<b>WC0713986</b>	WC0714068	WC0596950
Sample Date	Client Info		<b>23 Aug 2023</b>	10 Aug 2022	30 Aug 2021
Machine Age	hrs	Client Info	<b>11798</b>	10322	9329
Oil Age	hrs	Client Info	<b>11798</b>	10322	0
Oil Changed	Client Info		<b>Not Changed</b>	N/A	N/A
Sample Status			<b>NORMAL</b>	NORMAL	NORMAL

## WEAR METALS

	method	limit/base	current	history1	history2
Iron	ppm	ASTM D5185m >8	<b>&lt;1</b>	0	<1
Chromium	ppm	ASTM D5185m >2	<b>0</b>	0	0
Nickel	ppm	ASTM D5185m	<b>0</b>	0	0
Titanium	ppm	ASTM D5185m	<b>0</b>	0	0
Silver	ppm	ASTM D5185m >2	<b>0</b>	0	0
Aluminum	ppm	ASTM D5185m >3	<b>&lt;1</b>	<1	0
Lead	ppm	ASTM D5185m >2	<b>0</b>	0	<1
Copper	ppm	ASTM D5185m >8	<b>0</b>	<1	2
Tin	ppm	ASTM D5185m >4	<b>&lt;1</b>	<1	<1
Antimony	ppm	ASTM D5185m	<b>---</b>	---	0
Vanadium	ppm	ASTM D5185m	<b>0</b>	0	0
Cadmium	ppm	ASTM D5185m	<b>0</b>	0	0

## ADDITIVES

	method	limit/base	current	history1	history2
Boron	ppm	ASTM D5185m	<b>0</b>	0	<1
Barium	ppm	ASTM D5185m	<b>0</b>	0	0
Molybdenum	ppm	ASTM D5185m	<b>0</b>	0	0
Manganese	ppm	ASTM D5185m	<b>0</b>	0	0
Magnesium	ppm	ASTM D5185m	<b>0</b>	0	0
Calcium	ppm	ASTM D5185m	<b>0</b>	0	0
Phosphorus	ppm	ASTM D5185m	<b>&lt;1</b>	<1	3
Zinc	ppm	ASTM D5185m	<b>0</b>	0	0
Sulfur	ppm	ASTM D5185m	<b>0</b>	0	125

## CONTAMINANTS

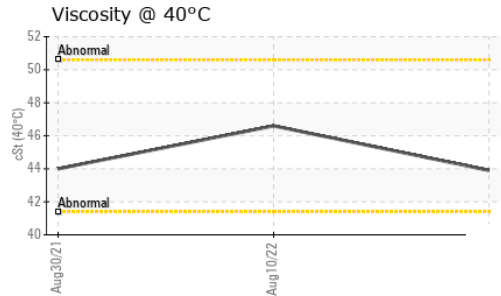
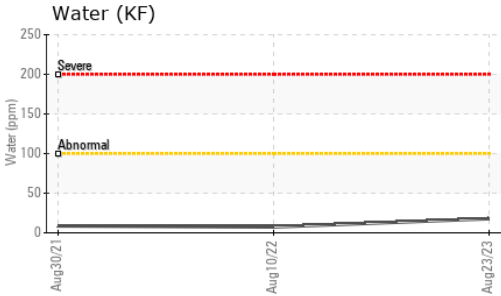
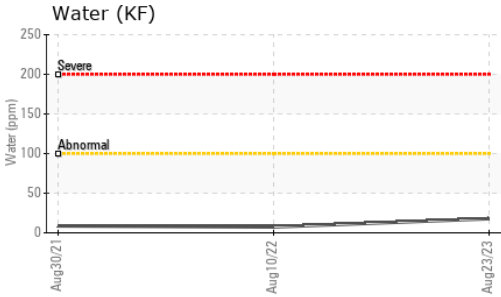
	method	limit/base	current	history1	history2
Silicon	ppm	ASTM D5185m >15	<b>12</b>	14	11
Sodium	ppm	ASTM D5185m	<b>0</b>	0	0
Potassium	ppm	ASTM D5185m >20	<b>0</b>	<1	0
Water	%	ASTM D6304 >0.01	<b>0.002</b>	0.001	0.001
ppm Water	ppm	ASTM D6304 >100	<b>17.8</b>	7.4	8.7

## FLUID DEGRADATION

	method	limit/base	current	history1	history2
Acid Number (AN)	mg KOH/g	ASTM D974	<b>0.014</b>	0.013	0.027



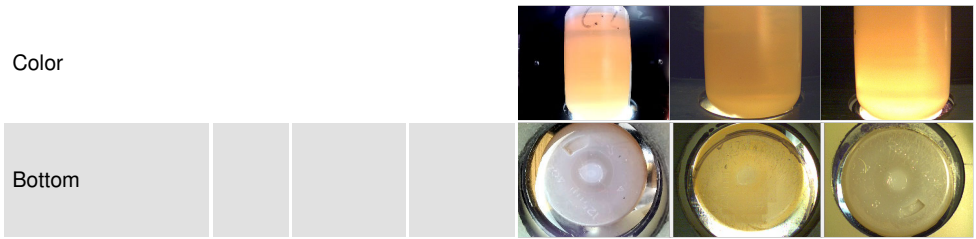
# OIL ANALYSIS REPORT



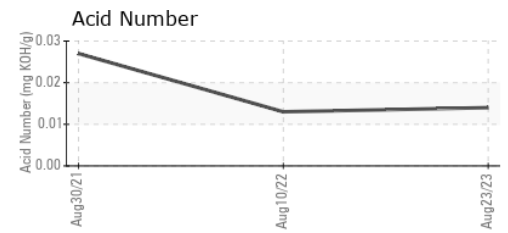
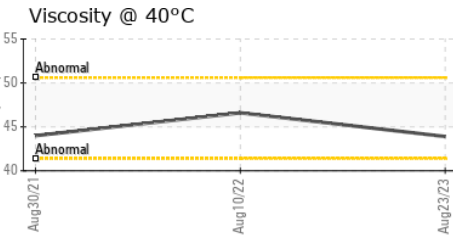
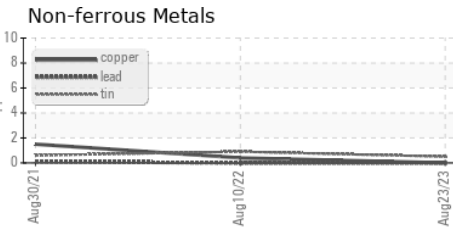
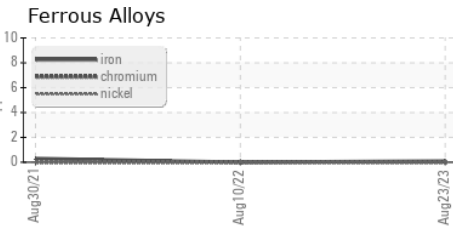
VISUAL	method	limit/base	current	history1	history2
White Metal	scalar	*Visual	NONE	NONE	NONE
Yellow Metal	scalar	*Visual	NONE	NONE	NONE
Precipitate	scalar	*Visual	NONE	NONE	NONE
Silt	scalar	*Visual	NONE	NONE	NONE
Debris	scalar	*Visual	NONE	NONE	NONE
Sand/Dirt	scalar	*Visual	NONE	NONE	NONE
Appearance	scalar	*Visual	NORML	NORML	NORML
Odor	scalar	*Visual	NORML	NORML	NORML
Emulsified Water	scalar	*Visual	>0.01	NEG	NEG
Free Water	scalar	*Visual		NEG	NEG

FLUID PROPERTIES	method	limit/base	current	history1	history2
Visc @ 40°C	cSt	ASTM D445	<b>43.9</b>	46.6	44.0

SAMPLE IMAGES	method	limit/base	current	history1	history2
---------------	--------	------------	---------	----------	----------



## GRAPHS



Certificate L2367

**Laboratory** : WearCheck USA - 501 Madison Ave., Cary, NC 27513  
**Sample No.** : WC0713986 **Received** : 02 Oct 2023  
**Lab Number** : **05966408** **Diagnosed** : 03 Oct 2023  
**Unique Number** : 10672959 **Diagnostician** : Don Baldrige  
**Test Package** : IND 2

**CDS MECHANICAL SERVICES INC**  
 1654 CROFTON BLVD, SUITE 9  
 CROFTON, MD  
 US 21114  
 Contact: DAVID BEALE  
 DBEALE@CDSMECHANICAL.NET  
 T:  
 F:

To discuss this sample report, contact Customer Service at 1-800-237-1369.  
 \* - Denotes test methods that are outside of the ISO 17025 scope of accreditation.  
 Statements of conformity to specifications are based on the simple acceptance decision rule (JCGM 106:2012)