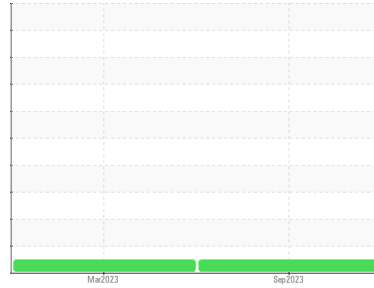




OIL ANALYSIS REPORT

Sample Rating Trend

NORMAL



Area
SULLUBE
 Machine Id
SULLAIR 201607200018 - KAMPSVILLE BUILDING MATERIAL
 Component
Compressor

DIAGNOSIS

Recommendation

Resample at the next service interval to monitor.

Wear

All component wear rates are normal.

Contamination

There is no indication of any contamination in the oil.

Fluid Condition

The AN level is acceptable for this fluid. The condition of the oil is suitable for further service.

SAMPLE INFORMATION		method	limit/base	current	history1	history2
Sample Number	Client Info			UCH05967885	UCH05789849	---
Sample Date	Client Info			28 Sep 2023	09 Mar 2023	---
Machine Age	hrs	Client Info		3200	2491	---
Oil Age	hrs	Client Info		709	2491	---
Oil Changed	Client Info			Not Chngd	Changed	---
Sample Status				NORMAL	NORMAL	---

WEAR METALS		method	limit/base	current	history1	history2
Iron	ppm	ASTM D5185m	>50	0	<1	---
Chromium	ppm	ASTM D5185m	>10	0	0	---
Nickel	ppm	ASTM D5185m		<1	1	---
Titanium	ppm	ASTM D5185m		0	<1	---
Silver	ppm	ASTM D5185m		0	0	---
Aluminum	ppm	ASTM D5185m	>25	0	<1	---
Lead	ppm	ASTM D5185m	>25	0	0	---
Copper	ppm	ASTM D5185m	>50	<1	<1	---
Tin	ppm	ASTM D5185m	>15	1	<1	---
Vanadium	ppm	ASTM D5185m		0	0	---
Cadmium	ppm	ASTM D5185m		<1	0	---

ADDITIVES		method	limit/base	current	history1	history2
Boron	ppm	ASTM D5185m		0	0	---
Barium	ppm	ASTM D5185m	745	609	456	---
Molybdenum	ppm	ASTM D5185m	0.0	0	0	---
Manganese	ppm	ASTM D5185m		<1	<1	---
Magnesium	ppm	ASTM D5185m	0.0	2	2	---
Calcium	ppm	ASTM D5185m	1	4	5	---
Phosphorus	ppm	ASTM D5185m	3	4	12	---
Zinc	ppm	ASTM D5185m	0.1	0	7	---
Sulfur	ppm	ASTM D5185m	240	329	298	---

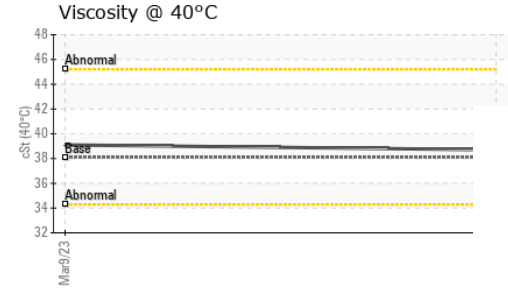
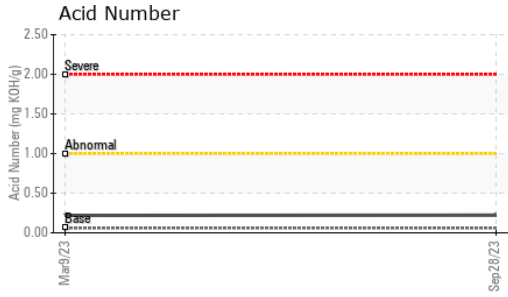
CONTAMINANTS		method	limit/base	current	history1	history2
Silicon	ppm	ASTM D5185m	>25	2	5	---
Sodium	ppm	ASTM D5185m		18	25	---
Potassium	ppm	ASTM D5185m	>20	2	4	---

FLUID DEGRADATION		method	limit/base	current	history1	history2
Acid Number (AN)	mg KOH/g	ASTM D8045	.06	0.223	0.22	---

VISUAL		method	limit/base	current	history1	history2
White Metal	scalar	*Visual	NONE	NONE	NONE	---
Yellow Metal	scalar	*Visual	NONE	NONE	NONE	---
Precipitate	scalar	*Visual	NONE	NONE	NONE	---
Silt	scalar	*Visual	NONE	NONE	NONE	---
Debris	scalar	*Visual	NONE	NONE	LIGHT	---
Sand/Dirt	scalar	*Visual	NONE	NONE	NONE	---
Appearance	scalar	*Visual	NORML	NORML	NORML	---
Odor	scalar	*Visual	NORML	NORML	NORML	---
Emulsified Water	scalar	*Visual	>0.1	NEG	NEG	---
Free Water	scalar	*Visual		NEG	NEG	---

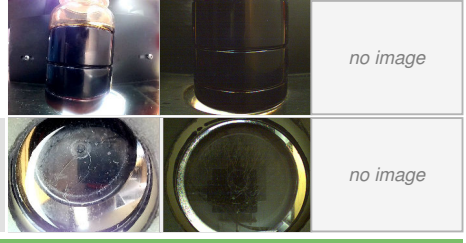


OIL ANALYSIS REPORT

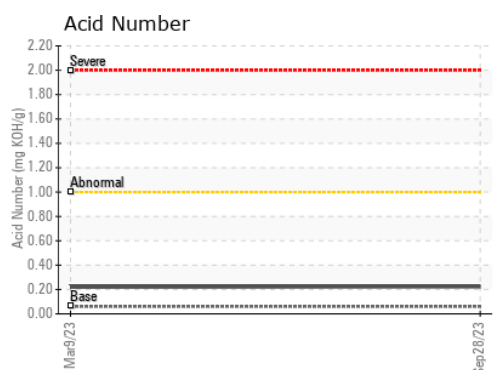
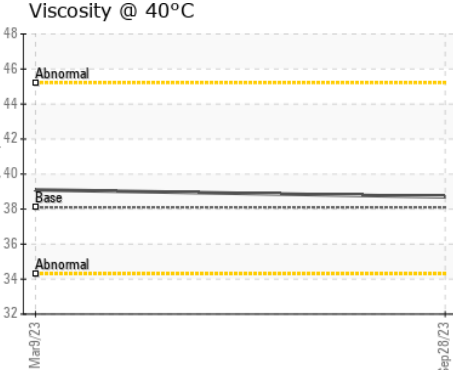
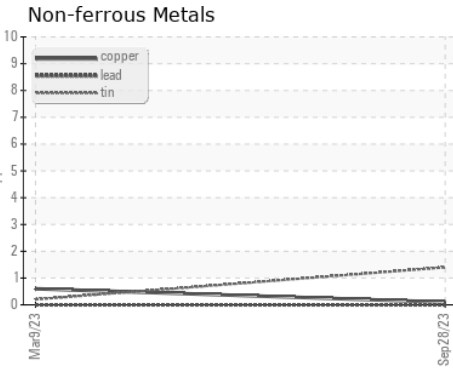
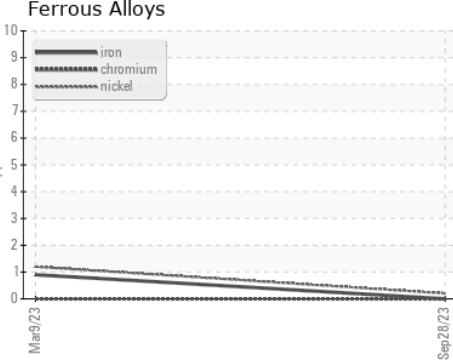


FLUID PROPERTIES	method	limit/base	current	history1	history2	
Visc @ 40°C	cSt	ASTM D445	38.1	38.7	39.1	---

SAMPLE IMAGES	method	limit/base	current	history1	history2
Color					no image
Bottom					no image



GRAPHS



Laboratory : WearCheck USA - 501 Madison Ave., Cary, NC 27513
Sample No. : UCH05967885 **Received** : 03 Oct 2023
Lab Number : **05967885** **Diagnosed** : 05 Oct 2023
Unique Number : 10674436 **Diagnostician** : Jonathan Hester
Test Package : IND 2

TATE ENGINEERING
 8131 VIRGINIA PINE CT
 RICHMOND, VA
 US 23237
 Contact: JOE MYRICK
 JOE.MYRICK@TATE.COM
 T: (804)339-0007
 F: (804)743-0415

To discuss this sample report, contact Customer Service at 1-800-237-1369.
 * - Denotes test methods that are outside of the ISO 17025 scope of accreditation.
 Statements of conformity to specifications are based on the simple acceptance decision rule (JCGM 106:2012)