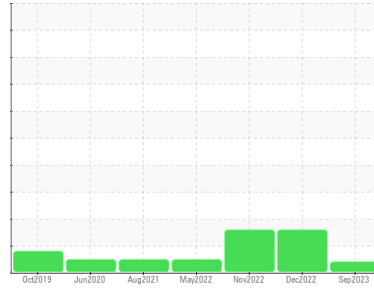




PROBLEM SUMMARY

Sample Rating Trend



VIS DEBRIS



Machine Id
KAESER AS 30T 6998409 (S/N 1367)
 Component
Compressor
 Fluid
KAESER SIGMA (OEM) S-460 (--- GAL)

COMPONENT CONDITION SUMMARY

No relevant graphs to display

RECOMMENDATION

Oil and filter change at the time of sampling has been noted. Resample at the next service interval to monitor. We were unable to perform a particle count due to a high concentration of particles present in this sample.

PROBLEMATIC TEST RESULTS

Sample Status		ABNORMAL	ABNORMAL	ABNORMAL
Debris	scalar *Visual	NONE	▲ HEAVY	NONE
				VLITE

Customer Id: LANORL
 Sample No.: KC95905
 Lab Number: 05969672
 Test Package: IND 2



To manage this report scan the QR code

To discuss the diagnosis or test data:
 Angela Borella +1 800-237-1369
angela.borella@wearcheckusa.com

To change component or sample information:
 Customer Service +1 1-800-237-1369
customerservice@wearcheck.com

RECOMMENDED ACTIONS

Action	Status	Date	Done By	Description
Change Fluid	---	---	?	Oil and filter change at the time of sampling has been noted.
Change Filter	---	---	?	Oil and filter change at the time of sampling has been noted.
Alert	---	---	?	We were unable to perform a particle count due to a high concentration of particles present in this sample.

HISTORICAL DIAGNOSIS

29 Dec 2022 Diag: Jonathan Hester

ISO



We recommend you service the filters on this component. Resample at the next service interval to monitor. All component wear rates are normal. There is a high amount of particulates present in the oil. The AN level is acceptable for this fluid. The condition of the oil is suitable for further service.

view report



09 Nov 2022 Diag: Angela Borella

ISO



We recommend you service the filters on this component. Resample at the next service interval to monitor. All component wear rates are normal. There is a high amount of particulates present in the oil. The AN level is acceptable for this fluid. The condition of the oil is acceptable for the time in service.

view report



18 May 2022 Diag: Jonathan Hester

NORMAL



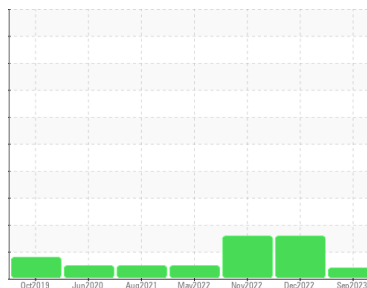
Resample at the next service interval to monitor. All component wear rates are normal. There is no indication of any contamination in the oil. The amount and size of particulates present in the system are acceptable. The AN level is acceptable for this fluid. The condition of the oil is suitable for further service.

view report



Machine Id
KAESER AS 30T 6998409 (S/N 1367)

Component
Compressor
Fluid
KAESER SIGMA (OEM) S-460 (--- GAL)



DIAGNOSIS

Recommendation

Oil and filter change at the time of sampling has been noted. Resample at the next service interval to monitor. We were unable to perform a particle count due to a high concentration of particles present in this sample.

Wear

All component wear rates are normal.

Contamination

High concentration of visible dirt/debris present in the oil.

Fluid Condition

The AN level is acceptable for this fluid. The condition of the oil is acceptable for the time in service.

SAMPLE INFORMATION

method	limit/base	current	history1	history2
Sample Number	Client Info	KC95905	KC96714	KC108347
Sample Date	Client Info	07 Sep 2023	29 Dec 2022	09 Nov 2022
Machine Age	hrs	29443	25037	23960
Oil Age	hrs	0	4957	5724
Oil Changed	Client Info	Changed	Not Changd	Not Changd
Sample Status		ABNORMAL	ABNORMAL	ABNORMAL

WEAR METALS

method	limit/base	current	history1	history2	
Iron	ppm	ASTM D5185m >50	<1	<1	0
Chromium	ppm	ASTM D5185m >10	0	0	0
Nickel	ppm	ASTM D5185m >3	0	0	0
Titanium	ppm	ASTM D5185m >3	0	0	0
Silver	ppm	ASTM D5185m >2	0	0	0
Aluminum	ppm	ASTM D5185m >10	0	0	0
Lead	ppm	ASTM D5185m >10	<1	0	0
Copper	ppm	ASTM D5185m >50	29	10	13
Tin	ppm	ASTM D5185m >10	0	0	0
Vanadium	ppm	ASTM D5185m	0	0	0
Cadmium	ppm	ASTM D5185m	0	0	0

ADDITIVES

method	limit/base	current	history1	history2	
Boron	ppm	ASTM D5185m	0	0	0
Barium	ppm	ASTM D5185m 90	0	1	0
Molybdenum	ppm	ASTM D5185m	0	0	0
Manganese	ppm	ASTM D5185m	0	0	0
Magnesium	ppm	ASTM D5185m 90	12	2	4
Calcium	ppm	ASTM D5185m 2	0	0	0
Phosphorus	ppm	ASTM D5185m	98	15	<1
Zinc	ppm	ASTM D5185m	55	6	11

CONTAMINANTS

method	limit/base	current	history1	history2	
Silicon	ppm	ASTM D5185m >25	2	<1	<1
Sodium	ppm	ASTM D5185m	3	0	0
Potassium	ppm	ASTM D5185m >20	2	<1	0
Water	%	ASTM D6304 >0.05	0.010	0.018	0.014
ppm Water	ppm	ASTM D6304 >500	103.0	182.8	144.7

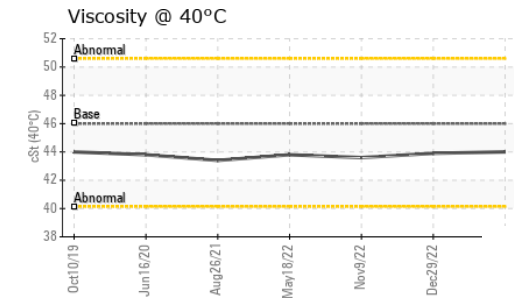
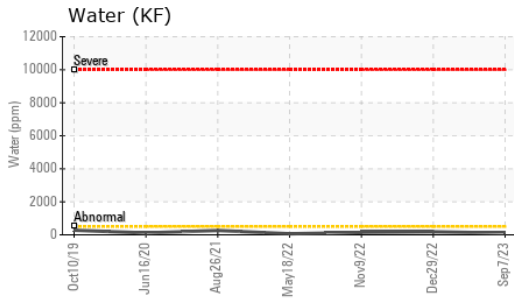
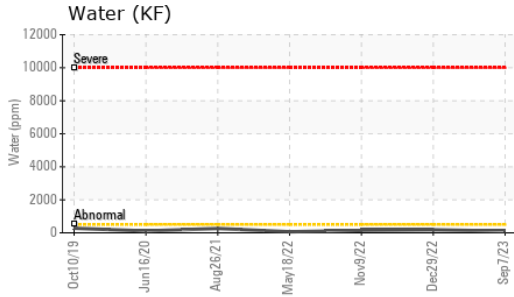
FLUID CLEANLINESS

method	limit/base	current	history1	history2
Particles >4µm	ASTM D7647	---	7785	19168
Particles >6µm	ASTM D7647 >1300	---	▲ 3704	▲ 4407
Particles >14µm	ASTM D7647 >80	---	▲ 502	▲ 373
Particles >21µm	ASTM D7647 >20	---	▲ 75	▲ 121
Particles >38µm	ASTM D7647 >4	---	2	5
Particles >71µm	ASTM D7647 >3	---	0	0
Oil Cleanliness	ISO 4406 (c) >--/17/13	---	▲ 20/19/16	▲ 21/19/16

FLUID DEGRADATION

method	limit/base	current	history1	history2	
Acid Number (AN)	mg KOH/g	ASTM D8045 0.4	0.28	0.31	0.30

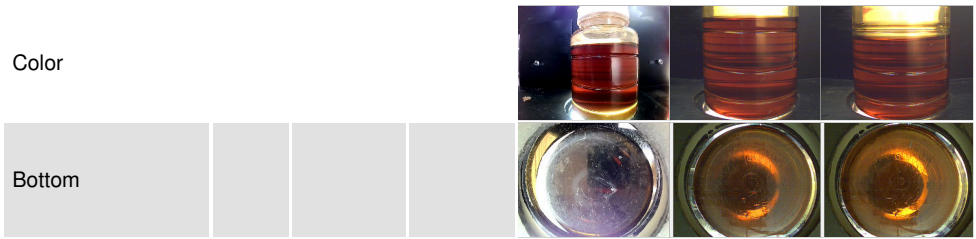
OIL ANALYSIS REPORT



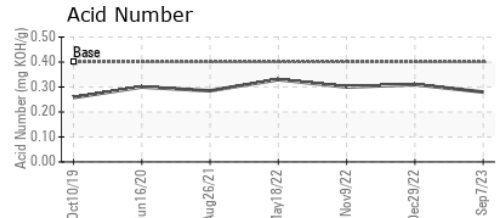
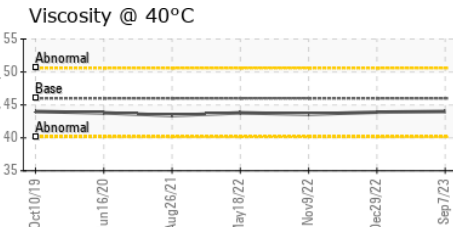
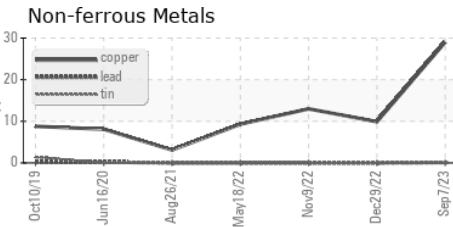
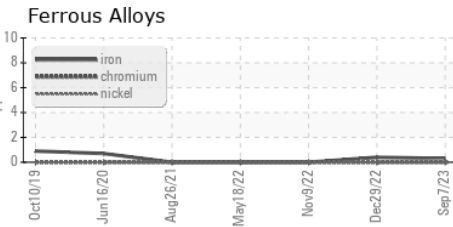
VISUAL	method	limit/base	current	history1	history2
White Metal	scalar	*Visual	NONE	NONE	NONE
Yellow Metal	scalar	*Visual	NONE	NONE	NONE
Precipitate	scalar	*Visual	NONE	NONE	NONE
Silt	scalar	*Visual	NONE	NONE	NONE
Debris	scalar	*Visual	▲ HEAVY	NONE	VLITE
Sand/Dirt	scalar	*Visual	NONE	NONE	NONE
Appearance	scalar	*Visual	NORML	NORML	NORML
Odor	scalar	*Visual	NORML	NORML	NORML
Emulsified Water	scalar	*Visual	>0.05	NEG	NEG
Free Water	scalar	*Visual	NEG	NEG	NEG

FLUID PROPERTIES	method	limit/base	current	history1	history2
Visc @ 40°C	cSt	ASTM D445	46	44.0	43.9

SAMPLE IMAGES	method	limit/base	current	history1	history2
---------------	--------	------------	---------	----------	----------



GRAPHS



Certificate L2367

Laboratory : WearCheck USA - 501 Madison Ave., Cary, NC 27513
Sample No. : KC95905 **Received** : 04 Oct 2023
Lab Number : 05969672 **Diagnosed** : 09 Oct 2023
Unique Number : 10676223 **Diagnostician** : Angela Borella
Test Package : IND 2

SUNDANCE GRAPHICS LLC
 9564 DELEGATES DR
 ORLANDO, FL
 US 32837
 Contact: SERVICE MANAGER

To discuss this sample report, contact Customer Service at 1-800-237-1369.

* - Denotes test methods that are outside of the ISO 17025 scope of accreditation.

Statements of conformity to specifications are based on the simple acceptance decision rule (JCGM 106:2012)

T:
F: