



# OIL ANALYSIS REPORT

Sample Rating Trend



**NORMAL**



Machine Id  
**HOUSE TEST SUMP**

Component  
**Hydraulic System**

Fluid  
**SHELL DTE 25 (425 GAL)**

## DIAGNOSIS

### Recommendation

Resample at the next service interval to monitor.

### Wear

All component wear rates are normal.

### Contamination

There is no indication of any contamination in the oil. The amount and size of particulates present in the system are acceptable.

### Fluid Condition

The AN level is acceptable for this fluid. The condition of the oil is suitable for further service.

## SAMPLE INFORMATION

	method	limit/base	current	history1	history2
Sample Number	Client Info		<b>PH0000523</b>	---	---
Sample Date	Client Info		<b>09 Oct 2023</b>	---	---
Machine Age	hrs	Client Info	<b>0</b>	---	---
Oil Age	hrs	Client Info	<b>14</b>	---	---
Oil Changed	Client Info		<b>Filtered</b>	---	---
Sample Status			<b>NORMAL</b>	---	---

## WEAR METALS

	method	limit/base	current	history1	history2
Iron	ppm	ASTM D5185m >20	<b>&lt;1</b>	---	---
Chromium	ppm	ASTM D5185m >20	<b>0</b>	---	---
Nickel	ppm	ASTM D5185m >20	<b>2</b>	---	---
Titanium	ppm	ASTM D5185m	<b>&lt;1</b>	---	---
Silver	ppm	ASTM D5185m	<b>0</b>	---	---
Aluminum	ppm	ASTM D5185m >20	<b>&lt;1</b>	---	---
Lead	ppm	ASTM D5185m >20	<b>0</b>	---	---
Copper	ppm	ASTM D5185m >20	<b>2</b>	---	---
Tin	ppm	ASTM D5185m >20	<b>0</b>	---	---
Vanadium	ppm	ASTM D5185m	<b>0</b>	---	---
Cadmium	ppm	ASTM D5185m	<b>0</b>	---	---

## ADDITIVES

	method	limit/base	current	history1	history2
Boron	ppm	ASTM D5185m	<b>0</b>	---	---
Barium	ppm	ASTM D5185m	<b>0</b>	---	---
Molybdenum	ppm	ASTM D5185m	<b>&lt;1</b>	---	---
Manganese	ppm	ASTM D5185m	<b>&lt;1</b>	---	---
Magnesium	ppm	ASTM D5185m	<b>0</b>	---	---
Calcium	ppm	ASTM D5185m	<b>92</b>	---	---
Phosphorus	ppm	ASTM D5185m	<b>402</b>	---	---
Zinc	ppm	ASTM D5185m	<b>590</b>	---	---
Sulfur	ppm	ASTM D5185m	<b>3289</b>	---	---

## CONTAMINANTS

	method	limit/base	current	history1	history2
Silicon	ppm	ASTM D5185m >15	<b>1</b>	---	---
Sodium	ppm	ASTM D5185m	<b>4</b>	---	---
Potassium	ppm	ASTM D5185m >20	<b>&lt;1</b>	---	---

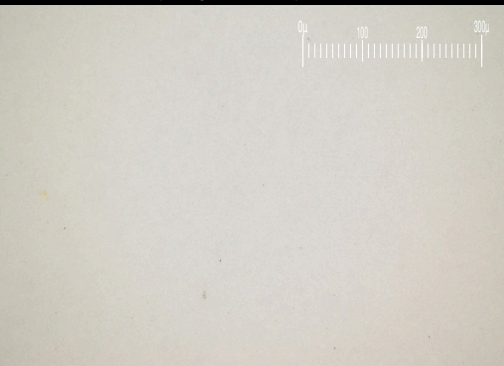
## FLUID CLEANLINESS

	method	limit/base	current	history1	history2
Particles >4µm	ASTM D7647	>1300	<b>522</b>	---	---
Particles >6µm	ASTM D7647	>320	<b>72</b>	---	---
Particles >14µm	ASTM D7647	>40	<b>12</b>	---	---
Particles >21µm	ASTM D7647	>10	<b>4</b>	---	---
Particles >38µm	ASTM D7647	>3	<b>0</b>	---	---
Particles >71µm	ASTM D7647	>3	<b>0</b>	---	---
Oil Cleanliness	ISO 4406 (c)	>17/15/12	<b>16/13/11</b>	---	---

## FLUID DEGRADATION

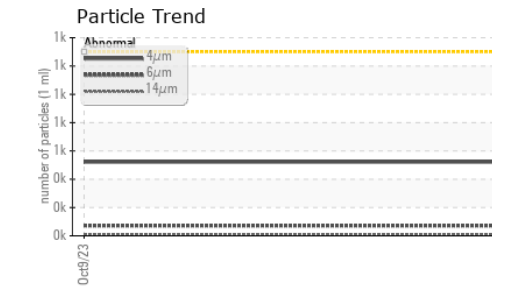
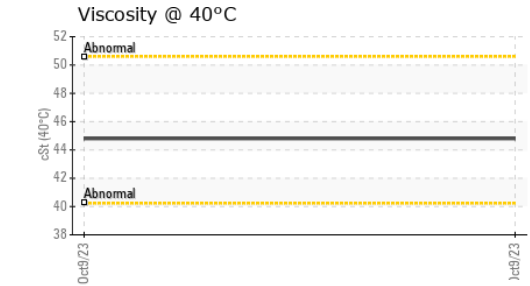
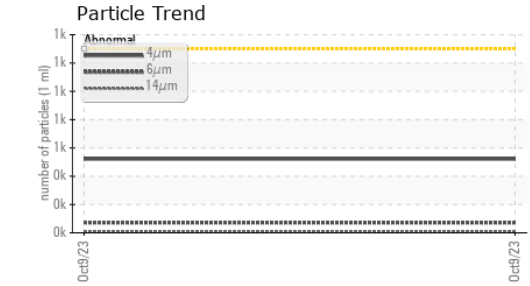
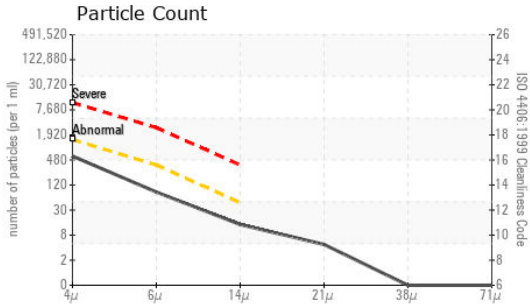
	method	limit/base	current	history1	history2
Acid Number (AN)	mg KOH/g	ASTM D8045	<b>0.609</b>	---	---

Particle Filter (Magn: 200 x)





# OIL ANALYSIS REPORT



**Laboratory** : WearCheck USA - 501 Madison Ave., Cary, NC 27513  
**Sample No.** : PH0000523      **Received** : 16 Oct 2023  
**Lab Number** : 05979578      **Diagnosed** : 19 Oct 2023  
**Unique Number** : 10696873      **Diagnostician** : Jonathan Hester  
**Test Package** : PLANT ( Additional Tests: PrtFilter )

**L & S ELECTRIC**  
 1810 COUNTY RD XX  
 ROTHSCCHILD, WI  
 US 54474  
 Contact: JENETTE S.

Certificate L2367  
 To discuss this sample report, contact Customer Service at 1-800-237-1369.  
 \* - Denotes test methods that are outside of the ISO 17025 scope of accreditation.  
 Statements of conformity to specifications are based on the simple acceptance decision rule (JCGM 106:2012)

VISUAL	method	limit/base	current	history1	history2	
White Metal	scalar	*Visual	NONE	NONE	---	---
Yellow Metal	scalar	*Visual	NONE	NONE	---	---
Precipitate	scalar	*Visual	NONE	NONE	---	---
Silt	scalar	*Visual	NONE	NONE	---	---
Debris	scalar	*Visual	NONE	NONE	---	---
Sand/Dirt	scalar	*Visual	NONE	NONE	---	---
Appearance	scalar	*Visual	NORML	NORML	---	---
Odor	scalar	*Visual	NORML	NORML	---	---
Emulsified Water	scalar	*Visual	>0.05	NEG	---	---
Free Water	scalar	*Visual		NEG	---	---

FLUID PROPERTIES	method	limit/base	current	history1	history2
Visc @ 40°C	cSt	ASTM D445	44.8	---	---

SAMPLE IMAGES	method	limit/base	current	history1	history2
Color				no image	no image
Bottom				no image	no image
PrtFilter				no image	no image

## GRAPHS

