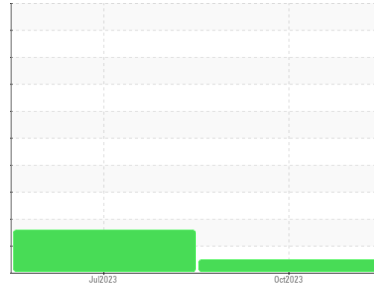




# OIL ANALYSIS REPORT

Sample Rating Trend

**NORMAL**



Area  
**QUINSYN PLUS**  
 Machine Id  
**QUINCY UN080411 - TINDALL CORP**  
 Component  
**Compressor**

## DIAGNOSIS

### Recommendation

Resample at the next service interval to monitor.

### Wear

All component wear rates are normal.

### Contamination

There is no indication of any contamination in the oil.

### Fluid Condition

The AN level is acceptable for this fluid. The condition of the oil is suitable for further service.

| SAMPLE INFORMATION |             | method      | limit/base | current            | history1    | history2 |
|--------------------|-------------|-------------|------------|--------------------|-------------|----------|
| Sample Number      | Client Info |             |            | <b>UCH05979849</b> | UCH05911295 | ---      |
| Sample Date        | Client Info |             |            | <b>03 Oct 2023</b> | 20 Jul 2023 | ---      |
| Machine Age        | hrs         | Client Info |            | <b>87705</b>       | 83000       | ---      |
| Oil Age            | hrs         | Client Info |            | <b>0</b>           | 0           | ---      |
| Oil Changed        | Client Info |             |            | <b>Not Changed</b> | Changed     | ---      |
| Sample Status      |             |             |            | <b>NORMAL</b>      | ATTENTION   | ---      |

| WEAR METALS |     | method      | limit/base | current      | history1 | history2 |
|-------------|-----|-------------|------------|--------------|----------|----------|
| Iron        | ppm | ASTM D5185m | >50        | <b>0</b>     | 0        | ---      |
| Chromium    | ppm | ASTM D5185m | >10        | <b>0</b>     | 0        | ---      |
| Nickel      | ppm | ASTM D5185m |            | <b>0</b>     | 0        | ---      |
| Titanium    | ppm | ASTM D5185m |            | <b>0</b>     | 0        | ---      |
| Silver      | ppm | ASTM D5185m |            | <b>0</b>     | 0        | ---      |
| Aluminum    | ppm | ASTM D5185m | >25        | <b>0</b>     | <1       | ---      |
| Lead        | ppm | ASTM D5185m | >25        | <b>0</b>     | 0        | ---      |
| Copper      | ppm | ASTM D5185m | >50        | <b>&lt;1</b> | 0        | ---      |
| Tin         | ppm | ASTM D5185m | >15        | <b>0</b>     | <1       | ---      |
| Vanadium    | ppm | ASTM D5185m |            | <b>0</b>     | 0        | ---      |
| Cadmium     | ppm | ASTM D5185m |            | <b>0</b>     | 0        | ---      |

| ADDITIVES  |     | method      | limit/base | current  | history1 | history2 |
|------------|-----|-------------|------------|----------|----------|----------|
| Boron      | ppm | ASTM D5185m |            | <b>0</b> | 0        | ---      |
| Barium     | ppm | ASTM D5185m |            | <b>0</b> | 0        | ---      |
| Molybdenum | ppm | ASTM D5185m |            | <b>0</b> | 0        | ---      |
| Manganese  | ppm | ASTM D5185m |            | <b>0</b> | 0        | ---      |
| Magnesium  | ppm | ASTM D5185m |            | <b>0</b> | <1       | ---      |
| Calcium    | ppm | ASTM D5185m |            | <b>0</b> | 0        | ---      |
| Phosphorus | ppm | ASTM D5185m |            | <b>0</b> | 3        | ---      |
| Zinc       | ppm | ASTM D5185m |            | <b>0</b> | 0        | ---      |
| Sulfur     | ppm | ASTM D5185m |            | <b>0</b> | 16       | ---      |

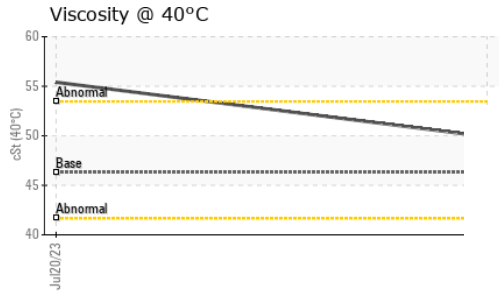
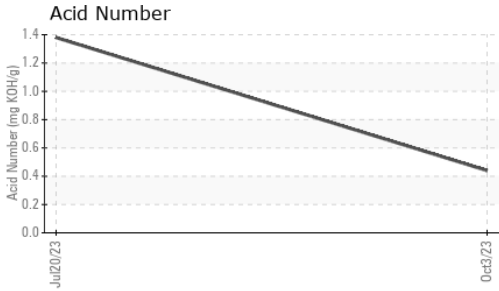
| CONTAMINANTS |     | method      | limit/base | current  | history1 | history2 |
|--------------|-----|-------------|------------|----------|----------|----------|
| Silicon      | ppm | ASTM D5185m | >25        | <b>0</b> | 1        | ---      |
| Sodium       | ppm | ASTM D5185m |            | <b>0</b> | 8        | ---      |
| Potassium    | ppm | ASTM D5185m | >20        | <b>1</b> | 2        | ---      |

| FLUID DEGRADATION |          | method     | limit/base | current     | history1 | history2 |
|-------------------|----------|------------|------------|-------------|----------|----------|
| Acid Number (AN)  | mg KOH/g | ASTM D8045 |            | <b>0.44</b> | ▲ 1.38   | ---      |

| VISUAL           |        | method  | limit/base | current      | history1 | history2 |
|------------------|--------|---------|------------|--------------|----------|----------|
| White Metal      | scalar | *Visual | NONE       | <b>NONE</b>  | NONE     | ---      |
| Yellow Metal     | scalar | *Visual | NONE       | <b>NONE</b>  | NONE     | ---      |
| Precipitate      | scalar | *Visual | NONE       | <b>NONE</b>  | NONE     | ---      |
| Silt             | scalar | *Visual | NONE       | <b>NONE</b>  | NONE     | ---      |
| Debris           | scalar | *Visual | NONE       | <b>NONE</b>  | HEAVY    | ---      |
| Sand/Dirt        | scalar | *Visual | NONE       | <b>NONE</b>  | NONE     | ---      |
| Appearance       | scalar | *Visual | NORML      | <b>NORML</b> | NORML    | ---      |
| Odor             | scalar | *Visual | NORML      | <b>NORML</b> | NORML    | ---      |
| Emulsified Water | scalar | *Visual | >0.1       | <b>NEG</b>   | NEG      | ---      |
| Free Water       | scalar | *Visual |            | <b>NEG</b>   | NEG      | ---      |

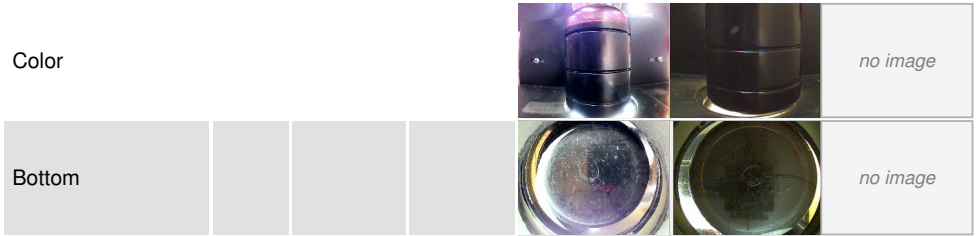


# OIL ANALYSIS REPORT

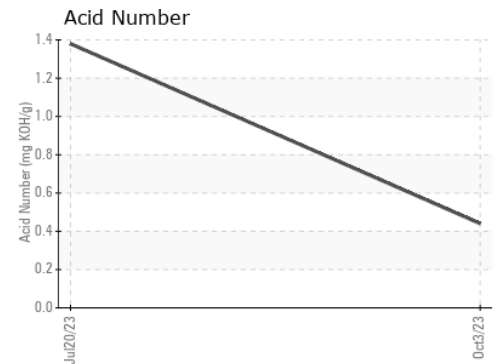
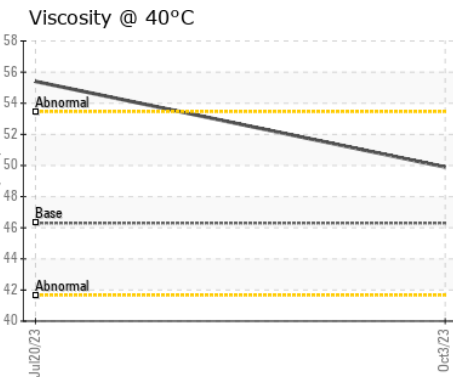
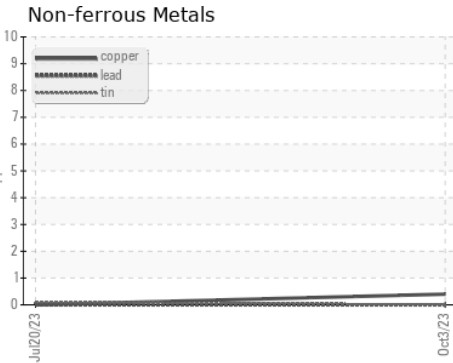
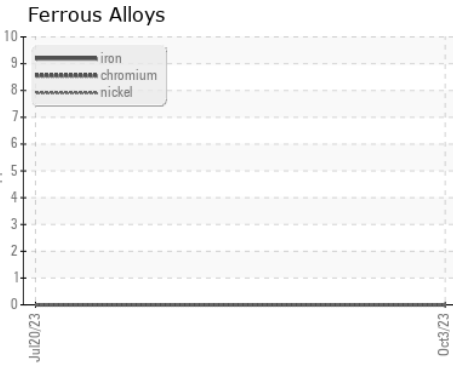


| FLUID PROPERTIES | method | limit/base | current | history1 | history2 |
|------------------|--------|------------|---------|----------|----------|
| Visc @ 40°C      | cSt    | ASTM D445  | 46.3    | 49.9 ▲   | 55.4     |

| SAMPLE IMAGES | method | limit/base | current | history1 | history2 |
|---------------|--------|------------|---------|----------|----------|
|---------------|--------|------------|---------|----------|----------|



## GRAPHS



Certificate L2367

**Laboratory** : WearCheck USA - 501 Madison Ave., Cary, NC 27513  
**Sample No.** : UCH05979849 **Received** : 16 Oct 2023  
**Lab Number** : 05979849 **Diagnosed** : 18 Oct 2023  
**Unique Number** : 10697144 **Diagnostician** : Don Baldrige  
**Test Package** : IND 2

**TATE ENGINEERING**  
 8131 VIRGINIA PINE CT  
 RICHMOND, VA  
 US 23237  
 Contact: JOE MYRICK  
 JOE.MYRICK@TATE.COM  
 T: (804)339-0007  
 F: (804)743-0415

To discuss this sample report, contact Customer Service at 1-800-237-1369.

\* - Denotes test methods that are outside of the ISO 17025 scope of accreditation.

Statements of conformity to specifications are based on the simple acceptance decision rule (JCGM 106:2012)