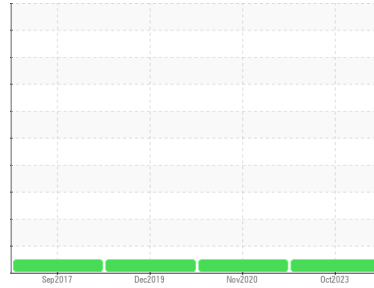




FUEL REPORT

Sample Rating Trend

NORMAL



Area
[2952437]
 Machine Id
14377840100 (S/N 2116602)

Component
Diesel Fuel
 Fluid
No.2 DIESEL FUEL (LOW-SULPHUR) (350 GAL)

DIAGNOSIS

Recommendation

All laboratory tests indicate that this sample meets specifications for No.2 ultra-low-sulfur diesel fuel.

Corrosion

All metal levels are normal indicating no corrosion in the system.

Contaminants

The water content is negligible. There is no Bacteria, Yeast and/or Fungus indicated in the sample. There is no indication of any contamination in the fuel.

Fuel Condition

Sulfur value derived by ASTM D5453 method for ULSD validation. Sulfur level is acceptable for ULSD specification.

SAMPLE INFORMATION		method	limit/base	current	history1	history2
Sample Number	Client Info			DC0031445	WCDF02490	WCDF01742
Sample Date	Client Info			11 Oct 2023	09 Nov 2020	24 Dec 2019
Machine Age	hrs	Client Info		0	372	0
Sample Status				NORMAL	NORMAL	NORMAL

PHYSICAL PROPERTIES		method	limit/base	current	history1	history2
ASTM Color	scalar	*ASTM D1500		L4.5	L5.5	L5.5
Visc @ 40°C	cSt	ASTM D445	3.0	2.46	2.3	2.51

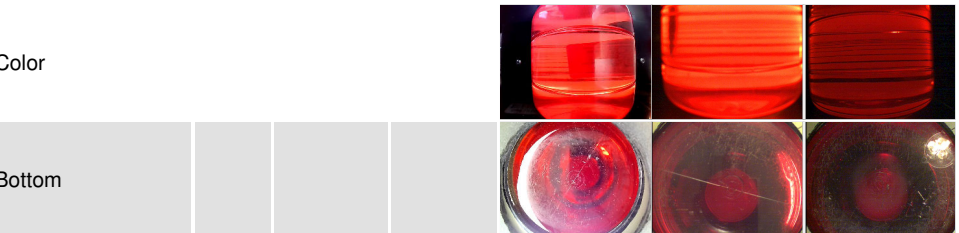
SULFUR CONTENT		method	limit/base	current	history1	history2
Sulfur	ppm	ASTM D5185m	250	197	9	26
Sulfur (UVF)	ppm	ASTM D5453		11	10	12

IGNITION QUALITY		method	limit/base	current	history1	history2
API Gravity		ASTM D7777	37.7	36.7	38.1	36.8

CONTAMINANTS		method	limit/base	current	history1	history2
Silicon	ppm	ASTM D5185m	<1.0	0	<1	<1
Sodium	ppm	ASTM D5185m	<0.1	<1	<1	0
Potassium	ppm	ASTM D5185m	<0.1	0	0	<1
Water	%	ASTM D6304	<0.05	0.003	0.003	0.001
ppm Water	ppm	ASTM D6304	<500	28.9	25.4	4.7
% Gasoline	%	*In-House	<0.50	0.0	0.0	0.0
% Biodiesel	%	*In-House	<20.0	0.0	0.0	0.0

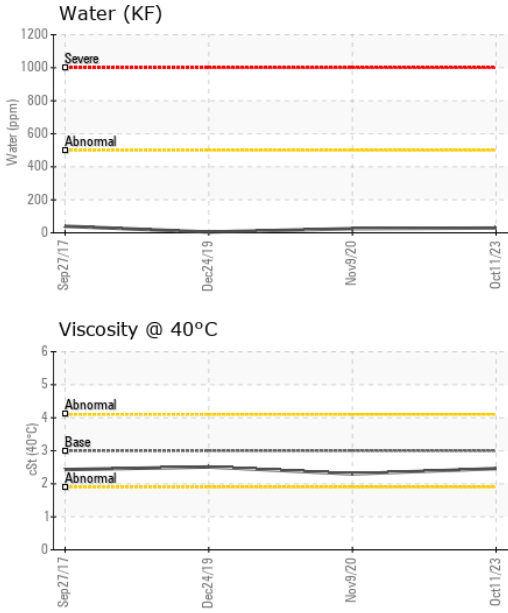
HEAVY METALS		method	limit/base	current	history1	history2
Aluminum	ppm	ASTM D5185m	<0.1	0	<1	0
Nickel	ppm	ASTM D5185m	<0.1	0	0	0
Lead	ppm	ASTM D5185m	<0.1	0	0	0
Vanadium	ppm	ASTM D5185m	<0.1	0	0	2
Iron	ppm	ASTM D5185m	<0.1	0	0	<1
Calcium	ppm	ASTM D5185m	<0.1	0	<1	2
Magnesium	ppm	ASTM D5185m	<0.1	0	0	2
Phosphorus	ppm	ASTM D5185m	<0.1	0	2	0
Zinc	ppm	ASTM D5185m	<0.1	0	4	2

SAMPLE IMAGES		method	limit/base	current	history1	history2
---------------	--	--------	------------	---------	----------	----------

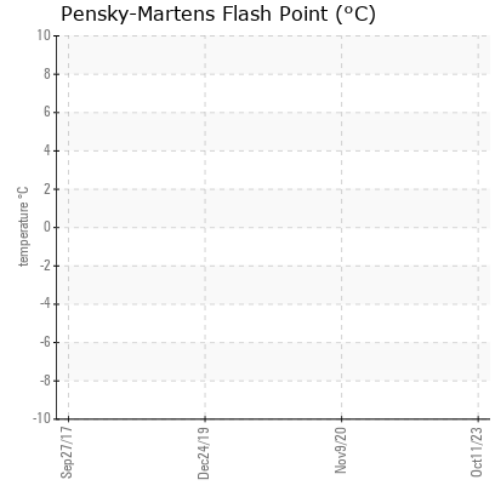




FUEL REPORT



GRAPHS



Certificate L2367

Laboratory : WearCheck USA - 501 Madison Ave., Cary, NC 27513
Sample No. : DC0031445 **Received** : 16 Oct 2023
Lab Number : **05980084** **Diagnosed** : 25 Oct 2023
Unique Number : 10697379 **Diagnostician** : Doug Bogart
Test Package : DF-5 (Additional Tests: API, Cetane, Fuel, Screen)

KELLY GENERATOR & EQUIPMENT INC
 1955 DALE LN
 OWINGS, MD
 US 20736
 Contact: LESLIE SNURR
 LSNURR@KGE.COM
 T: (410)257-5225
 F: (410)257-5227

To discuss this sample report, contact Customer Service at 1-800-237-1369.

* - Denotes test methods that are outside of the ISO 17025 scope of accreditation.

Statements of conformity to specifications are based on the simple acceptance decision rule (JCGM 106:2012)