

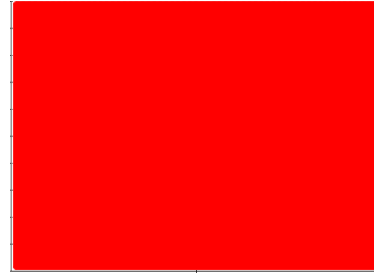


COOLANT REPORT

Sample Rating Trend

WEAR

Area
AURORA [200006927]
 Machine Id
24WEA87228 - A05 - V (S/N A5E39737038A)
 Component
Coolant
 Fluid
ISENTHAL VARIDOS 45 (--- LTR)



DIAGNOSIS

Recommendation

We recommend drain/flush system, and refill with 50/50 antifreeze water mixture. We advise that you replenish the supplemental coolant additives (SCAs) and add per manufacturer's recommendations.

Corrosion

The iron level is severe. The aluminum level is severe.

Contaminants

There is no indication of any contamination in the coolant.

Coolant Condition

Glycol and nitrite levels are acceptable. The pH level of this fluid is within the acceptable limits.

SAMPLE INFORMATION

	method	limit/base	current	history1	history2
Sample Number	Client Info		NX05981583	---	---
Sample Date	Client Info		16 May 2023	---	---
Machine Age	hrs	Client Info	20778	---	---
Oil Age	hrs	Client Info	0	---	---
Oil Changed	Client Info		N/A	---	---
Sample Status			SEVERE	---	---

PHYSICAL TEST RESULTS

	method	limit/base	current	history1	history2
Specific Gravity	*ASTM D1298		1.065	---	---
pH	Scale 0-14 ASTM D1287	8.5	8.11	---	---
Nitrites	ppm AP-053:2009	260	412	---	---
Reserve Alkalinity	Scale 0-20 *ASTM D1121		---	---	---
Percentage Glycol	% ASTM D3321	45	48.2	---	---
Freezing Point	°F ASTM D3321	-24	-31	---	---
Total Dissolved Solids			175.0	---	---
Carboxylate			n/a	---	---

CORROSION INHIBITORS

	method	limit/base	current	history1	history2
Silicon	ppm ASTM D6130	25	<1	---	---
Phosphorus	ppm ASTM D6130	140	67	---	---
Boron	ppm ASTM D6130	0	0	---	---
Molybdenum	ppm ASTM D6130	1075	614	---	---

CORROSION

	method	limit/base	current	history1	history2
Iron	ppm ASTM D6130	>15	1200	---	---
Aluminum	ppm ASTM D6130	>10	217	---	---
Copper	ppm ASTM D6130	>10	0	---	---
Lead	ppm ASTM D6130	>10	<1	---	---
Tin	ppm ASTM D6130	>10	0	---	---
Zinc	ppm ASTM D6130		110	---	---

CONTAMINANTS

	method	limit/base	current	history1	history2
Chlorine	ppm ASTM D6130		32	---	---

CARRIER SALTS

	method	limit/base	current	history1	history2
Sodium	ppm ASTM D6130	1075	870	---	---
Potassium	ppm ASTM D6130	5	805	---	---

SCALE POTENTIAL

	method	limit/base	current	history1	history2
Calcium	ppm ASTM D6130		<1	---	---
Magnesium	ppm ASTM D6130		0	---	---

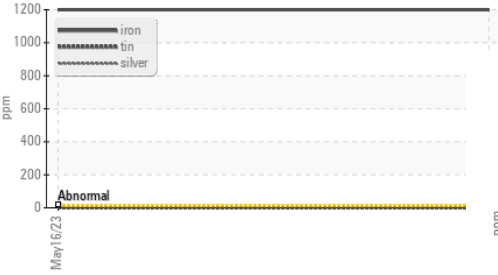


COOLANT REPORT

Copper/Aluminum/Lead

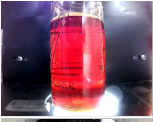



Iron/Tin/Silver



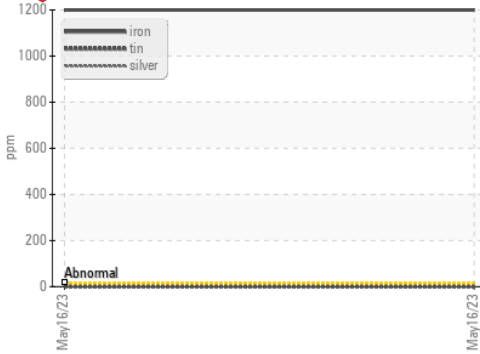
Nitrites



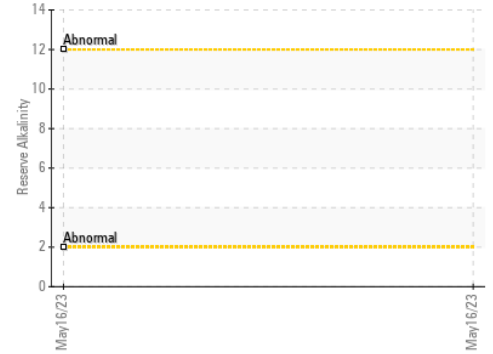
VISUAL	method	limit/base	current	history1	history2
Coolant Color	*Visual	DkYlw	Red	---	---
Coolant Appearance	*Visual	Clear	normal	---	---
Color				no image	no image
Bottom				no image	no image

GRAPHS

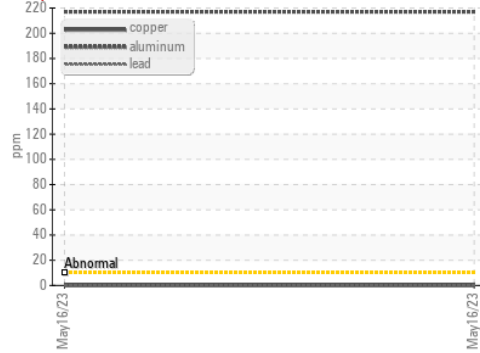
Iron/Tin/Silver



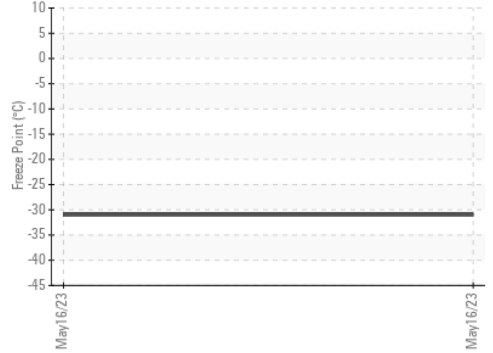
Reserve Alkalinity



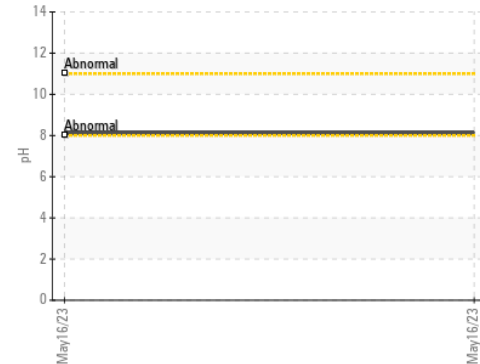
Copper/Aluminum/Lead



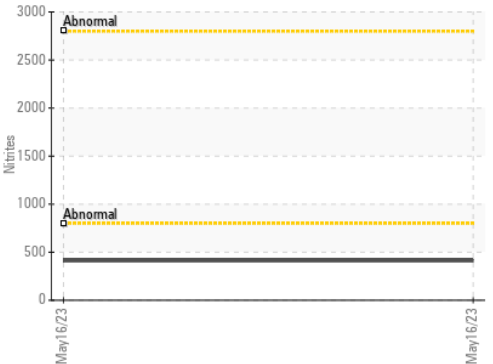
Freeze Point



pH



Nitrites



Certificate L2367

Laboratory : WearCheck USA - 501 Madison Ave., Cary, NC 27513
Sample No. : NX05981583 **Received** : 17 Oct 2023
Lab Number : 05981583 **Diagnosed** : 30 Oct 2023
Unique Number : 10698878 **Diagnostician** : Jonathan Hester
Test Package : COOL- (Additional Tests: COOL, ICP)

NORDEX USA - Chicago
 300 SOUTH WACKER DRIVE, SUITE 1500
 CHICAGO, IL
 US 60606
 Contact: DEVIN LINEHAN
 DLinehan@nordex-online.com
 T: (312)386-4124
 F: (312)386-7102

To discuss this sample report, contact Customer Service at 1-800-237-1369.

* - Denotes test methods that are outside of the ISO 17025 scope of accreditation.

Statements of conformity to specifications are based on the simple acceptance decision rule (JCGM 106:2012)