



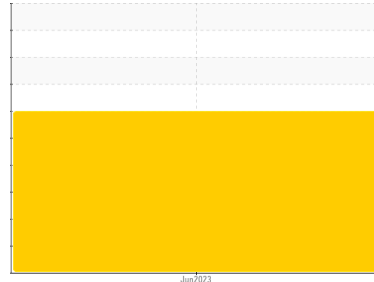
COOLANT REPORT

Sample Rating Trend

WEAR



Area
AURORA [200006927]
 Machine Id
11WEA87215 - I05 - V (S/N 11246701)
 Component
Coolant
 Fluid
ISENTHAL VARIDOS 45 (--- LTR)



DIAGNOSIS

- Recommendation**
We recommend drain/flush system, and refill with 50/50 antifreeze water mixture. We advise that you replenish the supplemental coolant additives (SCAs) and add per manufacturer's recommendations.
- Corrosion**
The aluminum level is severe.
- Contaminants**
There is no indication of any contamination in the coolant.
- Coolant Condition**
Glycol and nitrite levels are acceptable. The pH level of this fluid is within the acceptable limits.

SAMPLE INFORMATION

	method	limit/base	current	history1	history2
Sample Number	Client Info		NX05981613	---	---
Sample Date	Client Info		28 Jun 2023	---	---
Machine Age	hrs	Client Info	20416	---	---
Oil Age	hrs	Client Info	0	---	---
Oil Changed	Client Info		N/A	---	---
Sample Status			SEVERE	---	---

PHYSICAL TEST RESULTS

	method	limit/base	current	history1	history2
Specific Gravity	*ASTM D1298		1.068	---	---
pH	Scale 0-14	ASTM D1287 8.5	8.43	---	---
Nitrites	ppm	AP-053:2009 260	488	---	---
Reserve Alkalinity	Scale 0-20	*ASTM D1121	---	---	---
Percentage Glycol	%	ASTM D3321 45	50.7	---	---
Freezing Point	°F	ASTM D3321 -24	-35	---	---
Total Dissolved Solids			151.5	---	---
Carboxylate			n/a	---	---

CORROSION INHIBITORS

	method	limit/base	current	history1	history2
Silicon	ppm	ASTM D6130 25	<1	---	---
Phosphorus	ppm	ASTM D6130 140	121	---	---
Boron	ppm	ASTM D6130 0	0	---	---
Molybdenum	ppm	ASTM D6130 1075	691	---	---

CORROSION

	method	limit/base	current	history1	history2
Iron	ppm	ASTM D6130 >15	6	---	---
Aluminum	ppm	ASTM D6130 >10	25	---	---
Copper	ppm	ASTM D6130 >10	0	---	---
Lead	ppm	ASTM D6130 >10	0	---	---
Tin	ppm	ASTM D6130 >10	0	---	---
Zinc	ppm	ASTM D6130	31	---	---

CONTAMINANTS

	method	limit/base	current	history1	history2
Chlorine	ppm	ASTM D6130	28	---	---

CARRIER SALTS

	method	limit/base	current	history1	history2
Sodium	ppm	ASTM D6130 1075	590	---	---
Potassium	ppm	ASTM D6130 5	820	---	---

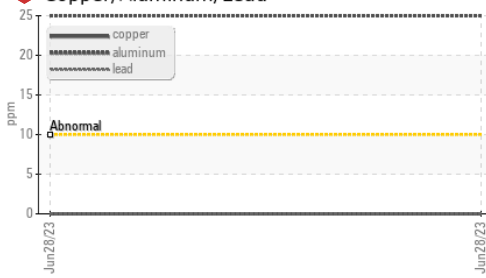
SCALE POTENTIAL

	method	limit/base	current	history1	history2
Calcium	ppm	ASTM D6130	20	---	---
Magnesium	ppm	ASTM D6130	2	---	---

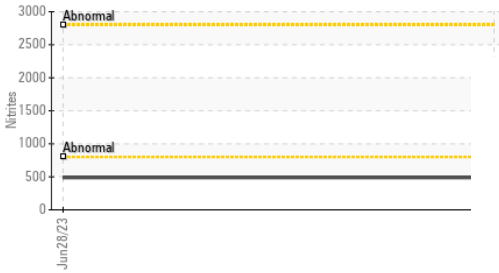


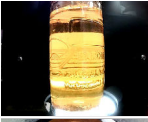

COOLANT REPORT

Copper/Aluminum/Lead



Nitrites



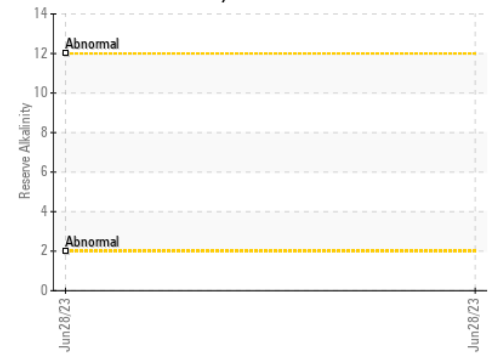
VISUAL	method	limit/base	current	history1	history2
Coolant Color	*Visual	DkYlw	Yllow	---	---
Coolant Appearance	*Visual	Clear	normal	---	---
Color				no image	no image
Bottom				no image	no image

GRAPHS

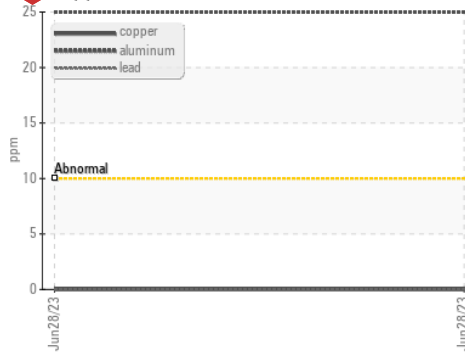
Iron/Tin/Silver



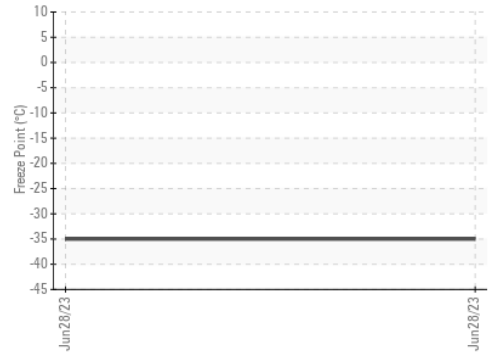
Reserve Alkalinity



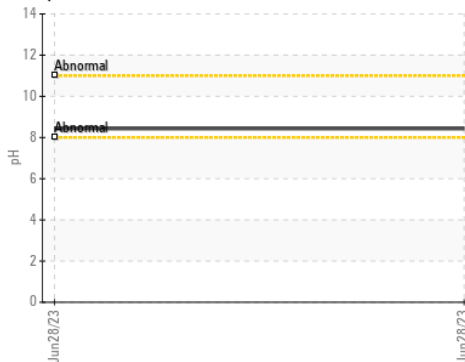
Copper/Aluminum/Lead



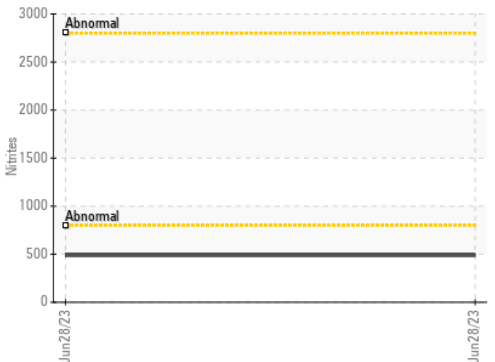
Freeze Point



pH



Nitrites



Certificate L2367

Laboratory : WearCheck USA - 501 Madison Ave., Cary, NC 27513
Sample No. : NX05981613 **Received** : 17 Oct 2023
Lab Number : 05981613 **Diagnosed** : 30 Oct 2023
Unique Number : 10698908 **Diagnostician** : Jonathan Hester
Test Package : COOL- (Additional Tests: COOL, ICP)

To discuss this sample report, contact Customer Service at 1-800-237-1369.

* - Denotes test methods that are outside of the ISO 17025 scope of accreditation.

Statements of conformity to specifications are based on the simple acceptance decision rule (JCGM 106:2012)

NORDEX USA - Chicago
 300 SOUTH WACKER DRIVE, SUITE 1500
 CHICAGO, IL
 US 60606
 Contact: DEVIN LINEHAN
 DLinehan@nordex-online.com
 T: (312)386-4124
 F: (312)386-7102