



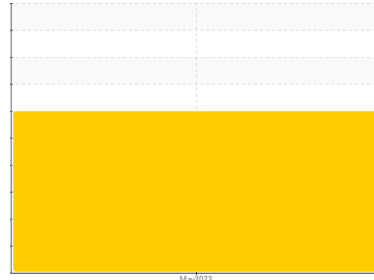
COOLANT REPORT

Sample Rating Trend

WEAR



Area
AURORA [200006927]
 Machine Id
13WEA87217 - A03 - A (S/N A5E39737038A)
 Component
Coolant
 Fluid
CLARIANT ANTIFROGEN N (--- LTR)



DIAGNOSIS

Recommendation

We recommend drain/flush system, and refill with 50/50 antifreeze water mixture. We advise that you replenish the supplemental coolant additives (SCAs) and add per manufacturer's recommendations.

Corrosion

The iron level is severe.

Contaminants

There is no indication of any contamination in the coolant.

Coolant Condition

Glycol and nitrite levels are acceptable. The pH level of this fluid is within the acceptable limits.

SAMPLE INFORMATION

	method	limit/base	current	history1	history2
Sample Number	Client Info		NX05981621	---	---
Sample Date	Client Info		15 May 2023	---	---
Machine Age	hrs	Client Info	0	---	---
Oil Age	hrs	Client Info	0	---	---
Oil Changed	Client Info		N/A	---	---
Sample Status			SEVERE	---	---

PHYSICAL TEST RESULTS

	method	limit/base	current	history1	history2
Specific Gravity	*ASTM D1298	1.11	1.067	---	---
pH	Scale 0-14	ASTM D1287	8.5	8.14	---
Nitrites	ppm	AP-053:2009		488	---
Reserve Alkalinity	Scale 0-20	*ASTM D1121	4.0	---	---
Percentage Glycol	%	ASTM D3321	44	49.4	---
Freezing Point	°F	ASTM D3321	-32	-33	---
Total Dissolved Solids				280.5	---
Carboxylate				n/a	---

CORROSION INHIBITORS

	method	limit/base	current	history1	history2
Silicon	ppm	ASTM D6130	3	<1	---
Phosphorus	ppm	ASTM D6130	5	17	---
Boron	ppm	ASTM D6130	15	0	---
Molybdenum	ppm	ASTM D6130	110	149	---

CORROSION

	method	limit/base	current	history1	history2
Iron	ppm	ASTM D6130	>15	74	---
Aluminum	ppm	ASTM D6130	>10	6	---
Copper	ppm	ASTM D6130	>10	0	---
Lead	ppm	ASTM D6130	>10	0	---
Tin	ppm	ASTM D6130	>10	0	---
Zinc	ppm	ASTM D6130		<1	---

CONTAMINANTS

	method	limit/base	current	history1	history2
Chlorine	ppm	ASTM D6130		3	---

CARRIER SALTS

	method	limit/base	current	history1	history2
Sodium	ppm	ASTM D6130	2400	3230	---
Potassium	ppm	ASTM D6130	5	0	---

SCALE POTENTIAL

	method	limit/base	current	history1	history2
Calcium	ppm	ASTM D6130		10	---
Magnesium	ppm	ASTM D6130		<1	---



COOLANT REPORT

Iron/Tin/Silver

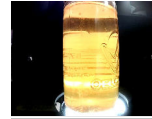


VISUAL	method	limit/base	current	history1	history2
--------	--------	------------	---------	----------	----------

Coolant Color	*Visual	Yellow	Yllow	---	---
---------------	---------	--------	--------------	-----	-----

Coolant Appearance	*Visual	Clear	normal	---	---
--------------------	---------	-------	---------------	-----	-----

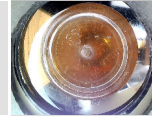
Color



no image

no image

Bottom

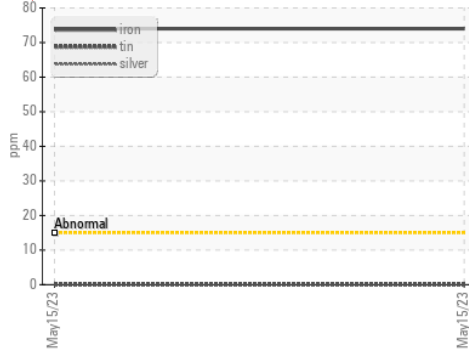


no image

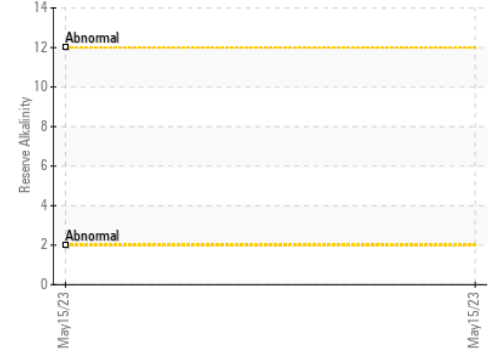
no image

GRAPHS

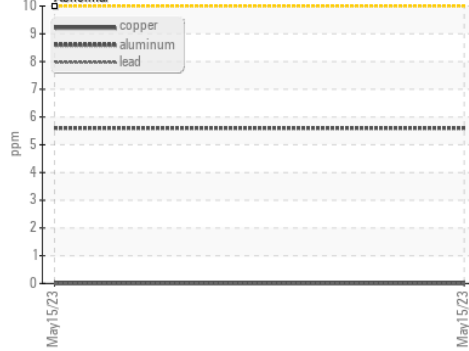
Iron/Tin/Silver



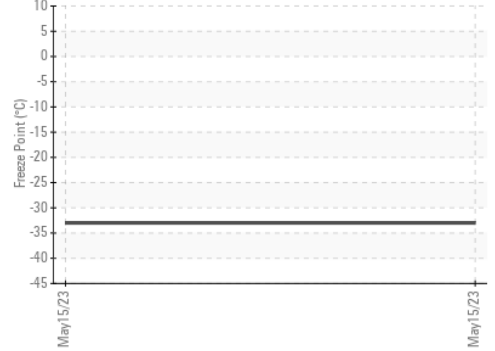
Reserve Alkalinity



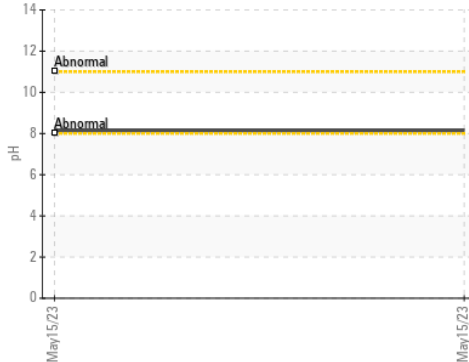
Copper/Aluminum/Lead



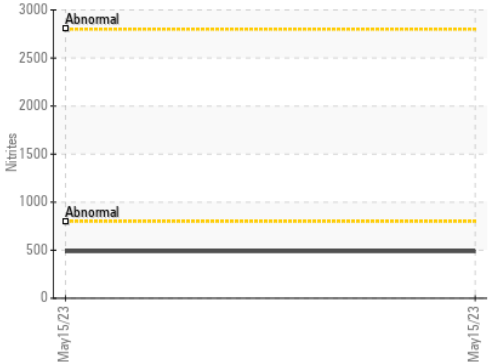
Freeze Point



pH



Nitrites



Certificate L2367

Laboratory : WearCheck USA - 501 Madison Ave., Cary, NC 27513
Sample No. : NX05981621 **Received** : 17 Oct 2023
Lab Number : 05981621 **Diagnosed** : 30 Oct 2023
Unique Number : 10698916 **Diagnostician** : Jonathan Hester
Test Package : COOL- (Additional Tests: COOL, ICP)

NORDEX USA - Chicago
 300 SOUTH WACKER DRIVE, SUITE 1500
 CHICAGO, IL
 US 60606
 Contact: DEVIN LINEHAN
 DLinehan@nordex-online.com
 T: (312)386-4124
 F: (312)386-7102

To discuss this sample report, contact Customer Service at 1-800-237-1369.

* - Denotes test methods that are outside of the ISO 17025 scope of accreditation.

Statements of conformity to specifications are based on the simple acceptance decision rule (JCGM 106:2012)