



# COOLANT REPORT

Sample Rating Trend

**NORMAL**



Area  
**AURORA [200006927]**  
 Machine Id  
**18WEA87222 - E01 - A (S/N A5E39737038A)**  
 Component  
**Coolant**  
 Fluid  
**CLARIANT ANTIFROGEN N (--- LTR)**



## DIAGNOSIS

### Recommendation

The fluid is suitable for further service.

### Corrosion

All metal levels are normal indicating no corrosion in the cooling system.

### Contaminants

There is no indication of any contamination in the coolant.

### Coolant Condition

Glycol and nitrite levels are acceptable. The pH level of this fluid is within the acceptable limits.

## SAMPLE INFORMATION

	method	limit/base	current	history1	history2
Sample Number	Client Info		<b>NX05981651</b>	---	---
Sample Date	Client Info		<b>30 Jun 2023</b>	---	---
Machine Age	hrs	Client Info	<b>0</b>	---	---
Oil Age	hrs	Client Info	<b>0</b>	---	---
Oil Changed	Client Info		<b>N/A</b>	---	---
Sample Status			<b>NORMAL</b>	---	---

## PHYSICAL TEST RESULTS

	method	limit/base	current	history1	history2
Specific Gravity	*ASTM D1298	1.11	<b>1.068</b>	---	---
pH	Scale 0-14	ASTM D1287 8.5	<b>8.14</b>	---	---
Nitrites	ppm	AP-053:2009	<b>336</b>	---	---
Reserve Alkalinity	Scale 0-20	*ASTM D1121 4.0	<b>---</b>	---	---
Percentage Glycol	%	ASTM D3321 44	<b>50.1</b>	---	---
Freezing Point	°F	ASTM D3321 -32	<b>-35</b>	---	---
Total Dissolved Solids			<b>288.5</b>	---	---
Carboxylate			<b>n/a</b>	---	---

## CORROSION INHIBITORS

	method	limit/base	current	history1	history2
Silicon	ppm	ASTM D6130 3	<b>&lt;1</b>	---	---
Phosphorus	ppm	ASTM D6130 5	<b>18</b>	---	---
Boron	ppm	ASTM D6130 15	<b>0</b>	---	---
Molybdenum	ppm	ASTM D6130 110	<b>146</b>	---	---

## CORROSION

	method	limit/base	current	history1	history2
Iron	ppm	ASTM D6130 >15	<b>&lt;1</b>	---	---
Aluminum	ppm	ASTM D6130 >10	<b>0</b>	---	---
Copper	ppm	ASTM D6130 >10	<b>0</b>	---	---
Lead	ppm	ASTM D6130 >10	<b>0</b>	---	---
Tin	ppm	ASTM D6130 >10	<b>0</b>	---	---
Zinc	ppm	ASTM D6130	<b>&lt;1</b>	---	---

## CONTAMINANTS

	method	limit/base	current	history1	history2
Chlorine	ppm	ASTM D6130	<b>2</b>	---	---

## CARRIER SALTS

	method	limit/base	current	history1	history2
Sodium	ppm	ASTM D6130 2400	<b>3140</b>	---	---
Potassium	ppm	ASTM D6130 5	<b>0</b>	---	---



## SCALE POTENTIAL

	method	limit/base	current	history1	history2
Calcium	ppm	ASTM D6130	<b>9</b>	---	---
Magnesium	ppm	ASTM D6130	<b>&lt;1</b>	---	---

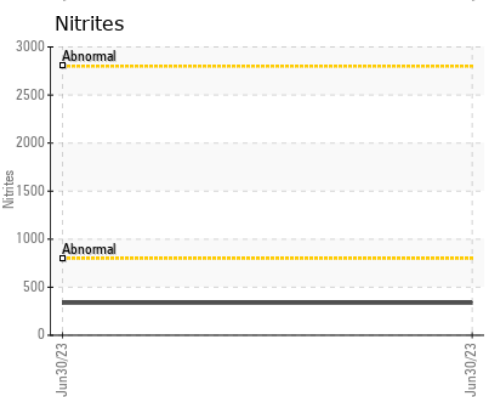
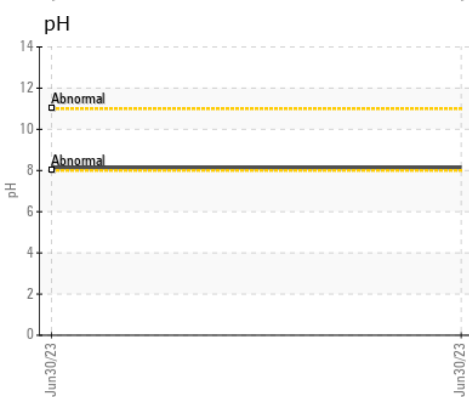
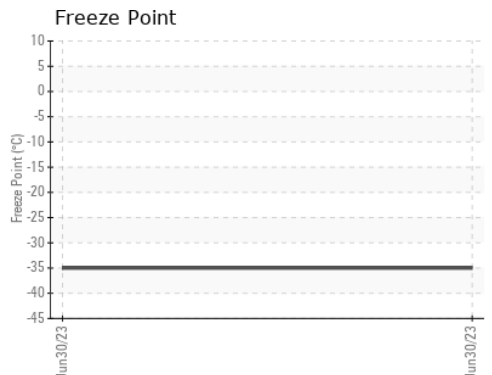
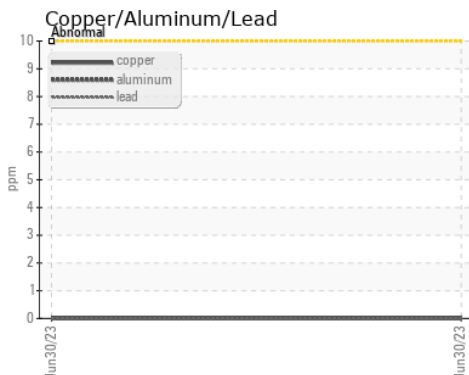
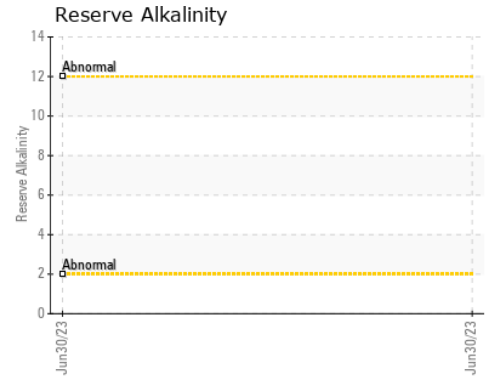
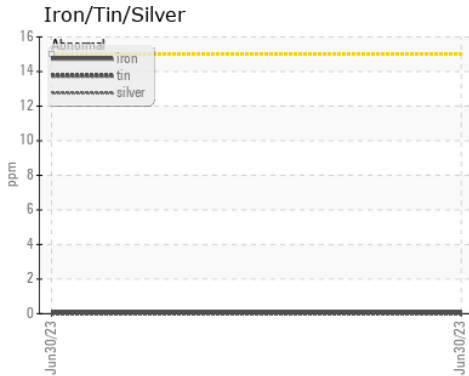


# COOLANT REPORT



VISUAL	method	limit/base	current	history1	history2
Coolant Color	*Visual	Yellow	<b>Yllow</b>	---	---
Coolant Appearance	*Visual	Clear	<b>normal</b>	---	---
Color				no image	no image
Bottom				no image	no image

## GRAPHS



Certificate L2367

**Laboratory** : WearCheck USA - 501 Madison Ave., Cary, NC 27513  
**Sample No.** : NX05981651    **Received** : 17 Oct 2023  
**Lab Number** : **05981651**    **Diagnosed** : 30 Oct 2023  
**Unique Number** : 10698946    **Diagnostician** : Jonathan Hester  
**Test Package** : COOL- ( Additional Tests: COOL, ICP )

**NORDEX USA - Chicago**  
 300 SOUTH WACKER DRIVE, SUITE 1500  
 CHICAGO, IL  
 US 60606  
 Contact: DEVIN LINEHAN  
 DLinehan@nordex-online.com  
 T: (312)386-4124  
 F: (312)386-7102

To discuss this sample report, contact Customer Service at 1-800-237-1369.

\* - Denotes test methods that are outside of the ISO 17025 scope of accreditation.

Statements of conformity to specifications are based on the simple acceptance decision rule (JCGM 106:2012)