



COOLANT REPORT

Sample Rating Trend

NORMAL



Area

AURORA [200006927]

Machine Id

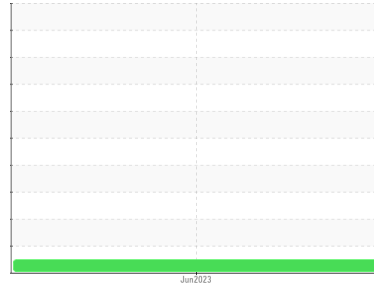
16WEA87220 - I02 - A (S/N 11246701)

Component

Coolant

Fluid

CLARIANT ANTIFROGEN N (--- LTR)



DIAGNOSIS

Recommendation

The fluid is suitable for further service.

Corrosion

All metal levels are normal indicating no corrosion in the cooling system.

Contaminants

There is no indication of any contamination in the coolant.

Coolant Condition

Glycol and nitrite levels are acceptable. The pH level of this fluid is within the acceptable limits.

SAMPLE INFORMATION

	method	limit/base	current	history1	history2
Sample Number	Client Info		NX05981653	---	---
Sample Date	Client Info		26 Jun 2023	---	---
Machine Age	hrs	Client Info	0	---	---
Oil Age	hrs	Client Info	0	---	---
Oil Changed	Client Info		N/A	---	---
Sample Status			NORMAL	---	---

PHYSICAL TEST RESULTS

	method	limit/base	current	history1	history2
Specific Gravity	*ASTM D1298	1.11	1.062	---	---
pH	Scale 0-14 ASTM D1287	8.5	8.23	---	---
Nitrites	ppm AP-053:2009		372	---	---
Reserve Alkalinity	Scale 0-20 *ASTM D1121	4.0	---	---	---
Percentage Glycol	% ASTM D3321	44	45.6	---	---
Freezing Point	°F ASTM D3321	-32	-24	---	---
Total Dissolved Solids			279.0	---	---
Carboxylate			n/a	---	---

CORROSION INHIBITORS

	method	limit/base	current	history1	history2
Silicon	ppm ASTM D6130	3	<1	---	---
Phosphorus	ppm ASTM D6130	5	17	---	---
Boron	ppm ASTM D6130	15	0	---	---
Molybdenum	ppm ASTM D6130	110	127	---	---

CORROSION

	method	limit/base	current	history1	history2
Iron	ppm ASTM D6130	>15	<1	---	---
Aluminum	ppm ASTM D6130	>10	0	---	---
Copper	ppm ASTM D6130	>10	0	---	---
Lead	ppm ASTM D6130	>10	0	---	---
Tin	ppm ASTM D6130	>10	0	---	---
Zinc	ppm ASTM D6130		0	---	---

CONTAMINANTS

	method	limit/base	current	history1	history2
Chlorine	ppm ASTM D6130		0	---	---

CARRIER SALTS

	method	limit/base	current	history1	history2
Sodium	ppm ASTM D6130	2400	3005	---	---
Potassium	ppm ASTM D6130	5	0	---	---

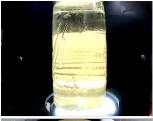

SCALE POTENTIAL

	method	limit/base	current	history1	history2
Calcium	ppm ASTM D6130		<1	---	---
Magnesium	ppm ASTM D6130		0	---	---

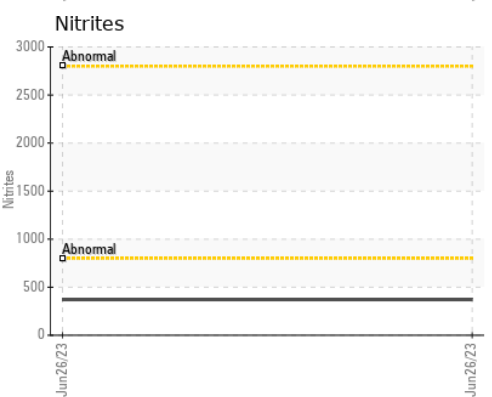
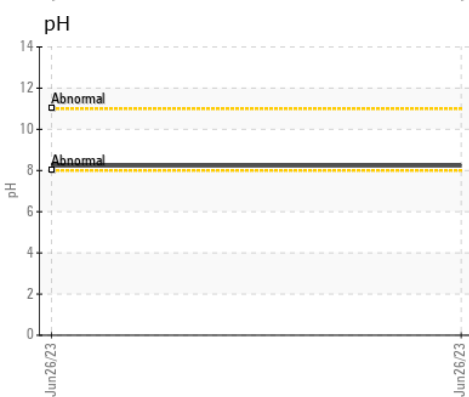
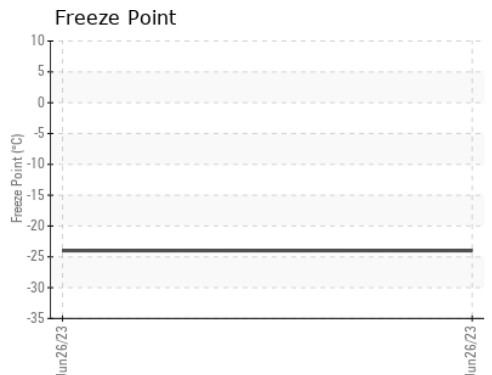
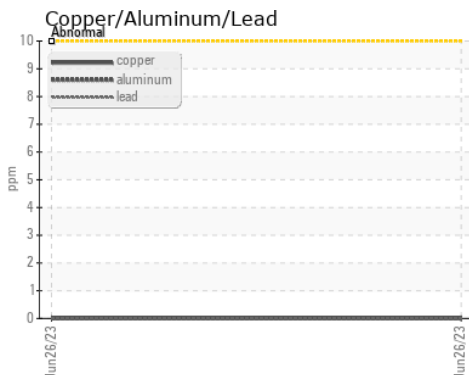
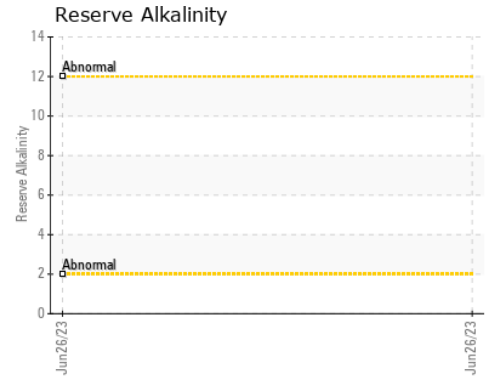
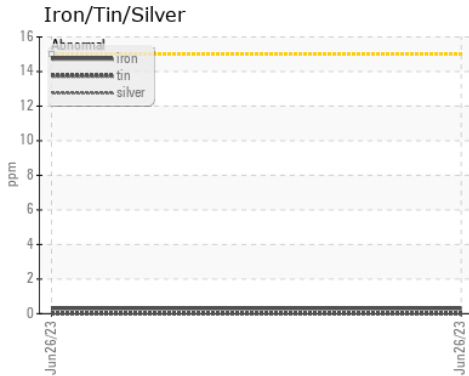


COOLANT REPORT



VISUAL	method	limit/base	current	history1	history2
Coolant Color	*Visual	Yellow	Yllow	---	---
Coolant Appearance	*Visual	Clear	normal	---	---
Color				no image	no image
Bottom				no image	no image

GRAPHS



Laboratory : WearCheck USA - 501 Madison Ave., Cary, NC 27513
Sample No. : NX05981653 **Received** : 17 Oct 2023
Lab Number : **05981653** **Diagnosed** : 30 Oct 2023
Unique Number : 10698948 **Diagnostician** : Jonathan Hester
Test Package : COOL- (Additional Tests: COOL, ICP)

NORDEX USA - Chicago
 300 SOUTH WACKER DRIVE, SUITE 1500
 CHICAGO, IL
 US 60606
 Contact: DEVIN LINEHAN
 DLinehan@nordex-online.com
 T: (312)386-4124
 F: (312)386-7102

Certificate L2367
 To discuss this sample report, contact Customer Service at 1-800-237-1369.
 * - Denotes test methods that are outside of the ISO 17025 scope of accreditation.
 Statements of conformity to specifications are based on the simple acceptance decision rule (JCGM 106:2012)