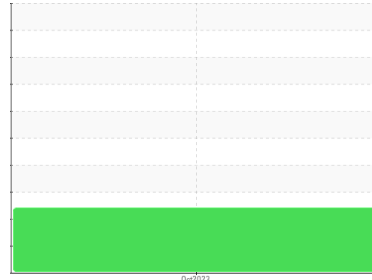




FUEL REPORT

Sample Rating Trend



ISO



Machine Id
KIOTI DK5510 YP8703123

Component
Diesel Fuel
Fluid
NOT GIVEN (--- GAL)

DIAGNOSIS

Recommendation

We advise that you filter this fluid before use. All laboratory tests indicate that this sample meets specifications for No.2 ultra-low-sulfur diesel fuel.

Corrosion

All metal levels are normal indicating no corrosion in the system.

Contaminants

There is a high amount of particulates present in the fuel. The water content is negligible. There is no bacteria or fungus (yeast and/or mold) indicated in the sample.

Fuel Condition

Sulfur value derived by ASTM D5453 method for ULSD validation. Sulfur level is acceptable for ULSD specification.

SAMPLE INFORMATION		method	limit/base	current	history1	history2
Sample Number	Client Info			KT0000608	---	---
Sample Date	Client Info			10 Oct 2023	---	---
Machine Age	hrs	Client Info		320	---	---
Sample Status				ATTENTION	---	---

PHYSICAL PROPERTIES		method	limit/base	current	history1	history2
Specific Gravity		*ASTM D1298		0.843	---	---
Fuel Color	text	*Visual Screen		Red	---	---
ASTM Color	scalar	*ASTM D1500		L4.0	---	---
Visc @ 40°C	cSt	ASTM D445		2.59	---	---
Pensky-Martens Flash Point	°C	*PMCC Calculated		54	---	---

SULFUR CONTENT		method	limit/base	current	history1	history2
Sulfur	ppm	ASTM D5185m		0	---	---
Sulfur (UVF)	ppm	ASTM D5453		9	---	---

DISTILLATION		method	limit/base	current	history1	history2
Initial Boiling Point	°C	ASTM D86		146	---	---
5% Distillation Point	°C	ASTM D86		192	---	---
10% Distill Point	°C	ASTM D86		207	---	---
15% Distillation Point	°C	ASTM D86		217	---	---
20% Distill Point	°C	ASTM D86		225	---	---
30% Distill Point	°C	ASTM D86		240	---	---
40% Distill Point	°C	ASTM D86		254	---	---
50% Distill Point	°C	ASTM D86		267	---	---
60% Distill Point	°C	ASTM D86		279	---	---
70% Distill Point	°C	ASTM D86		292	---	---
80% Distill Point	°C	ASTM D86		306	---	---
85% Distillation Point	°C	ASTM D86		314	---	---
90% Distill Point	°C	ASTM D86		324	---	---
95% Distillation Point	°C	ASTM D86		339	---	---
Final Boiling Point	°C	ASTM D86		347	---	---
Distillation Residue	%	ASTM D86		1.4	---	---
Distillation Loss	%	ASTM D86		0.9	---	---

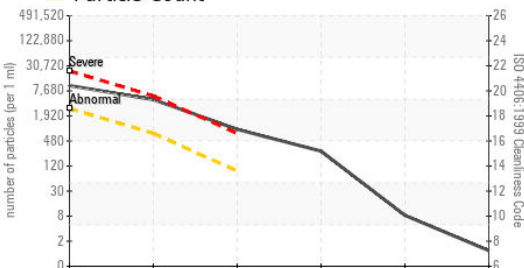
IGNITION QUALITY		method	limit/base	current	history1	history2
API Gravity		ASTM D7777		36.4	---	---
Cetane Index		ASTM D4737	<40.0	48.8	---	---

CONTAMINANTS		method	limit/base	current	history1	history2
Silicon	ppm	ASTM D5185m	<1.0	<1	---	---
Sodium	ppm	ASTM D5185m	<0.1	0	---	---
Potassium	ppm	ASTM D5185m	<0.1	<1	---	---
Water	%	ASTM D6304	<0.05	0.009	---	---
ppm Water	ppm	ASTM D6304	<500	99.7	---	---
% Gasoline	%	*In-House	<0.50	0.0	---	---
% Biodiesel	%	*In-House	<20.0	1.2	---	---

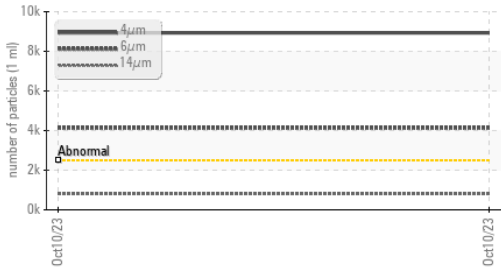


FUEL REPORT

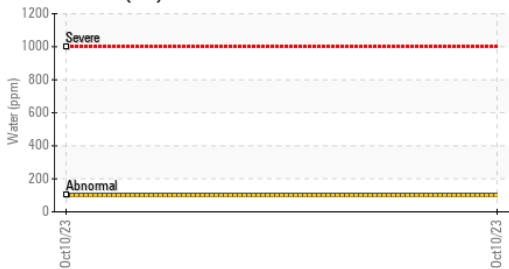
Particle Count



Particle Trend



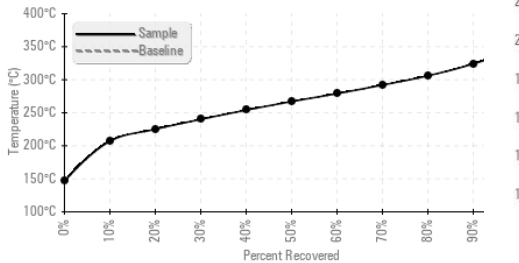
Water (KF)



Viscosity @ 40°C



Fuel Distillation Curve



FLUID CLEANLINESS	method	limit/base	current	history1	history2
Particles >4µm	ASTM D7647	>2500	▲ 8928	---	---
Particles >6µm	ASTM D7647	>640	▲ 4134	---	---
Particles >14µm	ASTM D7647	>80	▲ 799	---	---
Particles >21µm	ASTM D7647	>20	▲ 241	---	---
Particles >38µm	ASTM D7647	>4	▲ 7	---	---
Particles >71µm	ASTM D7647	>3	1	---	---
Oil Cleanliness	ISO 4406 (c)	>18/16/13	▲ 20/19/17	---	---

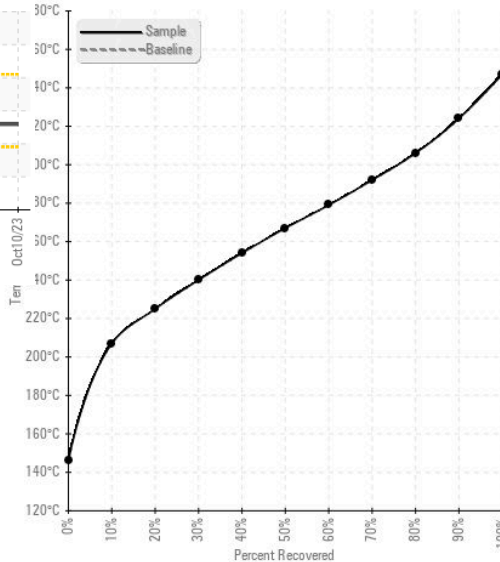
HEAVY METALS	method	limit/base	current	history1	history2
Aluminum	ppm	ASTM D5185m <0.1	2	---	---
Nickel	ppm	ASTM D5185m <0.1	0	---	---
Lead	ppm	ASTM D5185m <0.1	0	---	---
Vanadium	ppm	ASTM D5185m <0.1	0	---	---
Iron	ppm	ASTM D5185m <0.1	0	---	---
Calcium	ppm	ASTM D5185m <0.1	<1	---	---
Magnesium	ppm	ASTM D5185m <0.1	<1	---	---
Phosphorus	ppm	ASTM D5185m <0.1	0	---	---
Zinc	ppm	ASTM D5185m <0.1	0	---	---

SAMPLE IMAGES

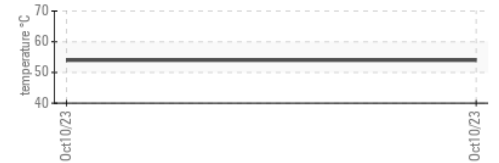
	method	limit/base	current	history1	history2
Color				no image	no image
Bottom				no image	no image

GRAPHS

Fuel Distillation Curve



Pensky-Martens Flash Point (°C)



Certificate L2367

Laboratory : WearCheck USA - 501 Madison Ave., Cary, NC 27513
Sample No. : KT0000608 **Received** : 17 Oct 2023
Lab Number : 05982156 **Diagnosed** : 01 Nov 2023
Unique Number : 10699451 **Diagnostician** : Doug Bogart
Test Package : DF-2 (Additional Tests: Screen)

To discuss this sample report, contact Customer Service at 1-800-237-1369.

* - Denotes test methods that are outside of the ISO 17025 scope of accreditation.

Statements of conformity to specifications are based on the simple acceptance decision rule (JCGM 106:2012)

TRI COUNTY SUPPLY

12069 RT 16

CHAFFEE, NY

US 14030

Contact: SERVICE MANAGER

T: (716)496-8859

F: